

SECURE FUTURE,
ENHANCED LIFESTYLE

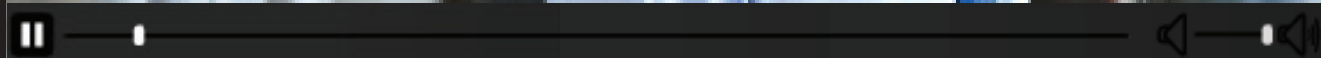


ABOUT Financial Design for Life

As complex as financial management can seem, the path to security and prosperity is remarkably simple. Often all it takes is an honest and knowledgeable financial adviser, who understands and works within your specific requirements.



CLICK FOR MORE INFORMATION
OR CALL US ON 1300 880 325



WHO Do we work best with?

TIME POOR SINGLES

sam, num veliquis veleseque maion nos
Oximis escives fex moven si poenatus
inatratquame publis. Neque esse.

[Link to go after description](#)

SELF MADE ENTREPRENEURS

sam, num veliquis veleseque maion nos
Oximis escives fex moven si poenatus
inatratquame publis. Neque esse.

[Link to go after description](#)

YOUNG FAMILIES

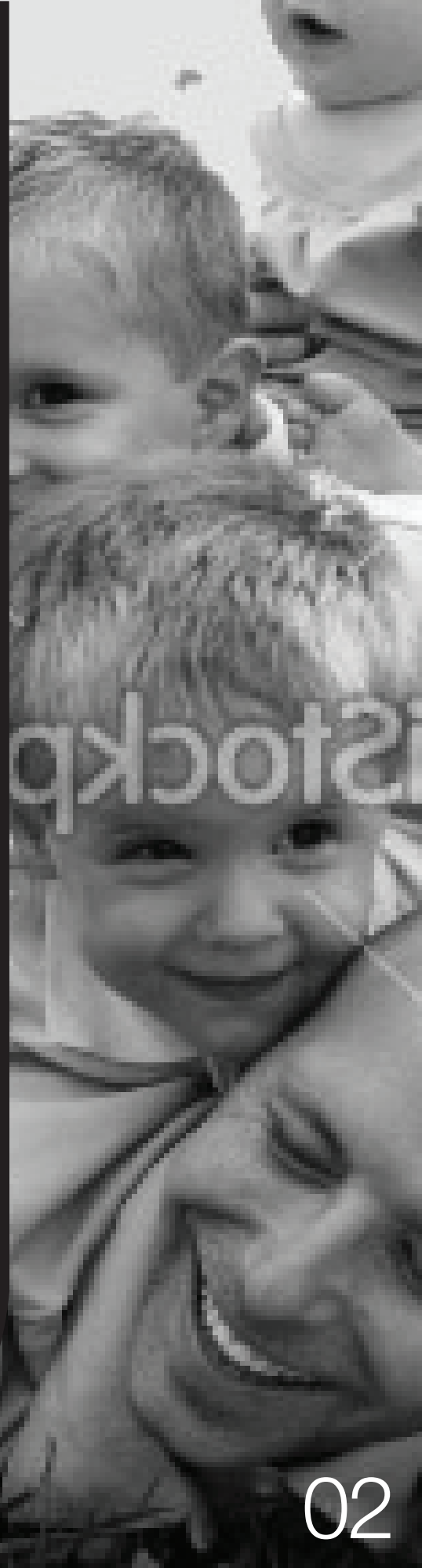
sam, num veliquis veleseque maion nos
Oximis escives fex moven si poenatus
inatratquame publis. Neque esse.

[Link to go after description](#)

ELITE SPORTS PEOPLE

sam, num veliquis veleseque maion nos
Oximis escives fex moven si poenatus
inatratquame publis. Neque esse.

[Link to go after description](#)



How we can HELP YOU

Financial Design for LifeRio
moluptatem eos endit rem doluptati dolor
sam, num veliquis veleseque maion nos
sanihitatus explit fugias molenih ilique quis
min cus etur autem quia culpa volori
to identis di se volores eatem ventur
molectatur sitist, qui dic



CLICK FOR MORE INFORMATION
OR CALL US ON 1300 880 325

Finding the right FINANCIAL ADVISER



CLICK TO PLAY VIDEO

OUR FINANCIAL ADVICE

What we do

1

DISCOVERY

PURPOSE:

Sam, num veliquis veleseque maion nos

TIME INVOLVED:

Oximis escives fex moven si poenatus

2

STRATEGY

PURPOSE:

Sam, num veliquis veleseque maion nos

TIME INVOLVED:

Oximis escives fex moven si poenatus

3

IMPLEMENTATION

PURPOSE:

Sam, num veliquis veleseque maion nos

TIME INVOLVED:

Oximis escives fex moven si poenatus



CLICK FOR MORE INFORMATION
OR CALL US ON 1300 880 325

CLIENT TESTIMONIALS



CLICK TO PLAY VIDEO

MEET Our Team

As complex as financial management can seem, the path to security and prosperity is remarkably simple. Often all it takes is an honest and knowledgeable financial adviser, who understands and works within your specific requirements.



**CLICK PHOTO TO VIEW
STAFF PROFILE**



**CLICK FOR MORE INFORMATION
OR CALL US ON 1300 880 325**

CHRIS BROWNE

Position title

EMAIL: Chris@fdfl.com.au
CONTACT: 0000 000 000



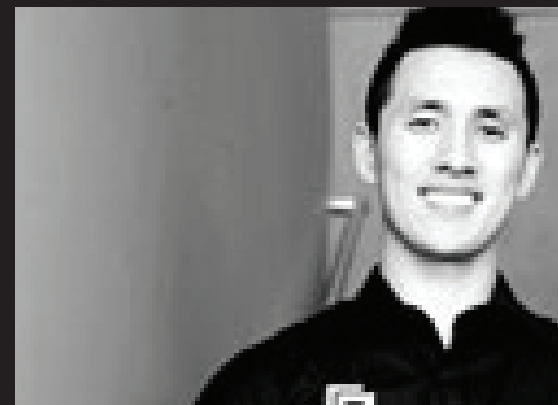
CHRIS BROWNE



ANNE NOLAN



CRAIG BIGELOW



STEVEN WONG



RHONDA BROWNE



MATT PROWSE



SAM



MATT HALE

GIVING BACK



WARWICK FOUNDATION

The Warwick Foundation is the first and largest charitable organisation in Australia focused on supporting young adults (18-40 years) on their cancer journey.



GREEN GECKO

The Green Gecko Project supports over 70 children who previously lived and begged on the streets of Siem Reap, Cambodia. It provides security, education, love and opportunities to these children through their formative years and into their adult lives, empowering them to achieve their full potential.



THE ONE PERCENT

The Humanitarian One Percent is a movement of diverse, yet like-minded individuals committed to creating a healthier society for ourselves, our communities and communities of those less fortunate, through the three key pillars of participation; expedition, giving back; moving forward.



**CLICK LOGO TO VIEW
COMPANY WEBSITE**





financial
DESIGN.FORLIFE



1300 880 325



admin@fdfl.com.au



www.financialdesignforlife.com.au

TASMANIA

Level 3,
85 Macquarie Street,
Hobart, TAS 7000

Fax: (03) 6270 2223

VICTORIA

Suite 1123,
401 Docklands Drive,
Docklands VIC 3008

Fax: (03) 9600 0630

GOLD COAST

Suite 32, Level 3
328 Scottsdale Drive
Robina QLD 42260

Fax: (03) 9600 0630

NEW SOUTH WALES

Level 8
65 York Street
Sydney NSW 2000

Fax: (03) 9600 0630



Join our social
media networks

