

W H Good

LOW CARBON CONSULTANTS

LOW CARBON
ENERGY
ASSESSORS



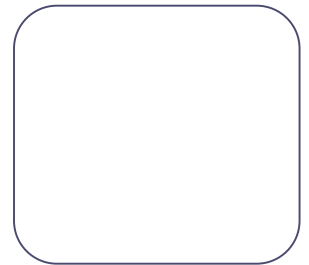


Expertly managed, integrated projects delivered by a communicative and cohesive team.



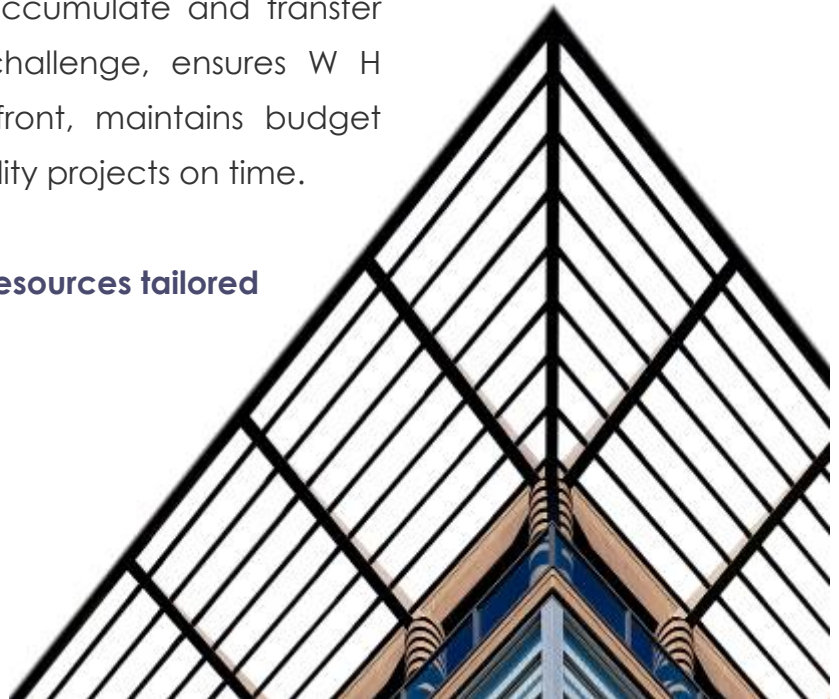
Our aim is to work with you in partnership to deliver this.

W H Good's technical experience and team orientated approach, coupled with a refreshing attitude to change and innovation adds real value in construction operations.



Our understanding of the wider implications of a project, and the ability to accumulate and transfer knowledge to each new challenge, ensures W H Good anticipates issues upfront, maintains budget and delivers defect-free, quality projects on time.

W H Good : Comprehensive resources tailored to your requirements.





■ Who we are

W H Good was established in 1922 and is led by a team of directors committed to building upon, and enhancing partnerships sustained throughout 85 years in the industry.



Managing Director

Qualified after beginning as an apprentice with the business in 1981, through to directorship in 2001 to oversee contracts and FM.



Director

Started with the company in 1982, and appointed a director in 2001 to oversee contracts, and responsibility for estimating & design activities.



Director

Joined the HVAC industry in 1983, and appointed a director in 2008 to oversee contracts, and responsible for local authority / health activities.



Chairman, Director & Secretary

Joined the business in 1985 carrying out commercial management, appointed a director in 2001 for financial & commercial operations.



Director

Joined the business in 1956 as an electrical apprentice and worked in all areas of the company, became MD & majority shareholder in 1970.



General Manager

Started with the company in 1989, became general manager 2003, responsibilities include supply chain management & customer services.



What we do



We **design**. We **install**. We **maintain**. From feasibility to commissioning, we undertake all aspects of a project **In-House**, co-ordinated, engineered and efficiently delivered.

Services

- | | |
|---------------------|-----------------------------|
| :: Electrical | :: Renewable Technologies |
| :: Heating | :: Energy Metering |
| :: Ventilation | :: High Voltage |
| :: Air Conditioning | :: Specialist Floodlighting |
| :: BMS Controls | :: Fire & Security |
| :: Communications | :: Plumbing |



Turnover

2008 : £18m

Strategic planned growth of 20% annually is forecasted over the next 3-5 years, working with current relationships and future prospects.

Operating Centres & Coverage

Full UK coverage is undertaken from our Lancashire Head Office, with strategic offices in Manchester, Liverpool & Preston to manage local relationships direct in those areas.

leisure retail
commercial
healthcare residential
distribution
accommodation
education



Design/ breeam

Our **full M&E design** resource delivers creative & informed proposals, integrating services & infrastructures efficiently, and introducing product innovations to optimise the **value, practicality, functionality and reliability** of each scheme.

Our design staff are additionally fully qualified & certified **Low | Carbon Consultants** able to provide expert advice on carbon minimisation and **SBEM/SAP/Part L Calculations**, with our **Low | Carbon Energy Assessors** providing Energy Performance Certificates (EPC's) & operational support.

Contract Delivery

Effective procurement, management and delivery are assured on each project. Our **Quality & Contract Management procedures** embrace evolving construction techniques, working practices and **Dedicated Supply Chain Partnerships** to achieve best practice, every time.

Our service is built on relationships with the entire team involved, from suppliers to customers, colleagues and employees, through to stakeholders in the local community. We actively work with all parties to promote the **Safety, Health & Environmental** aspects of both project & general activities, and continually appraise the effectiveness in conjunction with specialist consultants.

PERSONNEL
CERTIFICATION
ERC3162





Teamwork



We employ a diverse range of talented individuals working together across all disciplines, who gain satisfaction, reward and recognition for their part in delivering quality projects and exceeding client expectations.

ENCOURAGE
SUPPORT
& GUIDE



The team

1	SHE & Resources Manager	5	Site Managers
4	Design Engineers	11	Site Supervisors
4	Estimating Engineers	74	Electrical Operative
6	Contracts Managers	31	Pipefitter/Welders
1	Small Works Manager	14	Air Con Operatives
1	Commissioning Manager	6	Data Technicians
		3	Instrument Techs
2	Service Engineers	16	Apprentices
6	Maintenance Engineers	8	Assistants
2	Small Works Technicians	3	Inspect & Test Eng



Training & Regulatory

Training from annual apprenticeship in-take programmes, to ongoing competence certification, are delivered to ensure we have the expertise to meet project demands.



Personal Development

We offer aspiring individuals from new apprentices to our longest serving employee with over 52 years service, opportunities & encouragement to enhance and further their careers, and fulfil their vocational ambitions.





Client Testimonials

On behalf of G&J Seddon Ltd, I would like to thank both your company and specifically your site representative Duncan Ratcliffe and his Project Team, for the professional and collaborative manner in which the South Rings development was delivered on programme and virtually defect free. With the close involvement of your construction team we were able to adhere to our clients proposals and achieve an outstanding array of quality and professionalism throughout the contract.

As you know Health and Safety is paramount on our projects, and we were delighted in your proactive approach to all the installation.

We are hopeful your company will be successful with future contracts with ourselves and look forward to an ongoing relationship.

Seddon
Seddon Group Limited

Tony Corr
Contracts Manager
G&J Seddon Ltd

I would like to express our satisfaction with the level of service we have received on this project. As you are aware, not only is this Hampton by Hilton development the first of it's brand in the UK, but the first outside of the USA. The input and experience of both the design team through to site personnel has led to a successfully delivered project.

Their practical and proactive approach, and efficient proposals included within your scheme, have resulted in a well engineered and co-ordinated installation.

I look forward to working with you in the future as we continue the development of the Hilton Hotel Family of Brands.


Hilton

Peter Abel
UK Design & Construction
Manager - Hilton Hotels

Hotel Projects



Media City UK Salford
Bovis Lend Lease
£3.9m Design & Build
M&E/Renewables



Manchester Airport
Multibuild Construction
£1.5m Design & Build
Mechanical & Plumbing



Manchester City Centre
Russells Construction
£1.8m Design & Build
M&E/ Comms & Security



Corby
Barnfield Construction
£1.5m Design & Build
M&E/ Comms & Security



Hotel Projects



Chester City Centre
Multibuild Construction
£1.1m Design & Build
M&E Refurbishment



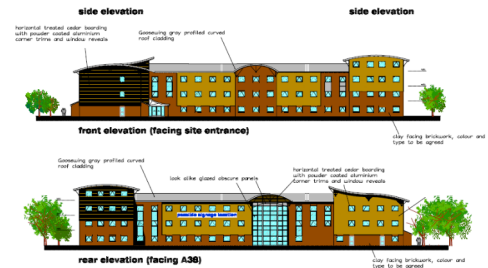
Kendal
Askam Construction
£1m Design & Build
M&E/ Comms & Security



Doncaster
Barnfield Construction
£1m Design & Build
M&E/ Comms & Security



Coventry
Barnfield Construction
£2m Design & Build
M&E/ Comms & Security



Retail Projects



Leeds
Simpsons Construction
£100k Design & Build
M&E



Colne
Barnfield Construction
£3.5m Design & Build
M&E / Renewables



Liverpool 1 Centre
GF Group
£300k Design & Build
Aircon & Fire Protection



Hattersley Centre Ormskirk
Barnfield Construction
£500k Design & Build
M&E/ Comms & Security



Commercial Projects



South Rings Business Park
Seddon Construction
£1.8m Design & Build
M&E/Renewables



NCC Swansea
Barnfield Construction
£2m Design & Build
Electrical & Communications



Colne
Barnfield Construction
£1.5m Design & Build
M&E/Renewables



Cheadle Royal Business Park
Seddon Construction
£2m Design & Build
M&E/ Renewables



Distribution Projects

TESCO

Bolton
Bowmer & Kirkland
£500k Design & Build
Electrical & Communications



WOLSELEY
UK

Chorley
Pochin Construction
£2.6m Design & Build
M&E/ Renewables



GeoPost

Gloucester & Warrington
Barnfield Construction
£250k Design & Build
Electrical & Communications



NORBAIN

Manchester
NDL
£1.3m Design & Build
M&E / Fire Protection



Airport Projects



Liverpool
Liverpool Airport
£80k Design & Build
Site wide Fibre Network



Terminal 1 MSCP
Manchester Airport Group
£2.9m Traditional
Lighting & Signage



Olympic House & Parkway
My Travel
£1.5m Design & Build
Electrical & Communications



International Airports
Rapiscan Systems
£500k Design & Build
Electrical & Automation



Industrial Projects



Meyer Prestige
Allenbuild
£500k Design & Build
Electrical & Security



Manchester
Barnfield Construction
£1m Design & Build
M&E/ Fire Protection



Blackpool Council
BUILDING A BETTER COMMUNITY FOR ALL

Blackpool Illuminations
Barnfield Construction
£500k Design & Build
Electrical & Security



Manchester
Beva Construction
£750k Design & Build
M&E/ Renewables



Leisure Projects



Longdendale Leisure
Jackson & Jackson
£250k Traditional
M&E/Renewables



Stoke
Birse Construction
£1.5m Design & Build
Electrical & Communications



Ribblesdale Park

Gisburne
Wm Pye Construction
£80k Design & Build
Electrical & Communications



Accrington
Barnfield Construction
£250k Design & Build
Electrical & Communications



Residential Projects



Manchester
Linford Construction
£250k Design & Build
M&E / Security



**Park Lane
Plaza**

Liverpool
Barnfield Construction
£1m Design & Build
M&E/ Comms & Security



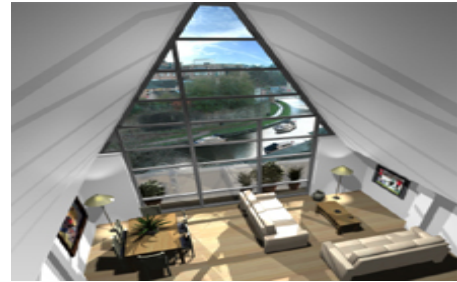
**Barrowford
Grange**

Colne
Barnfield Construction
£250k Design & Build
M&E / Comms & Security



Knight's Bridge
APARTMENTS
Quality, Lifestyle & Excellence

Lancaster
Pennington Construction
£250k Design & Build
M&E/ Comms & Security



Educational Projects



Kingfisher School
Oldham MBC
£500k Design & Build
M&E/Renewables



Bradford
Bradford University
£1.5m Design & Build
M&E/ Renewables



Novar Building
H Fairclough Construction
£150k Traditional
Electrical & Comms



Lancaster
Wm Pye Construction
£500k Traditional
Street Lighting & Fibre Cabling



Healthcare Projects

NHS
University College
London Hospitals
NHS Foundation Trust

UCLH London
Machaire
£100k Traditional
Electrical & Access



NHS
Central Manchester
University Hospitals
NHS Foundation Trust

St Mary's Manchester
ISG Regions Construction
£1.3m Traditional
M&E/ Comms & Security



NHS
Central Manchester
University Hospitals
NHS Foundation Trust

Turner Dental Suite
Cosby Construction
£100k Traditional
Mechanical & Medical Gas



NHS
THE beatson
WEST OF SCOTLAND CANCER CENTRE

Beatson, Sheffield & Newcastle
Machaire
£200k Traditional
Electrical & Access



Public Sector Projects



Fulwood Barracks Preston
Wm Pye Construction
£200k Traditional
Electrical & Security



County Fire Stations
Mersey Fire Brigade
£250k Traditional
Fibre Communications



County Police Stations
MBS
£500k Traditional
Electrical & Access



Manchester Crown Court
HMCS
£200k Traditional
Mechanical & Controls



Refurbishment Projects



Bury
Union Papertech
£300k Design & Build
M&E / Communications



Oldham
Findel Plc
£1.5m Design & Build
M&E/ Comms & Security



Accrington
Mardayne Estates
£300k Traditional
Electrical & Plumbing



Warrington
Europa FM
£100k Design & Build
M&E/ Renewables



Clients

- 3M
- Allenbuild
- Amec
- Atkins
- Aggregate Industries
- Akzo Nobel
- AstraZeneca
- Thomas Barnes Construction
- Barnfield Construction
- Bowmer & Kirkland
- City build
- Citypark Developments
- Cruden Construction
- Entertainment Distribution Company
- Eric Wright Construction
- Harry Fairclough Construction
- Findel Plc
- Fraser Eagle Group
- Garside & Laycock
- Georgia Pacific
- Graham & Brown
- Hilton Hotels Group
- JJB Sports
- Knight Frank
- Kruger Paper
- Linford Group
- Littlewoods Shop Direct Group
- Lucite
- Marbank Construction

- Marshall Construction
- MEL Chemicals
- Northern Foods Plc
- Orbit Developments
- Procter & Gamble
- Sappi Europe
- SCA Packaging
- Silentnight Holdings
- Simons Construction
- Smurfit Plc
- Sonoco Alcore
- Tolent Construction
- Warburtons Bakeries

References

David Brown
[Glovers Project Services Ltd](#)
Tel: 08703 600 111

John Hadfield
[G & J Seddon Ltd](#)
Tel: 01204 570400

David Evans
[White Young Green Ltd](#)
Tel: 0161 874 8715

