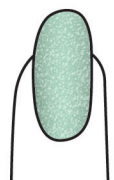


max MAKEUP
CHERIMOYA®

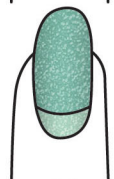
Pebble Beach

Crystal Sand Nail Lacquer

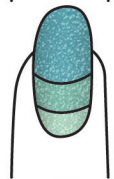
Instructions:



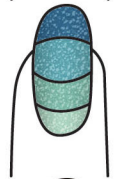
Step 1 (of any tone)



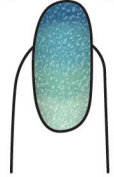
Step 2 (of corresponding tone)



Step 3 (of corresponding tone)



Step 4 (of corresponding tone)



Results

*Gradient nails can be accomplished with at least 2 different shades of Pebble Beach

*Steps may be reversed for dark to light results

Color Chart



PB01
Ruby
Step 1



PB02
Pink Diamond
Step 1



PB03
Emerald
Step 1



PB04
Aquamarine
Step 1



PB05
Amethyst
Step 1



PB06
Platinum
Step 1



PB07
Fire Opal
Step 1



PB08
Topaz
Step 1



PB09
Ruby
Step 2



PB10
Pink Diamond
Step 2



PB11
Emerald
Step 2



PB12
Aquamarine
Step 2



PB13
Amethyst
Step 2



PB14
Platinum
Step 2



PB15
Fire Opal
Step 2



PB16
Topaz
Step 2



PB17
Ruby
Step 3



PB18
Pink Diamond
Step 3



PB19
Emerald
Step 3



PB20
Aquamarine
Step 3



PB21
Amethyst
Step 3



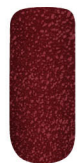
PB22
Platinum
Step 3



PB23
Fire Opal
Step 3



PB24
Topaz
Step 3



PB25
Ruby
Step 4



PB26
Pink Diamond
Step 4



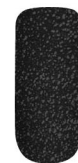
PB27
Emerald
Step 4



PB28
Aquamarine
Step 4



PB29
Amethyst
Step 4



PB30
Platinum
Step 4



PB31
Fire Opal
Step 4



PB32
Topaz
Step 4