



UNSW Colleges

UNSW Apartments

Resident Info

FAQs

Apply Now

Contact

LIMITED SPACES LEFT IN UNSW COLLEGES

Limited spaces left in Basser, Baxter, Goldstein, Fig Tree and UNSW Hall.

[FIND OUT MORE](#)**Colleges**

The independent living accommodation portfolio at UNSW is geared towards independent living for undergraduate and postgraduate students including couples and families with children.

Features include:

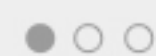
- Lorem ipsum dolor sit amet, consectetur adipiscing elit.
- Aenean commodo ligula eget dolor. Aenean massa.
- Cum sociis natoque penatibus
- Donec quam felis, ultricies nec

[FIND OUT MORE AND SEE ALL OUR APARTMENTS →](#)**Apartments**

In total 1,130 students will call UNSW Colleges home in 2014. UNSW Colleges are proud of their diverse mix of residents from all over the world as well as students from all corners of the world.

Features include:

- Lorem ipsum dolor sit amet, consectetur adipiscing elit.
- Aenean commodo ligula eget dolor. Aenean massa.
- Cum sociis natoque penatibus
- Donec quam felis, ultricies nec

[FIND OUT MORE AND SEE ALL OUR APARTMENTS →](#)**Videos****Home @ UNSW**

Campus life is about to get bigger and better with the opening of the Kensington Colleges redevelopment in January 2014. We preview the new facilities and hear from students and alumni about the benefits of college life.

Latest News[View more news →](#)**Vestibulum ante ipsum primis**

Lorem ipsum dolor sit amet, consectetur adipiscing elit. Aenean commodo ligula eget dolor. Donec quam felis, ultricies nec, pellentesque eu, pretium quis, sem. Nulla consequat massa quis enim. Donec pede justo...

**Phasellus viverra nulla ut metus varius laoreet**

Lorem ipsum dolor sit amet, consectetur adipiscing elit. Aenean commodo ligula eget dolor. Donec quam felis, ultricies nec, pellentesque eu, pretium quis, sem. Nulla consequat massa quis enim. Donec pede justo...

**Vestibulum ante ipsum primis in faucibus orci luctus et ultrices posuere cubilia**

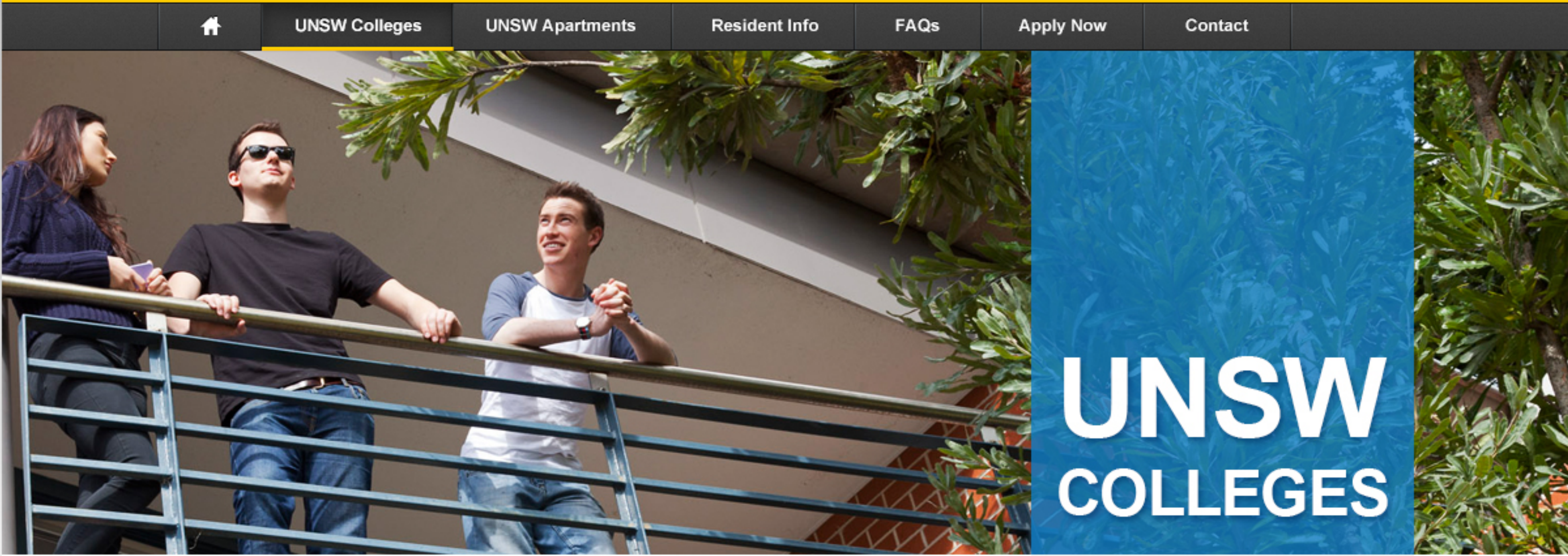
Lorem ipsum dolor sit amet, consectetur adipiscing elit. Aenean commodo ligula eget dolor. Donec quam felis, ultricies nec, pellentesque eu, pretium quis, sem. Nulla consequat massa quis enim. Donec pede justo...



Share



Print



Home > UNSW Colleges

College life at UNSW

The UNSW Colleges comprises six Colleges that fully owned and operated by the University of New South Wales. Colombo House, Fig Tree Hall and the Kensington Colleges (Basser College, Philip Baxter College and Goldstein College) will all open their new doors in January 2014. The old Baxter College will receive a small face lift by way of a new dining hall, and a coat of paint in time to open for the 2014 academic year.

In total 1,130 students will call UNSW Colleges home in 2014. UNSW Colleges are proud of their diverse mix of residents from all over the world as well as students from all corners of the world. For more information on the Colleges and their points of difference as well as information on Scholarships, Awards and Fees please read through the tabs below.

Our Colleges:

Kensington Colleges



Lorem ipsum dolor sit amet, consectetur adipiscing elit. Aenean commodo ligula eget dolor. Aenean massa. Cum sociis natoque penatibus et magnis dis parturient montes, nascetur ridiculus mus. Donec quam felis, ultricies nec, pellentesque eu, pretium quis, sem.

FIND OUT MORE

Colombo House



Lorem ipsum dolor sit amet, consectetur adipiscing elit. Aenean commodo ligula eget dolor. Aenean massa. Cum sociis natoque penatibus et magnis dis parturient montes, nascetur ridiculus mus. Donec quam felis, ultricies nec, pellentesque eu, pretium quis, sem.

FIND OUT MORE

Fig Tree Hall



Lorem ipsum dolor sit amet, consectetur adipiscing elit. Aenean commodo ligula eget dolor. Aenean massa. Cum sociis natoque penatibus et magnis dis parturient montes, nascetur ridiculus mus. Donec quam felis, ultricies nec, pellentesque eu, pretium quis, sem.

FIND OUT MORE

UNSW Hall



Lorem ipsum dolor sit amet, consectetur adipiscing elit. Aenean commodo ligula eget dolor. Aenean massa. Cum sociis natoque penatibus et magnis dis parturient montes, nascetur ridiculus mus. Donec quam felis, ultricies nec, pellentesque eu, pretium quis, sem.

FIND OUT MORE

In this section:

→ UNSW Colleges

[Kensington Colleges](#)

[Colombo House](#)

[Fig Tree Hall](#)

[UNSW Hall](#)

[Fees](#)

[Applications](#)

[Scholarships](#)

[FAQs](#)

[UNSW Affiliated Colleges](#)

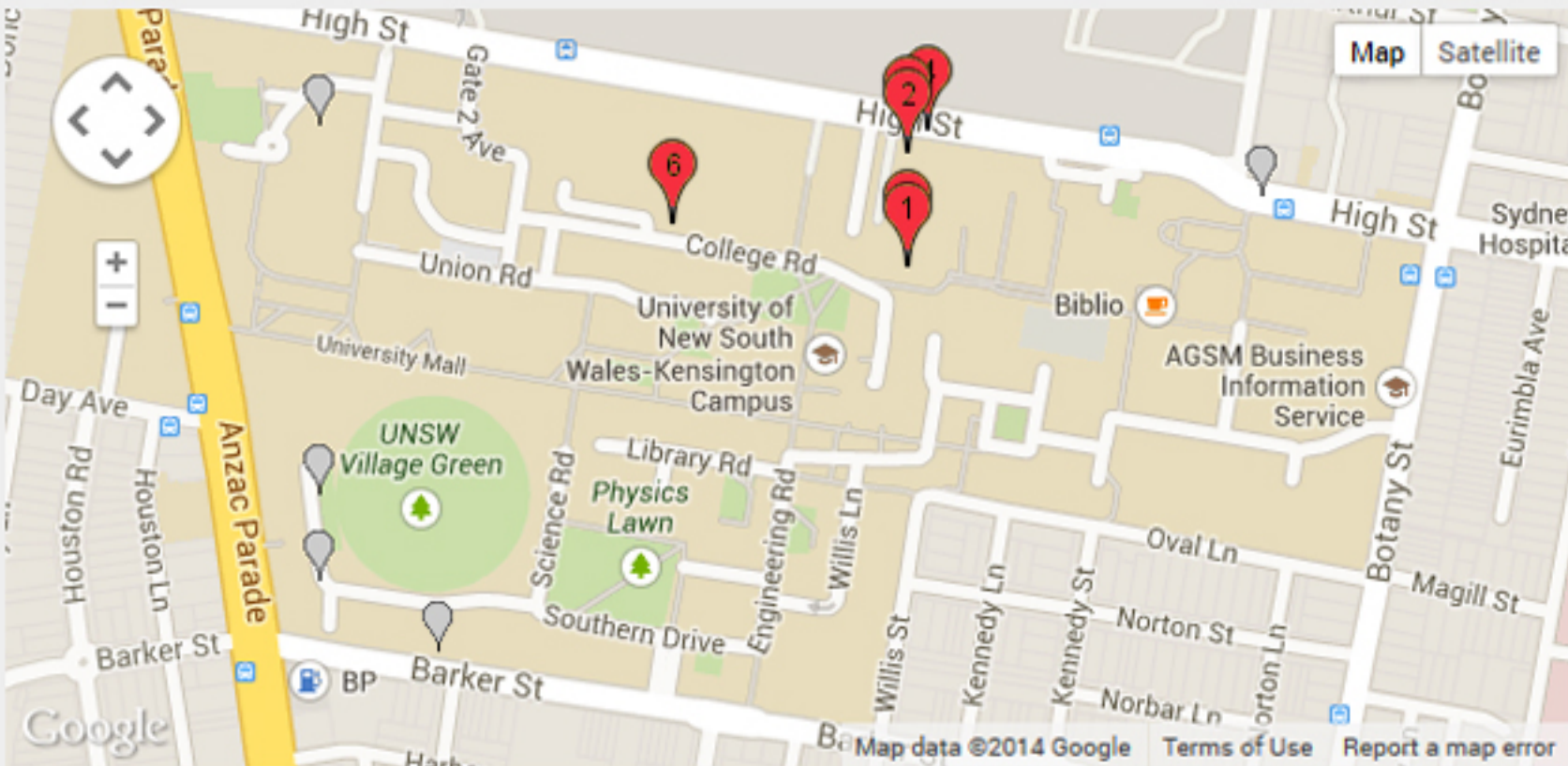
Win an iPad mini

Lorem ipsum dolor sit amet, consectetur adipiscing elit. Aenean commodo ligula eget dolor. Aenean massa. Cum sociis natoque penatibus et magnis dis parturient montes, nascetur ridiculus mus.

[See T&C's here](#)

College Locations

Location of all UNSW Residential Communities accommodation. Please click on the icons on the map below to view the address details.



- 1

Basser College
- 2

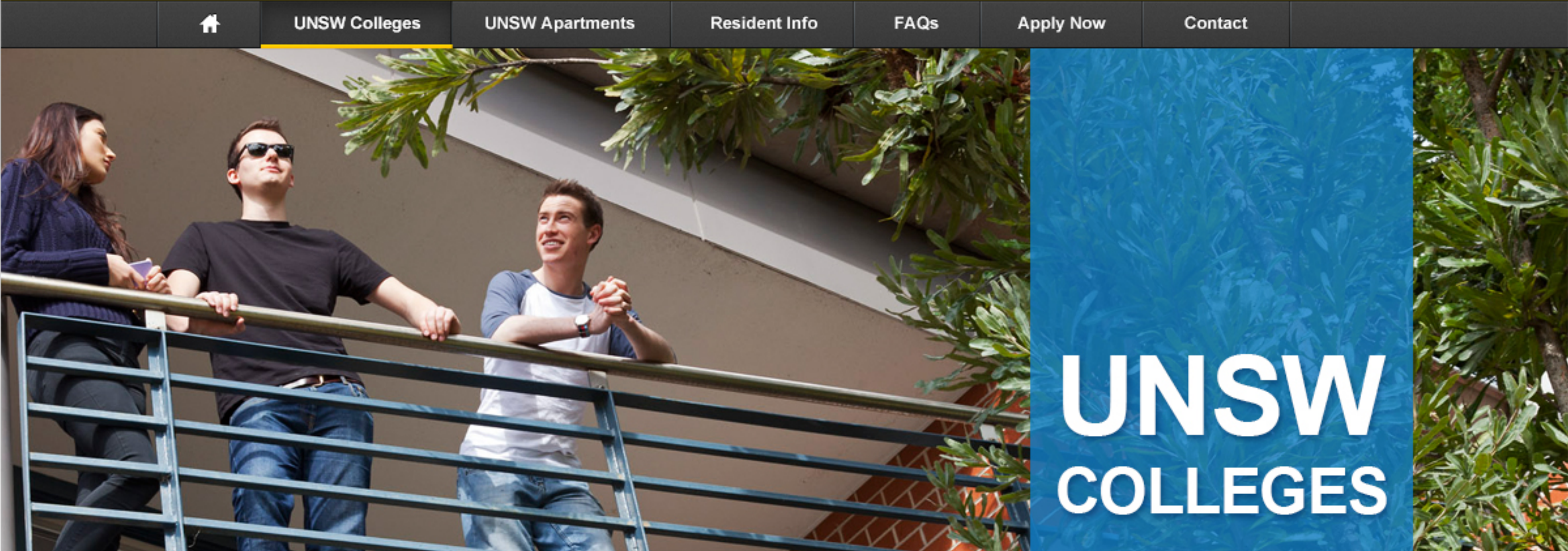
Goldstein College
- 3

Philip Baxter College
- 4

Fig Tree Hall
- 5

Colombo House
- 6

UNSW Hall
- Creston College
- International House
- New College
- Shalom College
- Warrane College



Home > UNSW Colleges > Kensington Colleges

Kensington Colleges

The oldest residential colleges on campus have undergone a profound rejuvenation process in recent years, culminating in the occupation of new facilities in 2014 that have been designed and custom built for these unique student communities, setting a new benchmark for residential colleges in Australia.

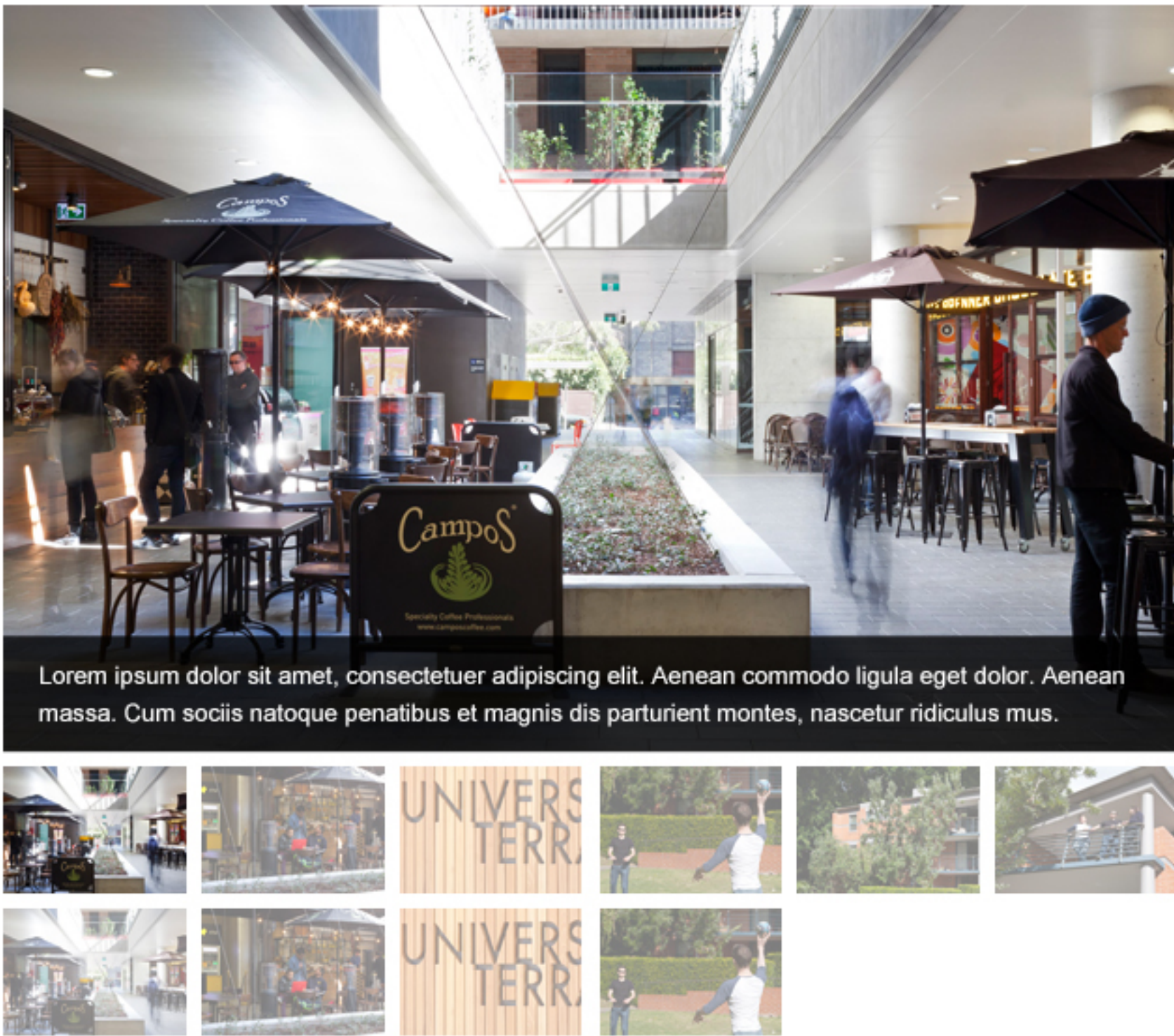
The Kensington Colleges offer a unique experience, combining a strong support network delivered through an established residential care program as well as academic mentoring and tutorials. The Kensington Colleges are fully catered, all rooms have a regular cleaning service; Wi-Fi and all utilities are included in the fees.

Features Include:

- 161 rooms Basser College
- 211 rooms Philip Baxter College
- 150 rooms Goldstein College
- All meals included
- All rooms single occupancy with option of shared bathroom facilities or private bathroom
- Many rooms have balconies
- Furnished recreation and group study rooms on each floor
- Wireless internet and all utilities included
- Large Common Room
- Shared coin operated laundry facilities on ground floor
- Resident staff provide pastoral care, mentoring and academic support
- Membership to the House Committee
- Active sporting, cultural, social and social justice programs and events
- Rooftop bbqs and views of Sydney city skyline & Randwick Racecourse
- Safe and secure environment
- 40 week occupancy

Please review the [Rules of Occupancy](#) and the [Licence Agreement](#) and the [Resident's Obligations](#) for the Kensington Colleges.

Kensington Colleges Gallery



In this section:

- UNSW Colleges
- Kensington Colleges
- Colombo House
- Fig Tree Hall
- UNSW Hall
- Fees
- Applications
- Scholarships
- FAQs
- UNSW Affiliated Colleges

APPLY ONLINE NOW

SEARCH ACCOMMODATION



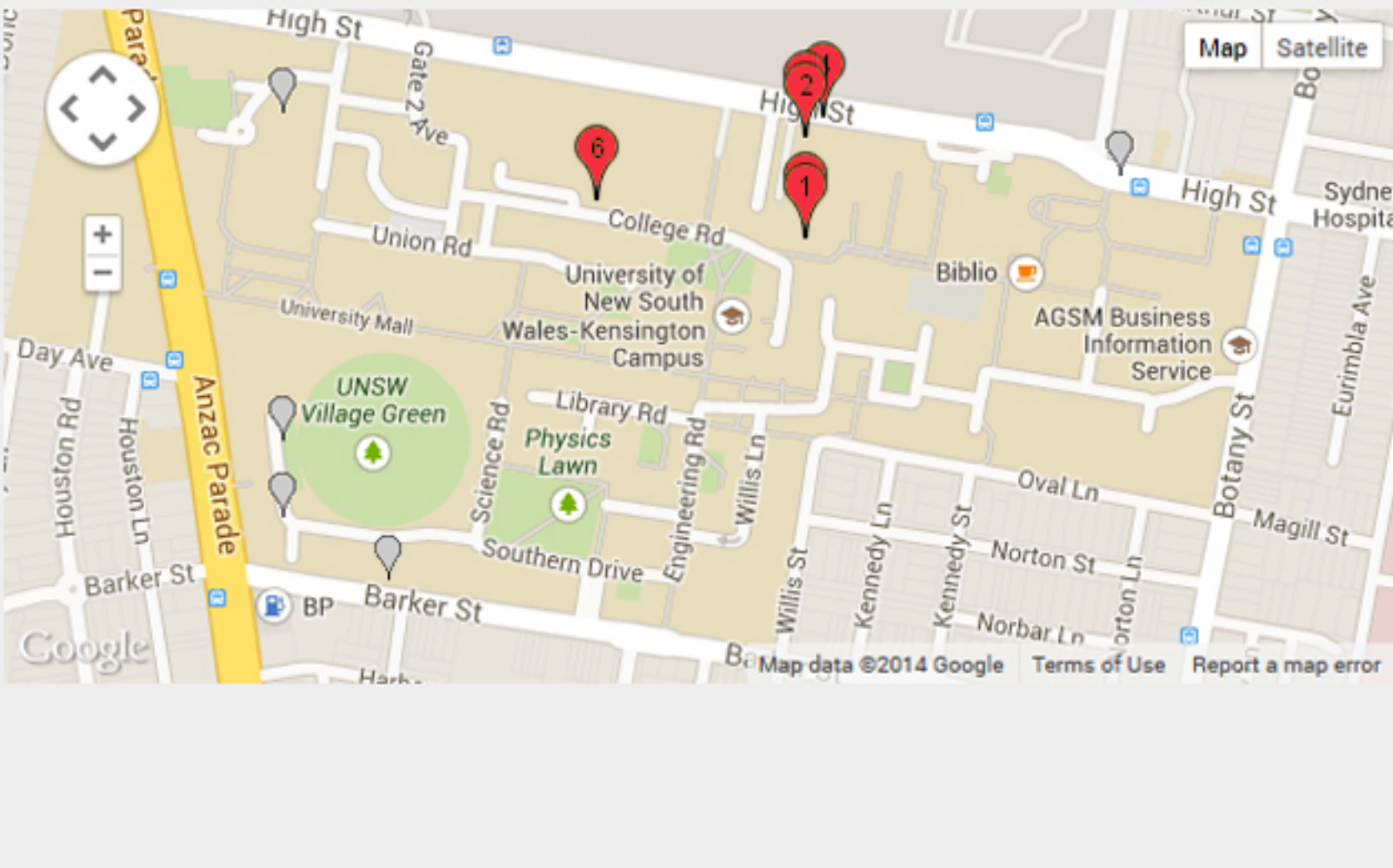
Win an iPad mini

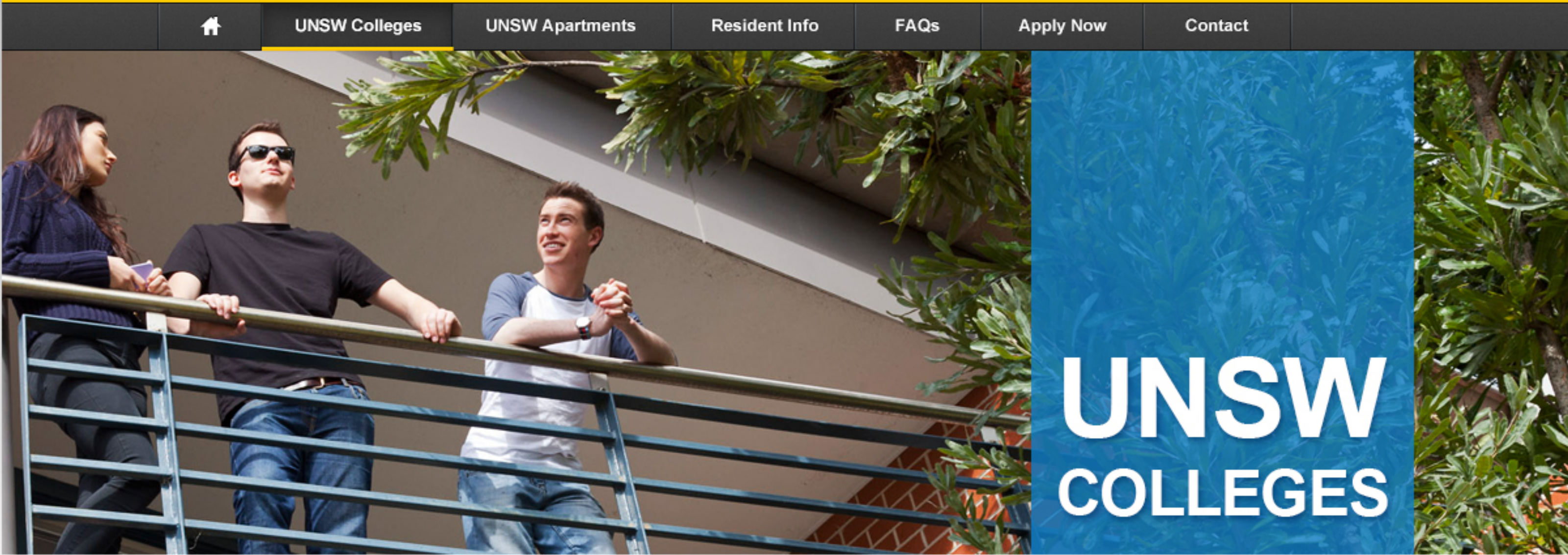
Lorem ipsum dolor sit amet, consectetur adipiscing elit. Aenean commodo ligula eget dolor. Aenean massa. Cum sociis natoque penatibus et magnis dis parturient montes, nascetur ridiculus mus.

See T&C's here →

College Locations

Location of all UNSW Residential Communities accommodation. Please click on the icons on the map below to view the address details.





Home > UNSW Colleges > Applications

Applications

Applications to UNSW Colleges are made online. Once an application is submitted it is reviewed by UNSW Residential Communities and, if successful an offer for accommodation in one of the Colleges will be sent to you.

There is a AU\$100 Application Fee to apply to all UNSW owned and operated accommodation.

Selection Criteria

Offers for residency are based on information obtained from the application and entry to UNSW. Interviews may be required for the Basser College, Philip Baxter College Goldstein College, Fig Tree Hall, Colombo House and UNSW Hall. Early applications are encouraged, even before your high school or university results are finalised.

The Colleges seek to replicate the considerable diversity of the student population of UNSW, with residents coming from a range of courses and programs and a variety of social and cultural backgrounds. In addition particular needs for on-campus accommodation, such as difficulty or distance of travel from the student's home to the University, are taken into consideration when offering places. For this reason, priorty is normally given to international, interstate and country students before local metropolitan students.

Closing Date for Applications

There is no closing date and applications are considered until the Colleges are full.

The Colleges do not advise applicants of the status of their application until we are in a position to make an offer. Please be advised that we only email you on the progress of your application if you are successful. Unsuccessful applicants will not be notified.

Residency Offer Procedure

The first round of accommodation offers will usually be sent to applicants in November of the year prior to commencement or June for the second semester. Once placement of the first round students and the international students are completed a second offer may be made. A third round of offers is usually made after University offers are completed and students are aware of their acceptance at UNSW.

To ensure you are part of this process make sure you get your application in early to provide yourself the best opportunity of being at the top of the waiting list. The residency offer documentation is emailed to the relevant email address. Applicants are advised to check their emails on a regular basis. Successful applicants will be sent an email with instruction for accepting their offer and the deadline dates. The offer acceptances are done online through the Accommodation Application Portal.

In this section:

- UNSW Colleges
 - Kensington Colleges
 - Colombo House
 - Fig Tree Hall
 - UNSW Hall
- Fees
- Applications
- Scholarships
- FAQs
- UNSW Affiliated Colleges

APPLY ONLINE NOW >

SEARCH ACCOMMODATION >



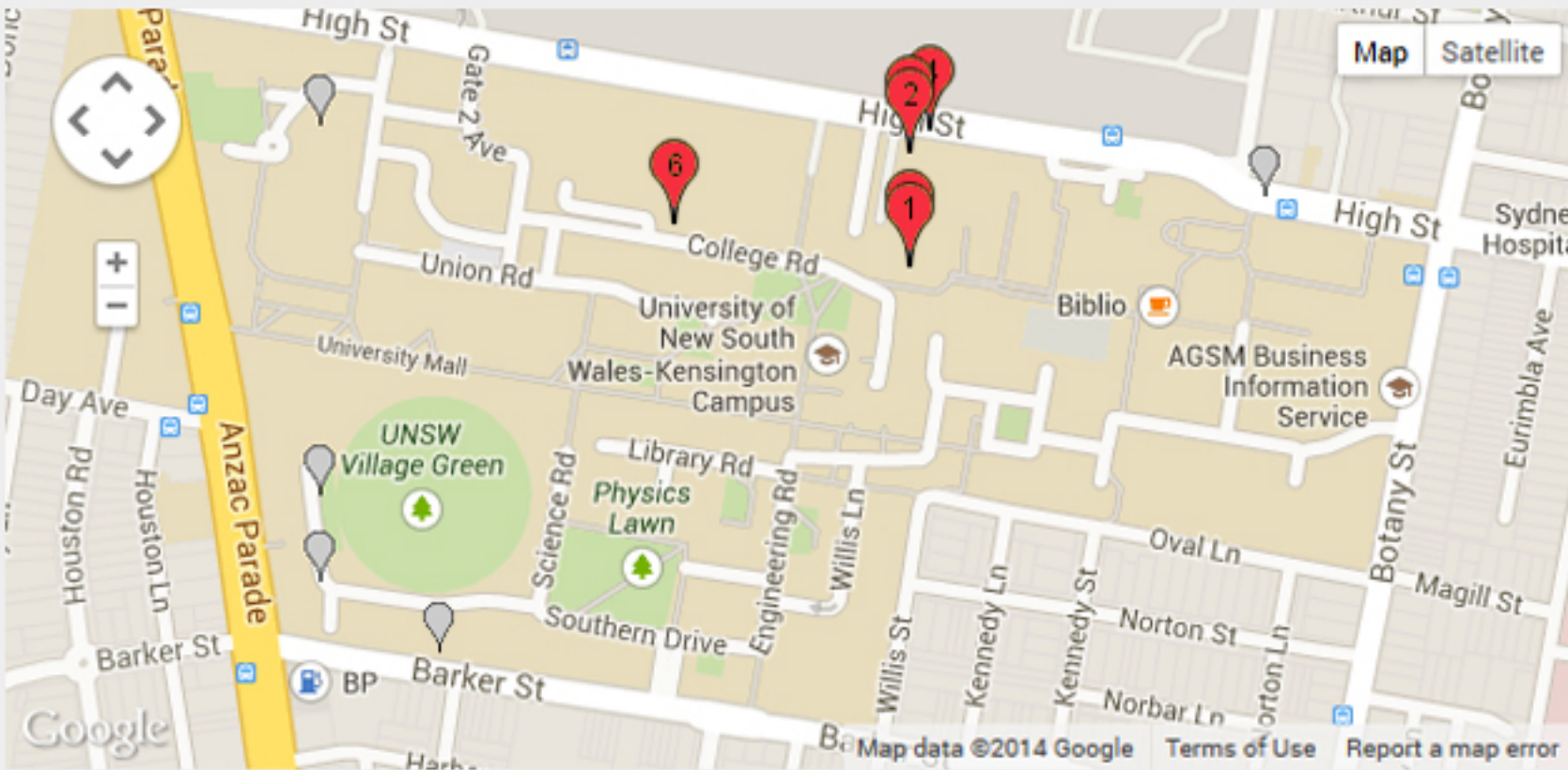
Win an iPad mini

Lorem ipsum dolor sit amet, consectetur adipiscing elit. Aenean commodo ligula eget dolor. Aenean massa. Cum sociis natoque penatibus et magnis dis parturient montes, nascetur ridiculus mus.

See T&C's here →

College Locations

Location of all UNSW Residential Communities accommodation. Please click on the icons on the map below to view the address details.



- 1 Basser College
- 2 Goldstein College
- 3 Philip Baxter College
- 4 Fig Tree Hall
- 5 Colombo House
- 6 UNSW Hall
- Creston College
- International House
- New College
- Shalom College
- Warrane College





[Home](#) > [Resident Info](#) > [Forms and Documents](#)

Forms and Documents

Lorem ipsum dolor sit amet, consectetur adipiscing elit. Aenean commodo ligula eget dolor. Aenean massa. Cum sociis natoque penatibus et magnis dis parturient montes, nascetur ridiculus mus.

Accommodation rules of occupation and generic licence agreement



[Rules of occupation](#)



[UNSW Residential Communities Licence Agreement \(Generic\)](#)

UNSW Residential Forms



[UNSW Apartments Security Deposit Refund Form](#)



[UNSW College Security Deposit Refund Form](#)



[University Terraces Security Deposit Refund Form](#)



[Fee in Advance Refund Form](#)

In this section:

→ [Forms and Documents](#)

[Fee Schedules](#)

[Campus Living](#)

[Close to UNSW](#)



Win an iPad mini

Lorem ipsum dolor sit amet, consectetur adipiscing elit. Aenean commodo ligula eget dolor. Aenean massa. Cum sociis natoque penatibus et magnis dis parturient montes, nascetur ridiculus mus.

[See T&C's here](#) →





[Home](#) > [Resident Info](#) > [Campus Living](#)

Campus Living

Live on Campus and be part of the Community

The aim of university life is to learn, grow and develop as a person whilst experiencing as much as possible in and around campus, to have a true campus experience which involves the most important aspect of University Life, Community.



Coming to University for the first time can be a daunting task. New students face the challenges of studying a new course, meeting new people and learning where classes are in a huge unfamiliar campus!

Studying at University is an exciting time, with countless opportunities presented to students every day. Undoubtedly, the best way to make the most of these opportunities is to live on campus, to be fully engaged in the UNSW community. Exchanging the long daily commute times with time well spent in the well facilitated libraries at UNSW, is a priceless exchange. The time that can be wasted on a bus or a train can be used exploring opportunities with ARC events, ARC clubs and societies, establishing long lasting friendships at the great cafés available right under your new home.

UNSW provides high quality housing for UNSW students, with essential services such as: included wireless internet, access to retail outlets and restaurants, constant security from Campus Security providers, high quality Medical Centre facilities and our award winning Early Years Child Care Centres.

Living on campus at UNSW provides more than just a place to live. It provides a home, as supportive, safe and secure as a true home should be. More than this, it provides a community lifestyle that encourages the new friendships and experiences that are essential to a fulfilling University life.

UNSW on campus housing allows students to truly experience a great university lifestyle. Whether it be hanging out at the Whitehouse for a Pizza with some friends, seeing a band at the Roundhouse, participating in clubs and societies, or simply trading that commute time for studying in UNSW's great facilities. All UNSW housing includes wireless internet from 2014, which allows for even greater flexibility and service to students living on campus.

Being on campus at UNSW is about being a part of a community. The UNSW campus community is a community that supports students from all backgrounds, encouraging them to gain the best experience while studying at UNSW. The Kensington Colleges are some of the oldest residential colleges in Australia, and have a rich cultural heritage at UNSW. The Basser, Baxter and Goldstein Colleges provide not only a home at UNSW for students, but a strong community for students to excel. Pastoral and academic supports, along with social, sporting and cultural activities are only just a few of the services that The Kensington Colleges provide. To be a part of The Kensington Colleges is to be a part of the rich history of UNSW. A time at any of the colleges is a time to forge strong friendships, and achieve the highest in your given area of study.

In this section:

→ [Forms and Documents](#)

[Fee Schedules](#)

[Campus Living](#)

[Close to UNSW](#)



Win an iPad mini

Lorem ipsum dolor sit amet, consectetur adipiscing elit. Aenean commodo ligula eget dolor. Aenean massa. Cum sociis natoque penatibus et magnis dis parturient montes, nascetur ridiculus mus.

[See T&C's here](#) →



Share



Print