

# SAMPLE FLOORPLAN

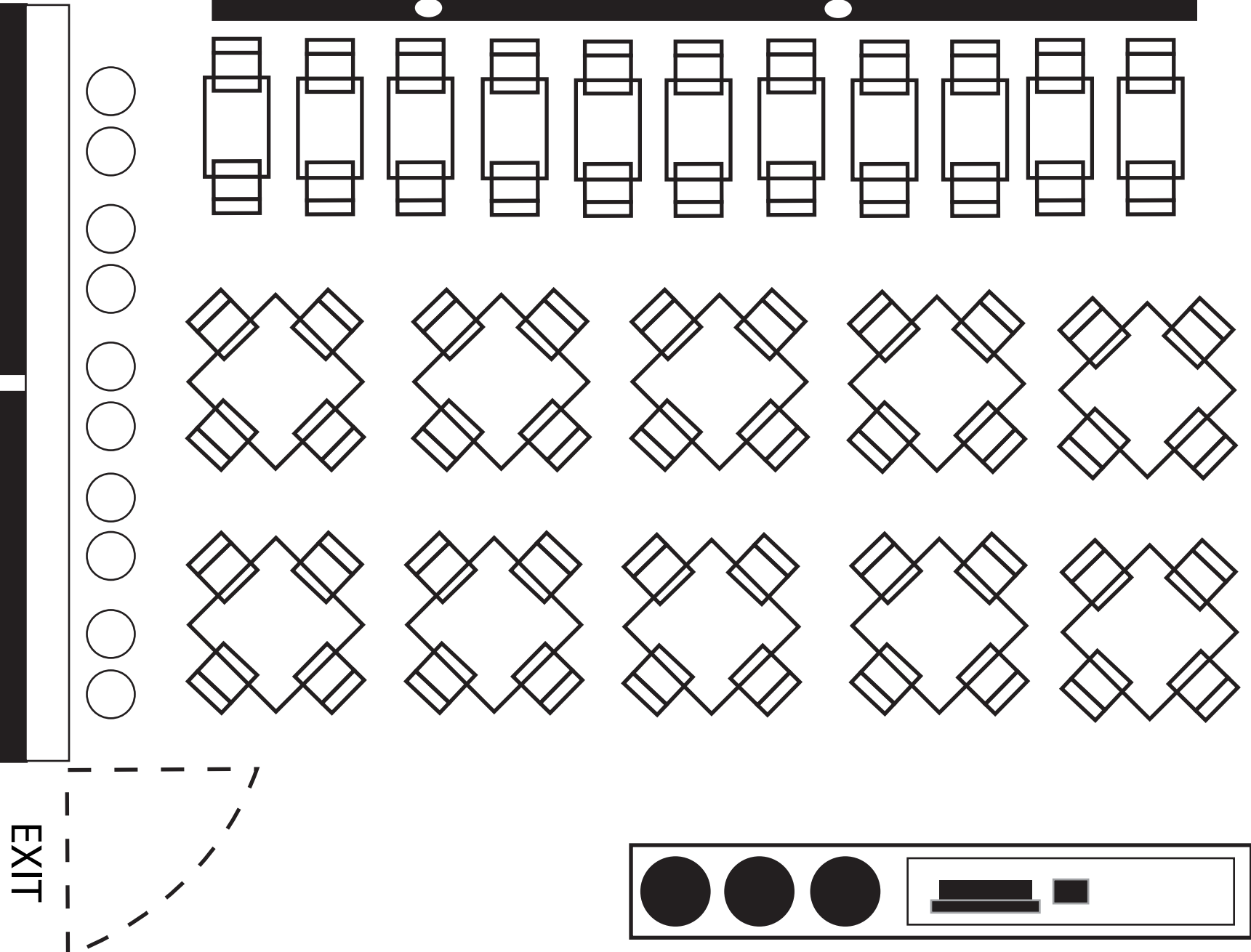
70 SEAT

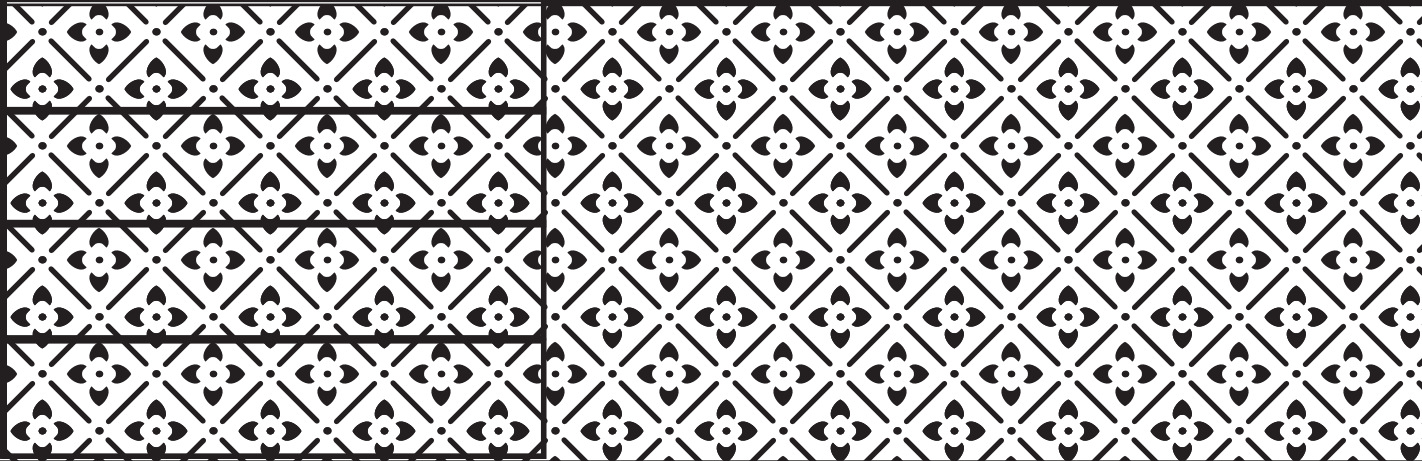
ENTRANCE

EXIT

ORDER

RESTROOM



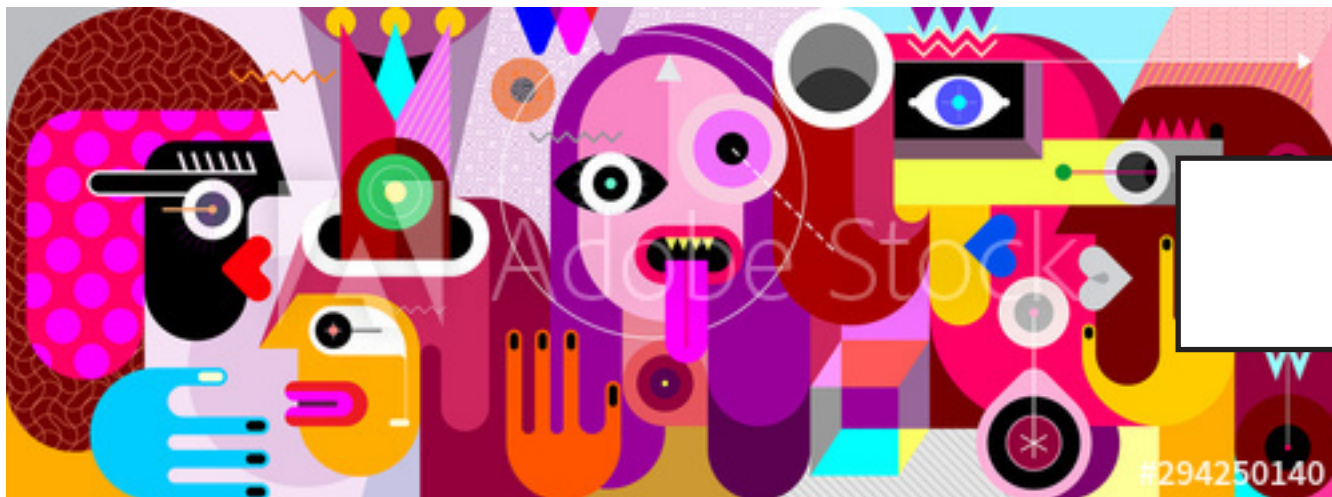




#62352138



#8699270



#294250140

ART INSPIRATION





ART INSPIRATION/  
WINDOW PREP AREA





**Design:** Clean lines / should have more metals / Industrial / Not overly loud



#262864036



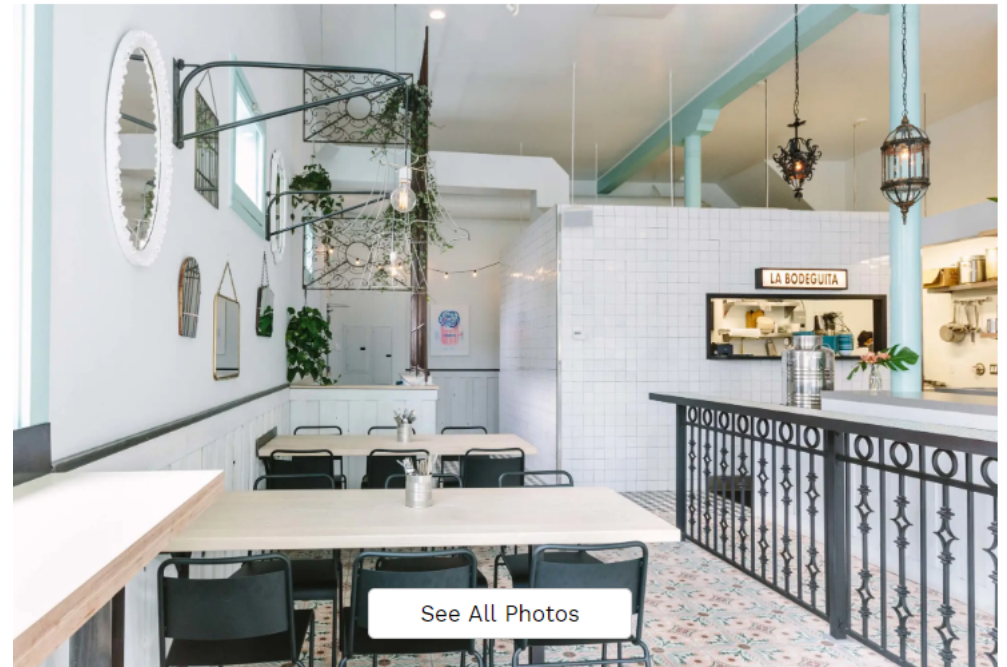
#353616314



#3



**Design:** Great use of color, specific metal elements that should be more street inspired. A window for pick up that should be located out-wardly





## Design Guide

Calle is our representation of a Latin American restaurant for the next generation. We want to take our cultural representation and define it in the design aesthetic.

A clean design element is essential with specific industrial tones to really highlight the "calle" or street elements of the space. Using color only sparingly and with intention. The idea of incorporating neon lighting, street art, graffiti, in splashes, or in a statement piece.

The highlight of the space will be the prep area that surrounds the entrance and/or order line that will showcase our "Panaderos" making fresh arepas, tortillas, and breads.



**Design:** The focus on the chicken is great. The white and tile remind you of its Greek inspiration without being too literal and loud.



Calle's mission will be to bridge the gap between Latin American cuisine to deliver a new tradition to the consumer. We are here to introduce our melting pot of cultures to the world. Calle represents the intersection of all Latin American Cuisines best offerings coming together to create a new experience.

The business will highlight the best of Latin American cuisine in an approachable and an exciting way. We offer an environment where the customer can experiment with Latin cuisine, an interactive adventure in which you are in the driver seat.

Welcome to Calle.