

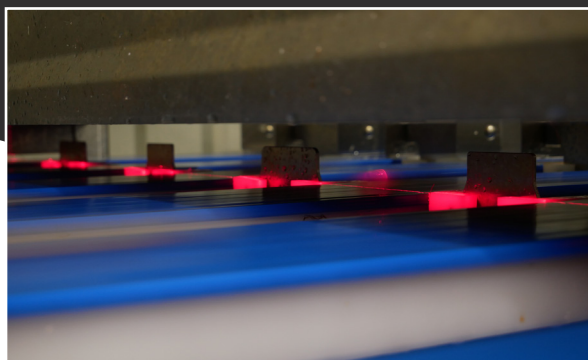
## Inline Vision Grader

A new approach for grading and inspecting HLSO and PUD



Our new **Inline Vision Grader** vastly improves the grading process using an entirely new technology.

High-precision, shrimp-by-shrimp laser imaging reduces the need for re-grading and provides unparalleled uniformity.



### Precise Grading

- Uniformity ratio as tight as 1:1!
- Precise target counts, consistent processing, and tight product uniformity.



### Reduce Manual Labor

- Reduced demand for material inspection and time spent sampling and re-grading product.
- Easy to operate, less skill needed.



### Real Time Process Control and Data logging

- Innovative reporting features enable data-driven plant optimization.
- Batch-by-batch, source-by-source, and day-by-day logging of all grading.



Put the **right shrimp** in the **right bag every time**.  
Meet the uniformity specifications of even **the most demanding buyers**.

## Product Specifications

### Product Type

- HLSO and PUD

### Capacity:

- ~2.75 MT/Hr. Based on 25 count per pound HLSO (~45 shrimp/s)

### Ejection

- Ejects into 6/8/10 Bins.
- Automatically inspect for bits, broken shrimp and heads.

### Automated Reporting

- Real-time reporting features.
- Track plant operations at the machine, on your computer, or your mobile device.

## Nominal Inline Vision Grader Dimensions

	Width	Height	Length
<b>6-Bin</b>	9'2" (2.79m)	12' (3.66m)	63'8" (19.41m)
<b>8-Bin</b>	9'2" (2.79m)	12' (3.66m)	71'4" (21.74m)
<b>10-Bin</b>	9'2" (2.79m)	12' (3.66m)	79' (24.08m)

### Singulation

### Imaging

### Ejection

