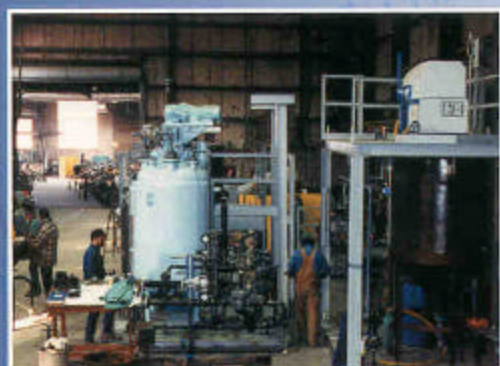
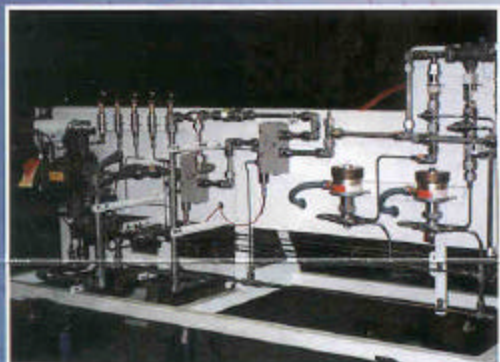




**PL** Process  
Construction



# INDUSTRIAL PIPING SKIDS MODULAR UNITS PIPE SPOOL FABRICATION



- **Quality Workmanship**
- **On Time Projects**
- **Single Source Services**
- **Midwest Location**
- **Skilled Workforce**
- **35,000 Sq. Ft. Facility**



Activities performed by Process Construction, Inc. are conducted in accordance with the requirements of the ASME Boiler and Pressure Vessel Code and The National Board of Boiler and Pressure Vessel Inspectors, as required.



**Process  
Construction**

Process Construction, Inc.  
P.O. Box 14186  
2128 State Avenue  
Cincinnati, Ohio 45214

513/251-2211 phone  
513/251-2267 fax  
**1-888-251-2211**

[www.processconstruction.com](http://www.processconstruction.com)

**ON TIME PROJECT COMPLETION - SHIPPED TO YOUR FACILITY**



**Process Construction, Inc.**

**P.O. Box 14186  
2128 State Avenue  
Cincinnati, OH 45214  
Phone (513) 251-2211**