

# TM-FLOW EXAM



Simultaneous measurement

**7 min**

Fast Test



No Human Error

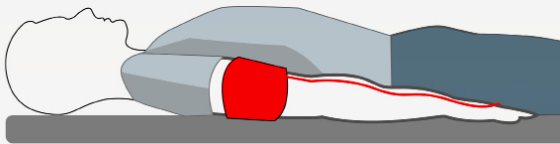


Accurate results

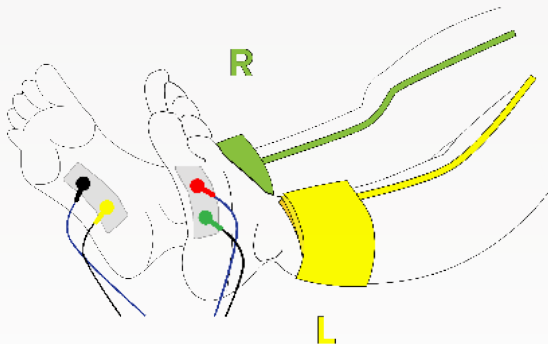


Clear report

The patient is lying down and relaxed.



Pressure cuffs, oximeter sensor and disposable electrodes are attached to the skin of the patient.



**NON-INVASIVE  
AND FAST EXAM**

**FOR A TM-FLOW EXAM,  
PLEASE CONTACT US  
FOR AN APPOINTMENT**



MD OFFICE CONTACT

LD TECHNOLOGY



MAKING A DIFFERENCE

**WHAT IS TM-FLOW ?**

TM-Flow is a medical device that performs a non-invasive exam of your nerves and arteries.



**GET TESTED TODAY !**

## NERVE AND ARTERY SYMPTOMS

## WHY TM-FLOW ?

## ARE YOU AT RISK ?

### ARE YOU EXPERIENCING ANY OF THE FOLLOWING SYMPTOMS ?

- ✓ ..... Fatigue
- ✓ ..... Headache
- ✓ ..... Dizziness
- ✓ ..... Exercise Intolerance
- ✓ ..... Fainting
- ✓ ..... Tingling in the Toes or Fingers
- ✓ ..... Claudication
- ✓ ..... Painful muscle cramping in the hips, thighs or calves when walking, climbing stairs or exercising



ASK FOR AN  
APPOINTMENT TODAY

Artery and autonomic nerve dysfunction or damage are the most frequent complications of smoking or overweight or aging or chronic diseases such as diabetes, hypertension, hepatitis, thyroid dysfunction.

Although the symptoms may imitate each other, it is imperative to distinguish between autonomic neuropathy and disease because the treatments are quite different.

TM-FLOW allows to distinguish between autonomic neuropathy or artery disease.

Therefore, TM-FLOW offers the physician more treatment option.



HELP YOUR DOCTOR  
TO DISTINGUISH THE CAUSE  
OF YOUR SYMPTOMS



Lower Artery and ANS damage  
**risk group in the USA**

**50+**

Population over 50 years old  
with cardiovascular factors:



HYPERTENSIVE



SMOKING



OVERWEIGHT



DIABETIC

**70+**

Everyone older than 70

**OVER THAN 45 MILLION**

**Everyone in the risk group  
should be examined with TM-Flow**