

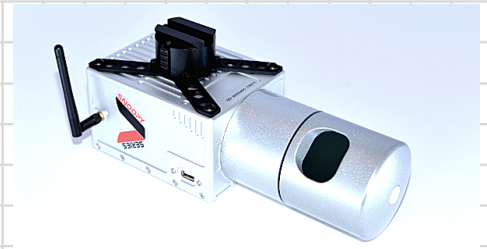
We offer mobile LiDAR systems for the ground vehicle (car, truck, boat, backpack, etc.) as well as low-altitude aerial platforms such as UAV's and helicopters.



A- SERIES

The A-Series is capable of being mounted on a ground vehicle or UAV and can be moved from one to the other in a couple of minutes.

A-Series HD
32-lasers, $+10^{\circ}/-31^{\circ} \times 360^{\circ}$ FOV
100m range, 70m AGL
<2cm accuracy *PPK
700kHz, 2 echoes



A-Series 120
8-lasers, $+3^{\circ}, -17^{\circ} \times 360^{\circ}$ FOV
150m range, 122m AGL
<3cm accuracy *PPK
420kHz, 3 echoes



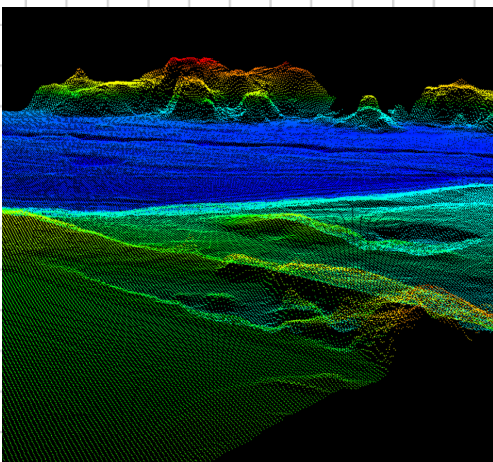
A-Series 60
16-lasers, $\pm 15^{\circ} \times 360^{\circ}$ FOV
100m range, 60m AGL
<4cm accuracy *PPK
300kHz, 2 echoes



MiniV
1-laser, 360° FOV
150m+ range, 80 to 120m AGL
1.5cm accuracy *PPK
100kHz, 5 echoes
100 scans/sec

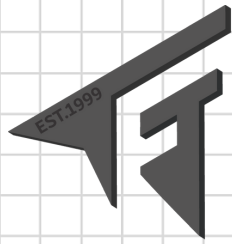


V-SERIES



V-Series VUX-UAV / VUX-1HA
1-laser, 330 to 360° FOV
350m+ range, up to 530m AGL
5 to 15mm accuracy *PPK
500 to 1000kHz, 5 echoes
200 to 250 scans/sec
**specs vary per VUX model*



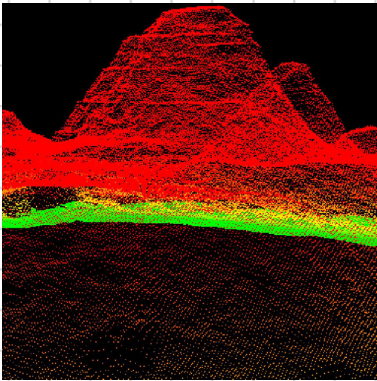


LIDAR USA

UAV 3D Mapping Solutions

REVOLUTION

The new Revolution mobile LiDAR systems are for UAV's only. These systems can be mounted on the DJI M600 and many other UAV's. The R2-Puck and R2-M8 are also available for the DJI M200.



Revolution HD

32-lasers, $+10^{\circ}/-31^{\circ} \times 360^{\circ}$ FOV
100m range, 70m AGL
<2cm accuracy *PPK
700kHz, 2 echoes



M200 Revolution 60

8-lasers, $+3^{\circ}, -17^{\circ} \times 360^{\circ}$ FOV
150m range, 122m AGL
<3cm accuracy *PPK
420kHz, 3 echoes



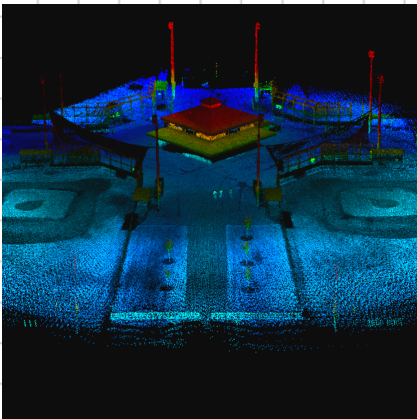
M200 Revolution 120

16-lasers, $\pm 15^{\circ} \times 360^{\circ}$ FOV
100m range, 60m AGL
<4cm accuracy *PPK
300kHz, 2 echoes



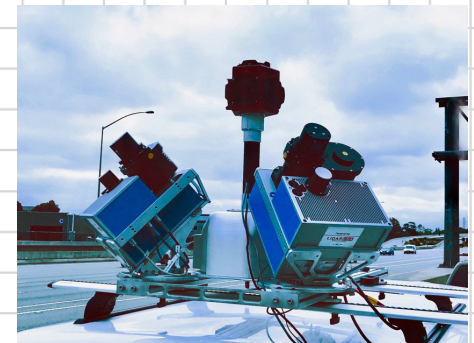
HIWAY MAPPER - Z+F PROFILER

Our roadway scanning systems include two systems that are not UAV-cable (ground only), including the HiWay Mapper - Z+F Profiler (and IMAGER series) and the HiWay Mapper - Faro Focus. All A-series systems can also be deployed as a HiWay Mapper.



Z+F Profiler

1-laser, 360° FOV
119m+ range
0.5mm accuracy *PPK
1.016mHz
200 scans/sec
*For IMAGER specs see the Z+F website.

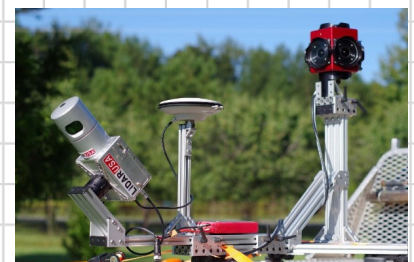


Faro Focus

1-laser, 305° FOV
120 to 350m+ range
0.5mm accuracy *PPK
976kHz
100 scans/sec



HiWay Mapper A-Series HD Scanner
See the A-series information



AERIAL PLATFORMS

LiDARUSA systems can be deployed on any platform that meets the payload and physical requirements to attach the system. They have no communication with the platform ensuring portability between vehicles.

The most common platforms are the M200 and M600. They are easily portable and fly for 15-25 minutes depending on UAV/LiDAR payload/batteries.

The Harris Hybrid Multi-copter is gas-electric and can fly for up to 2.5 hours.

The VelosUAV helicopter provides extended flight times, excellent hover time and high speed, with even more payload capacity.

The Multi-copter VTOL will be available in early 2019. This offers much faster flights which is very useful for the scanners with a high data rate. It is capable of carrying a 6 kg package for over 45 miles.

Helicopter options are also available.

Matrice 200 Series

38 min max flight time (30% Battery)
2 kg max payload capacity
Easily portable and easy to start



Matrice 600 Pro

23 min max flight time (30% battery)
6 kg max payload capacity
Easily portable and easy to start



Harris Hybrid

2+ hour flight time
3 kg max payload capacity
Dual generator and battery power
Made in the USA
PixHawk flight controller
Compact travel size and easy to start



VelosUAV

45 min flight time
Electric
PixHawk flight controller
Transport cases
Three propeller design for stability



VTOL V380

110 km max range
90 min max flight time
6 kg payload weight capacity
Excellent aerodynamic design
Full composite material body
Available in early 2019





LiDARUSA
UAV 3D Mapping Solutions

CAMERAS

LiDARUSA supports a variety of standard UAV cameras that are suitable for colorizing the point cloud. This includes all DJI cameras.

Advanced camera options for thermal, multi-spectral and metric photogrammetry are also supported.

Sentera

Options for RGB, NIR, and Near Red Edge for NDVI applications.



PhaseOne

These metric cameras are excellent solutions for the highest quality mapping and where lighting may suffer.



The LadyBug5+

This 360° spherical camera is the choice for our HiWay Mappers.



LiDARUSA's ScanLook software is included with each system. This includes the data capture software and the desktop processing software.

The ScanLookPC desktop software performs all of the data fusion and geo-referencing in virtually any coordinate system.

Control point correction and strip alignment is also included.
Contact us for prices or more information.

About LiDARUSA

LiDARUSA, also known as Fagerman Technologies, is a family owned business just outside of Huntsville, AL. LiDARUSA specializes in laser scanning, photogrammetry, instrumentation and all things geomatics. Years of experience working on best-in-class products have developed our sense of quality and leadership necessary to build only the best systems.

Visit www.lidarusa.com for more information and more sample data sets.