

Made In Australia

 **Reliable**

Ignition Switch Kit

Instructions



www.fordignitionswitch.com.au
1300 935 625



Suits
BA-BF FALCON
SX-SY TERRITORY
(2002-Mid 2008)

Patent Pending



Switch Removal

1. Assess the problem to ensure it's a switch problem. Look for 1 or more of the problems before proceeding.

When key is turned to the start position the key does not return to the on position causing radio, electric windows etc. to not work unless key is manually turned back to the on position.

The key turns freely without restriction and the accessories, on and start do not work (back of switch fallen off)

When the key is turned to the start position the spring returns the key back to accessories instead of on.

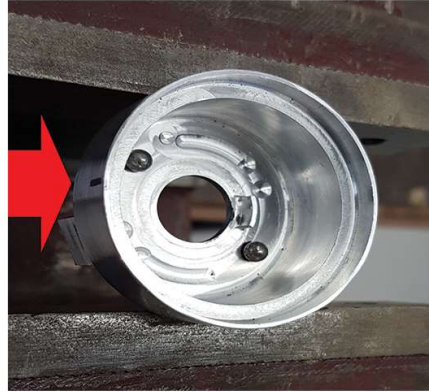
2. Remove 20amp ignition switch fuse.
3. Release steering column height adjustment bar and pull steering column all the way down toward yourself and as low as possible.
4. Remove cowling from steering column.
5. Remove wiring harness from underneath the bracket using a flat screwdriver.
6. Unplug green connection above ignition barrel.(Model with adjustable foot pedals unplug white connection).
7. Using a small flat blade screwdriver and hammer carefully open 3 of the 4 peened points on the switch to remove the wiring harness and remove internal parts of the switch including the ball bearings.
8. Insert removal tool into switch housing, tighten middle bolt firmly and tighten side bolts on tool to remove existing switch housing.
9. Using a pin punch and hammer, tap switch retainer pins out from inside to allow new switch to be installed.
10. Take note of switch identification points on left side of housing, also observing yellow plastic and loom positions.
11. Check existing parts for broken debris and ensure springs are there.



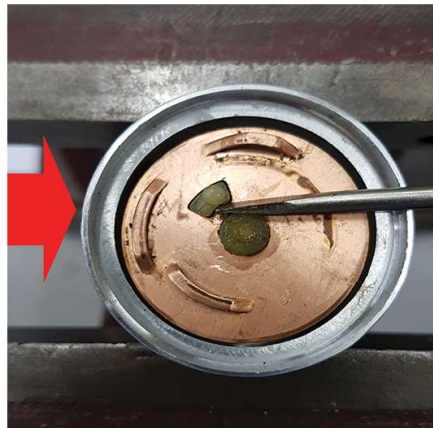
Reliable
Ignition Switch Kit

Switch Install

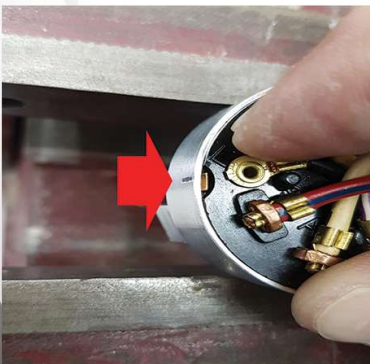
12. In a vice, **GENTLY** clamp the new switch housing making sure the mark on the outside of the housing is to your left while you build the switch.
13. Insert 2 ball bearings into correct position.



14. Insert yellow plastic spring housing ensuring it is the correct way around and springs are in place.



15. Insert copper plate ensuring it's not upside down and terminals facing up.



16. Hold copper plate down with small screwdriver and fit wiring harness using the indication marks as shown.
17. Carefully with a cross peen hammer tap the 4 securing points of the switch housing and ensure they are tight.

Switch Install

18. With a pin punch and hammer, from inside of the column where the switch housing seats, tap the 2 retainer pins out to allow for installation of new switch.
19. With the key removed from the ignition, install new switch remembering to check internal spring is fitted into end of new switch.



- (Sometimes there are burs on the inside of the steering column from factory drilling and can interfere with the installation of the new switch. If so use a small flat screwdriver to remove burs.)
20. Holding switch in with your left hand, tap the rear pin in to hold switch in place. (This will be enough to hold switch for next step.)
 21. Plug in green, main white and white foot pedal adjusting plug (If fitted) back into sockets and re-fit main plug to securing bracket.
 22. Replace Fuse shown in installation video provided in kit.
 23. Start car testing switch is ok and turn top of wheel to 240 degree to make room to punch in front retainer pin.
 24. Again holding the switch and pin punch with left hand tap pin to secure.
 25. Check for movement of switch, if any movement is found use pin punch to tap first pin in further. Replace cowling and jobs done.

Congratulations!

1300 935 625

www.fordignitionswitch.com.au

Reliable
Ignition Switch Kit