



# ARTWORK PREPARATION INSTRUCTIONS

---

## Recommended Design Programs

We recommended creating your final artwork in any of the following applications:



**Adobe Illustrator**



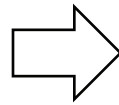
**Adobe In-Design**

## Embed All Fonts

Please embed or outline all fonts used in your document before sending your final artwork.



*Editable Font*



*Font converted to shape.  
Previewed in outline mode.*

## Font Size

For acceptable legibility, text should be no smaller than 6 points.

## Bleed

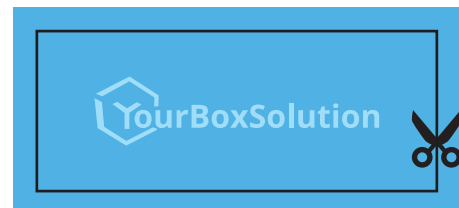
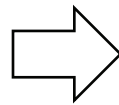
All artwork MUST include 1/8" bleed past its final trim/cut line.

This prevents a white line down one or more edges of your print, caused by very slight variations in die-cutting and trimming.



**No Bleed**

*Blue background does not cover  
area outside the cut line*



**Added Bleed**

*Blue background extends outside  
the cut line*

# ARTWORK PREPARATION INSTRUCTIONS

---



## Linked images

Please check that all linked images are embedded in your final artwork.

## File Naming

Make sure your art files have clear names, related to your art.

If you have multiple orders, please send art files in separate folders related to each order. This will help to avoid any confusions.



## Print Ready File Formats

Our preferred format for accepting artwork is a high resolution PDF.

### JPG, PNG Formats

When using images be sure that your resolution is set to 300 pixels/inch.



*72 DPI Blurry image*

**VS.**



*300 DPI Clear image*

## Set color mode to CMYK

Convert all your art files to CMYK color mode (or Grayscale if you are doing a Black/White layout). Files must be set up as CMYK for colors to print accurately.



*RGB color mode*

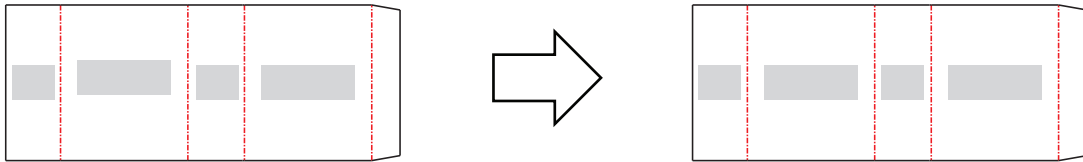
*CMYK color mode*

# ARTWORK PREPARATION INSTRUCTIONS

---

## Center elements

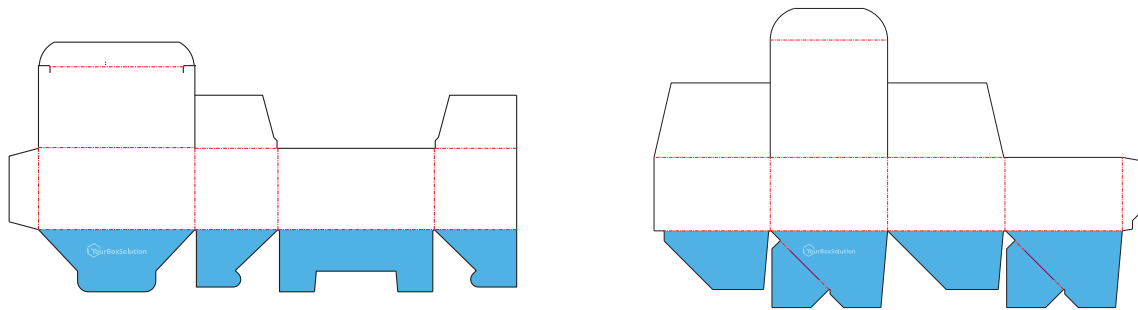
Make sure all text and design elements are centered within each panel, and they line up appropriately.



*Center and align art on all panels*

## Art on bottom flaps might not be visible

Be aware that art on the bottom flaps of boxes (mostly LB and CB) might not be visible. If you are concerned about this, please order a finished sample prior to production.

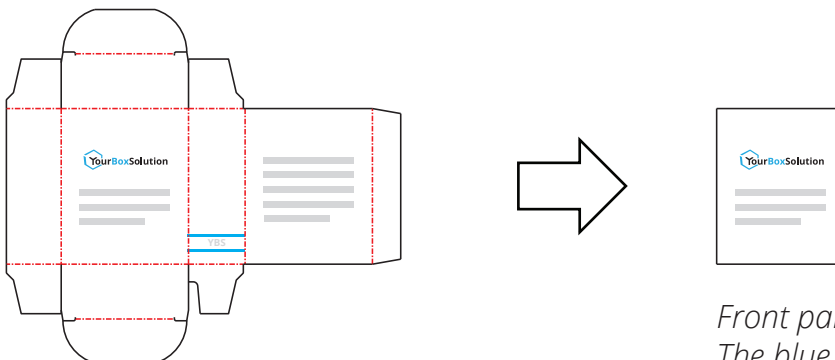


*LB Locked Bottom Flaps*

*CLB Crash Lock Bottom Flaps*

## Art spill on adjacent panels

Look for line segments and clipping masks that spill onto adjacent panels or are hidden by score lines and might be visible on finished boxes



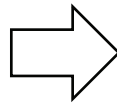
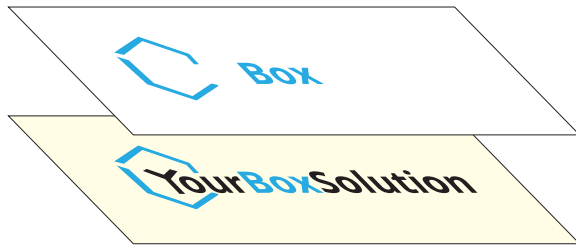
*Front panel end result  
The blue lines spill on the front panel*

# ARTWORK PREPARATION INSTRUCTIONS

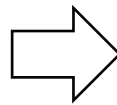
---

## Foil / Emboss / Clear Gloss / White Ink Art

Please send us the foil / emboss / clear gloss / white ink art as separate vector art files. Make sure you delete all of the art that is not going to be treated specially in these files otherwise we may end up foil stamping / embossing / glossing the wrong art.



*Save Foil / White Ink layers as vector shapes in separate files.*



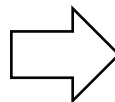
*Art Layer has Transparent Background*

*White Ink Separate Layer ( Kraft Boxes )*

## Black Text

All black text should be set as K 100% only.

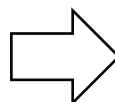
Aa



C:	<input type="text" value="0"/>	%
M:	<input type="text" value="0"/>	%
Y:	<input type="text" value="0"/>	%
K:	<input type="text" value="100"/>	%

## UPC Codes Color

All UPC codes should be sent as K 100% only.



C:	<input type="text" value="0"/>	%
M:	<input type="text" value="0"/>	%
Y:	<input type="text" value="0"/>	%
K:	<input type="text" value="100"/>	%

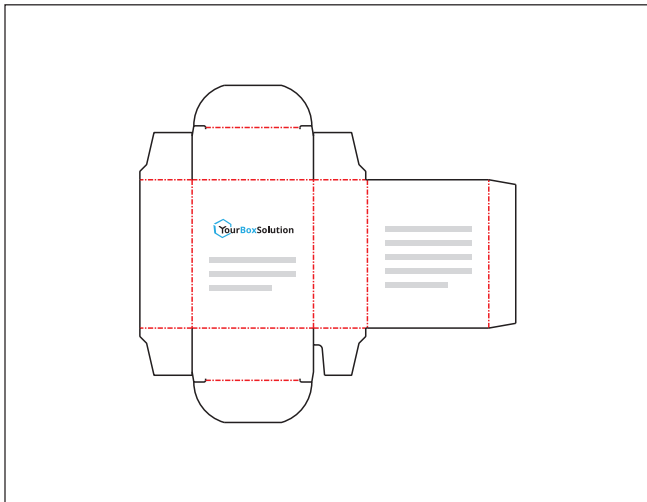
# ARTWORK PREPARATION INSTRUCTIONS

---

## Send a copy of the art files without the template lines

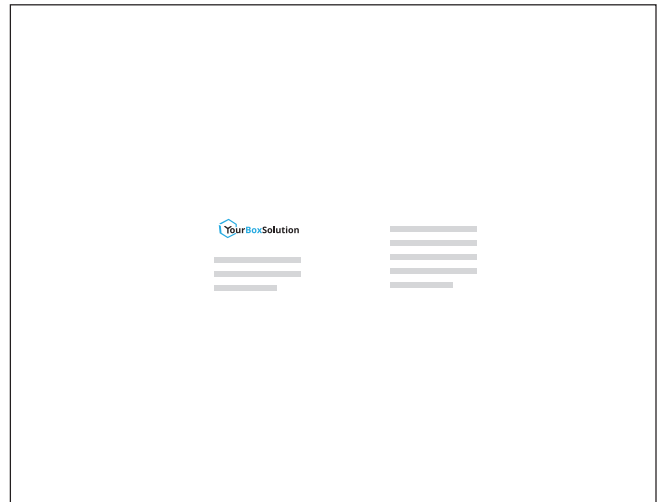
Please send the art files without the template lines too. You can send a lines-on version for reference, and always include a no-lines version for each box.

This eliminates the risk of errors in case we need to flatten the art.



*art-file\_template.pdf*

*Art with template lines visible.*



*art-file.pdf*

*Only art that will be printed is visible in this file.*

## Submitting your order

Once you have confirmed your art meets our requirements please email your artwork to your sales representative or to [Orders@YourBoxSolution.com](mailto:Orders@YourBoxSolution.com).

If your art is too large to email please send via [www.WeTransfer.com](http://www.WeTransfer.com)