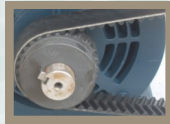
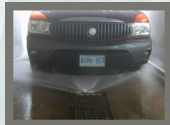
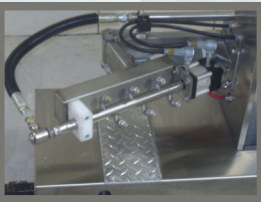
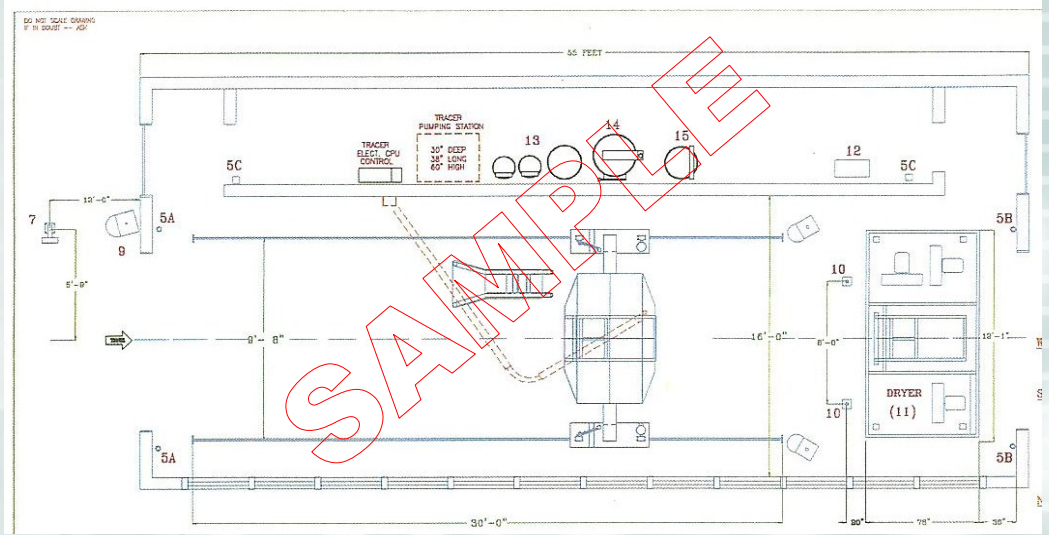


Tracer 2 HPI Series





Standard Features

Measures 4 sides and contours top profile of vehicle

Top follower arm with oscillating blaster, flipping to clean rear of vehicles

On board side oscillating rocker panel blasters

High side blasters for high pressure application, separate low pressure arch

Dual direct drive with speed controller

30 hp motor with Arimitsu 3615 pump with cogged drive belt system

Stainless steel arches and nozzles

Unlimited wash packages

Imbedded industrial pc with real time software running with digital inputs and output modules

Internet and network ready

Developed and
manufactured in
Canada



	Minimum w/o blower		Minimum with blower		Recommended w/o blower		Recommended with blower	
Building Requirements	Standard	Metric	Standard	Metric	Standard	Metric	Standard	Metric
Bay Length	32'	9.75m	36'	11m	40'	12.2m	50'	15.3m
Bay width	12'	3.66m	12'	3.66m	15'	4.6m	15'	4.6m
Bay Height 90" (229 cm)	11'	3.35m	11'	3.35m	12'.6"	3.84m	12'.6"	3.8m

Service Requirements								
Electrical	Tracer	100 amps - 208/230 volts		75 amps - 460 volts		60 amps - 575/600 volts		
	Dryer	125 amps - 208/230 volts		75 amps - 460 volts		60 amps - 575 volts 3 ph. 60 HZ		

Notes: All overhead doors and ceiling obstructions must be kept clear of dryer and service booms when equipment is operating