



KRAMMER
TECHNOLOGY

CHRISTIAN KRAMMER, MARCH 2017

DESIGN GUIDELINE FOR EMBEDDED COMPUTER CASE

Krammer Technology is looking for a unique embedded computer cases. The case should look different as standard cases from the market place. The case will be installed in an industrial environment and therefore it should not be a playful design. It should be a clean and simple design and transmit high quality.

The case consists of 2 pieces. Bottom plate and outer 1 piece case. The outer case can also have a freeform design features because it will be 3D milled out of 1 aluminum block. There are 2 preferred case shapes: Squared and Round. The dimensions for both options are in the design requirements.

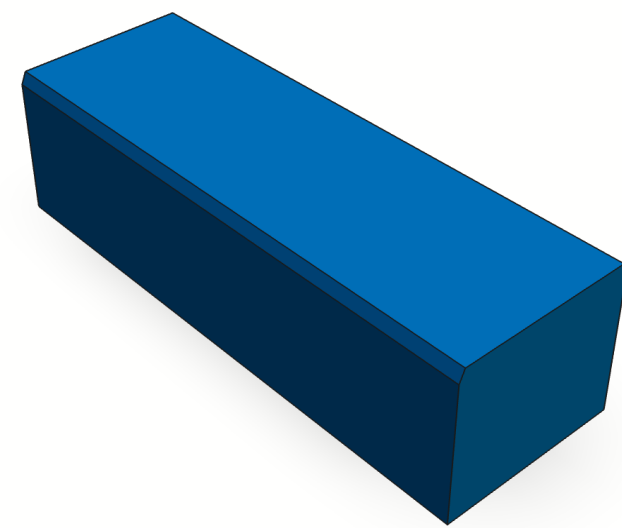
This customized case design should have minimum a unique design feature which can be applied to all 3 case sizes.

The company logo “K” should be placed on the case. The logo can be engraved, embossed, or deposed. The product name will be cMain and should be also engraved on the case as well.

The preferred colors are black and silver.

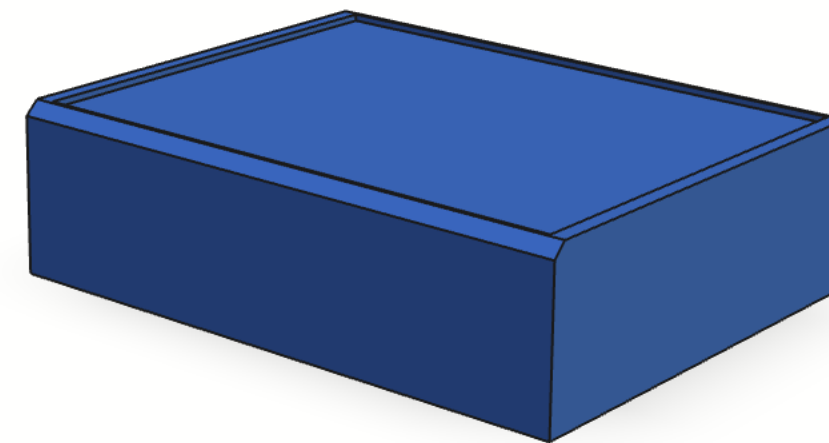
OPTION 1 - SQUARED CASE

Small Case



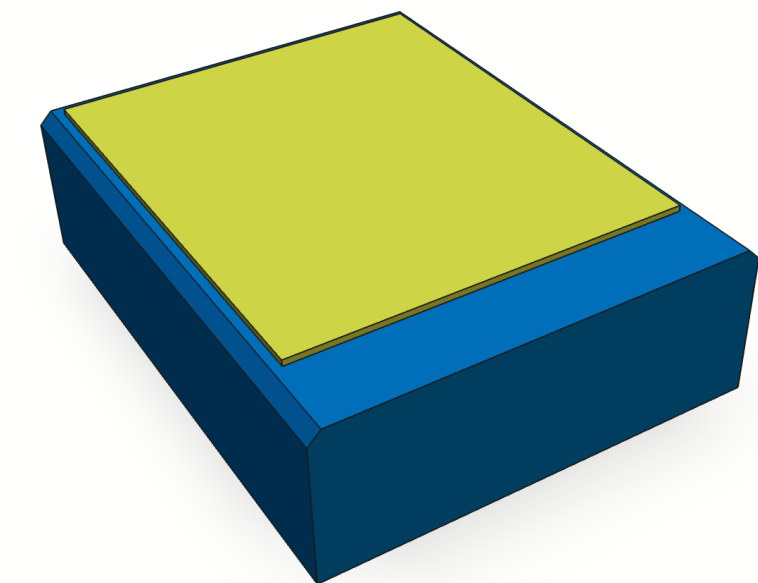
80 mm x 38 mm x 23 mm

Large Case



100 mm x 75 mm x 35 mm

Large Case with Display



115 mm x 75 mm x 35

Yellow area = TFT Display,
size 80 mm x 53 mm



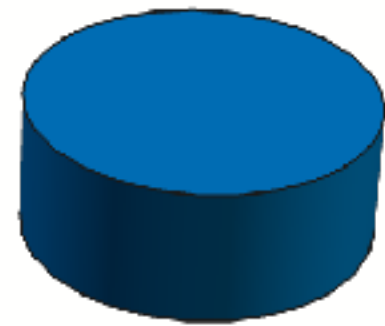




Transparent
Led light can pass
through

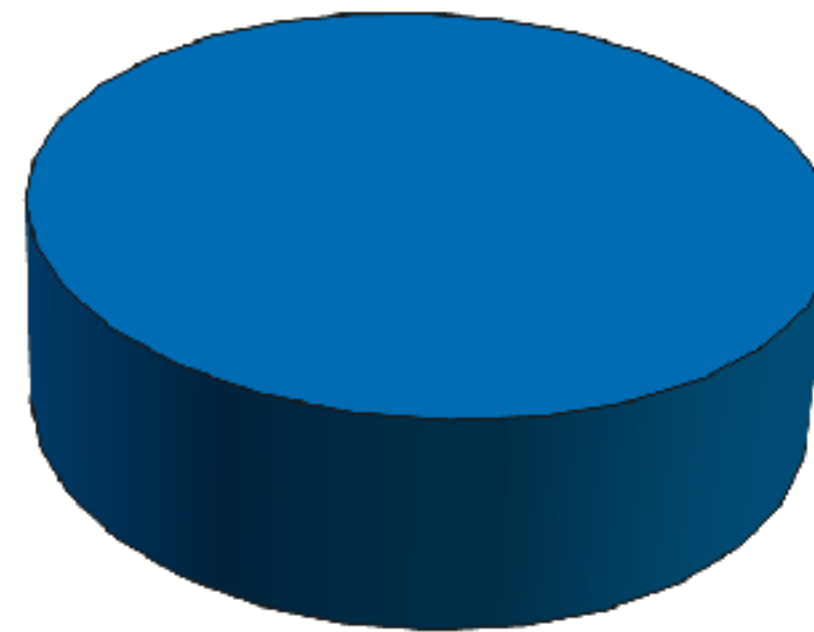
OPTION 2 - ROUND CASE

Small Case



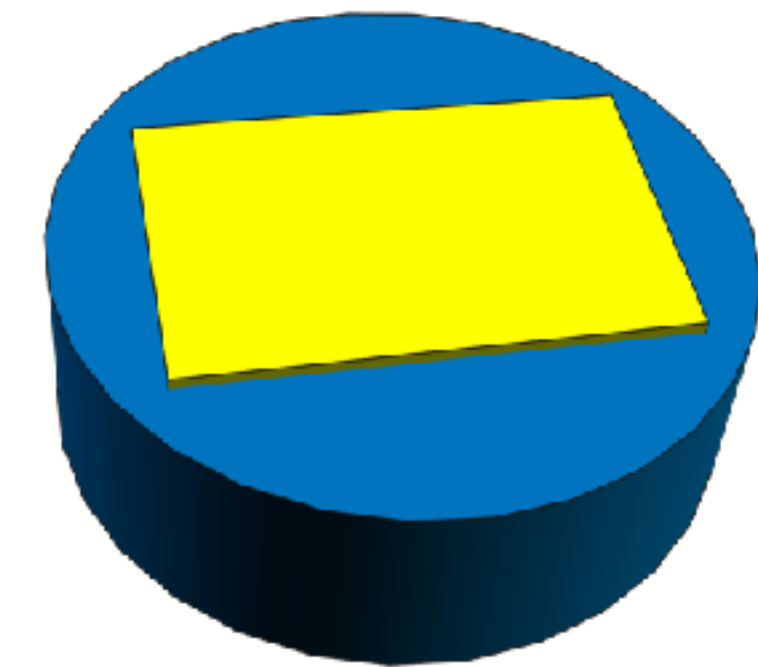
D 50 mm x 23 mm

Large Case



D 110 mm x 35 mm

Large Case with Display



D 110 mm x 35

Yellow area = TFT Display,
size 80 mm x 53 mm

