

Primary Inspiration

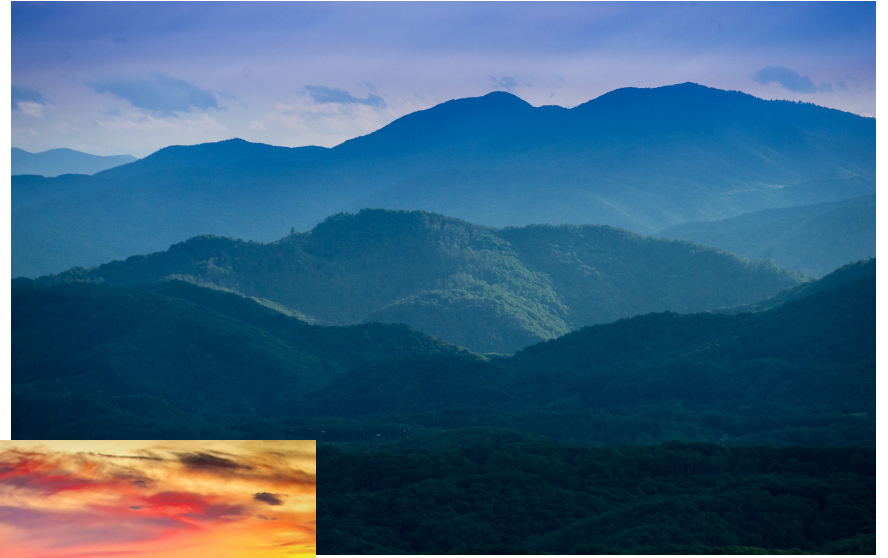
Consider the place where we live...

Think of the most romantic, quitoxic imagery of our environs.

Ridge after ridge of blue, fading as distance provides shadier hues offering a progressively muted perspective of distinctive communities nestled beyond; breathtaking rural countrysides dotted with colonies amidst fabric-like folds of the Blue Ridge mountains.

Be it homestead, or vacation home, we share the common heritage of these hills, Our rich and vibrant tapestry originates here.

Made in Western North Carolina.



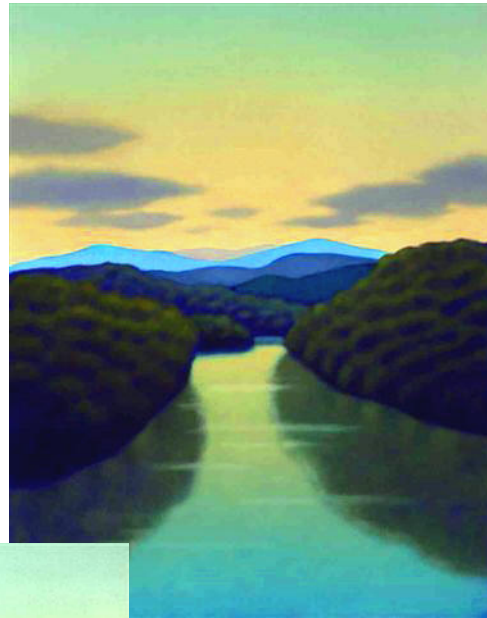
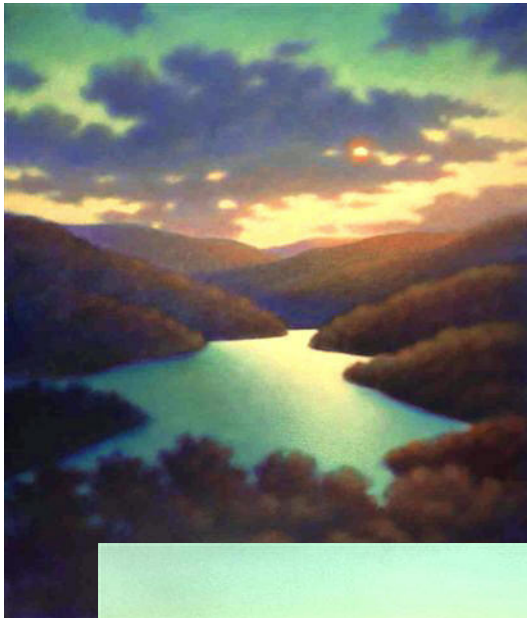
*The very reasons we
choose to call this
place "home"*



Color & Light

For the mood of our palette and aire, we were inspired by the work of regional artist Janet Green Jacobson, whose atmospheric landscapes play with color and light in such a way that an opalescence seems to radiate from the canvas.

Her palettes are full of hope with the promise of ethereal light, and distinctly evocative of Western North Carolina's magnificent landscape and color schemes based in its natural beauty.



The Metaphor

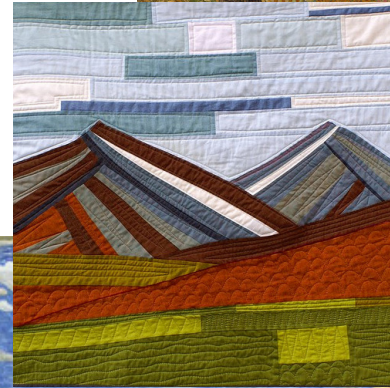
There is, perhaps, no better metaphor for the diverse, pluralistic landscape of our extended mountain society, than the quilt.

Like most cultural icons, it's centered on external expressions of internal convictions; sensitive indicators of who we are, where we come from, where we intend to go. Through these unique textile artifacts, we grasp that many and varied pieces can successfully be assembled and stitched together to create a beautiful, functional whole without any of the pieces losing their distinct characteristics; that through integrating resources, the sum of the parts is better than the individual.

Quilting is not patchwork; patch infers something is in need of mending. Quilting, rather, is an art that had its genesis in practicality and making the most of resources, involving myriad decisions, hours of time, energy, and creativity. A quilt becomes a meaningful work because meaning is poured into it.

These handmade "labors of love" speak eloquently of effort and care on the part of their makers. They invariably evoke a sudden softness of feeling, an almost sacred sense of connection to hearth and home. Quilts seem to breathe the virtue of patience and care.

The quilt affords us a literal metaphor wherein we can view the eighteen-county region which the Mission Health system blankets as distinct patches—each of its own color & stuff—planned, tacked, basted, and stitched by hand; a priceless heirloom least likely to tear in its seams, which have been joined in an inseparable unity, and made for the generations to come.



Style

Textile artist Cathy Geier's landscape quilts offer a linear-pieced construction, fittingly abstract and contemporary

