

ENERPAC®

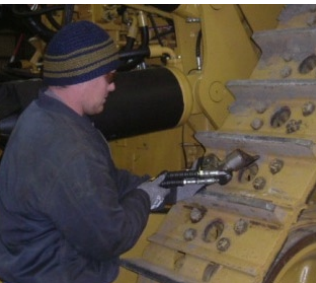
Bolting applications now made easy!



HIRE OUR TORQUE WRENCHES AND LET THEM DO ALL THE HARD WORK!

Safe. Cost Effective. Convenient.

- All Popular sizes!
- **Range!** S Series wrenches available up to 8,000 Nm (W Series 5,500 Nm).
- **Simple and Fast to Operate!** 360 degrees click-on, multi-position reaction arm.
- **Better by Design!** Super high strength uni-body construction, light weight ergonomic design for easy handling, optimised strength-to-weight ratio.
- **All Metal Components!** Nickel plated for excellent corrosion protection and improved durability. Safe for underground use.
- **Accurate!** Torque output provides dial up accuracy.



ALSO A WIDE RANGE OF HYDRAULIC JACKS & PUMPS FOR HIRE! Suit your application! Easy!



JONEL HYDRAULICS

ENERPAC®

Call Us Today To Discuss Your Hire Needs

09 274 9294

www.jonel.co.nz