

Technical Manual

Part 4: Wall & Floor Panel Design & Construction



7.1 Overview

This section outlines the many factors to be considered when designing building solutions from CSR Hebel autoclaved aerated concrete (AAC) panels, and provides design tables and charts to assist the designer. The CSR Hebel panels can be group into four basic types relating to application, these types being:

Figure 7.1: Typical Floor Panel Configuration

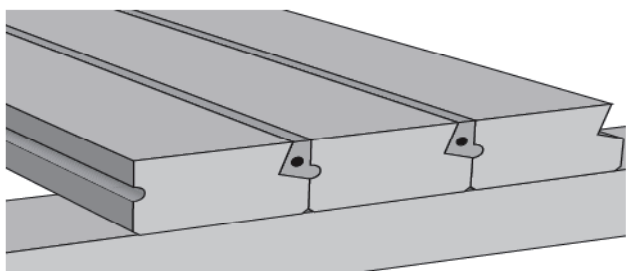


Figure 7.2: Section view - floor panels



Figure 7.3: Typical Wall Panel Configuration

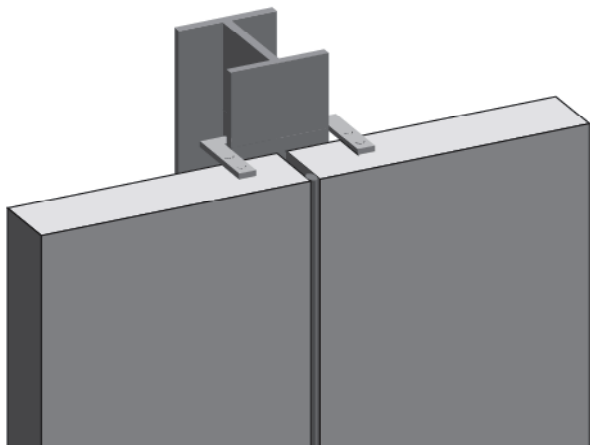
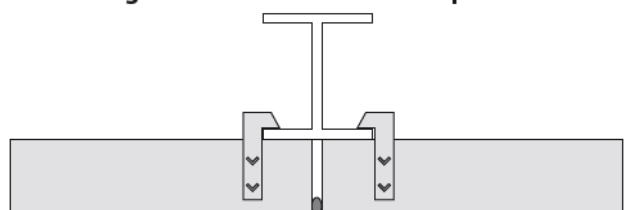


Figure 7.4: Section view - wall panels



- Floor panels;
- Wall panels;
- Ceiling panels; and
- Roof panels.

The section has been broken into four major areas as follows:

Background

- Applications
- Design Information for CSR Hebel AAC Panel
- Behaviour of a CSR Hebel Panel Systems

Design of CSR Hebel AAC Panels

- Floor Panels
- Wall Panels
- Ceiling Panels
- Roof Panels

This section includes; benefits, design and construction considerations, foundations and movement joint requirements, design procedures and design charts

On-site Considerations

- On-site Handling
- Installation

Construction Details

- Floor Panel
- Wall Panel
- Ceiling Panel
- Roof Panel

7.2 Applications

Applications

CSR Hebel panels are reinforced, and are designed for floors, walls, ceilings and roof applications in multi-residential, commercial, residential (domestic) and industrial construction.

Multi-Residential Construction

- Non-loadbearing external wall panels, generally panels are fixed to a reinforced concrete structural frame.
- Internal wall panels – party walls/ risers/ shaft walls

Commercial Construction

- Non-loadbearing external wall panels

Residential (domestic) Construction

- External loadbearing wall panels, limited to 2 storey construction,
- Roof panels
- Floor panels

Industrial Construction

- Non-loadbearing wall panels, larger panels spanning either vertically or horizontally can be successfully incorporated into industrial wall applications.
- Mezzanine floors
- Ceiling panels – fire exits

Figure 7.5: Rockdale Gardens, Rockdale, Sydney

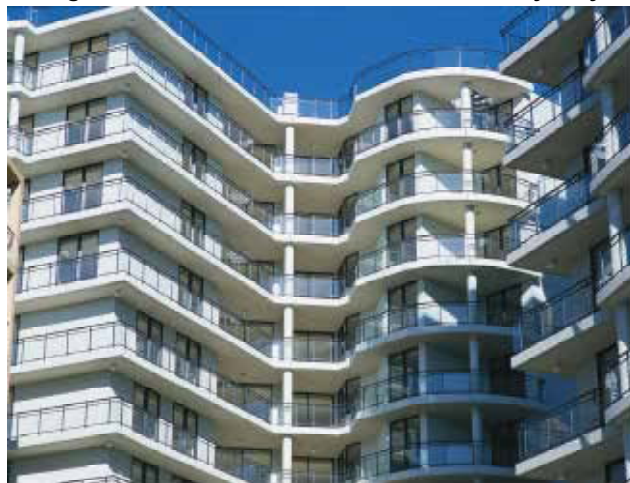
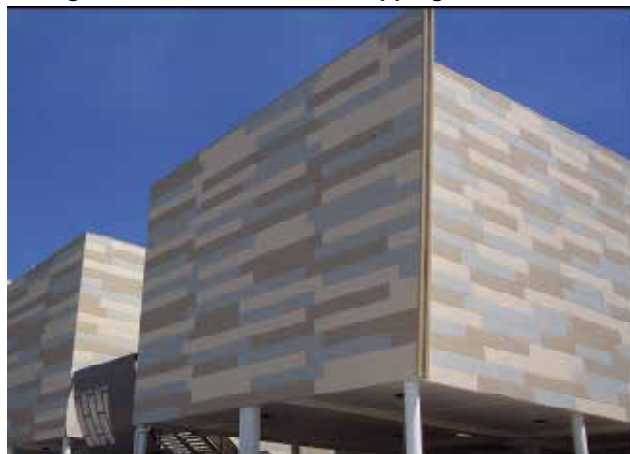


Figure 7.6: East Gardens Shopping Centre, NSW.



7.3 Design Information for CSR Hebel AAC Panel

Codes and Regulations

Design procedures for the verification of members and structures consisting of CSR Hebel autoclaved aerated concrete (AAC) panels generally follow the design principles outlined in Australian Standard AS3600-2009 – Concrete Structures, with the exception of cover requirements for durability and development length for reinforcement.

The loadings on the panel products are to be determined in accordance with the Australia Standard AS1170 “Design Actions” series of codes. These codes cover typical loadings, such as dead load, live load, wind load, earthquake load, as well as others.

Guarantee and Certification

CSR Hebel is a business of CSR Building Products Limited ABN 55 008 631 356. It is a manufacturer and supplier of CSR Hebel Autoclaved Aerated Concrete (AAC) products. Because it is a manufacturer and supplier only, CSR Hebel does not employ people qualified as Accredited or Principal Certifiers. CSR Hebel is therefore unable to provide Construction Compliance Certificates or Statements of Compliance.

CSR Building Products Limited does guarantee the products manufactured by itself and the products used in the systems described in CSR Hebel’s literature, subject to the terms and conditions of the CSR Hebel Guarantee. We do not however guarantee the components, products or services, such as installation and specialist advice, supplied by others.

CSR Hebel conducts appropriate testing of its products and systems, and sources opinions to determine performance levels.

These include structural, fire and acoustic. Testing and opinions are conducted and certified by appropriate specialists in these fields. CSR Hebel can provide copies of test results and opinions presenting the performance characteristics of its products and systems.

When using CSR Hebel products and systems in specific projects, such specialists should be consulted to ensure compliance with the Building Code of Australia and relevant Australian Standards. CSR Hebel can provide a certification for its panel products. For a specific project, an appropriate specialist can provide the certification of the relevant performance criteria of the systems and supporting structure.

Foundations

For residential application, the selection of the foundation type for use is similar to CSR Hebel blockwork and is based on AS2870, “Residential Slabs and Footings”.

This standard covers the selection of footing designs for the usual range of site conditions, i.e. soil types and slopes. Where unusual site or load conditions are encountered, advice should be obtained from a practicing Structural Engineer. It is recommended that a practicing Structural Engineer is consulted concerning the application of AS2870 to any particular building construction or site.

The approach to foundation design using AS2870 is to first classify the foundation soil, then assess the topography and select the appropriate footing design to be used. Following is a guide to this foundation design approach. The structural engineer should approve this approach before adopting.

Refer to Section 6 for further explanation of foundation design and examples.

For other applications of CSR Hebel panels, the foundation or supporting structure should be designed by the project structural engineer to satisfy the performance requirements of masonry (such as, deflection limits and stiffness).

Cracking in Masonry

As a result of the low tensile strength and negligible ductility, all forms of masonry construction behave as a brittle material and are therefore prone to cracking. Similar to other forms of masonry, careful consideration at design stage and attention to detail during construction of autoclaved aerated concrete (AAC) masonry can minimise such adverse effects.

It is important to note that the Building Code of Australia is performance based. The performance based approach acknowledges the possibility of cracking and does not consider it a defect so long as the structural resistance and other design requirements are maintained.

Cracking of masonry building elements is often of little consequence, structurally or aesthetically, depending on the wall finishes. The Office of Fair Trading, Guide to Standards and Tolerances (April 1999) identifies cracking of more than 1mm a defect in rendered surfaces. This limit is also specified in AS3700 and AS2870. Cracks up to 1mm, whilst not considered a defect in these documents, may allow water ingress in single skin masonry construction and therefore could be considered a defect under the BCA. This highlights the importance of good coating systems for CSR Hebel blockwork. Coating systems should be able to bridge minor cracking. Refer to BCA Part 3.3.4.12 Weatherproofing for single skin masonry walls.

Cracking can be due to external effects:

- Foundation and support movement.
- Deformation (shortening, shrinkage, creep, bridging control joints in structure, etc.) in adjacent materials.
- Workmanship.

The material properties of masonry units and their mortars must be taken into consideration when designing and specifying masonry blockwork to prevent or minimise cracking. AAC differs slightly from clay brick and concrete block masonry so in addition to the general behaviour of masonry, the effect of the following differences must be considered:

- Lower compression capacity.
- Lower tensile strength.
- Lower modulus of rupture.
- Lower coefficients of thermal expansion and contraction and drying shrinkage.
- Larger unit size.
- Laid in thin bed mortar which typically has higher compression capacity than the units.
- Units are autoclaved.
- Dissipates and absorbs moisture from the atmosphere with associated volume change.

Considerations for design and detailing:

- Elements of masonry blockwork must be isolated from movement.
- Control joints.
- Wall restraints.
- The compressive strength of render coatings must not exceed that of the blockwork.
- Use plasterboard linings internally.
- Use flexible coating systems that are able to bridge hairline cracks.
- Apply mesh within the render over areas of high stress.

Movement Joints (M.J.)

During the life cycle of a building, the building and the materials that it is constructed from will move. These movements are due to many factors working together or individually, such as foundation movement (shrinkage and swelling), thermal expansion and contraction, differential movements between materials, climate and soil condition. This movement, unless relieved or accommodated for, will induce stress in the materials, which may be relieved in the form of cracking. To accommodate these movements and relieve any induced stresses, which could potentially crack the wall, movement joints (vertical gaps) shall be installed. There are two categories of joints:

- Articulation joints (A.J.) are provided to relieve induced stresses due to foundation movement. The joints make the walls more flexible by breaking the wall into a series of small panels, which is especially required on reactive ground conditions (clay, peat). Differential movement between the AAC blockwork and adjacent structural elements need to be accommodated with articulation joints, such as blockwork infill between the structural frame.
- Control joints (C.J.), (one type is an expansion joint), are provided to relieve the induced stresses resulting from thermal expansion or contraction of the AAC, or differential movement between the AAC and another material or structure, such as abutting walls or columns of concrete or brickwork. Control joints can delineate coating shrinkage breaks. A joint may perform the function of either an articulation joint or control joint or both.

IMPORTANT: There are restrictions provided to the maximum length of wall:

- 6 metres maximum for continuous runs of walls.
- When measuring the 6 metre run of wall, the measurement continues around corners till the end of the wall or a movement joint.
- At the perimeter of the CSR Hebel panel wall when enclosed by the structure of the building, such as the interface with columns, walls, soffits and slabs.
- For horizontal panels, a vertical movement joint shall be provided at the ends of the panels.

Additionally, the BCA presents the following requirements for articulation joints in unreinforced masonry walls, which is applicable for AAC masonry construction:

- “b) Articulation joints must have a width not less than 10mm and be provided:
- i. in straight, continuous walls having no openings, at not more than 6m centres and not closer than the height of the wall away from corners; and
 - ii. where the height of the wall changes by more than 20% at the position of change in height; and
 - iii. where openings more than 900x900mm occur, at more than 5m centres, and positioned in line with one edge of the opening; and
 - iv. where walls change in thickness; and
 - v. at control or construction joints in the footing slabs; and
 - vi. at junctions of walls constructed of different masonry materials; and
 - vii. at deep chases (rebates) for service pipes.”

CSR Hebel recommends that movement joints be provided in AAC masonry construction for all site soil classifications.

For further information refer to the Cement Concrete and Aggregates Australia, Technical Note - Joints in Concrete Buildings through website: www.concrete.net.au

The project architect and engineer shall be responsible for determining the optimum location of movement joints, as their location is dependent on a variety of factors including most importantly the structural stability and bracing requirements of the building.

Areas to be considered, but not limited to, include:

Figure 7.7: At corners and supports.

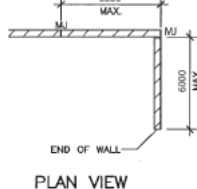


Figure 7.8: Adjacent to openings.

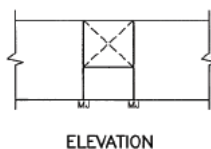


Figure 7.9: Adjacent to small openings in long walls.

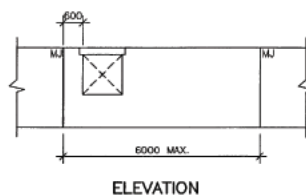


Figure 7.10: Walls built in dissimilar materials.

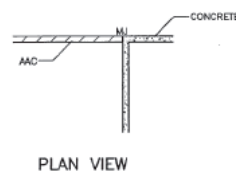


Figure 7.11: Geometrical change in wall height, i.e., single storey to two storey walls.

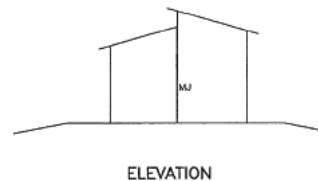


Figure 7.12: Locations or junctions of different foundation types and steps in foundations.

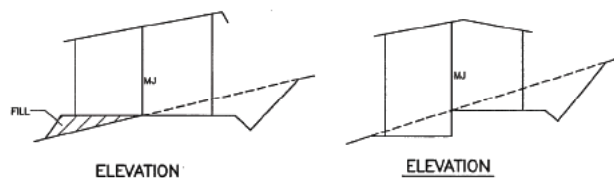
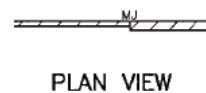


Figure 7.13: Change in wall thickness or junction of loadbearing and non-loadbearing walls.



Attention should be given to ensuring that these joints are kept free of all debris and mortar, and connectors installed in accordance with manufacturer's recommendations.

Importantly, in no circumstances should a movement joint be rendered across.

7.4 Behaviour of a CSR Hebel Panel System

CSR Hebel panels are designed as “one-way” spanning structural members. The behaviour (deflection and strength) of the panel is assessed as a function of the clear span of the panel and the design loadings to which the panel is subjected. The behaviour of the panel is predicted and checked against specified performance criterion.

The individual panels are held together with a “Ring Anchor System” to form a rigid plate or diaphragm, so that applied loadings can be directed to bracing elements and transferred to the foundations, or for the rigid plate or diaphragm to be the bracing element.

Design Method

The strength design of the CSR Hebel AAC panels has been carried out using the Transformed Section Theory, as detailed in the text book, ‘Reinforced Concrete’ by Warner, Rangan and Hall (Longman Cheshire).

The serviceability design (deflection) of the CSR Hebel AAC panels has been carried out using the Branson’s formula as detailed in the Reinforced Concrete text book. Slabs are classified “General” in accordance with AS1170.1 Clause 1.1. The serviceability factors are taken as $\Psi_s = 0.7$ and $\Psi_l = 0.4$.

For creep and shrinkage, the k_{cs} factor is taken as 1. This is because the autoclaving process cures and stabilises the AAC material. Some short-term shrinkage will occur due to drying (loss of moisture content). After the moisture content of the panel has stabilised, minor shrinkage or expansion can occur as the AAC material dissipates moisture or takes moisture in, due to variation in

atmospheric conditions.

The design charts consider two long-term deflection criteria, those being:

- Span/deflection limit ≥ 250
- Span/deflection limit ≥ 600

The deflection criteria chosen should consider type of floor coverings and walls over, etc.

For the span/deflection ≥ 250 limit, typically used for flexible floor coverings, such as carpets, timber overlays, etc.

For the span/deflection ≥ 600 limit, typically used for brittle floor coverings, such as direct stick tiles or tiles on a mortar bed, etc; or masonry walls over.

The design tables have been determined including the above mentioned assumptions, for variations to these assumptions contact CSR Hebel.

Imposed Design Actions

The imposed design actions shall be determined from AS1170 series of codes and are to be provided by the designer. They will consider:

- fire resistance levels (FRL);
- type of loading (General or Storage, etc.);
- wind loads (Permissible);
- superimposed loads;
- live loads;
- earthquake loads; and
- snow loads, or others.

For the wind load, the value will have to be the maximum after all effects, such as internal, external, and local pressure factors, etc. have been applied where applicable. This value is required as a permissible value.

Design Procedure

1. Layout of supporting members (columns, walls and beams) to optimise the thickness

of the panels and supporting structure. Note, panels are generally one-way spanning, therefore a support must be provided at each end of the panel. For example, this would include providing beams over openings (doors and windows), and secondary structural steel framing around large penetrations (roller doors, windows and floors).

2. Design Criteria. Identify the *Performance Requirements* of the *Building Solution*.

- Purpose of structure (Class and importance).
- Imposed design actions.
- Deflection criteria.
- Fire Resistance Level (FRL).
- Sound insulation performance (R_w , C_{tr} values).
- Energy Efficiency (R-Value).

3. Panel thickness. Select a panel thickness and connection type to satisfy the Design Criteria.

4. Check the proposed *Building Solution* incorporating the panel satisfies the Design Criteria.

5. Complete detailed design (weathertightness) and documentation.

Panel Specification

Importantly, the following factors are critical to the design and selection of an adequate panel:

- **Magnitude of applied loading.** The magnitude of applied loads will provide a preliminary panel thickness, but the other factors can reduce the capacity of the panel. Therefore a thicker panel maybe required.
- **Type of applied loading.** The type of loading will influence the level of live load considered for assessing the long-term deflection performance of the panel.

- **Type of floor coverings and associated deflection requirement.** The type of floor covering will influence the deflection criteria chosen. Generally, floor panels with flexible floor coverings (e.g., carpet) are designed to satisfy span/250 deflection criteria. Topping slabs and tiles will require tighter deflection criteria, like span/600 for the creep and live load deflection component.
- **Specified deflection performance.** Should a tighter deflection limit be required please advise your CSR Hebel representative, prior to final sizing of panels and preparation of a quote; see 'Structural Framing' in Design Considerations section below.
- **Fire resistance level (FRL), AAC cover to reinforcement and location of fire.** The fire rating level and magnitude of AAC cover directly affect the performance of the panel. More cover provides insulation to the reinforcement and a high fire rating level will provide time for the fire to overcome the insulation and reduce the available reinforcement capacity. When a fire is acting from above a panel, the available panel depth is reduced with an increase in the fire rating level. For more information refer to Section 5 of this publication.

Design Considerations

The following are common issues requiring consideration and resolution in the application of CSR Hebel AAC panels to individual projects:

Dimensional Layout

It is important at the preliminary design stage, that the 600mm module is adopted as the basic increment for setting out openings and penetrations in the wall. This will minimise the number of panel types on-site.

At corners, consideration should be given to starting point of the 600mm increment, as the increment starts at the corner on one wall and starts at an offset distance equal to the panel thickness plus the control joint gap (as required).

Structural Framing

The designer should consider the effects of cumulative deflections of the panels and supporting structure. Should tighter deflection criteria be required for the panels, CSR Hebel should be advised in the preliminary design stage of a project.

Additionally, the designer should conservatively assume that any connection between the structural frame and CSR Hebel panels acts as a pin. Therefore does not provide rotational restraint.

One-way

Panels are generally one-way spanning, therefore a support must be provided at each end of the panel. For example, this would include providing beams over openings (doors and windows), and secondary structural steel framing around large penetrations (roller doors, windows and floors)

Cantilevered Panels

Contact CSR Hebel for the design of panels with a cantilever. Note, the design check is restricted to simple loadings. CSR Hebel recommends a secondary framing system to support complex or usual loadings on the cantilever. The design of this alternate support system would be provided by the project's designer (structural engineer).

Foundations

For residential application, the selection of the foundation type for use is similar to CSR Hebel blockwork and is based on AS2870, "Residential Slabs and Footings" (refer to Section 7.3).

For other applications of CSR Hebel panels, the foundation or supporting structure should be designed by the project structural engineer to satisfy the performance requirements of masonry (such as, deflection limits and stiffness).

Movement Joints

Movement joints (M.J.) are required to minimise and control cracking in a wall by breaking the wall into separate masonry panels with points of weakness (articulation joints (A.J.) and control joints (C.J.)), which locate and allow movement. Joints should be included in all walls, both internal and external. (refer to Section 7.3).

Concentrated Loads

The effect of concentrated loads acting at mid-span of floor panels, such as masonry walls perpendicular to the panels, has not been allowed for in the design tables in this section. Generally, the panel thickness will increase, and confirmation of panel thickness should be obtained from your CSR Hebel representative.

For large concentrated loads, such as steel beams or girder trusses, supported on CSR Hebel walls these are to be approved by the project engineer.

Weathertightness

Only coating manufacturer recommended coating systems should be used on CSR Hebel AAC panels. Ensure coatings are suitable for use on CSR Hebel AAC, i.e., coating manufacturer's specification. Refer to the CSR Hebel Technical Manual Part 9 for further information.

Sealants and flashings/cappings (metal or proprietary product) to be detailed by the designer.

Sealants

The primary objective of the sealant is provide a flexible, durable barrier to water

ingress. Sealants in the CSR Hebel walls are used in movement joints and around openings, such as vertical control joints, the deflection gap between the top of the panel and the concrete soffit, and windows.

To accommodate the required movements, a sealant should be installed in accordance with manufacturer's specifications. Typically a backing rod is used to control the depth of sealant and ensure the sealant is bonded on two sides only. Note, the surface may require some preparation depending upon the type of sealant.

Construction Considerations

The following are common issues requiring consideration and resolution in the construction of CSR Hebel AAC panels to individual projects:

Approach

All CSR Hebel panels are manufactured with reinforcement, to ensure structural adequacy during installation and the design life of the panel. Unlike reinforced concrete, the reinforcement in the CSR Hebel panels is anchored with transverse bars welded to the longitudinal reinforcement. The strength of panels can be detrimentally affected by:

- size and distribution of penetrations;
- size of notching;
- on-site cutting; and
- insufficient bearing lengths.

Penetrations

Small service penetrations through the panel should allow for differential movement between the panel and the service.

All penetrations are a potential source for water ingress and should be sealed with an approved flexible sealant.

Notching

All penetrations and notches should be clearly marked on the "Layout" drawings. The client of CSR Hebel shall ensure all penetrations are clearly marked. Penetrations and notches remove reinforcement from the panel and reduce the strength of the panel. This can be accounted for in design with the addition of reinforcement, if indicated on the drawings. All penetrations should be in a line parallel with the long edge of the panel, to minimise the amount of reinforcement removed from a panel.

On-site Cutting of Panels

Panels which are clearly marked as "cuttable" shall be cut on-site, as cutting may remove necessary transverse bars from the panel. The panel may be rendered inadequate and will require replacing at the client's expense. All exposed reinforcement shall be painted with a liberal coating of CSR Hebel corrosion protection agent. To maintain fire resistance performance the ends of the panel shall be treated as specified in Section 5.

Bearing Length

CSR Hebel panels can be laid on any masonry or concrete wall or supporting structure. The load bearing wall must be levelled if necessary with mortar to achieve a true surface.

Sealant Installation

Note, the external sealant in the control joints adjacent to windows should be extended to the inside face of the wall, beyond the sealant line of the windows. No gap should exist between both sealants. This sealant configuration is recommended at similar detailing issues.

Bond Breaker Layer

A necessary part of a CSR Hebel AAC panel wall is the bond breaker layer, which is installed at the base of the wall between

the concrete foundation and the wall, and for floors between the CSR Hebel floor panels and a support other than CSR Hebel AAC. This layer accommodates the different shrinkage rates and differential movement/displacement of the CSR Hebel AAC panels and concrete by allowing localised slip to occur, which helps relieve any build up of stress. Typically, a damp-proof course (DPC) material is used with CSR Hebel AAC block walls to provide a slip plane, as well as prevent rising damp in the wall.

When a slip joint is required between CSR Hebel floor panels and non-CSR Hebel products. Two layers of greased galvanised steel is an acceptable slip joint system.

Damp Proof Course

A damp proof course (DPC) membrane is recommended at the base of CSR Hebel panel walls, to prevent damp rising in masonry.

Movement Joints

Attention should be given to ensuring that these joints are kept free of all debris and mortar, and connectors installed in accordance with manufacturer's recommendations.

Importantly, in no circumstances should a movement joint be rendered across.

Ensure specified backing rod and sealant are installed in accordance with manufacturer's recommendations.

Hebel Adhesive

The Hebel Adhesive should be prepared in accordance with the instructions on the packaging. Importantly, the adhesive should not be re-tempered as this will have a detrimental affect on the bond strength.

Hebel HighBuild™ and Hebel

SkimCoat™ Render

The Hebel HighBuild™ should be prepared in accordance with the instructions on the packaging. Importantly, the render should not be re-tempered as this will reduce the strength and affect the qualities of the render.

Chasing

Refer to Sections 5.12 and 5.14 of Fire Design in this publication.

Steel Beams

When steel beams are used in conjunction with construction with CSR Hebel products, the end bearing should be carefully checked. The principles of AS3700 can be adopted for the bearing under a point load, however as a guide for design, a bearing stress limit of 0.5MPa is conservative for local crushing under the beam. If high loads are involved bearing plates and steel SHS sections can be used. **These should be designed by a practicing structural engineer.**

7.5 Floor Panel Design

Introduction

Light-weight floor panels were developed to provide a lightweight flooring system with excellent fire resistance properties and acoustic insulation performance.

The CSR Hebel floor panels are installed very quickly with a “Ring Anchor System” or concrete topping slab, which results in a monolithic floor plate. The CSR Hebel floor panels are available in a range of thicknesses, and manufactured to length and width.

For a guide to selection of the appropriate system and panel size refer to Design Procedure in Section 7.4 of this publication.

The CSR Hebel floor panel system provides many benefits to the designer, builder and owner.

Benefits

The benefits of using a CSR Hebel floor panel system include:

- **Factory Manufacture**, panels manufactured to low tolerances.
- **No Propping**, low impedance of other trades.
- **Safe Working Platform**, un-grouted panels provide a flat work surface.
- **Immediate Loading Platform**, initial un-grouted panels can be used as a temporary loading platform, or floor can except loading 4 days after grouting.
- **Rapid Installation**, typical placement rates of 150m²/day can be achieved.
- **Delivery to Suit Client's Programme**, minimal storage area required on-site.
- **Excellent Fire Resistance Properties**, AAC acts as an excellent insulator of heat from a fire.
- **Good Sound Insulation Performance**,

floor systems provide good resistance to sound and impact noise transfer.

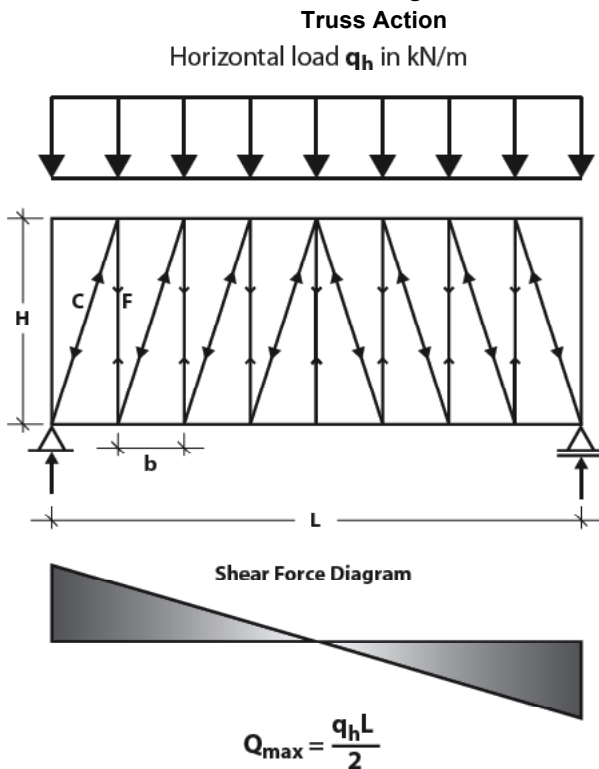
- **Excellent Thermal Qualities**, the inherent thermal characteristics of AAC result in a higher level of comfort and cost savings in maintaining the comfortable environment within the building.
- **Environmentally Friendly**, AAC manufacture has a minimum impact on environment.
- **Less Waste**, minimal site cutting. Panels custom made to required height.
- **Totally Dry Trade**, minimal quantities of water required on-site.
- **Modular Design** results in speedy construction.
- **Technical Support**, our staff can assist with systems advice and coordination of the preparation of floor panel “Layout drawings”.
- **Single Trade**, speedy delivery as one trade can install the complete system, especially when coupled with Hebel PowerWall 501, PowerWall 530 and PowerWall 550.
- **Installed Panels**, not affected by wet weather.
- **Light-weight AAC**, lower overall structure loads results in associated dollar savings in the foundation materials.

Diaphragm Action Design for CSR Hebel Floor Panel Systems

Contact CSR Hebel for a “design method” guidelines for the assessment of diaphragm behaviour of the CSR Hebel panel systems.

An introduction to the design method is presented here. Basically, the method considers the diaphragm a long, deep beam supported by the bracing walls. There are to loading conditions that have to be assessed:

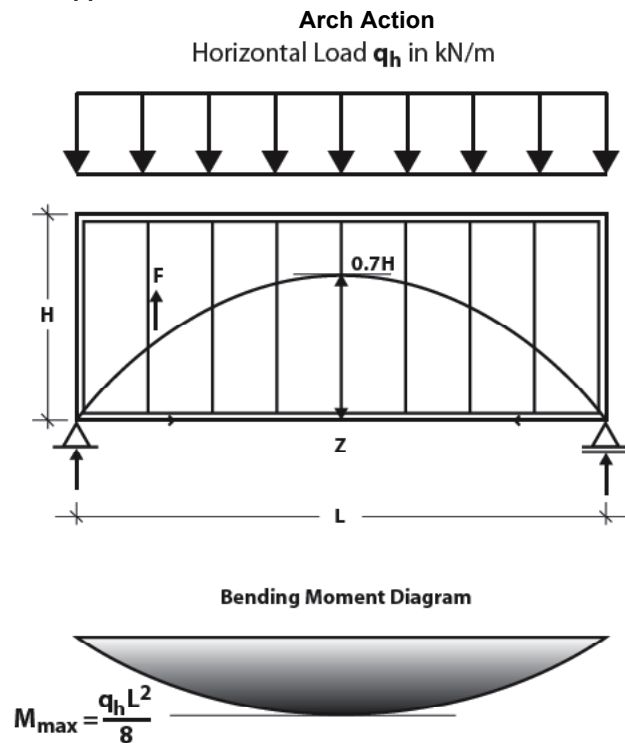
Figure 7.14: Horizontal Loads Applied Parallel to Panels



Tensile force for joint reinforcement bar (F) in first joint

$$F = Q_{\max} - q_h \times b$$

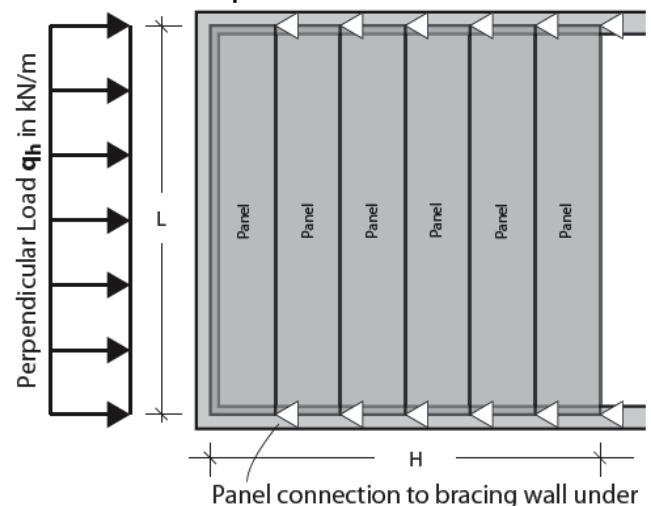
- For loadings that are parallel with the spanning of the panels, the deep beam is analysed as a "Truss Action" and "Arch Action" (refer Figure 7.14). The truss consists of tension forces (F) being carried by the joint reinforcement located in the notch formed by the panel profiles and compression forces (C) being carried as diagonal struts across the panel. The arch is assumed to have a compression force at 0.7 of the length of the panel (H). Using bending theory for a simple span and the distance between the compression and tension forces (Z), these forces can be determined. The tension force is carried by the "Ring Anchor" reinforcement around the perimeter of the diaphragm.



Required tensile force (Z) for ring anchor reinforcement

$$Z = \frac{M_{\max}}{0.7H}$$

Figure 7.15: Horizontal Loads Applied Perpendicular to Panels



- For loadings that are perpendicular to the span of the panels, the individual panels carry the loadings (refer Figure 7.15). Provided the "Ring Anchor" is installed around the perimeter of the group of panels forming the

diaphragm, then the loading can be shared equally across the panels in the group. That is, 5 panels would have to resist 20% of the loading. Contact CSR Hebel for a check of the panel capacity.

An explanation of the “Ring Anchor” system is detailed below.

Generally, where the floor panel system provides diaphragm action and sheds its loads to the support structure. The designer must ensure that these loads are adequately transferred. Methods include; friction, dowels, cleats (structural steel framed buildings), etc.

“Ring Anchor” System

Typically, the “Ring Anchor System” consists of N12 reinforcement bars located in the DP profiled notch at the joint between consecutive panels and continuous around the perimeter of the group of CSR Hebel floor panels. The reinforcement bars are anchored at corners and the intersection of the DP profile and perimeter. The minimum lap length of the reinforcement is 400mm. Reinforcement should not be lapped over internal supports. The lap should be located at mid-span of the panels.

After the panels are laid, reinforcing bars (N12) are placed between the panels in the recess and around the perimeter of the floor to form the “Ring Anchor System” in accordance with the design specifications. The bars should be supported on chairs or equivalent to allow proper placing of grout. Panels may require propping before placing the “Ring Anchor System” when subject to temporary dead load variations.

The reinforcement is to be encased in a weak mix concrete grout. The joints and perimeter sections should be wetted, filled with minimum characteristic compressive strength concrete of 15MPa (maximum aggregate size 6mm and maximum slump 200mm). The grout should be compacted (“rodded”) to ensure the grout encases the

reinforcement and is “worked” into the groove of the DP profile. The grout cover that must be given to the reinforcement shall be in accordance with AS3600 “Concrete Structures”. The concrete should completely cover the reinforcement with 25mm minimum cover.

Where a higher strength connection is required, the designer should recommend an alternative such as, welded splices or threaded coupling. Note these connections are to be performed in accordance with relevant codes and guidelines, and manufacturer’s literature.

Design Considerations- FLOORS

The following are common issues requiring consideration and resolution in the application of AAC masonry to individual projects:

Structural Bracing of the Framework

Provide structural bracing to the system, where the floor panel system is not acting as the horizontal bracing element.

Bearing Length

For monolithic loads, such as suspended floor slabs and roof framing, ensure an adequate bearing width, and project engineer to consider the effects of eccentric loading.

Cantilevered Panels

200mm thick panel for 1200mm maximum cantilever and 150mm thick for a 900mm maximum cantilever. These panel thicknesses are based on conventional residential loadings (Dead Load = 0.5kPa, Live Load = 3.0kPa) and no point loading at the end of the cantilever. Note, concentrated loadings along the length of the cantilever are not recommended and secondary framing should be provided to

carry these loadings. Note, there is a limit on the minimum length of the panel back-span, of greater than twice the length of the cantilever.

Construction Tolerances

A 40mm minimum gap should be allowed between the ends of abutting panels. This will provide access for grout and the cleat system on steel framed structures. The grout will ensure the panels are locked in, which stiffens the floor.

If these tolerances are not considered, the speed of installation will decrease as the preparation work (notching for cleat, trimming panel) will increase.

Flange Width

Ensure support arrangements provide the required minimum end bearing lengths. Note, some supports may require a spreader plate.

External Application

Galvanised reinforcement must be used for panels in external applications.

Construction Considerations - FLOORS

The following are common issues requiring consideration and resolution in the application of AAC masonry to individual projects:

Construction Bracing of the Framework

For steel framed construction, temporary bracing may be required during the installation to prevent the unsafe movement of the support framework. Excessive movement could result in the panels losing their bearing support, before the panels and “Ring Anchor” system are installed.

“Ring Anchor System”

CSR Hebel recommends 3 days of curing for the “Ring Anchor System”, to ensure the grout has sufficient strength to carry construction loads (2kPa).

Ensure reinforcement is chaired to provide required grout cover to the reinforcement.

Workmanship

Ensure the panel are level before grouting and the grout is compacted around the reinforcement, so that the finish of the floor covering is not affected.

Panel Installation

Prior to laying floor panels the top of the supporting masonry should be finished to give a level, unbroken surface. Slabs should be lifted into position one by one. It is important that the first panel is in perfect alignment so that other slabs do not need adjustment later in the installation.

Care should be taken to anchor the slabs so that they are not displaced by wind forces before the mortar has set.

Chasing

The effect of chasing has to be considered, as it can detrimentally affect the structural capacity of the floor and reduce the performance under fire loading. Refer to Section 5 in the CSR Hebel Technical Manual.

Fire Performance

The background to determining the fire performance characteristics of CSR Hebel AAC panels is outlined in Section 5 of this publication.

Floor Panel Design Tables

Table 7.1: Standard Floor Panels

- The following tables are for guidance purposes only.
- Table 7.1 present the clear span capacity of the floor panel products, for a range of applied load and fire resistance level (FRL) rating combinations.
- Ideally, the involvement of CSR Hebel early in the project will allow the panel geometry and size to be confirmed before project documentation.

| Floor Panel Thickness (mm) | FRL (minutes) | Maximum Clear Span (m) | | | | | | | | | | | |
|----------------------------|---------------|------------------------|------|------|------|------|------|------|------|------|------|------|------|
| | | Live Load (kPa) | | | | | | | | | | | |
| | | 1.00 | | 1.50 | | 2.00 | | | | 3.00 | | 5.00 | |
| | | Dead Load (kPa) | | | | | | | | | | | |
| | | 0.00 | 0.00 | 0.50 | 1.00 | 1.20 | 0.00 | 0.50 | 1.00 | 1.20 | 1.00 | 1.20 | 0.00 |
| | | Span/Deflection | | | | | | | | | | | |
| | | 250 | 250 | 250 | 250 | 600 | 250 | 250 | 250 | 600 | 250 | 250 | 250 |
| 150 | 90 | 4.30 | 4.05 | 3.75 | 3.50 | 2.60 | 3.85 | 3.60 | 3.40 | 2.50 | 3.20 | 3.15 | 3.15 |
| 175 | | 4.80 | 4.55 | 4.25 | 3.95 | 3.00 | 4.55 | 4.10 | 3.85 | 2.90 | 3.65 | 3.60 | 3.60 |
| 200 | | 5.25 | 5.00 | 4.65 | 4.40 | 3.30 | 4.80 | 4.50 | 4.30 | 3.20 | 4.05 | 4.00 | 4.00 |
| 225 | | 5.70 | 5.45 | 5.10 | 4.80 | 3.60 | 5.20 | 4.90 | 4.70 | 3.50 | 4.45 | 4.40 | 4.40 |
| 250 | | 5.80 | 5.80 | 5.45 | 5.20 | 3.90 | 5.60 | 5.30 | 5.05 | 3.80 | 4.80 | 4.75 | 4.75 |
| 200 | 120 | 4.75 | 4.60 | 4.30 | 4.10 | 3.00 | 4.40 | 4.20 | 4.00 | 3.00 | 3.80 | 3.70 | 3.60 |
| 225 | | 5.30 | 5.10 | 4.80 | 4.50 | 3.40 | 4.90 | 4.60 | 4.40 | 3.20 | 4.20 | 4.10 | 4.05 |
| 250 | | 5.70 | 5.50 | 5.20 | 4.90 | 3.70 | 5.30 | 5.00 | 4.80 | 3.60 | 4.60 | 4.50 | 4.45 |
| 200 | 180 | 4.50 | 4.20 | 4.00 | 3.70 | 2.90 | 4.10 | 3.80 | 3.60 | 2.80 | 3.45 | 3.40 | 3.00 |
| 225 | | 5.00 | 4.80 | 4.50 | 4.30 | 3.20 | 4.70 | 4.40 | 4.20 | 3.20 | 4.00 | 3.90 | 3.90 |
| 250 | | 5.50 | 5.30 | 5.00 | 4.70 | 3.55 | 5.10 | 4.80 | 4.60 | 3.50 | 4.40 | 4.30 | 4.30 |

Note: The above table has been based on the following

CSIRO TEST REPORT FSH 0150 (1991)

CSIRO TEST REPORT FSH 0291 (1994)

DIN 4102 & EN 12602

CSIRO OPINION No 2808 (2010)

Reinforcement content and cover requirements specified by CSR Panel Systems base don FSH 0150 and DIN 4102

7.6 Wall Panel Design

Introduction

CSR Hebel wall panels installed horizontally or vertically are suitable for commercial/industrial and multi-residential construction due to their modular layout, prefabricated methods and fast installation.

The CSR Hebel wall panel systems provide many benefits to the designer, builder and owner.

Benefits

The many advantages of using a CSR Hebel wall panel building solutions wall are listed:

- **Modular Design** results in speedy construction and cost savings.
- **Lightweight**, lighter loads on the structure than conventional masonry.
- **Narrow Wall**, thinner overall wall widths.
- **Less Vertical Crane Movements**, associated with less waste and large face areas of wall contained in each lift.
- **No requirement for rigid scaffolding**, as panels are lightweight and installed from the internal floor space.
- **Less Waste**, minimal site cutting. Panels manufactured to specified lengths.
- **Dry Trade**, minimal quantities of water required on-site.
- **Technical Support**, our staff can assist with systems advice.
- **Single Trade**, speedy delivery as one trade

can install the complete system, especially when coupled with Hebel PowerWall 501 and PowerWall 530.

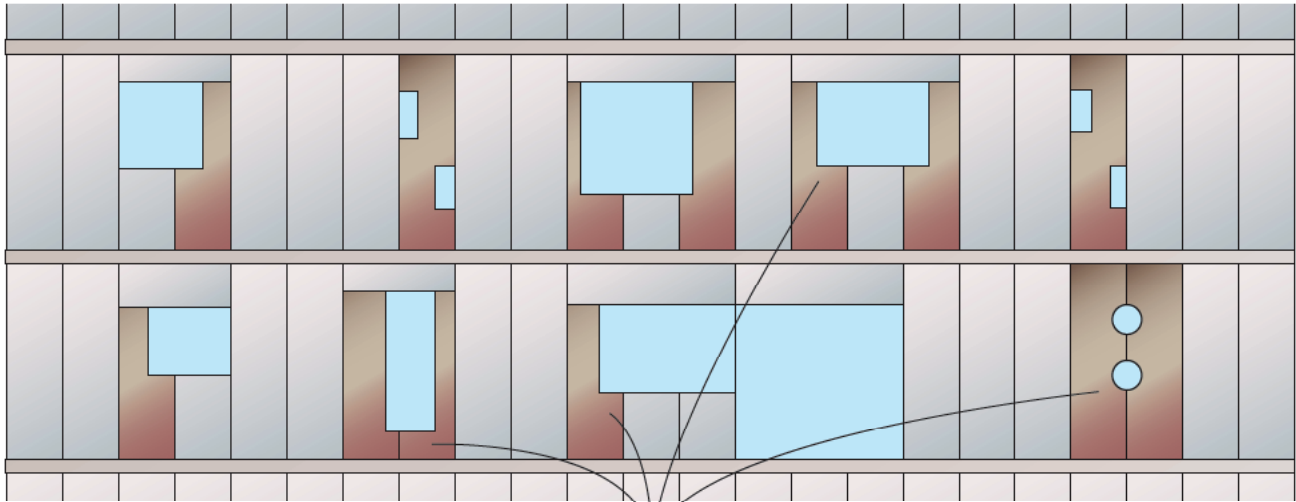
- **Installed Panels**, not affected by wet weather.
- **Excellent Thermal Qualities**, the excellent thermal properties of AAC result in a higher level of comfort levels and cost savings in maintaining the comfortable environment within the building.
- **Ecologically Responsible**, AAC production uses less raw materials and energy in the production process than other masonry products, and creates minimal wastes.
- **Embodied Energy**, refers to energy spent extracting raw materials, and in production, delivery and construction. CSR Hebel rates very well compared to other building materials.

Openings and Penetrations

At openings (windows), we recommend a 600mm width panel be installed adjacent to the opening. For large openings, it may be necessary to provide additional structural steel to support the loads shed from the opening. Alternatively, the panel adjacent to the opening could be thickened (confirm with CSR Hebel representative).

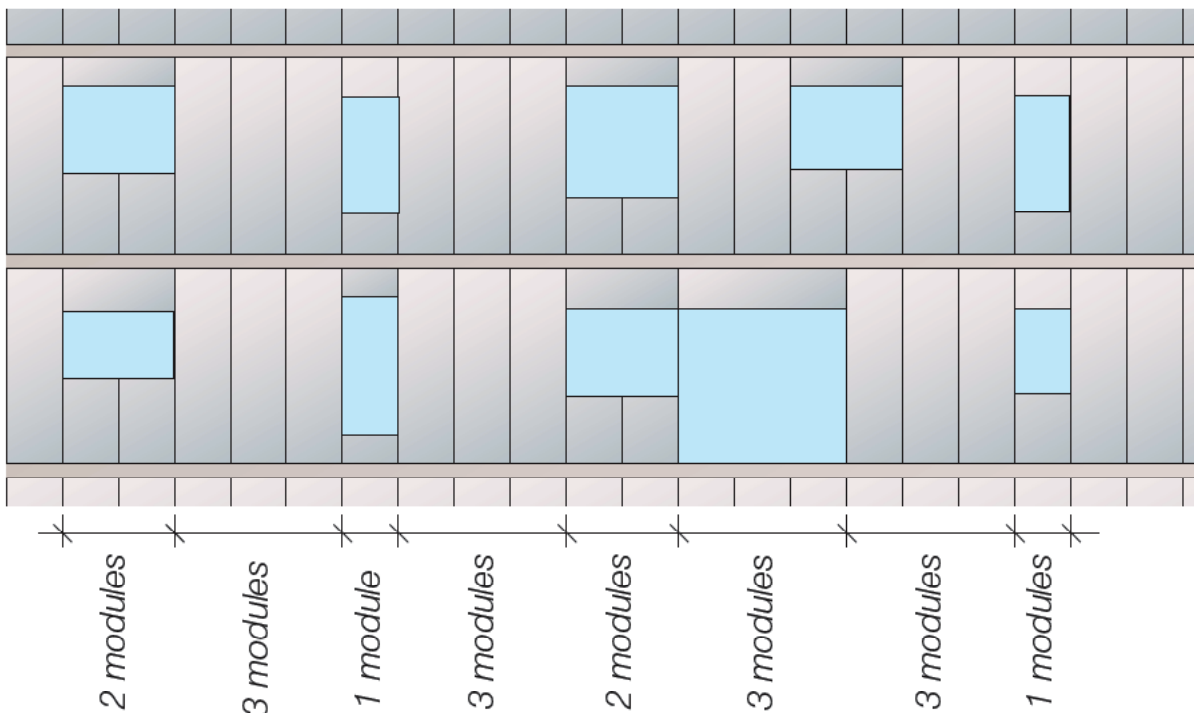
Planning the panel layout with consideration with special attention to the locations of penetrations can significantly reduce the amount of on-site cutting. A 'Before' and 'After' layout of vertical panels with various penetrations are shown below.

Figure 7.16: Recommended Panel Layouts
'Before' panel layout - Elevation



Poor panel layout results in complex on-site cutting of panels

'After' panel layout - Elevation



Good panel layout makes best use of 'module' size and location for all openings to reduce on-site panel cutting

Design Considerations – WALLS

The following are common issues requiring consideration and resolution in the application of AAC masonry to individual projects:

Structural Bracing of the Framework

Provide structural bracing to the system, where the floor panel system is not acting as the horizontal bracing element.

Cantilevered Panels

As a guide:

- 200mm thick panel for 1200mm maximum cantilever.
- 150mm thick for a 900mm maximum cantilever.

These panel thicknesses are based on conventional residential loadings and no point loading at the end of the cantilever. Note, concentrated loadings along the length of the cantilever are not recommended and secondary framing should be provided to carry these loadings. Note, there is a limit on the minimum length of the panel back-span, of greater than twice the length of the cantilever.

Construction Tolerances

A 20mm minimum gap should be allowed between the ends of abutting panels. This will provide sufficient width for the backing rod and sealant system.

Flange Width

Ensure support arrangements provide the required minimum end bearing lengths.

Penetrations

Penetrations and openings may require additional structural steelwork to support the infill, such as window framing.

Construction Considerations – WALLS

The following are common issues requiring consideration and resolution in the application of AAC masonry to individual projects:

Penetration Restrictions

Generally, penetrations are required to pass services, such as fire sprinklers, power switches, or air conditioning ductwork. During the construction stage, penetrations may be required for scaffolding supports and bracing. These penetrations will reduce the strength of the wall panel and fixing.

It is important that all penetration requirements are shown on the 'Layout' drawings. As a guide, the maximum penetration or rebate width shall be the minimum of 100mm or 20 percent of the panel's width, panel width shall be greater than 400mm and one rebate per panel.

Workmanship

Ensure that all joints are completely filled and are approximately 2-3mm thick.

Chasing

The effect of chasing has to be considered, as it can detrimentally affect the structural capacity of the wall and reduce the performance under fire loading. Refer to Section 5 of this publication.

Wall Panel Design Tables

Table 7.2 presents the clear span capacity of the panel for the applied Permissible Wind Load. Note, these maximum span values are for the panel, the capacity of the connection could govern the maximum span value. Should the connection be a limitation, a reduction in panel length and/or width can be considered a possible solution. Ideally, the involvement of CSR Hebel early in the project will allow the panel geometry and size to be confirmed before project documentation.

Table 7.2: Spans for Wall Panels

- The following tables are for guidance purposes only.
- Ideally, the involvement of CSR Hebel early in the project will allow the panel geometry and size to be confirmed before project documentation.

| Thickness (mm) | Recommended Maximum Clear Span (m) | | | | | | | | | |
|----------------|------------------------------------|------|------|------|------|------|------|------|------|------|
| | Permissible Wind Load (kPa) | | | | | | | | | |
| | 0.75 | 1.00 | 1.25 | 1.50 | 1.75 | 2.00 | 2.25 | 2.50 | 2.75 | 3.00 |
| 100* | 3.00 | 3.00 | 3.00 | 3.00 | 2.85 | 2.70 | 2.55 | 2.40 | 2.30 | 2.20 |
| 125 | 4.50 | 4.50 | 4.50 | 4.25 | 4.00 | 3.85 | 3.70 | 3.55 | 3.45 | 3.30 |
| 150 | 5.85 | 5.85 | 5.85 | 5.45 | 5.20 | 4.95 | 4.75 | 4.60 | 4.45 | 4.30 |
| 175 | 5.85 | 5.85 | 5.85 | 5.85 | 5.85 | 5.85 | 5.75 | 5.55 | 5.35 | 5.20 |
| 200 | 5.85 | 5.85 | 5.85 | 5.85 | 5.85 | 5.85 | 5.85 | 5.85 | 5.85 | 5.85 |

Notes: Table values allow for a deflection of L/180. Spans may be limited by connection capacity.

* Tongue and groove profile for this thickness is currently not available. Panels with a thickness of 125mm and greater have a fire resistance level (FRL) of 240/240/240.

7.9 On-site Handling

The following are common issues requiring consideration and resolution in the application of AAC masonry to individual projects:

- Health and Safety
- Manual Handling
- Unloading Block Pallets
- Storage
- Personal Protective Equipment, PPE
- Cutting
- Installation Procedures
- Damaged Panels
- Mortars and Adhesives
- Waterproof Membrane

Health and Safety

CSR Hebel products are cement-based, which may irritate the skin, resulting in itching and occasionally a red rash. The wearing of appropriate Personal Protective Equipment (PPE), such as gloves and suitable clothing to reduce abrasion and irritation of the skin is recommended when handling CSR Hebel products.

Approved respirators (AS/NZS1715 and AS/NZ1716) and eye protection (AS1336) should be worn at all times when cutting and chasing. Refer to the appropriate CSR Hebel Material Safety Data Sheet (MSDS), and Safe Work Method Statement (SWMS).

Manual Handling

CSR Hebel recommends using a trolley or other mechanical apparatus to move the panels around the work site. Manual handling where people physically move a panel, should be kept to a minimum, with the weight being supported by an individual kept as small as possible. Any concerns regarding the weight to be handled should

be discussed with the panel installation contractor.

To minimise the possibility of manual handling injuries, CSR Hebel suggests the following:

1. Use mechanical aids, such as trolleys, forklifts, cranes and levers, or team lifting to move panels.
2. Keep the work place clean to reduce the risk of slips, trips and falls, which can cause injury.
3. Plan the sequence of installation to minimise panel movements and avoid awkward lifts.
4. Train employees in good lifting techniques to minimise the risk of injury.

Unloading Panel Bundles

Panel Bundles shall be unloaded and moved with only approved lifting devices. Before use, the lifting devices (block cage) should be checked for the required lifting tags. The pallets should be unloaded as close as possible to the intended installation area. This will increase work efficiency and minimise the need for secondary handling.

Note: Secondary handling increases the risk of panel damage. The repair of damage sustained during lifting and moving is the responsibility of the lifter. When damage is excessive, the product should be replaced.

Storage

All materials must be kept dry and preferably stored undercover. Care should be taken to avoid sagging or damage to ends, edges and surfaces.

All CSR Hebel panel and lintel products must be stacked on edge and properly supported off the ground, on a level platform. Panel bundles can be stacked two high. The project engineer should be consulted as to the adequacy of the

If outside, CSR Hebel wall panels must be stored off the ground and protected from the weather. Only single bundles positioned on the ground can be opened. To provide a level surface, we recommend placing temporary joists beneath the supporting cleats.

Cutting

The use of power tools may cause dust, which contains respirable crystalline silica, with the potential to cause bronchitis, silicosis and lung cancer after repeated and prolonged exposure. When using power or hand tools, on CSR Hebel products, wear a P1 or P2 respirator and eye protection. When cutting, routing or chasing CSR Hebel products with power tools, use dust extraction equipment and wear hearing protection. Refer to CSR Hebel MSDS sheets and sample SWMS. For further information, contact CSR Hebel or visit the website.

Reinforcement exposed during cutting is to be coated with a liberal application of CSR Hebel corrosion protection paint. (Refer to Section 5 of this publication).

Packers

The packer should be non-compressible, non-corrosive and stable (no deterioration over time). The installer should provide various packer thicknesses to ensure the panel can be installed to a vertical tolerance of $\pm 2\text{mm}$, or as per project specification.

Installation Procedures

CSR promotes and advocates a safety conscious work place at all times. To assist builders and contractors to maintain their safety standards, CSR Hebel has produced guidelines for the installation and handling of their products.

These guidelines can be found in the following technical bulletins (see Appendix G):

- CSR Hebel PowerPanel™ Installation & Handling Guidelines, No HTB791; and
- CSR Hebel Wall Panel Installation & Handling Guidelines, No HTB799.

Damaged Panels

CSR Hebel should be notified immediately of any block damage or cracking at occurs during the handling of the blocks. This damage may result in the block being structurally inadequate, and should be replaced.

Mortars and Adhesives

The CSR Hebel bagged mortar and adhesive should be prepared in accordance with instructions on the packaging.

Waterproof Membrane

Waterproofing membranes shall be nominated by the designer or specifier, and installed in accordance with manufacturer's recommendations.

7.10 Installation

Panels

Panels should not be cut on site unless they are identified as “cutable”, either on the panel or on the “layout” drawing. They should be ordered from the factory at the desired length. This is to ensure that the corrosion protection properties of the product are maintained. Where panels have been cut the exposed reinforcing should be coated with CSR Hebel corrosion protection compound or approved equivalent.

CSR Hebel panels are supplied ready for use. They can be simply and easily laid into position with only the joints needing to be mortared. Installation is therefore largely dry and generally no formwork or bracing is necessary. The reinforcing in the panels is custom designed for each project. All reinforcing is corrosion protected with a water based polymer prior to being placed in the mould.

Flooring

CSR Hebel panels for flooring can be supplied in different lengths, thicknesses, widths and load carrying capacities. The thickness of slab should be in accordance with design calculations taking into account the required span, load, deflection and fire-rating requirements.

Prior to laying floor panels the top of the supporting masonry should be finished to give a level, unbroken surface. Slabs should be lifted into position one by one. It is important that the first panel is in perfect alignment so that other slabs do not need adjustment later in the installation.

After the panels are laid, reinforcing bars (N12) are placed between the panels in the recess and around the perimeter of the floor to form the ring anchor system in accordance with the design specifications.

The bars should be supported on chairs or equivalent to allow proper placing of mortar. Panels may require propping before placing the ring anchor system when subject to temporary dead load variations.

The joints and ring anchor sections should be wetted, filled with minimum 15MPa concrete (max. Aggregate size 6mm, max slump 200mm) and rodded. The concrete should completely cover the reinforcing with 25mm minimum cover.

Care should be taken to anchor the slabs so that they are not displaced by wind forces before the mortar has set.

The hardness of CSR Hebel floor panels is greater than the blocks. When placed accurately and ring anchors poured carefully and screeded properly, the surface is level and smooth. The finished surface is suitable for applying marble, quarry and ceramic tiles or carpet with a quality underlay.

Because of the initial moisture content in the panels, timber or particle board cannot be placed directly onto Hebel floor panels. An air gap must be provided by using battens.

The surface can be screeded with a self levelling mortar up to 10mm thick or a weak cement/lime mortar up to 20mm thick. Screeds greater than 25mm should be avoided as they increase the dead load on the floor system without any significant increase in load carrying capacity of protection of the floor surface from damage.

When Hebel panels are used in external floor areas such as patios or balconies, it is important to use a waterproof membrane. In these areas the ring anchor reinforcing bar should be galvanised.

Where the floor panel system has to act as a structural diaphragm, the structural engineer shall design the ring anchor

reinforcement, specifying lapping and anchorage requirements and checking adequacy of AAC material. Assistance and design advice is available from the CSR Hebel Engineering Services.

Walls

CSR Hebel panels can be used for internal and external load-bearing walls in both housing and commercial building applications. Panels can be installed either horizontally or vertically. A crane or forklift is necessary to install the CSR Hebel wall panels. A damp course should be applied before installation to avoid rising damp.

Flat Roofs

CSR Hebel roof panels are available in a range of thicknesses and lengths. The thickness can be calculated from the load-span tables.

Ventilated and non-ventilated roof structures are possible with CSR Hebel panels. The panels can be laid with flush edges or with up to 1.2m cantilever.

Sloping Roofs

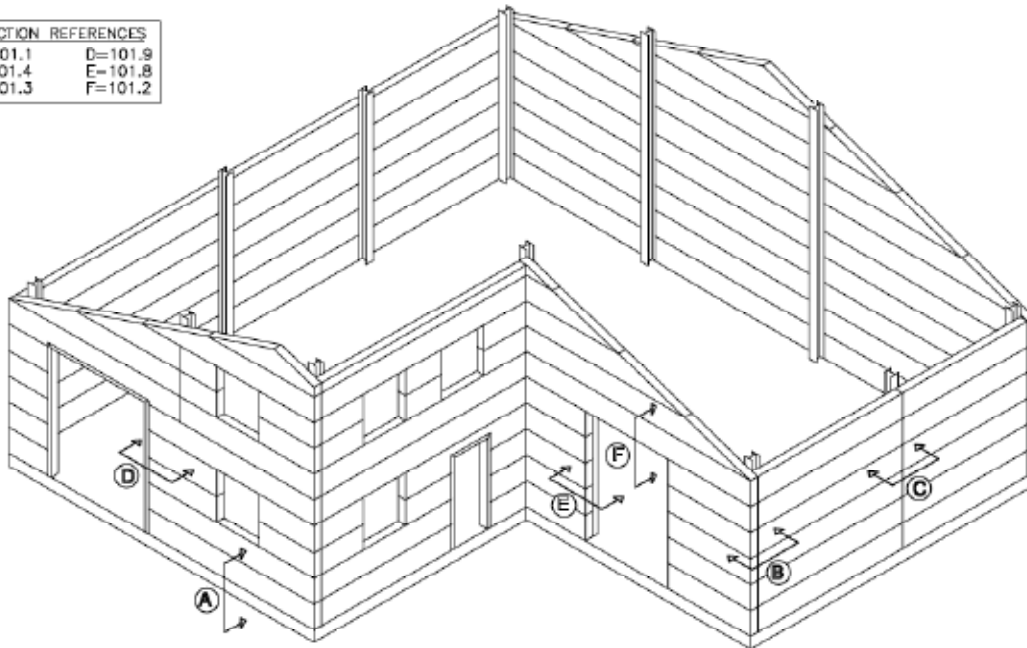
In the case of sloping roofs the panels are laid parallel to the eaves line on load-bearing bulkhead walls, either flush or with overhangs. Battens can be nailed to the panels and tiles or shingles installed. In some projects slip prevention devices should be used to anchor the slabs. Each slab in this instance should be fixed as it is installed.

The use of CSR Hebel roofing panels greatly increases the insulation value of the roof as well as providing significant levels of noise reduction and fire protection to the building.

7.11 Construction Detailing - Wall Panels

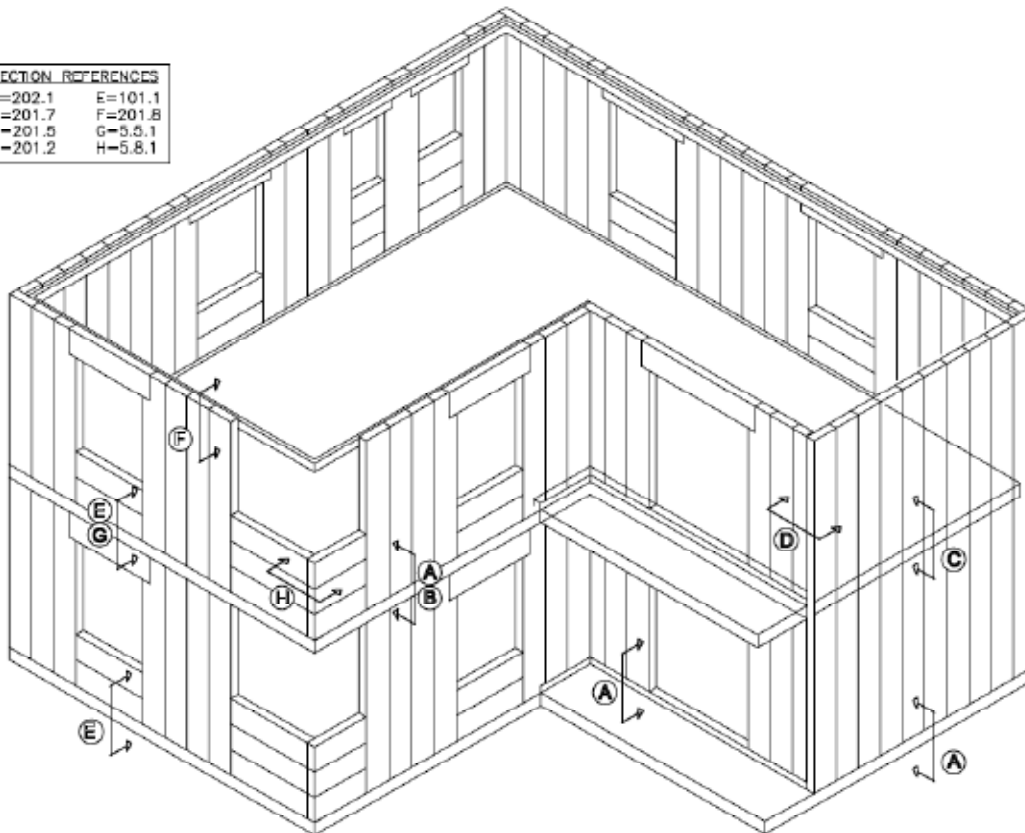
| Index of Construction Detail Drawings | | |
|---------------------------------------|--|------|
| Detail | Title | Page |
| 1.1.1 | Horizontal Wall Panels - Isometric Model Detail | 7.29 |
| 1.1.2 | Vertical Wall Panels - Isometric Model Detail | 7.29 |
| 1.2.1 | Wall Panel Isometric Detail | 7.30 |
| 1.2.2 | Wall Panel End View Detail | 7.30 |
| 1.2.3 | Wall Panel Face View Detail | 7.30 |
| 1.3.1 | Horizontal and Vertical Bearing Surfaces Identification Detail | 7.31 |
| 1.3.2 | Horizontal Bearing Surfaces and Concrete/Masonry Support Interaction Detail | 7.31 |
| 1.3.3 | Horizontal Bearing Surfaces and Steel Support Interaction Detail | 7.31 |
| 1.3.4 | Vertical Bearing Surfaces and Concrete/Masonry Support Interaction Detail | 7.32 |
| 1.3.5 | Vertical Bearing Surfaces and Steel Support Interaction Detail | 7.32 |
| 1.4.1 | Horizontal and Vertical Wall Panels Penetration Positioning and Sizing Detail | 7.33 |
| 1.4.2 | Horizontal and Vertical Wall Panels Multiple Penetration Layout Detail | 7.33 |
| 2.1.1 | Horizontal Wall Panel-Sample Plan Detail | 7.34 |
| 2.1.2 | Horizontal Wall Panel-Elevation-1 Detail | 7.34 |
| 2.2.1 | Horizontal Wall Panel & Concrete/Masonry Base Support Junction Detail | 7.35 |
| 2.2.2 | Horizontal Wall Panel & Steel Base Support Junction Detail | 7.35 |
| 2.2.3 | Horizontal Wall Panels Straight Line Wall Junction Detail | 7.35 |
| 2.2.4 | Horizontal Wall Panel & Steel Support- Corner Junction Detail | 7.36 |
| 2.2.5 | Horizontal Wall Panel & Concrete/Masonry Support-Corner Junction Detail | 7.36 |
| 2.2.6 | Horizontal Wall Panel & Steel Support-Splay Corner Junction Detail | 7.37 |
| 2.2.7 | Horizontal Wall Panel & Concrete/Masonry Support-Splay Corner Junction Detail | 7.37 |
| 2.2.8 | Horizontal Wall Panel & Steel Support - Panel Ends Junction Detail | 7.38 |
| 2.2.9 | Horizontal Wall Panel & Steel Support-Panel Ends Junction Detail | 7.38 |
| 2.2.10 | Horizontal Wall Panel & Concrete/Masonry Support- Panel Ends Junction Detail | 7.38 |
| 2.2.11 | Horizontal Wall Panel & Roof/Top of Wall Support Structure Junction Detail | 7.39 |
| 2.3.1 | Single Panel Width Opening-Isometric Detail | 7.40 |
| 2.3.2 | Single Panel Width Opening- Elevation Detail | 7.40 |
| 2.3.3 | Single Panel Width Opening-Section "AA" Detail | 7.41 |
| 2.4.1 | Multiple Panel Width Opening-Isometric Detail | 7.42 |
| 2.4.2 | Multiple Panel Width Opening-Elevation Detail | 7.42 |
| 2.4.3 | Multiple Panel Width Opening -Section A-A Detail | 7.43 |
| 2.4.4 | Multiple Panel Width Opening-Sample Door Opening Isometric Detail | 7.43 |
| 3.1.1 | Vertical Wall Panels - Sample Plan Details | 7.44 |
| 3.1.2 | Vertical Wall Panels-Sample Elevation-1 Detail | 7.44 |
| 3.1.3 | Vertical Wall Panels Sample Elevation Detail | 7.45 |
| 3.2.1 | Vertical Wall Panel & Concrete/Masonry Base Support Junction Detail | 7.46 |
| 3.2.2 | Vertical Wall Panels Corner Junction Detail | 7.46 |
| 3.2.3 | Vertical Wall Panels Splay Corner Junction Detail | 7.47 |
| 3.2.4 | Vertical Wall Panel Straight Line Control Joint Junction Detail | 7.47 |
| 3.2.5 | Vertical Wall Panels & Concrete/Masonry Structure Mid Wall Height Junction Detail | 7.48 |
| 3.2.6 | Vertical Wall Panels & Concrete/Masonry Structure End of Wall Junction Detail | 7.48 |
| 3.2.7 | Vertical Wall Panels & Concrete/Masonry Support Structure Top Wall Junction Detail | 7.49 |
| 3.2.8 | Vertical Wall Panels & Roof Structure Junction Detail | 7.49 |
| 3.3.1 | Single Panel Width Opening Detail | 7.50 |
| 3.3.2 | Multiple Panel Width Opening Detail-1 | 7.50 |
| 3.3.3 | Multiple Panel Width Opening Detail-2 | 7.51 |
| 3.3.4 | Multiple Panel Width Opening-Section A-A Detail | 7.51 |

| SECTION REFERENCES | |
|--------------------|---------|
| A=101.1 | D=101.9 |
| B=101.4 | E=101.8 |
| C=101.3 | F=101.2 |

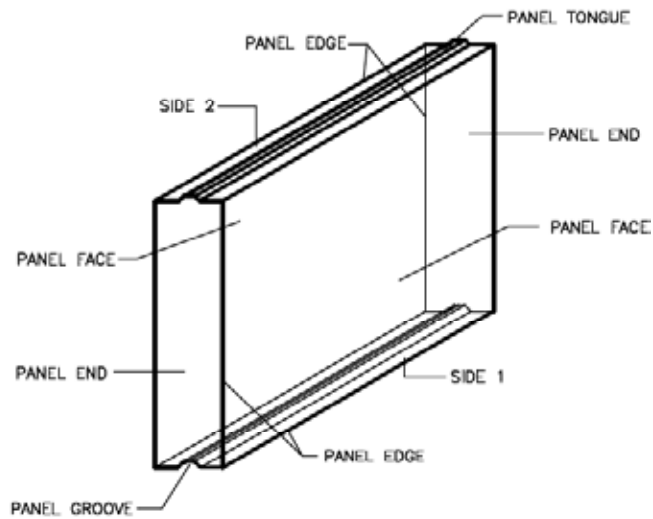


DETAIL 1.1.1 – HORIZONTAL WALL PANELS – ISOMETRIC MODEL DETAIL

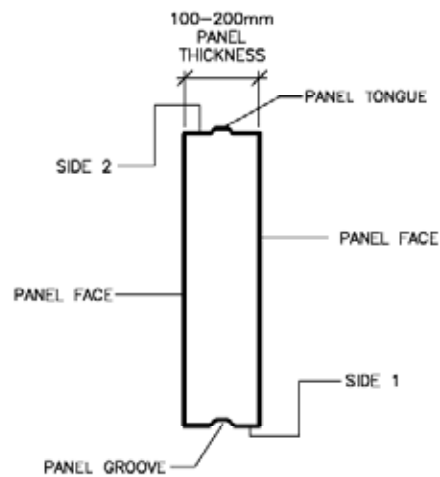
| SECTION REFERENCES | |
|--------------------|---------|
| A=202.1 | E=101.1 |
| B=201.7 | F=201.8 |
| C=201.5 | G=5.5.1 |
| D=201.2 | H=5.8.1 |



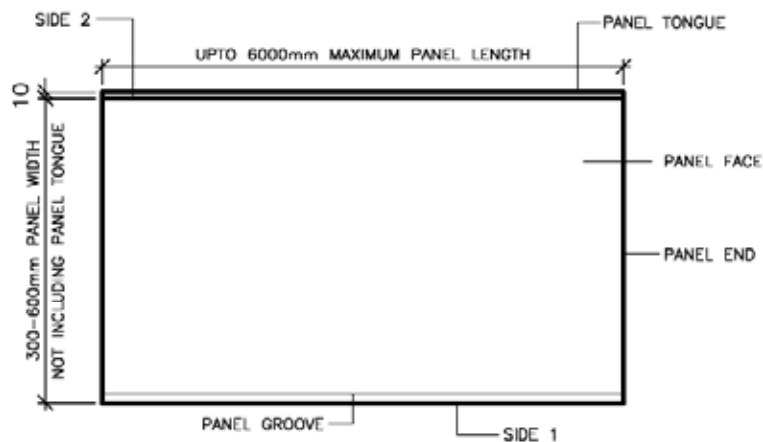
DETAIL 1.1.2 – VERTICAL WALL PANELS – ISOMETRIC MODEL DETAIL



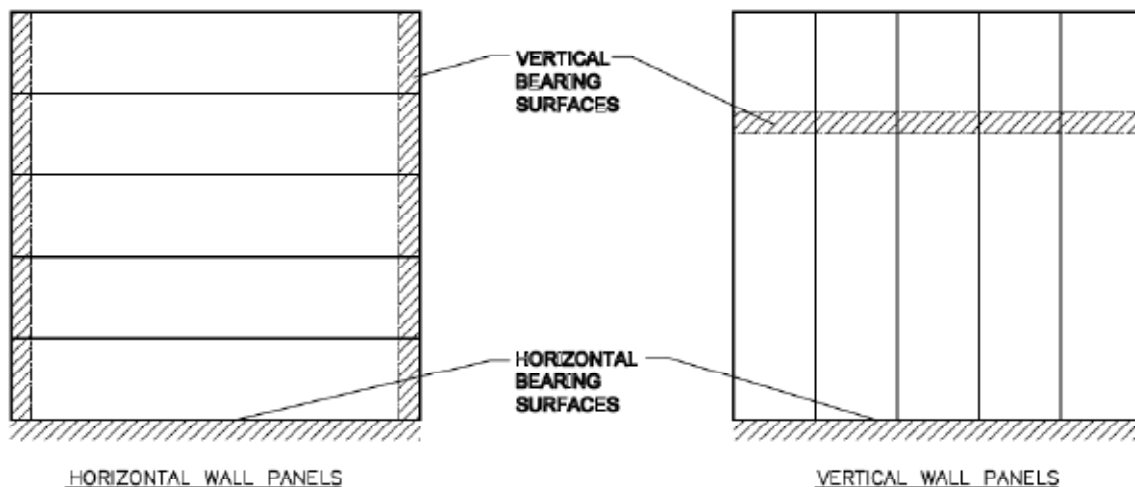
DETAIL 1.2.1 -WALL PANEL ISOMETRIC DETAIL



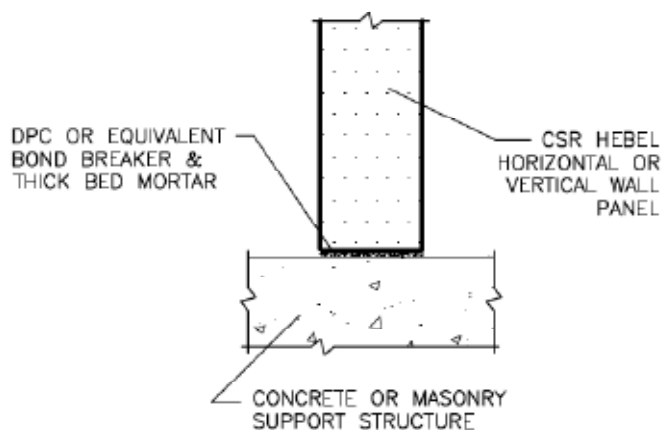
DETAIL 1.2.2 -WALL PANEL END VIEW DETAIL



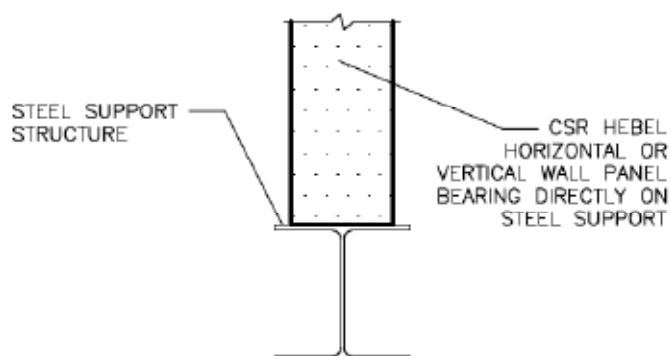
DETAIL 1.2.3 -WALL PANEL FACE VIEW DETAIL



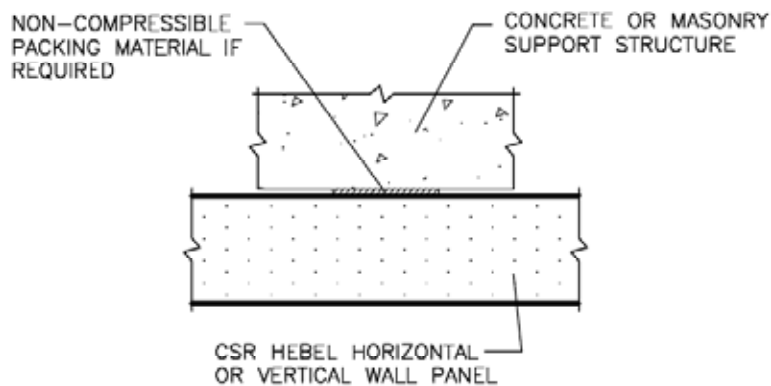
DETAIL 1.3.1 — HORIZONTAL AND VERTICAL BEARING SURFACES IDENTIFICATION
DETAIL



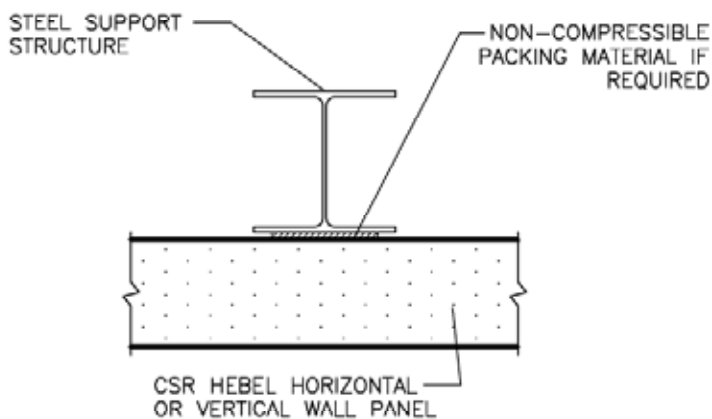
DETAIL 1.3.2 — HORIZONTAL BEARING SURFACES AND
CONCRETE/MASONRY SUPPORT INTERACTION DETAIL



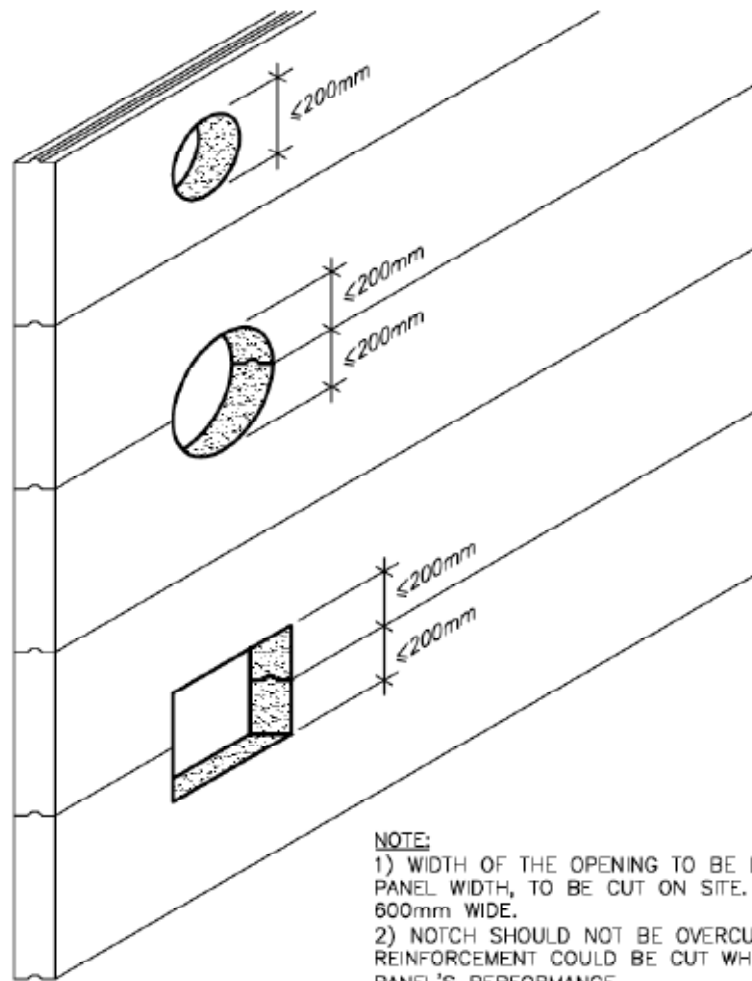
DETAIL 1.3.3 — HORIZONTAL BEARING SURFACES AND STEEL
SUPPORT INTERACTION DETAIL



DETAIL 1.3.4 – VERTICAL BEARING SURFACES AND
CONCRETE/MASONRY SUPPORT INTERACTION DETAIL



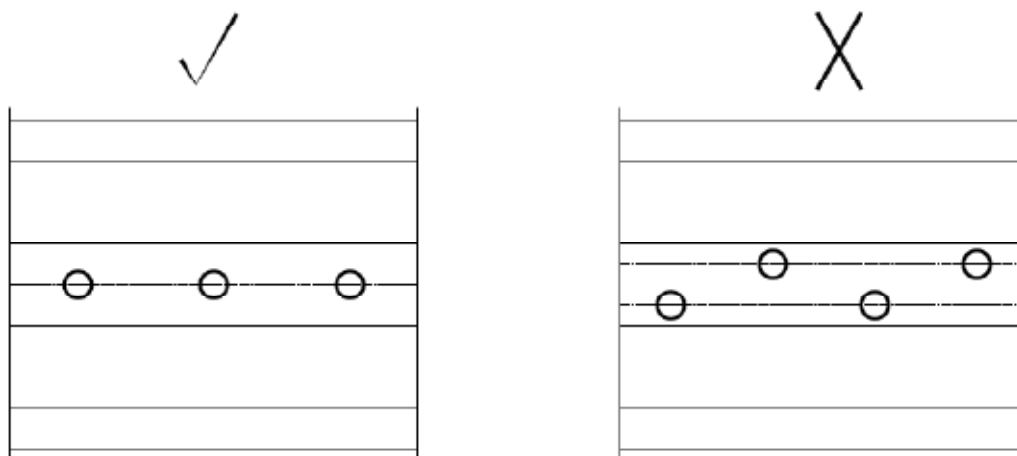
DETAIL 1.3.5 – VERTICAL BEARING SURFACES AND STEEL
SUPPORT INTERACTION DETAIL



NOTE:

- 1) WIDTH OF THE OPENING TO BE LESS THAN ONE THIRD OF PANEL WIDTH, TO BE CUT ON SITE. ALL PANELS SHOWN ARE 600mm WIDE.
- 2) NOTCH SHOULD NOT BE OVERCUT AS ADDITIONAL REINFORCEMENT COULD BE CUT WHICH WOULD REDUCE THE PANEL'S PERFORMANCE.

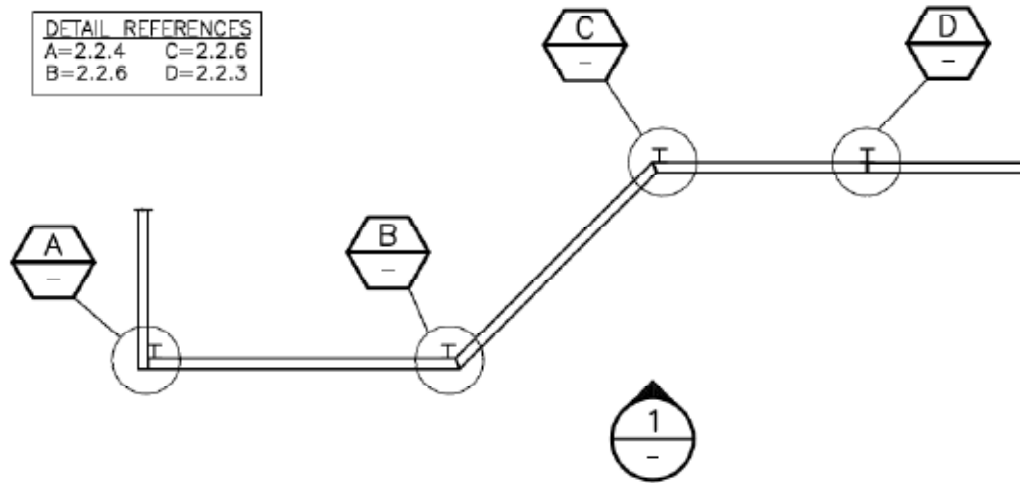
**DETAIL 1.4.1 – HORIZONTAL AND VERTICAL WALL PANELS
PENETRATION POSITIONING AND SIZING DETAIL**



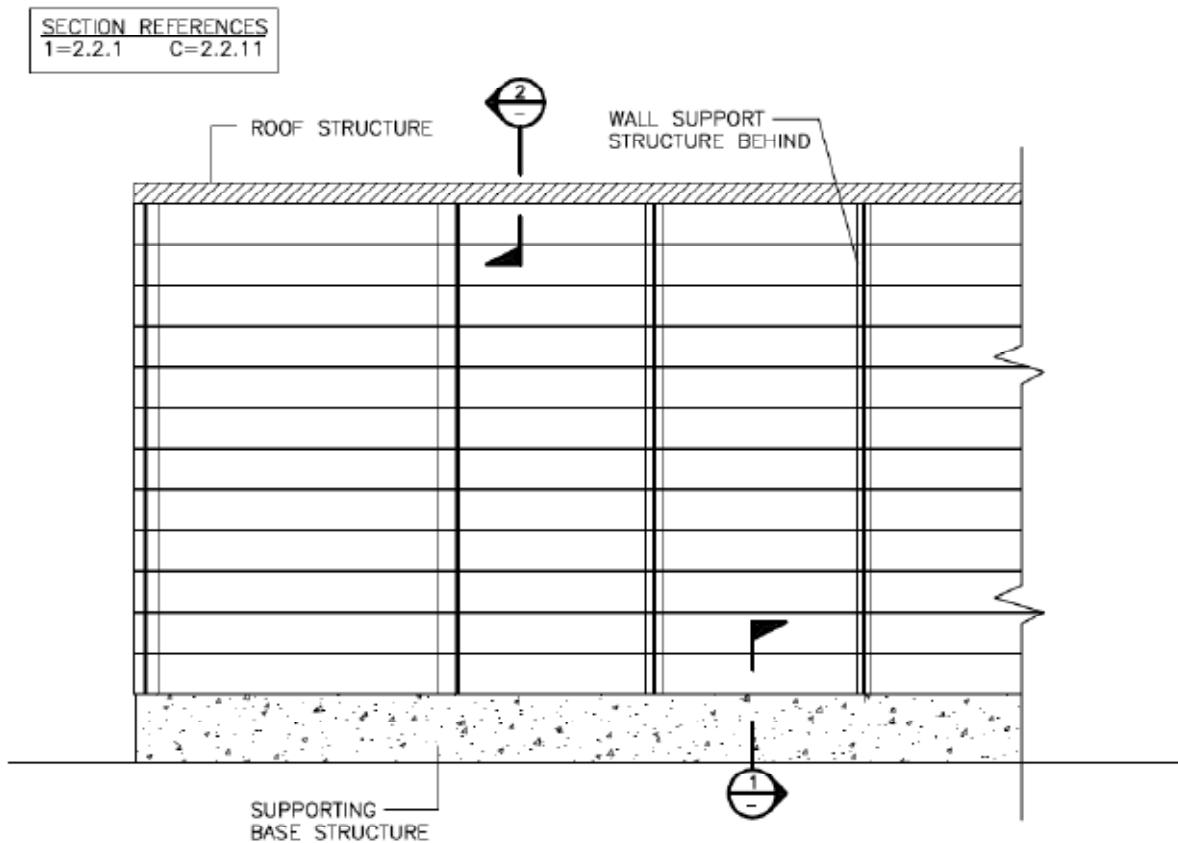
NOTE:

WHERE PENETRATIONS DO NOT ALIGN, CONTACT
CSR HEBEL ENGINEERING SERVICES FOR ADVICE

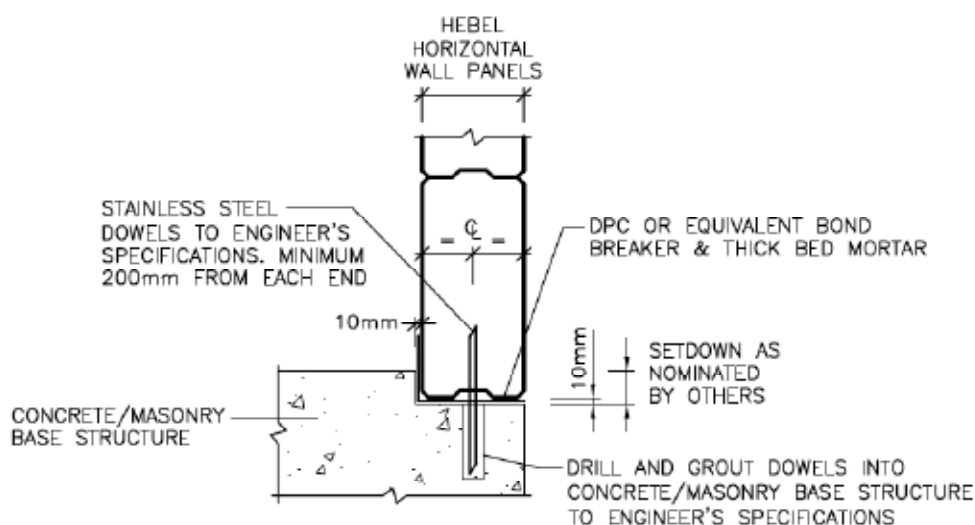
**DETAIL 1.4.2 – HORIZONTAL AND VERTICAL WALL PANELS
MULTIPLE PENETRATION LAYOUT DETAIL**



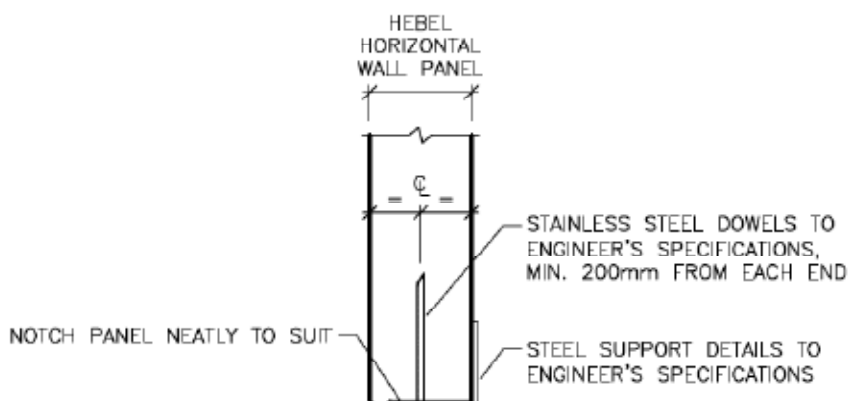
**DETAIL 2.1.1 – HORIZONTAL WALL PANEL – SAMPLE
PLAN DETAIL**



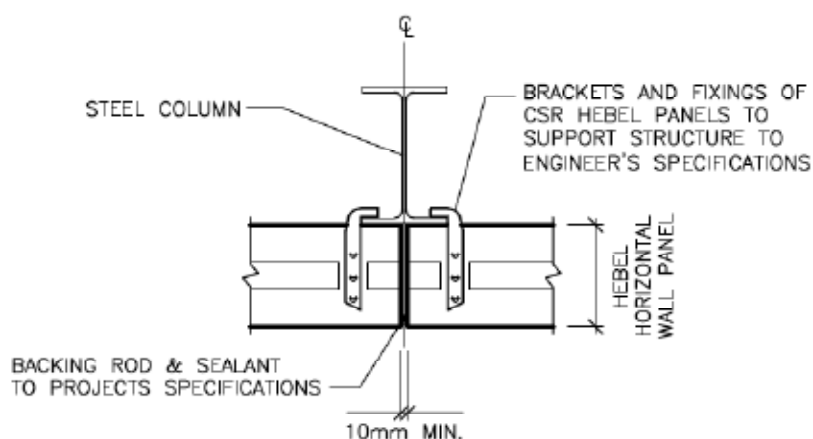
**DETAIL 2.1.2 – HORIZONTAL WALL PANEL – ELEVATION-1
DETAIL**



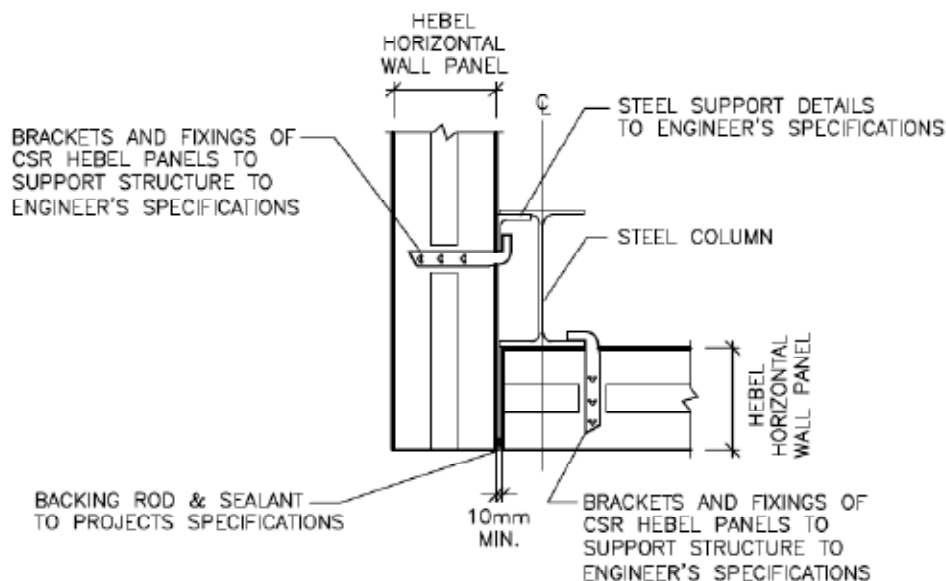
DETAIL 2.2.1 – HORIZONTAL WALL PANEL &
CONCRETE/MASONRY BASE SUPPORT JUNCTION DETAIL



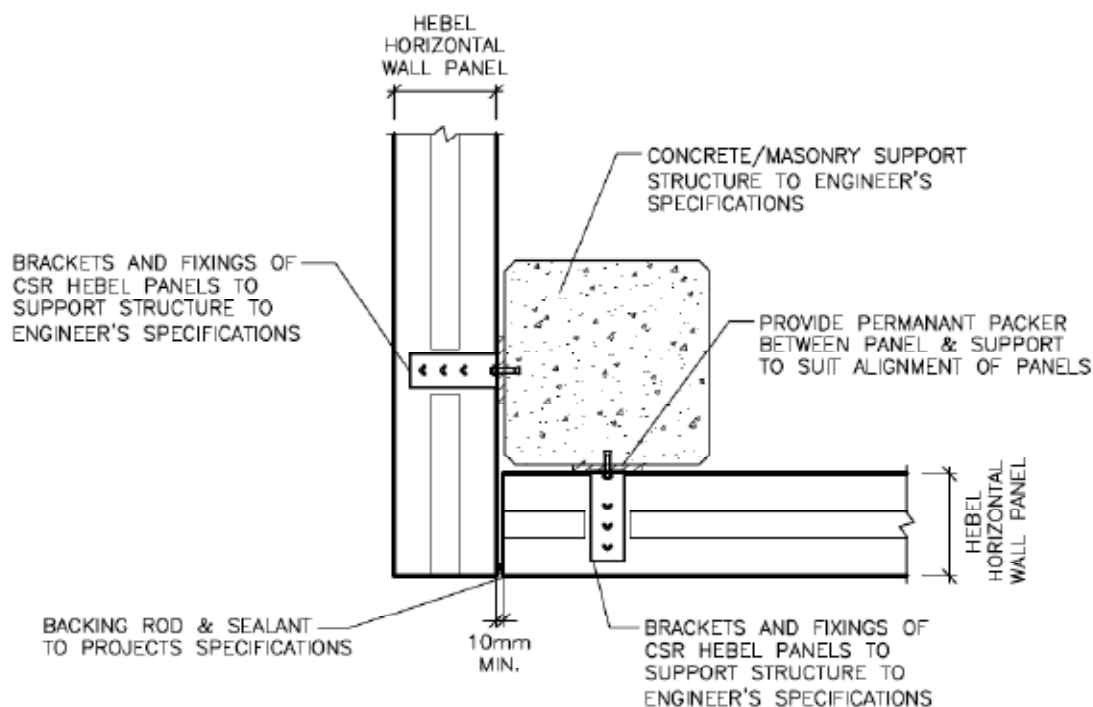
DETAIL 2.2.2 – HORIZONTAL WALL PANEL & STEEL BASE SUPPORT JUNCTION DETAIL



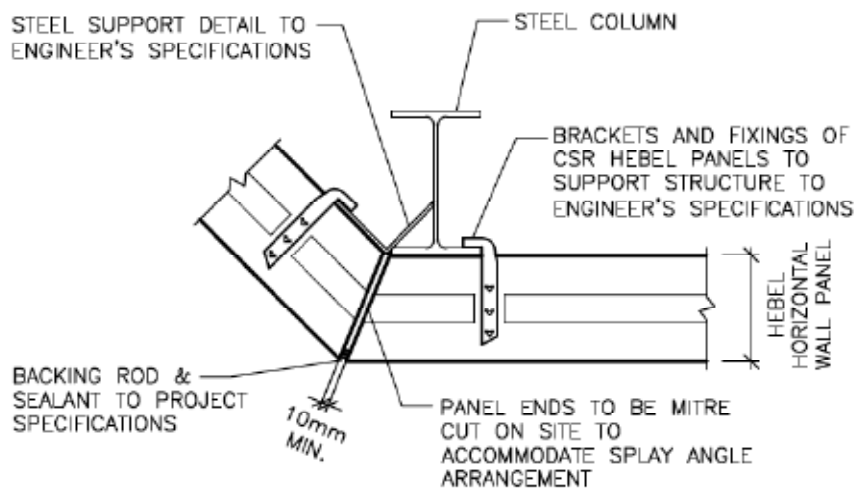
DETAIL 2.2.3 – HORIZONTAL WALL PANELS STRAIGHT LINE WALL JUNCTION DETAIL



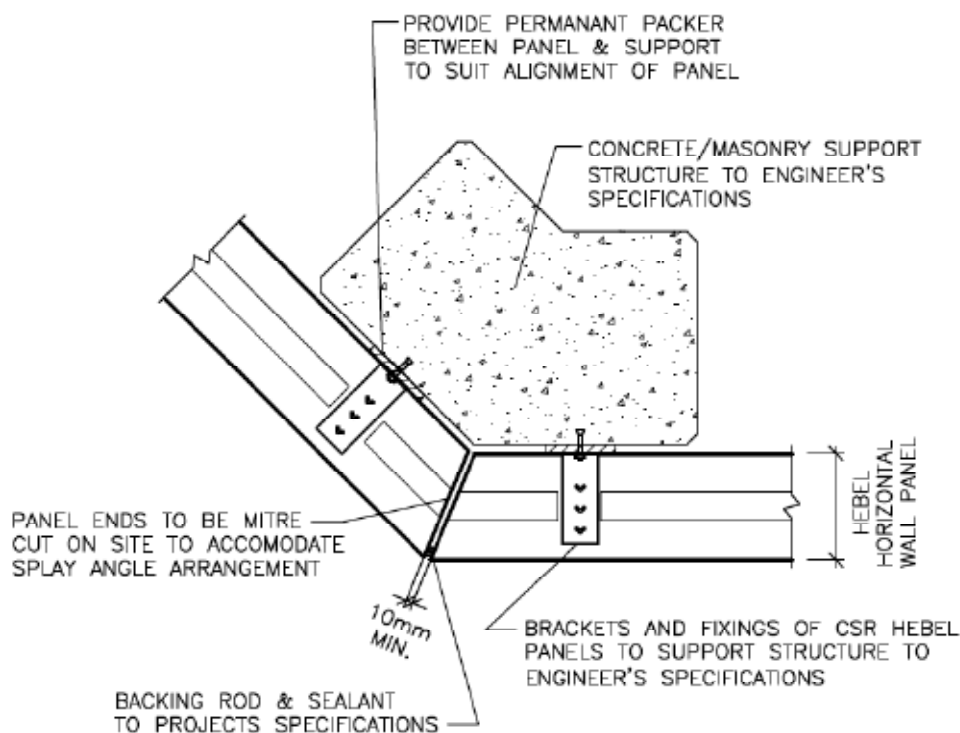
DETAIL 2.2.4 – HORIZONTAL WALL PANEL & STEEL SUPPORT – CORNER JUNCTION DETAIL



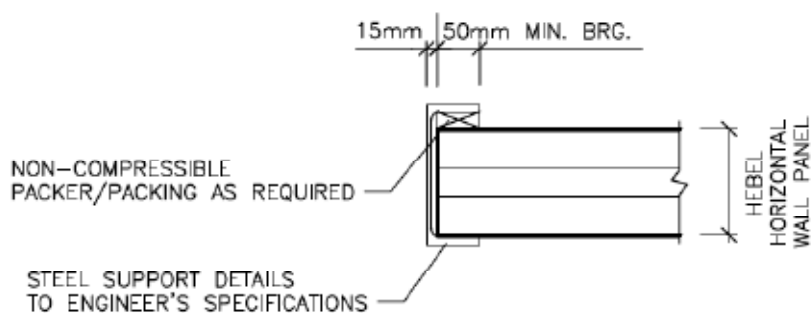
DETAIL 2.2.5 – HORIZONTAL WALL PANEL & CONCRETE/MASONRY SUPPORT – CORNER JUNCTION DETAIL



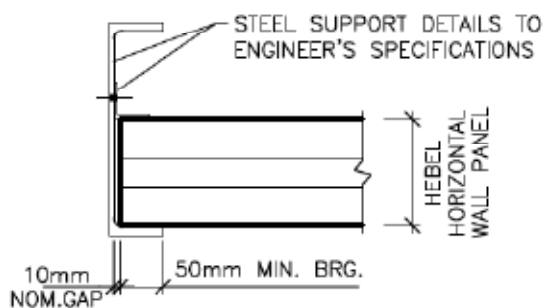
DETAIL 2.2.6 – HORIZONTAL WALL PANEL & STEEL SUPPORT – SPLAY CORNER JUNCTION DETAIL



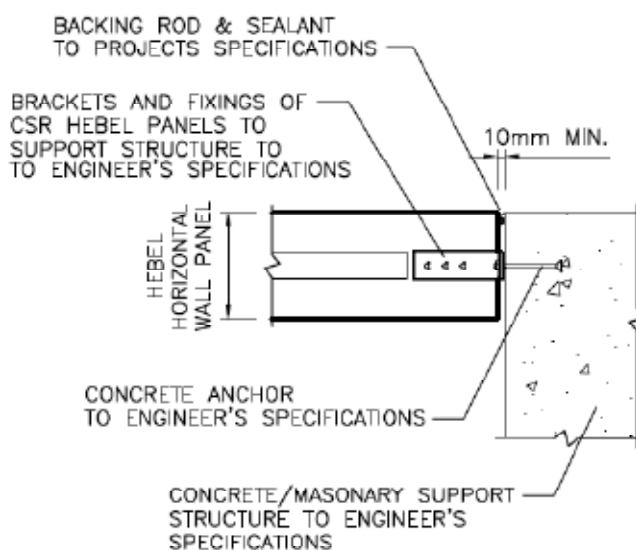
DETAIL 2.2.7 – HORIZONTAL WALL PANEL & CONCRETE/MASONRY SUPPORT – SPLAY CORNER JUNCTION DETAIL



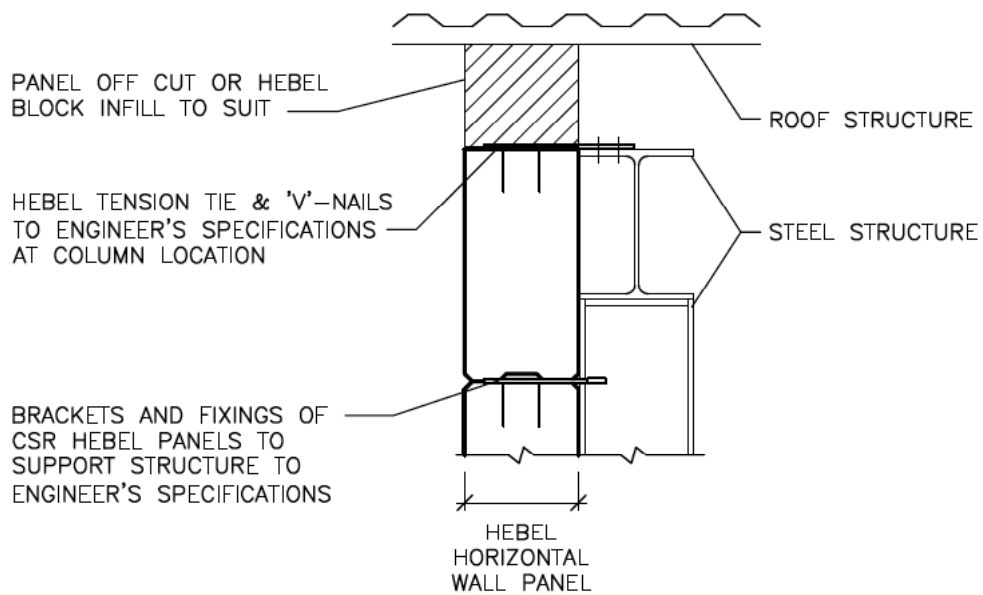
**DETAIL 2.2.8 – HORIZONTAL WALL PANEL & STEEL
SUPPORT – PANEL ENDS JUNCTION DETAIL**

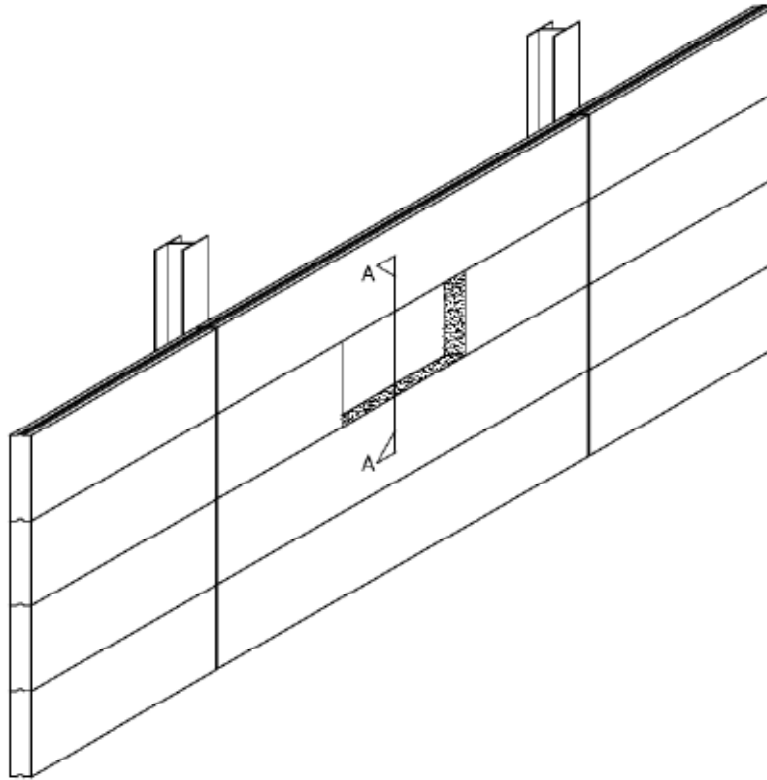


**DETAIL 2.2.9 – HORIZONTAL WALL PANEL & STEEL
SUPPORT – PANEL ENDS JUNCTION DETAIL**

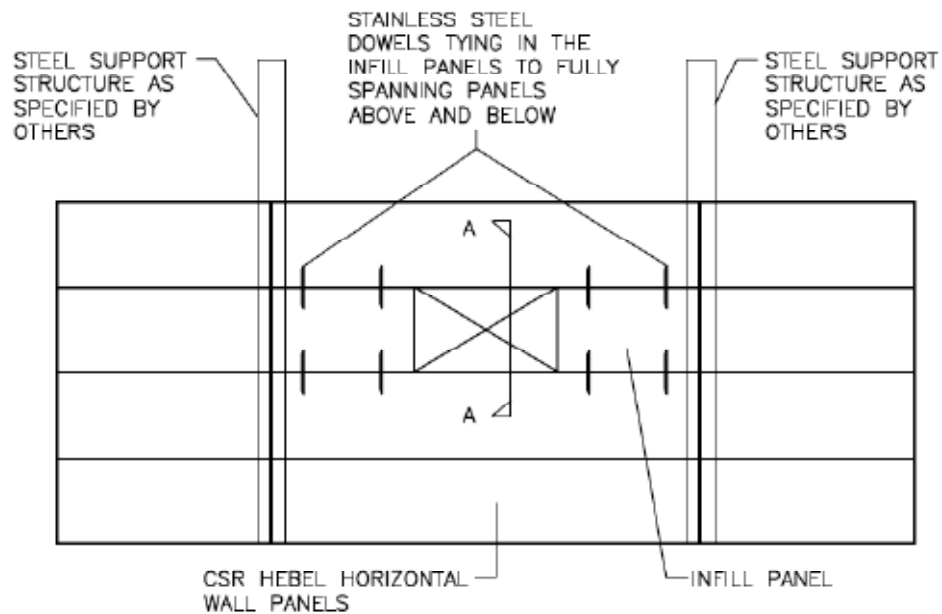


**DETAIL 2.2.10 – HORIZONTAL WALL PANEL &
CONCRETE/MASONRY SUPPORT – PANEL ENDS JUNCTION DETAIL**



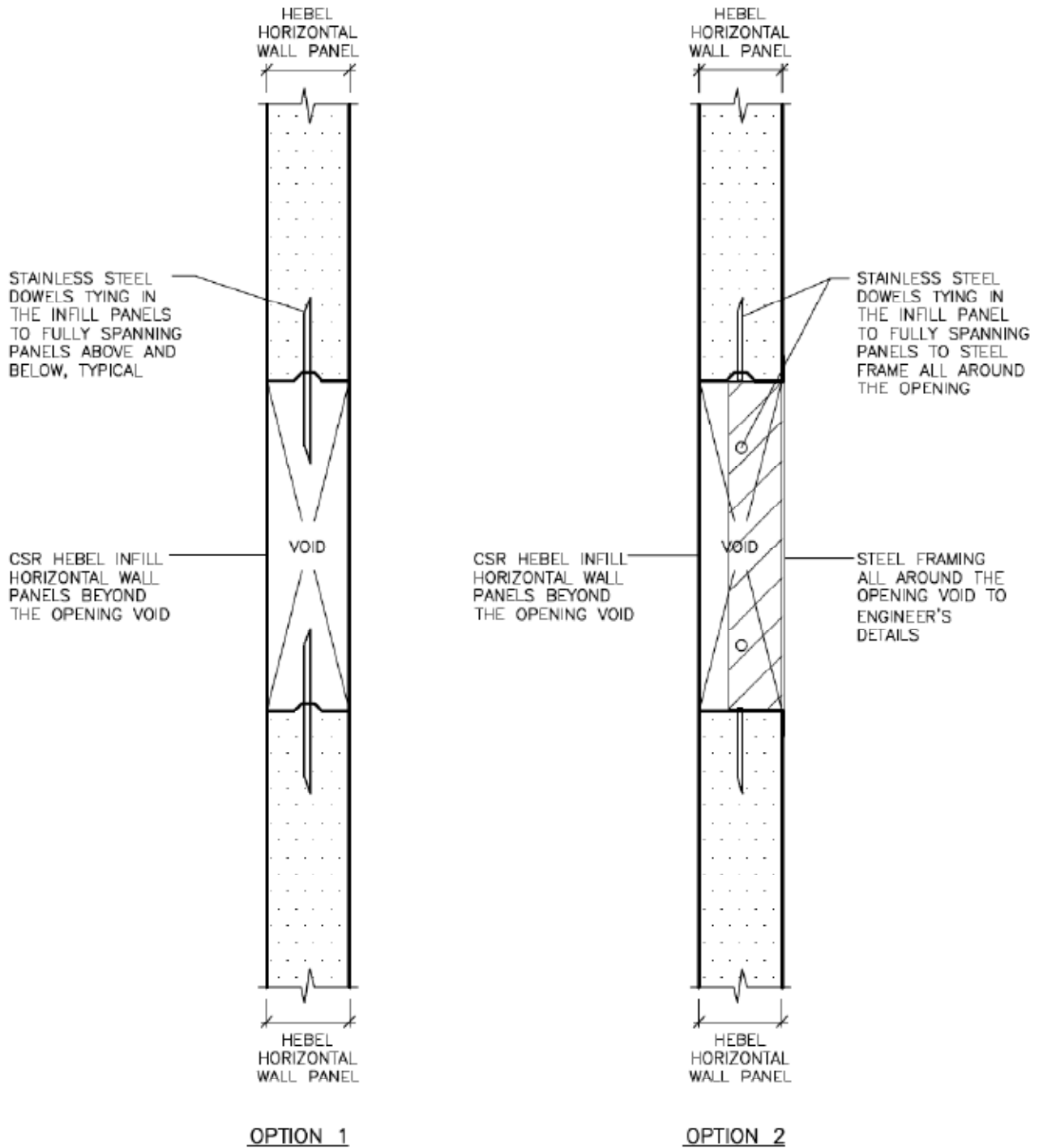


DETAIL 2.3.1 – SINGLE PANEL WIDTH OPENING – ISOMETRIC DETAIL

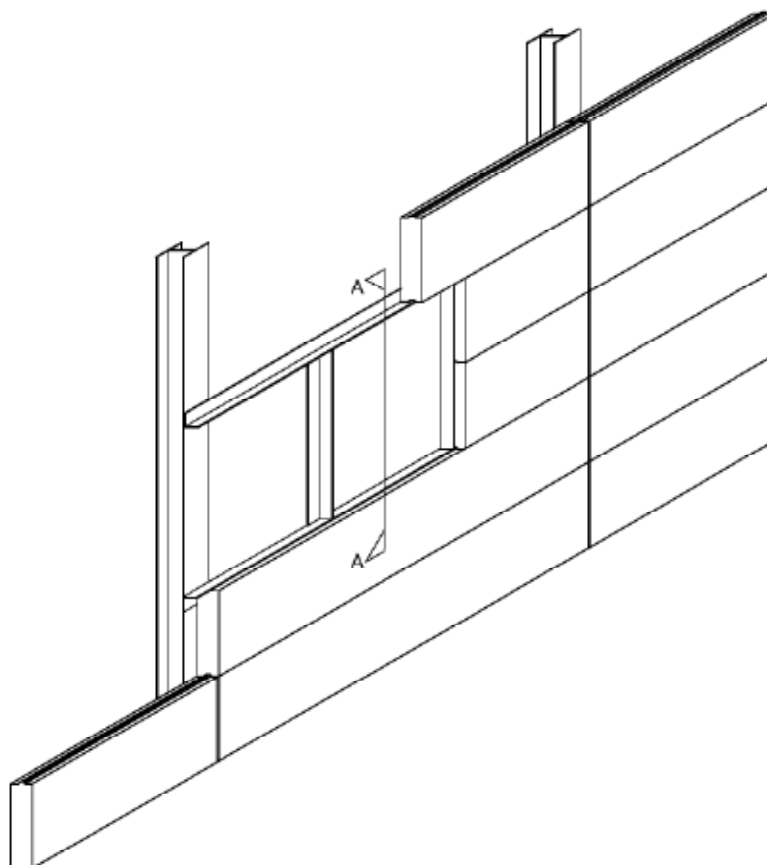


NOTE: PANELS ABOVE & BELOW OPENING TO SUPPORT LOADING SHED FROM OPENING

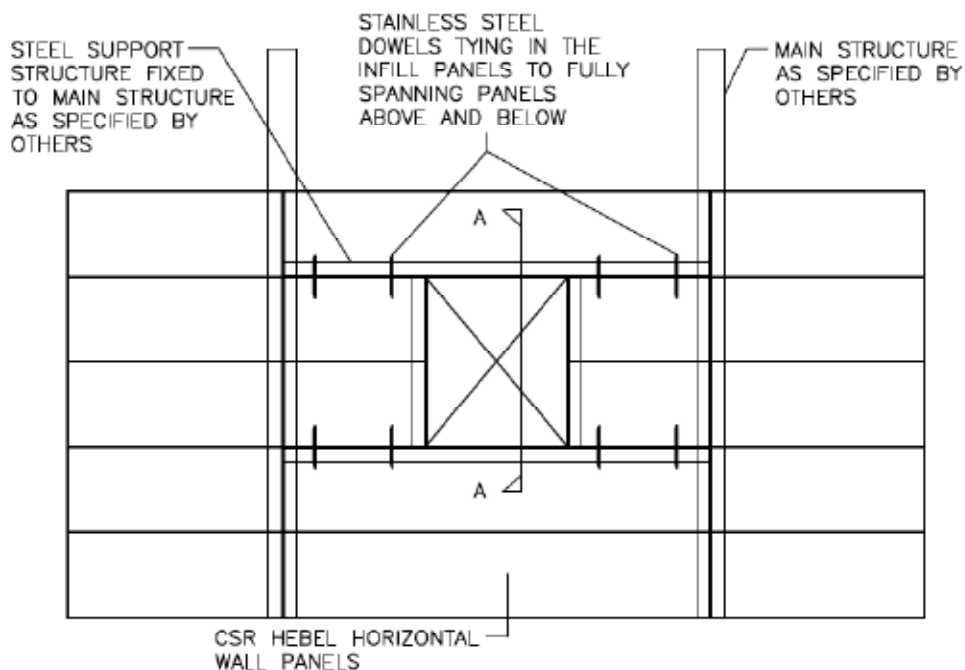
DETAIL 2.3.2 – SINGLE PANEL WIDTH OPENING – ELEVATION DETAIL



DETAIL 2.3.3 – SINGLE PANEL WIDTH OPENING – SECTION "AA" DETAIL

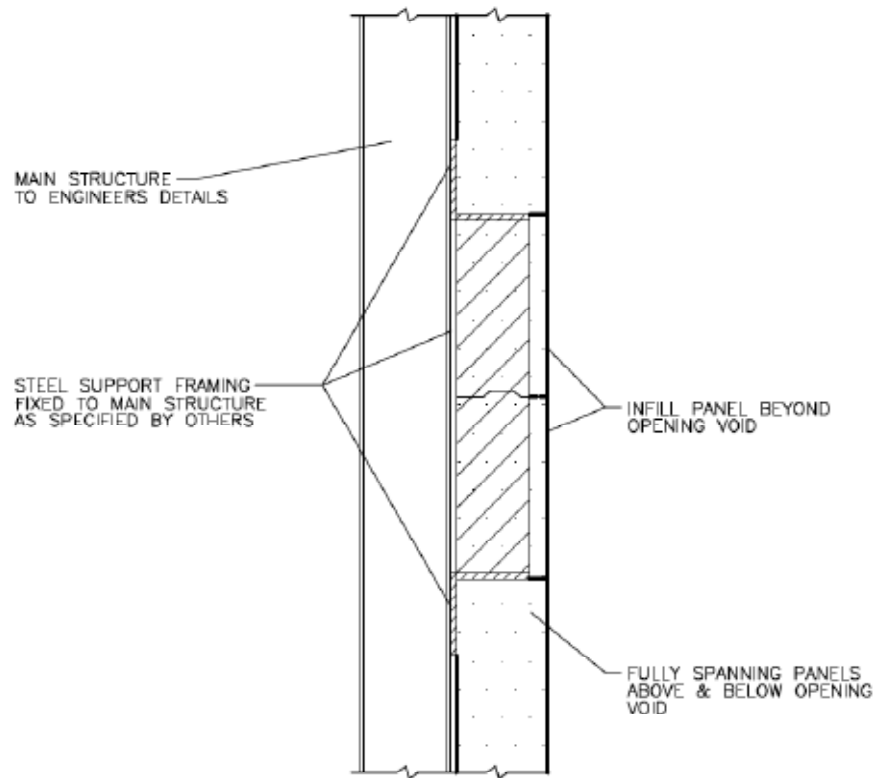


DETAIL 2.4.1 – MULTIPLE PANEL WIDTH OPENING – ISOMETRIC DETAIL

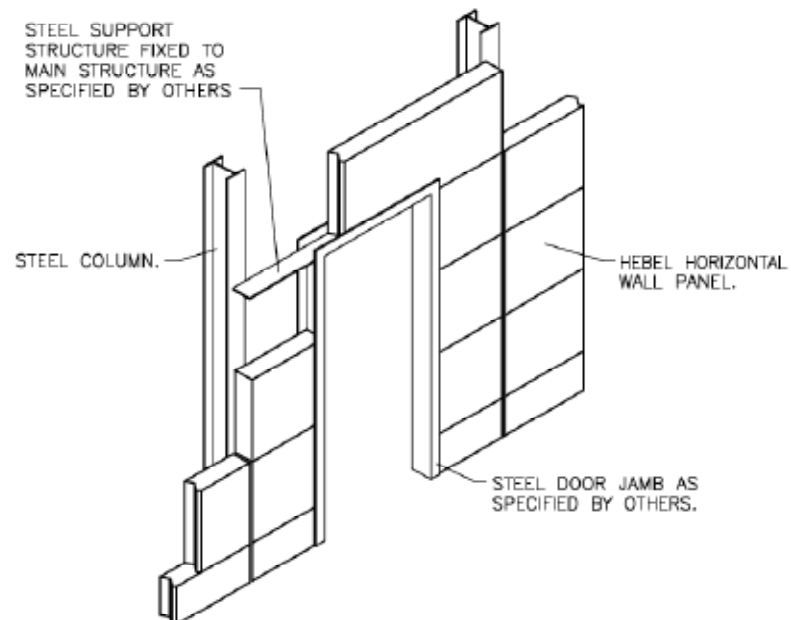


NOTE: STEEL SUPPORT STRUCTURE TO TRANSFER LOADS FROM OPENING & INFILL PANELS TO MAIN STRUCTURE. STEEL SUPPORT STRUCTURE SPECIFIED BY OTHERS

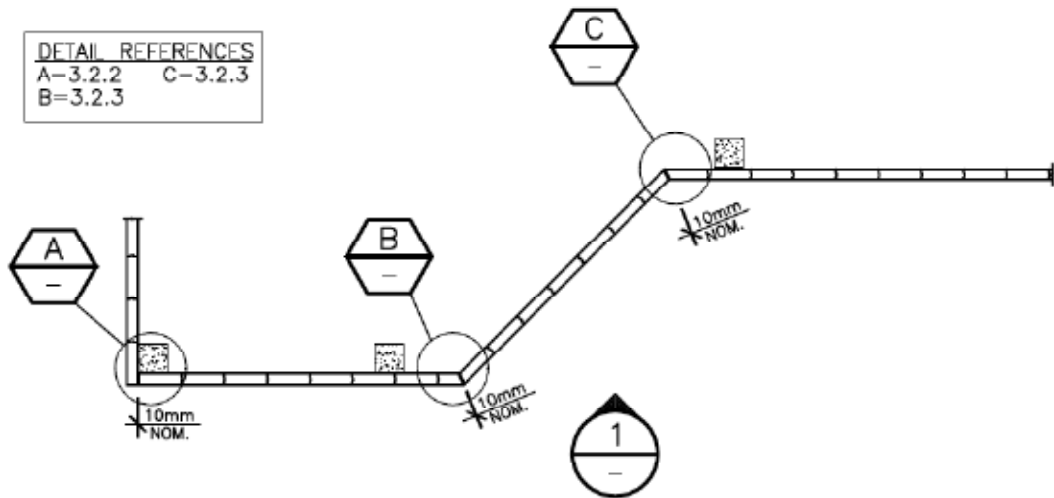
DETAIL 2.4.2 – MULTIPLE PANEL WIDTH OPENING – ELEVATION DETAIL



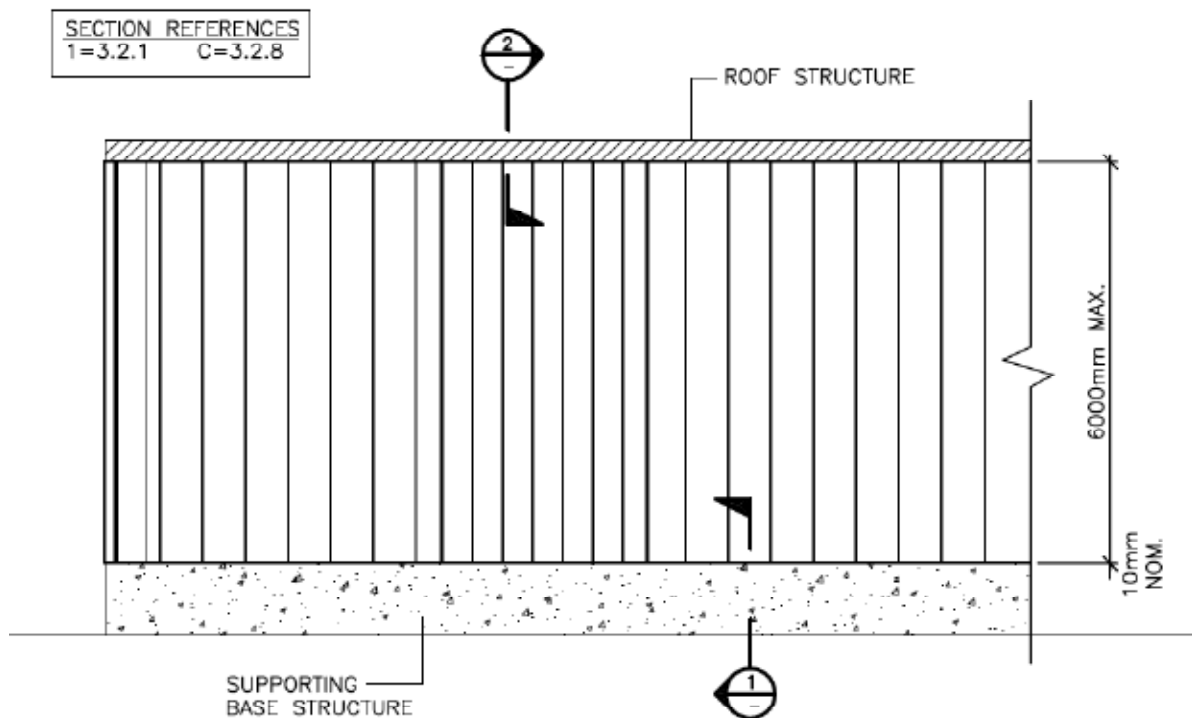
DETAIL 2.4.3 – MULTIPLE PANEL WIDTH OPENING – SECTION A-A DETAIL



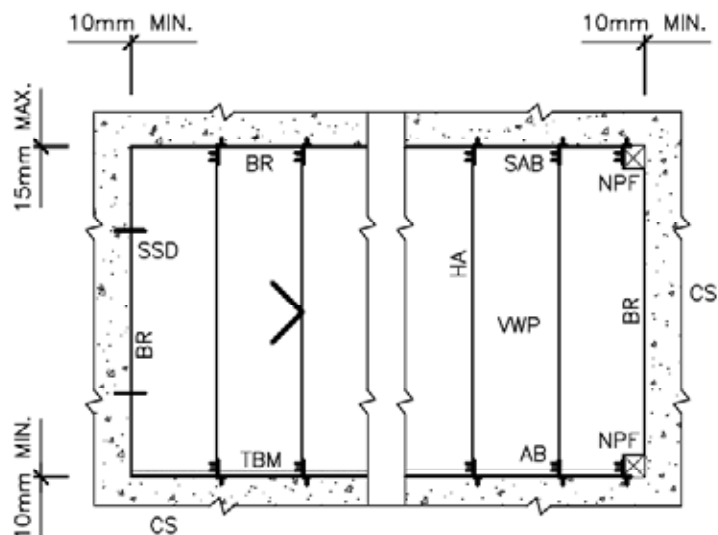
DETAIL 2.4.4 – MULTIPLE PANEL WIDTH OPENING – SAMPLE DOOR
OPENING ISOMETRIC DETAIL



DETAIL 3.1.1 – VERTICAL WALL PANELS – SAMPLE PLAN DETAILS



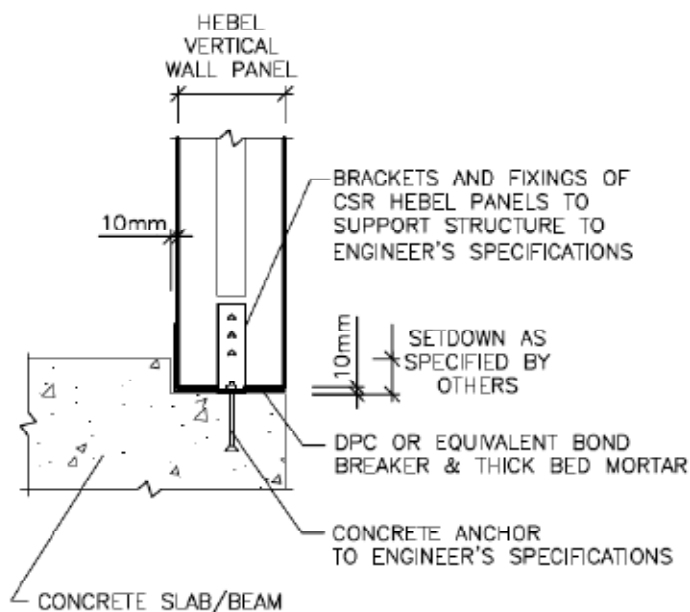
DETAIL 3.1.2 – VERTICAL WALL PANELS – SAMPLE
ELEVATION-1 DETAIL



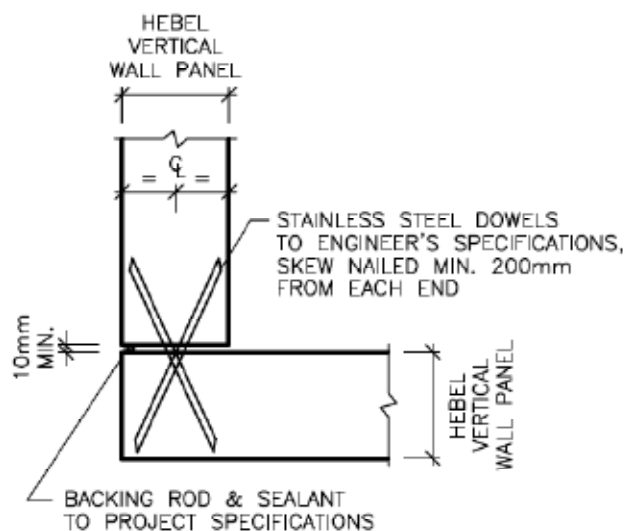
**DETAIL 3.1.3 – VERTICAL WALL PANELS SAMPLE
ELEVATION DETAIL**

LEGEND:

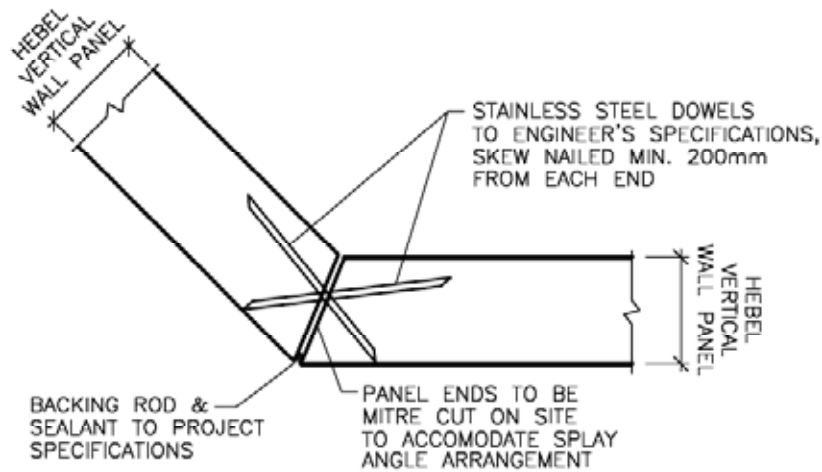
- AB = ANGLE BRACKET, REF TO DETAILS
- CS = CONCRETE SUPPORT SLAB/BREAM/WALL
- BR = BACKING ROD & SEALANT TO PROJECTS SPECIFICATIONS
- HA = HEBEL ADHESIVE
- VWP = HEBEL VERTICAL WALL PANEL
- TBM = DPC OR EQUIVALENT BOND BREAKER & THICK BED MORTAR
- NPF = NOTCH PANEL & FILL AS PER SPECIFICATIONS
- SAB = SLOTTED ANGLE BRACKET, REF TO DETAILS
- SSD = STAINLESS STEEL DOWELS, REF TO DETAILS



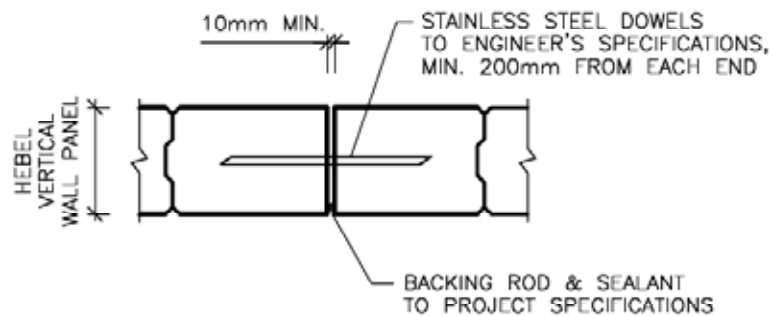
DETAIL 3.2.1 – VERTICAL WALL PANEL & CONCRETE/MASONRY BASE SUPPORT JUNCTION DETAIL



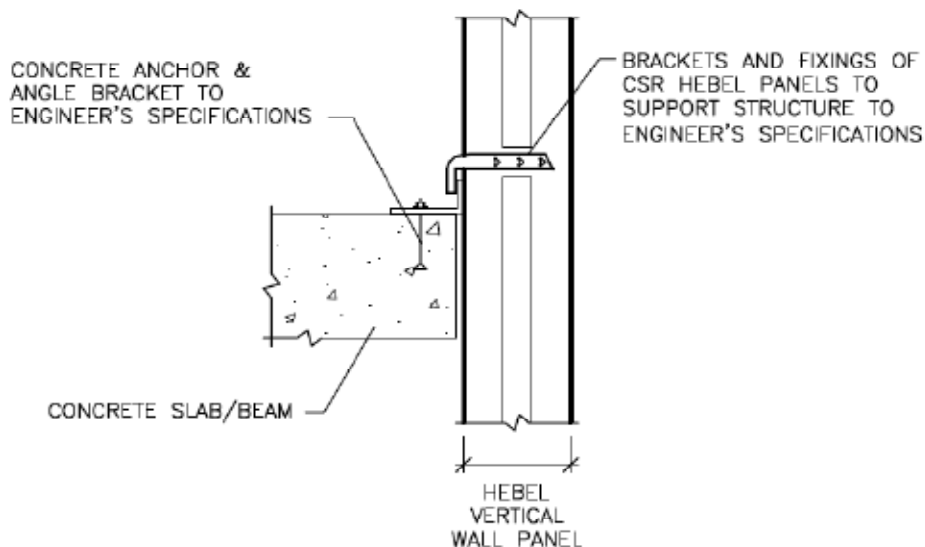
DETAIL 3.2.2 – VERTICAL WALL PANELS CORNER JUNCTION DETAIL



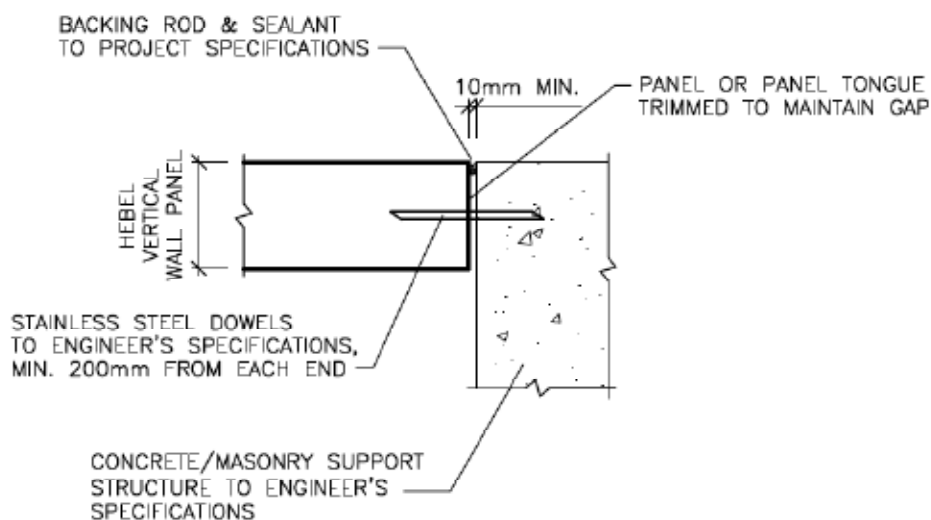
**DETAIL 3.2.3 – VERTICAL WALL PANELS SPLAY CORNER
JUNCTION DETAIL**



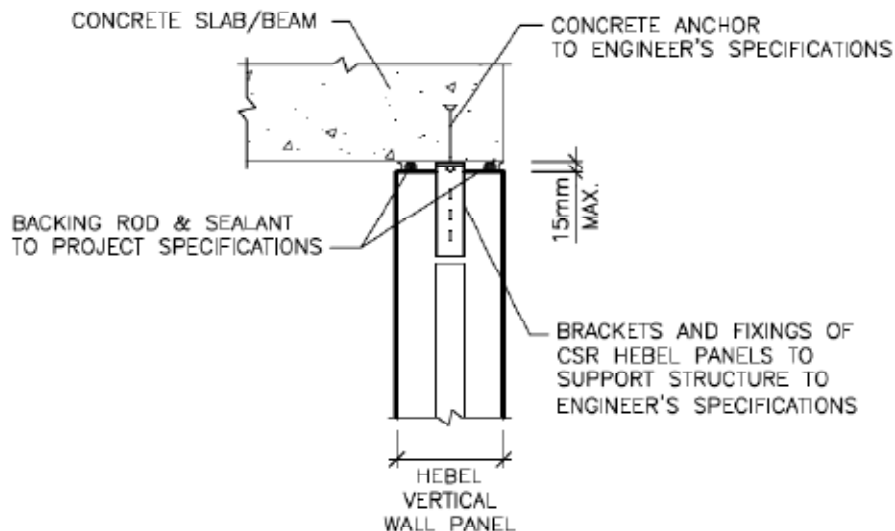
**DETAIL 3.2.4 – VERTICAL WALL PANEL STRAIGHT LINE CONTROL JOINT
JUNCTION DETAIL**



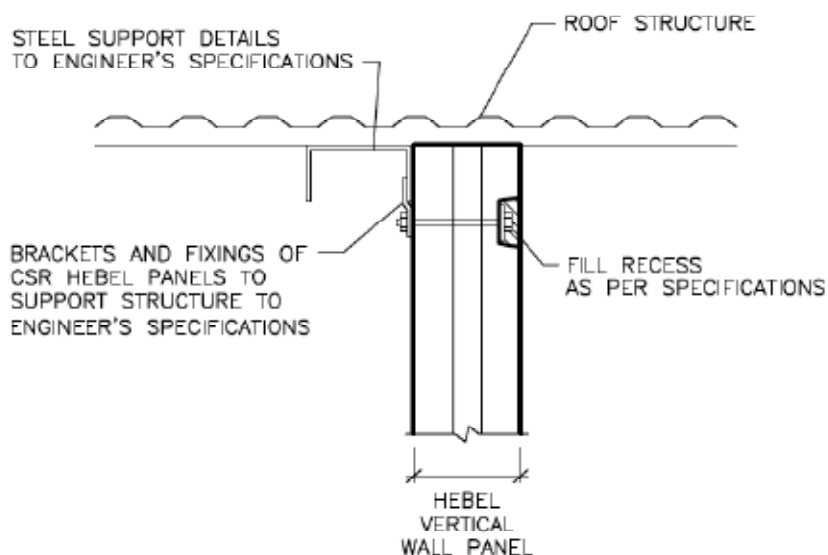
DETAIL 3.2.5 – VERTICAL WALL PANELS & CONCRETE/MASONRY STRUCTURE
MID WALL HEIGHT JUNCTION DETAIL



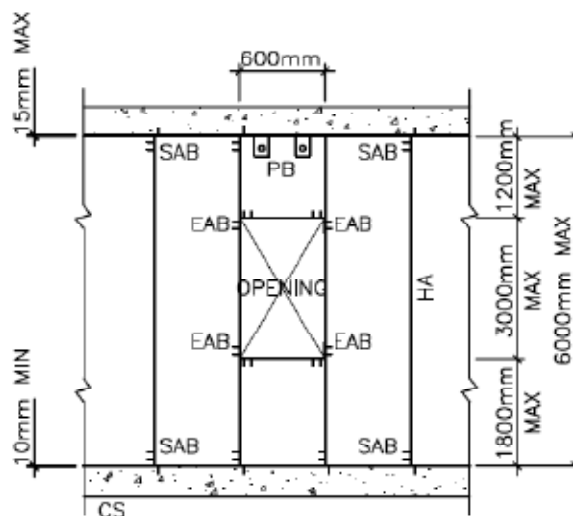
DETAIL 3.2.6 – VERTICAL WALL PANELS & CONCRETE/MASONRY STRUCTURE
END OF WALL JUNCTION DETAIL



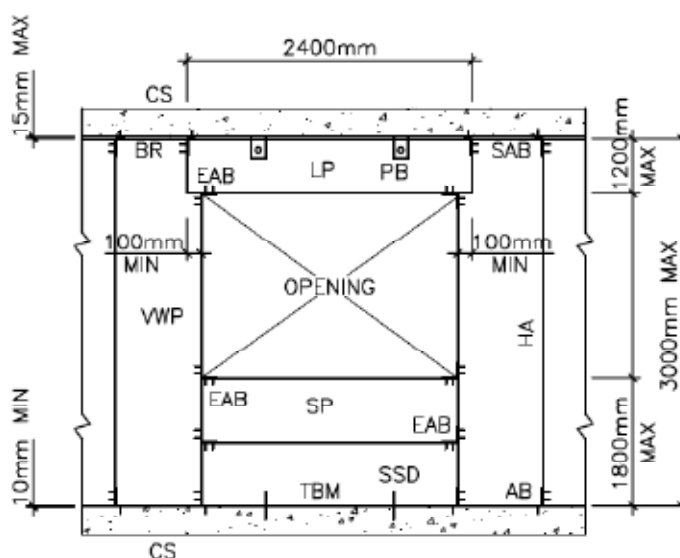
**DETAIL 3.2.7 – VERTICAL WALL PANELS & CONCRETE/MASONRY SUPPORT
STRUCTURE TOP OF WALL JUNCTION DETAIL**



**DETAIL 3.2.8 – VERTICAL WALL PANELS & ROOF STRUCTURE
JUNCTION DETAIL**



DETAIL 3.3.1 – SINGLE PANEL WIDTH OPENING DETAIL



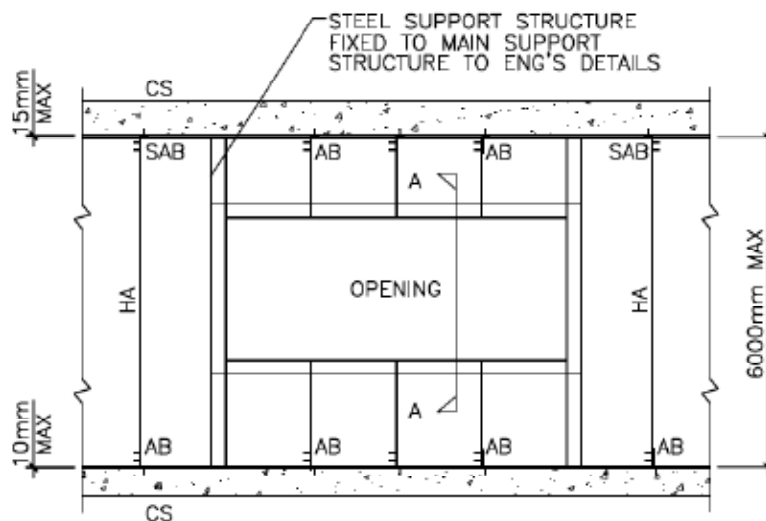
DETAIL 3.3.2 – MULTIPLE PANEL WIDTH OPENING DETAIL-1

LEGEND:

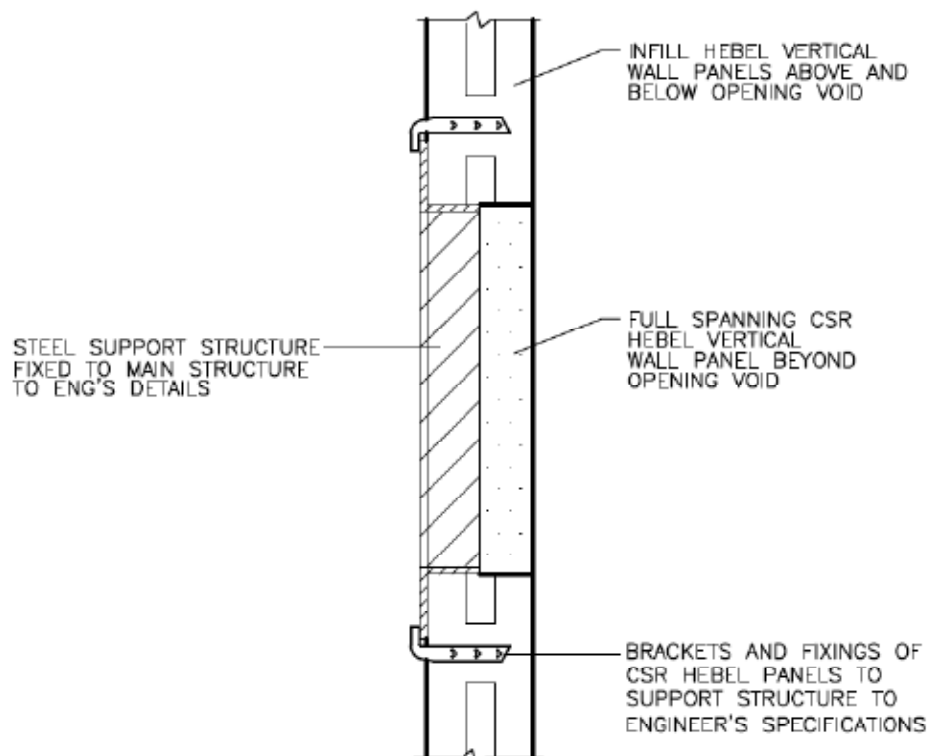
- AB = ANGLE BRACKET, REF TO DETAILS
- CS = CONCRETE SUPPORT SLAB/BEAM/WALL
- BR = BACKING ROD & SEALANT TO PROJECT SPECIFICATIONS
- LP = HEBEL HORIZONTAL LINTEL PANEL
- SP = HEBEL HORIZONTAL SILL PANEL
- HA = HEBEL ADHESIVE
- VWP = HEBEL VERTICAL WALL PANEL
- HWP = HEBEL HORIZONTAL WALL PANELS
- TBM = DPC OR EQUIVALENT BOND BREAKER & THICK BED MORTAR
- NPF = NOTCH PANEL & FILL AS PER SPECIFICATIONS
- PB = CSR HEBEL PLATE BRACKET
- SAB = SLOTTED ANGLE BRACKET, REF TO DETAILS
- SSD = STAINLESS STEEL DOWELS, REF TO DETAILS
- EAB = CSR HEBEL EA BRACKET

LEGEND:

AB = ANGLE BRACKET, REF TO DETAILS
CS = CONCRETE SUPPORT SLAB/BEAM/WALL
BR = BACKING ROD & SEALANT TO PROJECT SPECIFICATIONS
LP = HEBEL HORIZONTAL LINTEL PANEL
SP = HEBEL HORIZONTAL SILL PANEL
HA = HEBEL ADHESIVE
VWP = HEBEL VERTICAL WALL PANEL
HWP = HEBEL HORIZONTAL WALL PANELS
TBM = DPC OR EQUIVALENT BOND BREAKER & THICK BED MORTAR
NPF = NOTCH PANEL & FILL AS PER SPECIFICATIONS
PB = CSR HEBEL PLATE BRACKET
SAB = SLOTTED ANGLE BRACKET, REF TO DETAILS
SSD = STAINLESS STEEL DOWELS, REF TO DETAILS



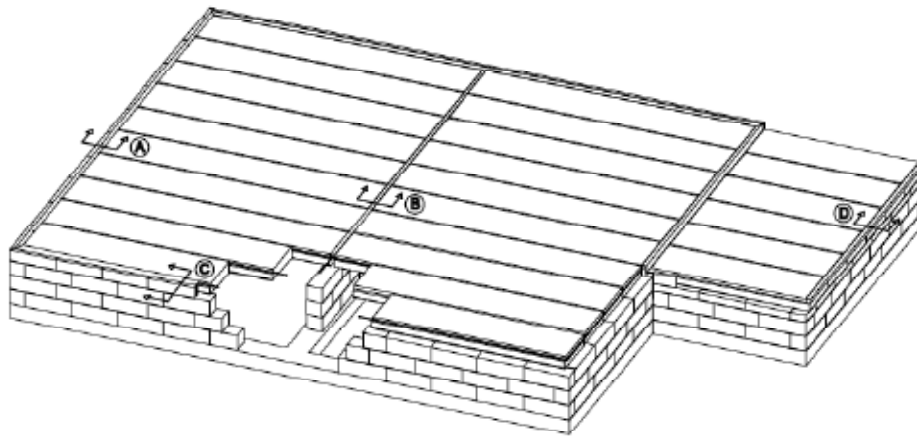
DETAIL 3.3.3 – MULTIPLE PANEL WIDTH OPENING DETAIL-2



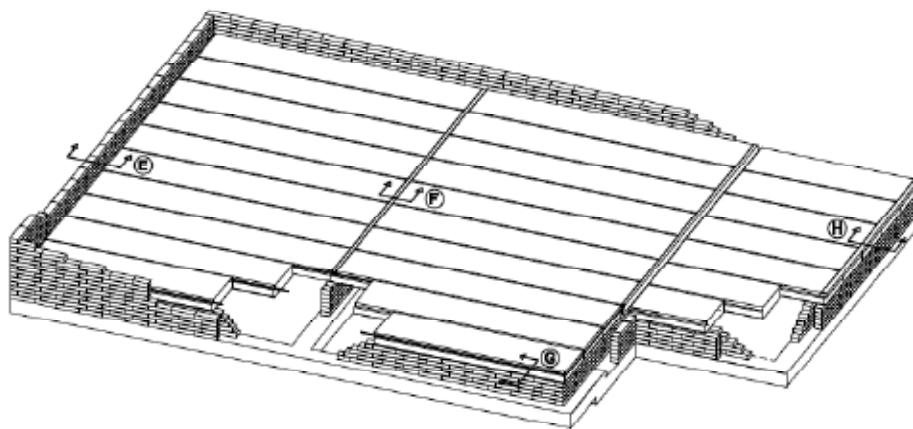
DETAIL 3.3.4 – MULTIPLE PANEL WIDTH OPENING – SECTION A-A DETAIL

7.12 Construction Detailing - Floor Panels

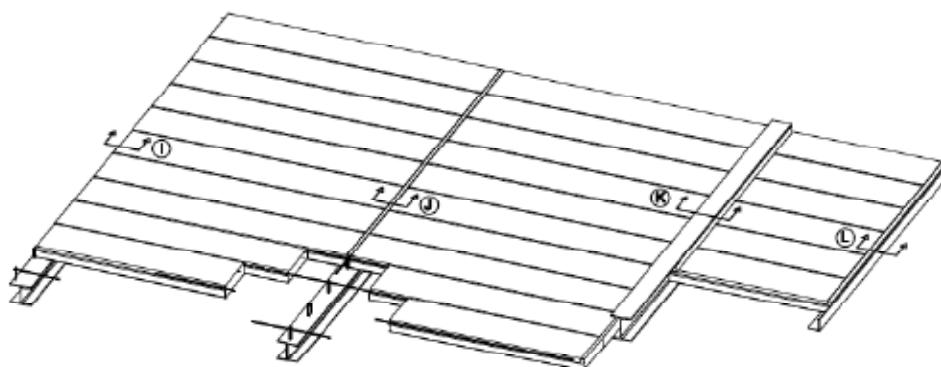
| Index of Construction Detail Drawings | | |
|---------------------------------------|---|------|
| Detail | Title | Page |
| 1.0 | Isometric, Floor Panels on Hebel Block Support | 7.53 |
| 1.1 | Isometric, Floor Panels on Masonry Support | 7.53 |
| 1.2 | Isometric, Floor Panels on Steel Support | 7.53 |
| 2.0 | Floor Panel Isometric Detail | 7.54 |
| 2.1 | Floor Panel End View Detail | 7.54 |
| 2.2 | Floor Panel Side 1 View Detail | 7.54 |
| 3.1 | Hebel Floor Panel Bearing on Hebel Support Interaction Detail | 7.55 |
| 3.2 | Hebel Floor Panel Bearing on Masonry Support Interaction Detail | 7.55 |
| 3.3 | Hebel Floor Panel Bearing on Steel Support Interaction Detail | 7.55 |
| 4.1 | Panel End Bearing Details | 7.56 |
| 4.2 | Panel Side Bearing Details | 7.56 |
| 5.1 | Floor Panel Perimeter Support Detail-1 | 7.57 |
| 5.1.1 | Floor Panel Perimeter Support Detail-2 | 7.57 |
| 5.2 | Floor Panel Internal Support Detail | 7.57 |
| 5.3 | Typical Corner Ring Anchor Setout | 7.58 |
| 5.3.1 | Setout of Ring Anchor with Panels Staggered | 7.58 |
| 5.3.2 | Setout of Ring Anchor with Adjoining Panels | 7.58 |
| 5.3.3 | Ring Anchor Reinforcement Positioning and Restraint Over Hebel or Masonry Supports-Panel End View | 7.59 |
| 5.3.4 | Ring Anchor Reinforcement Positioning and Restraint over Steel Supports - Panel End View | 7.59 |
| 5.3.5 | Ring Anchor Site Panel Notching Detail (PND) | 7.60 |
| 5.3.6 | Ring Anchor Steel Cleat Detail "SCD" Typical | 7.60 |
| 6.1 | General Panel Section Detail-1 | 7.61 |
| 6.2 | General Panel Section Detail-2 | 7.61 |
| 7.1 | Penetration Positioning and Sizing Detail | 7.62 |
| 7.1.1 | Multiple Penetrations Layout Detail | 7.62 |
| 7.2 | Single Panel Width Opening - Isometric Detail | 7.63 |
| 7.2.1 | Single Panel Width Opening-Section "AA" Detail | 7.63 |
| 7.3 | Multi-Panel Width Openings-Isometric Detail | 7.64 |
| 7.3.1 | Multi-Panel Width Openings- Section Details | 7.64 |



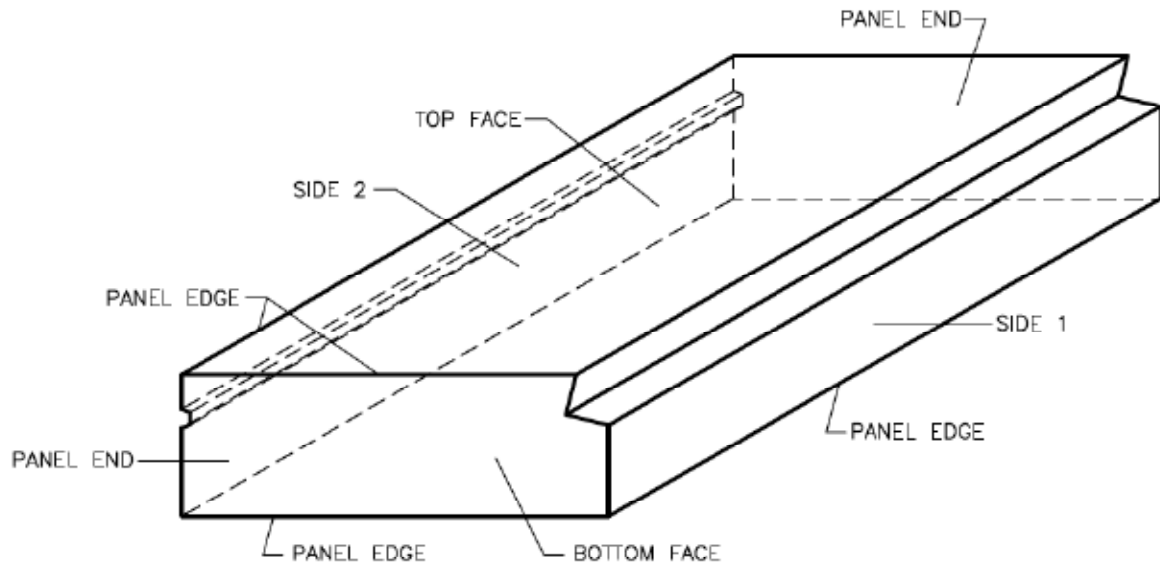
DETAIL 1.0 - ISOMETRIC, FLOOR PANELS ON HEBEL BLOCK SUPPORT



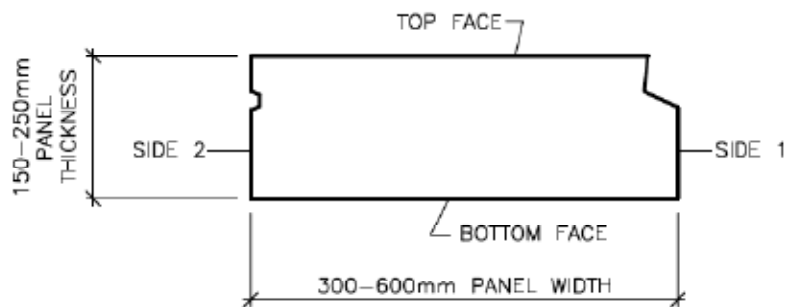
DETAIL 1.1 - ISOMETRIC, FLOOR PANELS ON MASONRY SUPPORT



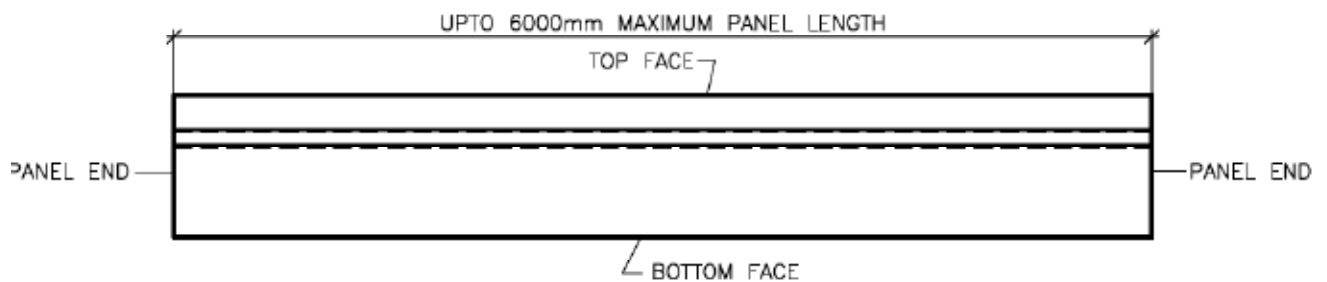
DETAIL 1.2 - ISOMETRIC, FLOOR PANELS ON STEEL SUPPORT



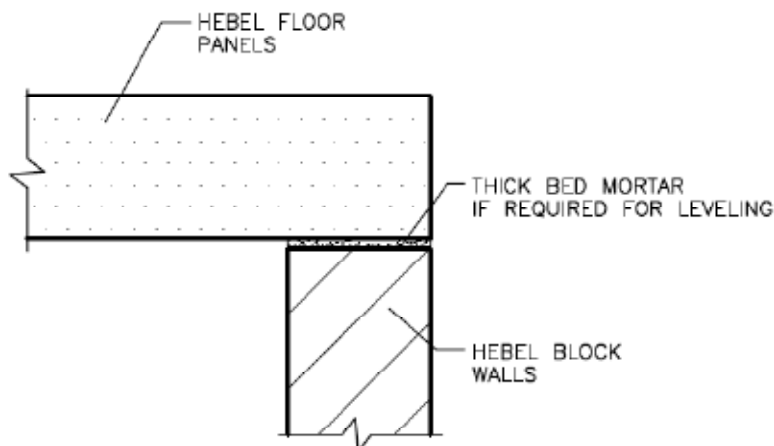
DETAIL 2.0 – FLOOR PANEL ISOMETRIC DETAIL



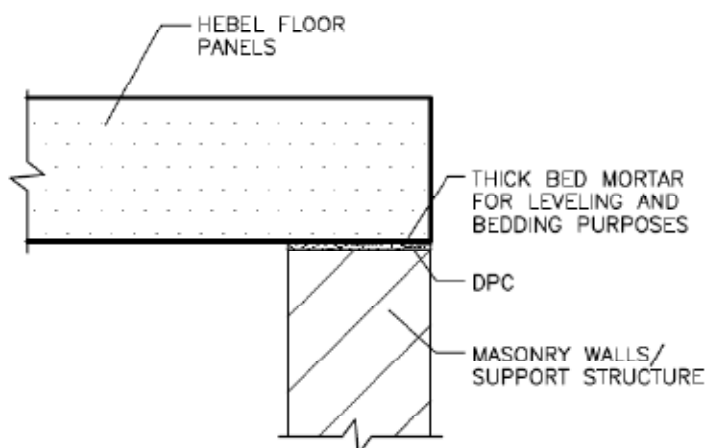
DETAIL 2.1 – FLOOR PANEL END VIEW DETAIL



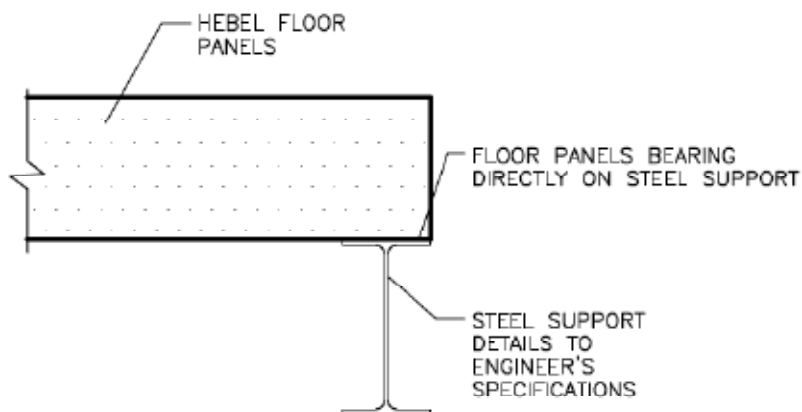
DETAIL 2.2 – FLOOR PANEL SIDE 1 VIEW DETAIL



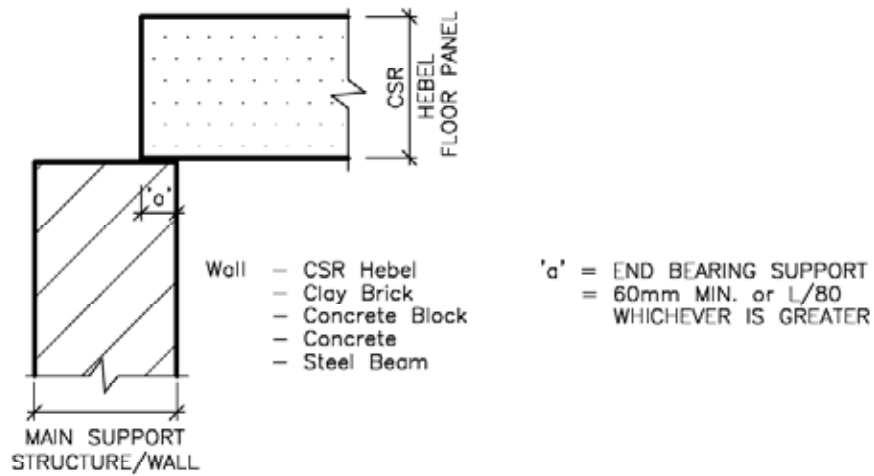
DETAIL 3.1 – HEBEL FLOOR PANEL BEARING ON HEBEL SUPPORT INTERACTION DETAIL



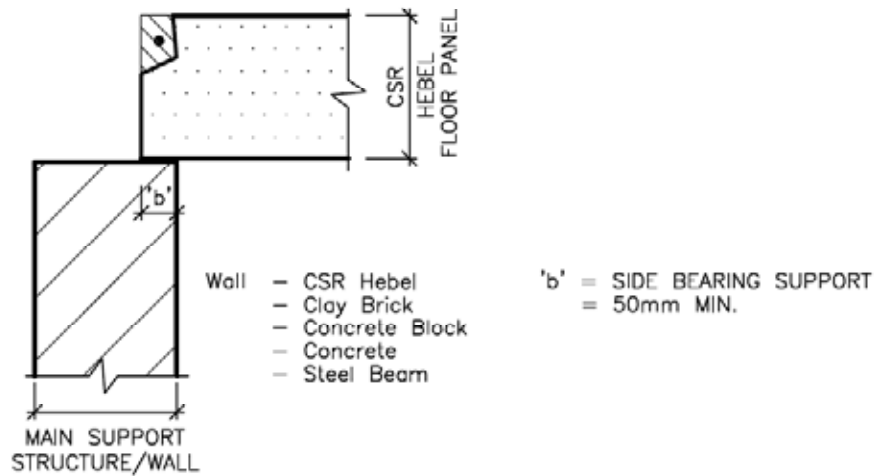
DETAIL 3.2 – HEBEL FLOOR PANEL BEARING ON MASONRY SUPPORT INTERACTION DETAIL



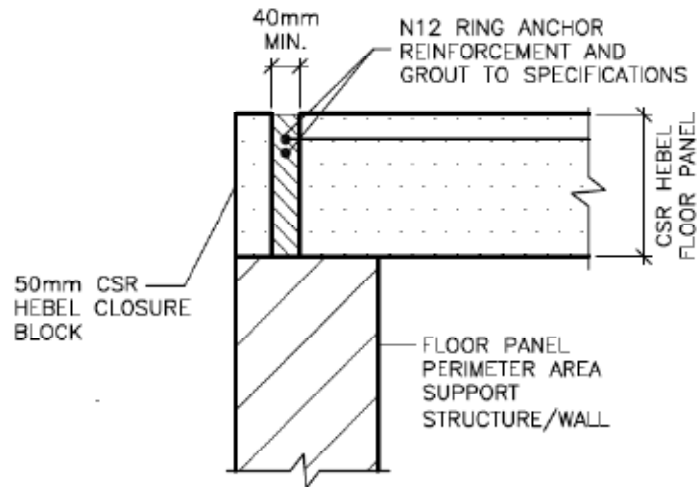
DETAIL 3.3 – HEBEL FLOOR PANEL BEARING ON STEEL SUPPORT INTERACTION DETAIL



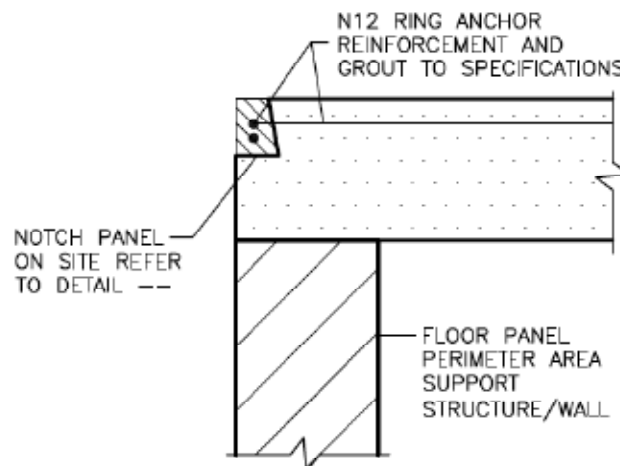
DETAIL 4.1 – PANEL END BEARING DETAILS



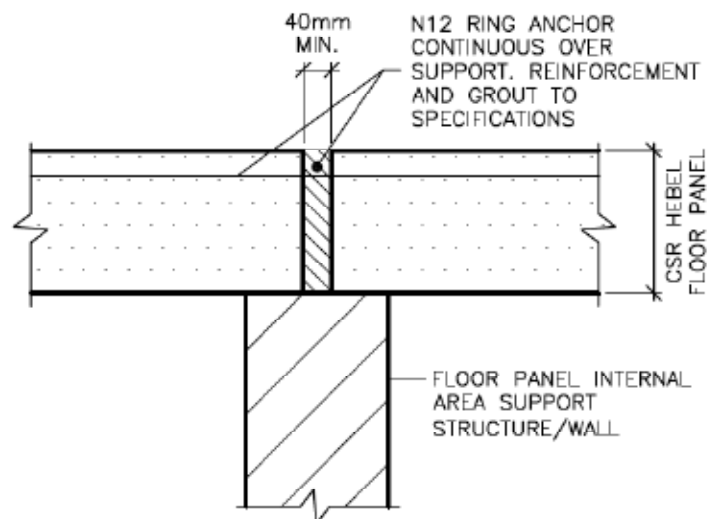
DETAIL 4.2 – PANEL SIDE BEARING DETAILS



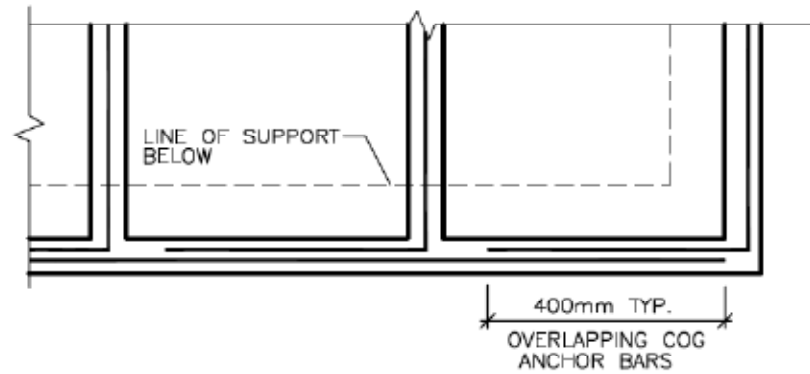
DETAIL 5.1 – FLOOR PANEL PERIMETER SUPPORT DETAIL-1



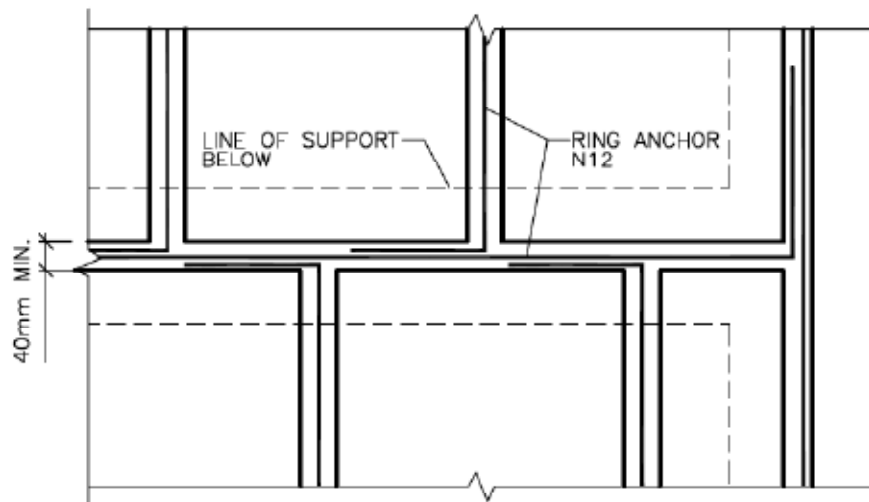
DETAIL 5.1.1 – FLOOR PANEL PERIMETER SUPPORT DETAIL-2



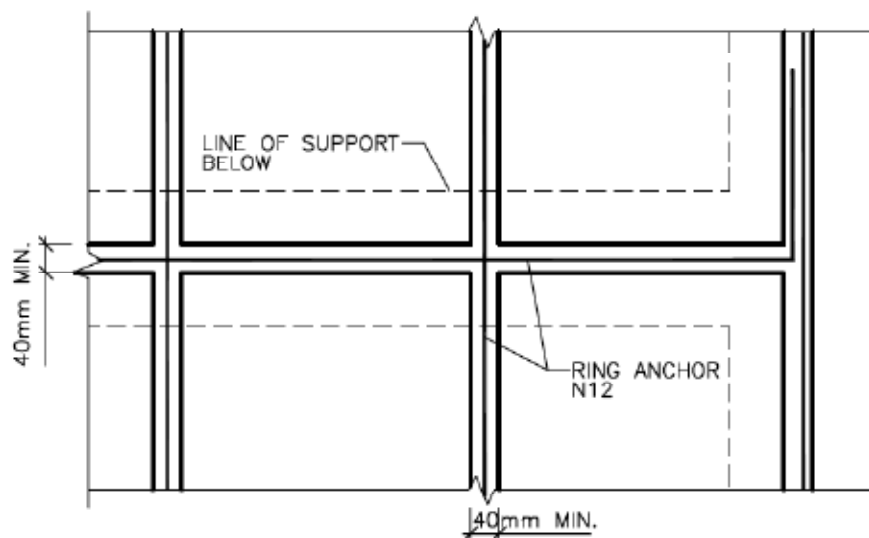
DETAIL 5.2 – FLOOR PANEL INTERNAL SUPPORT DETAIL



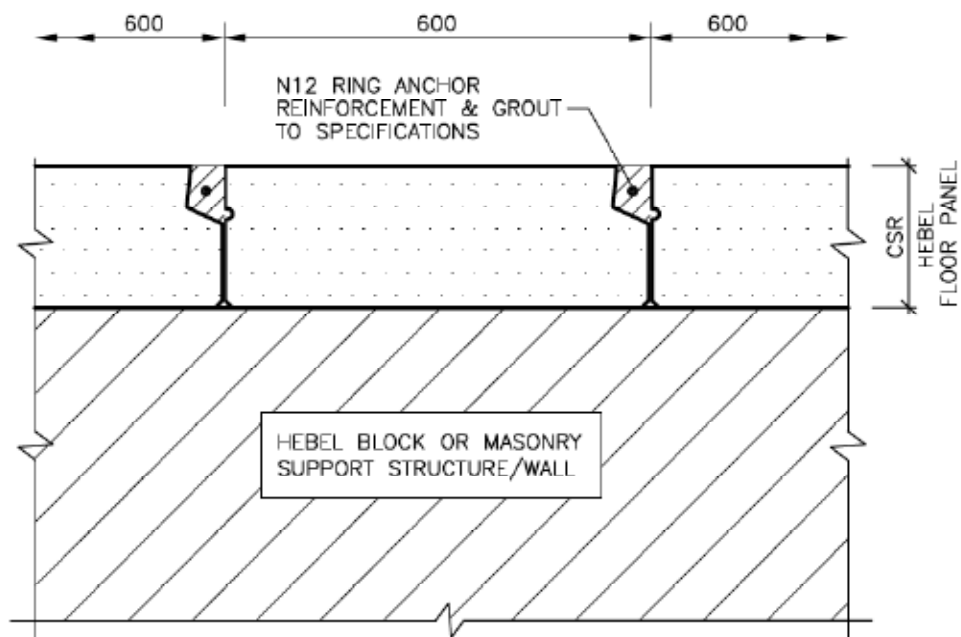
DETAIL 5.3 – TYPICAL CORNER RING ANCHOR SETOUT



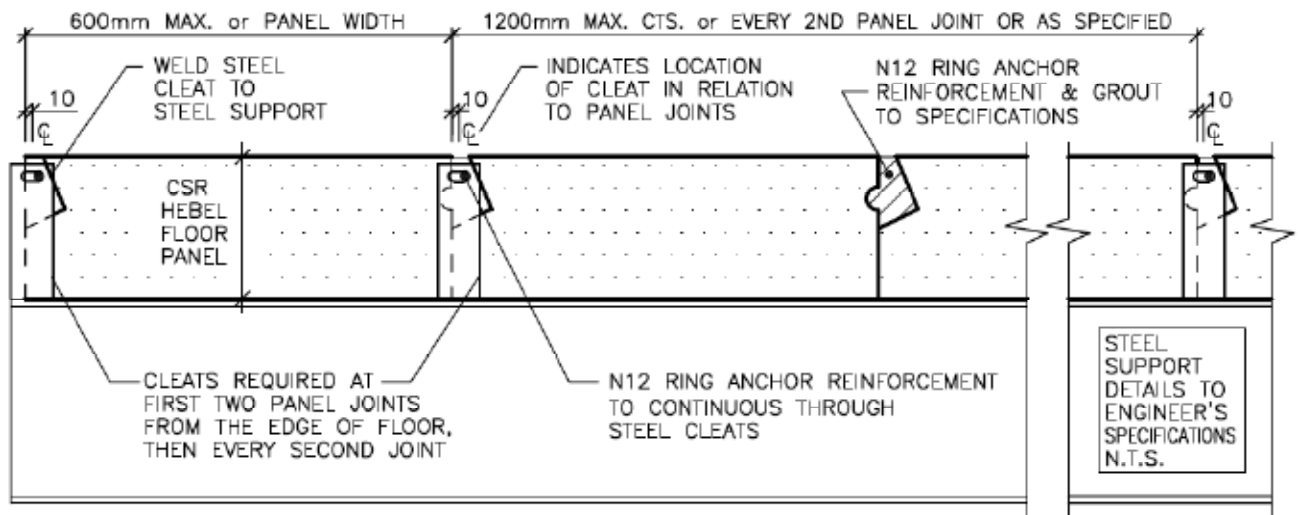
DETAIL 5.3.1 – SETOUT OF RING ANCHOR WITH PANELS STAGGERED



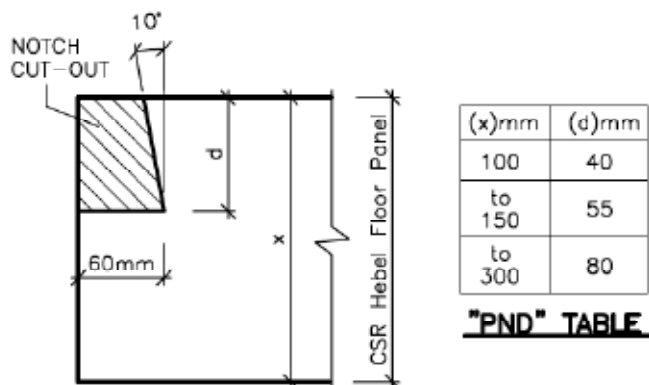
DETAIL 5.3.2 – SETOUT OF RING ANCHOR WITH ADJOINING PANELS



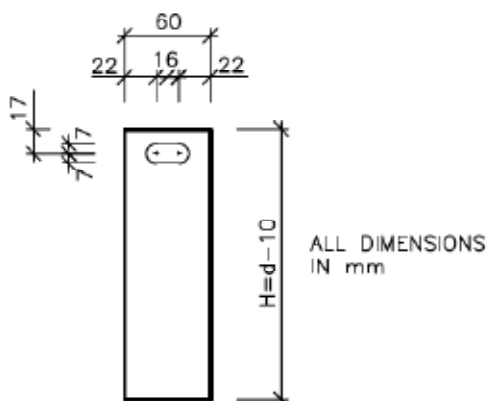
DETAIL 5.3.3 – RING ANCHOR REINFORCEMENT POSITIONING AND RESTRAINT OVER HEBEL OR MASONRY SUPPORTS – PANEL END VIEW



DETAIL 5.3.4 – RING ANCHOR REINFORCEMENT POSITIONING AND RESTRAINT OVER STEEL SUPPORTS – PANEL END VIEW

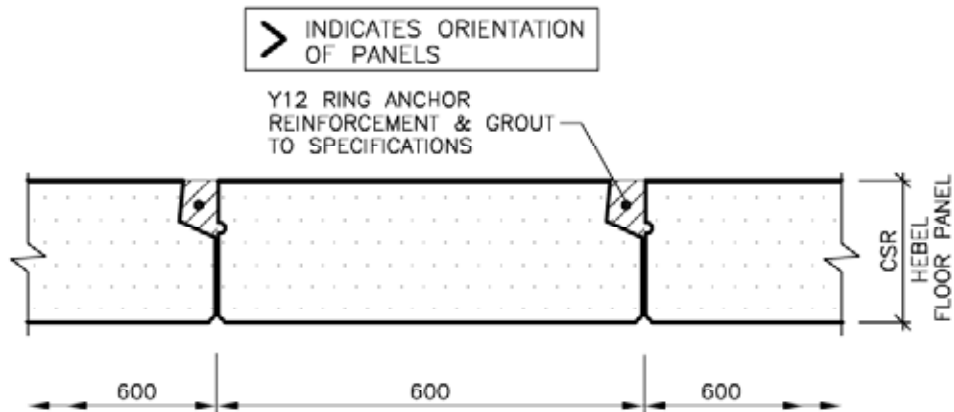


DETAIL 5.3.5 – RING ANCHOR SITE PANEL NOTCHING DETAIL (PND)
N.T.S.

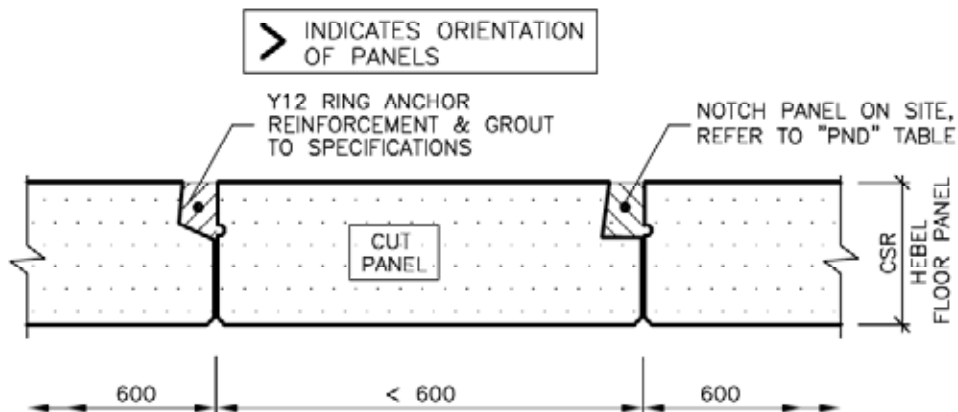


- NOTE: 1) ALL DIMENSIONS ARE IN mm
- 2) d = CSR HEBEL FLOOR PANEL DEPTH
- 3) WELD TO STEEL SUPPORT WITH 6mm CFW, ALL AROUND (CONTINUOUS FILLET WELD)

DETAIL 5.3.6 – RING ANCHOR STEEL CLEAT DETAIL "SCD" TYPICAL
N.T.S.



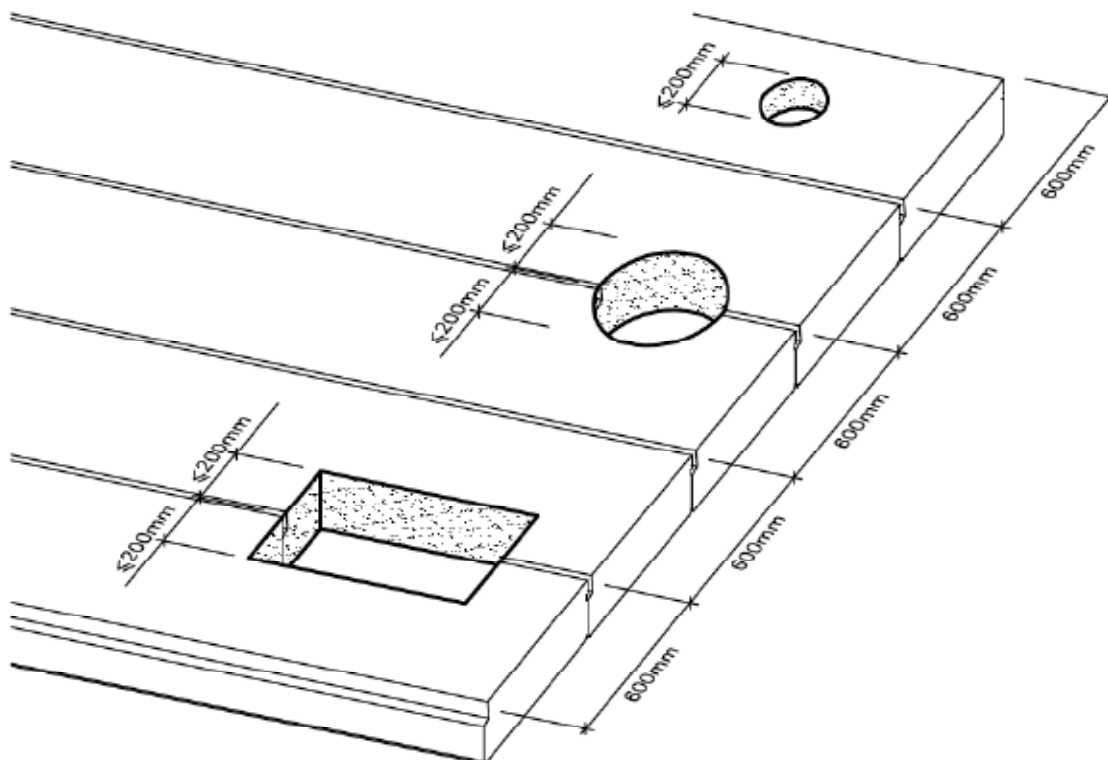
DETAIL 6.1 - GENERAL PANEL SECTION DETAIL-1



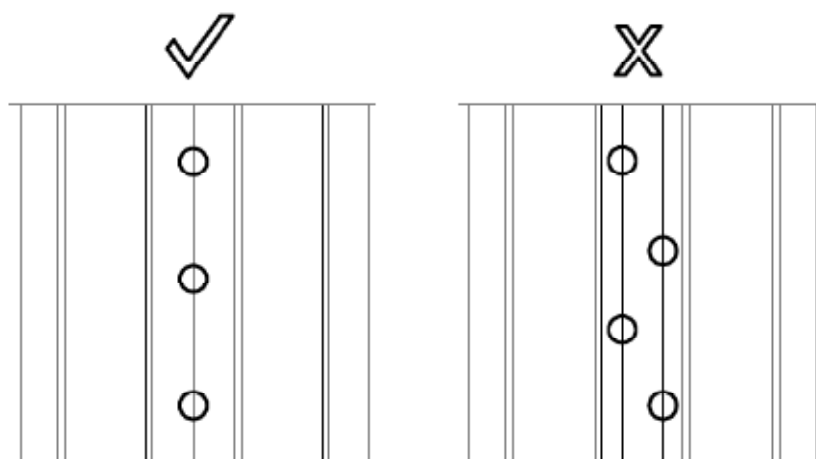
DETAIL 6.2 - GENERAL PANEL SECTION DETAIL-2

NOTE:

1. WIDTH OF OPENING TO BE LESS THAN ONE THIRD OF PANEL WIDTH, TO BE CUT ON SITE. ALL PANELS SHOWN ARE 600mm WIDE.
2. NOTCHES SHOULD NOT BE OVERCUT AS ADDITIONAL REINFORCEMENT MAY BE CUT WHICH COULD SIGNIFICANTLY REDUCE THE PANELS PERFORMANCE.



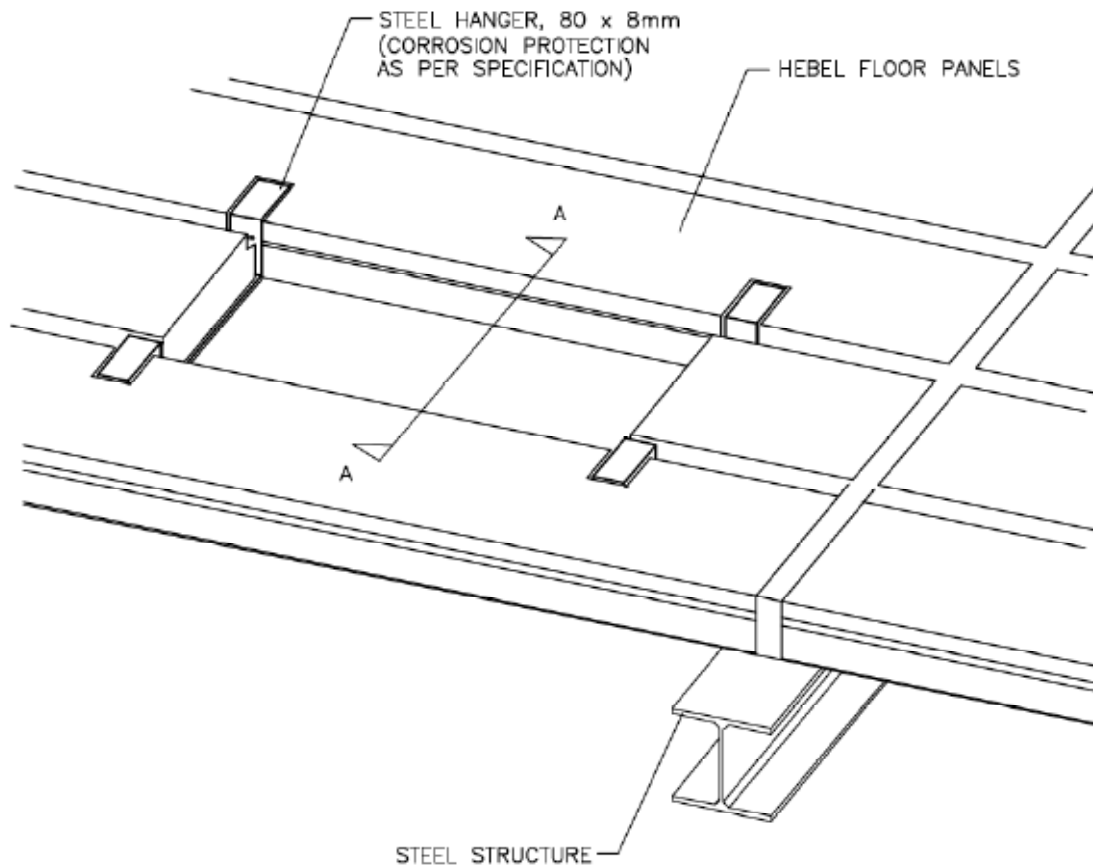
DETAIL 7.1 – PENETRATION POSITIONING AND SIZING DETAIL



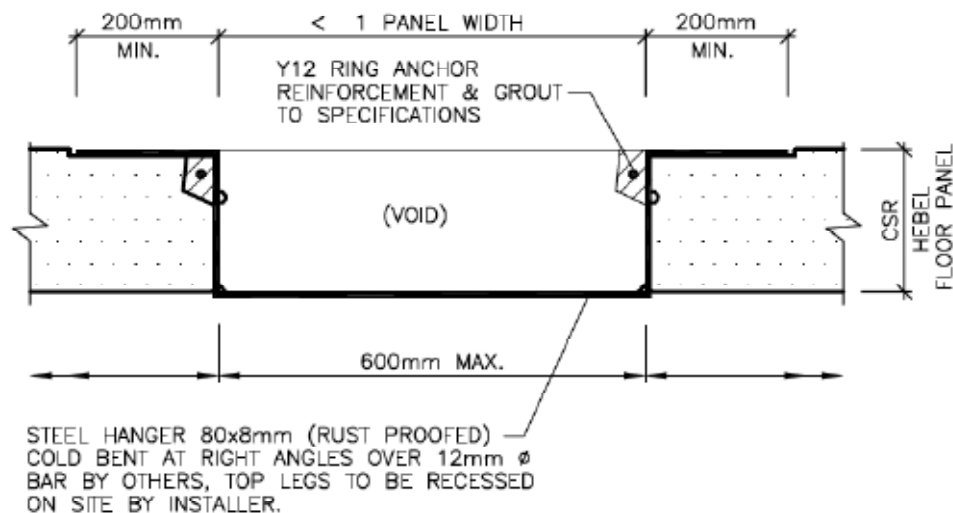
PLAN VIEW

NOTE: WHERE PENETRATIONS DO NOT ALIGN, CONTACT
CSR HEBEL ENGINEER FOR DESIGN ADVICE

DETAIL 7.1.1 – MULTIPLE PENETRATIONS LAYOUT DETAIL

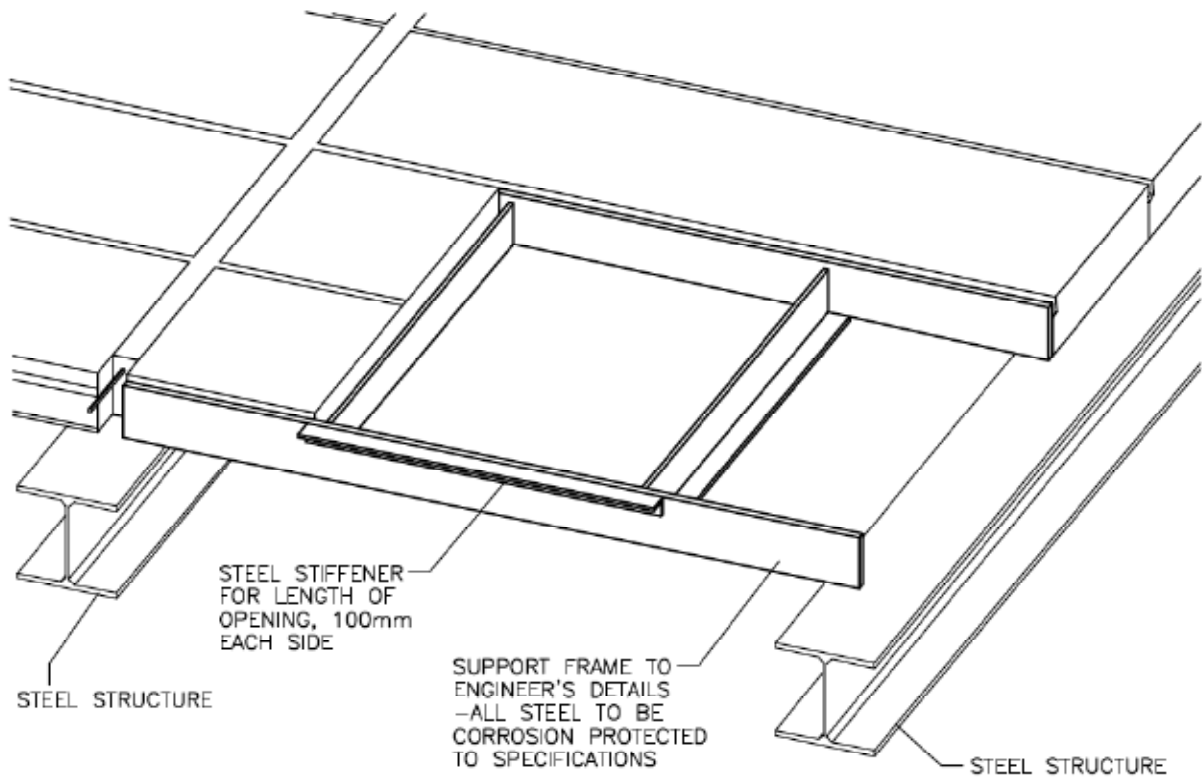


DETAIL 7.2 – SINGLE PANEL WIDTH OPENING – ISOMETRIC DETAIL

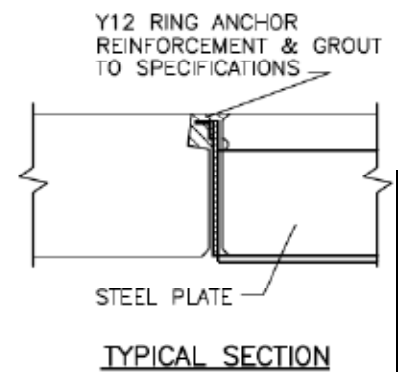
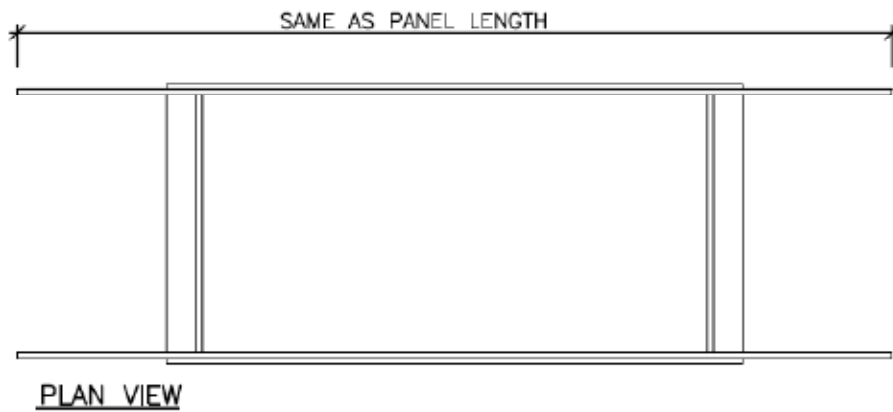


SECTION

DETAIL 7.2.1 – SINGLE PANEL WIDTH OPENING – SECTION "AA" DETAIL



DETAIL 7.3 – MULTI-PANEL WIDTH OPENINGS – ISOMETRIC DETAIL



DETAIL 7.3.1 – MULTI-PANEL WIDTH OPENINGS – SECTION DETAILS