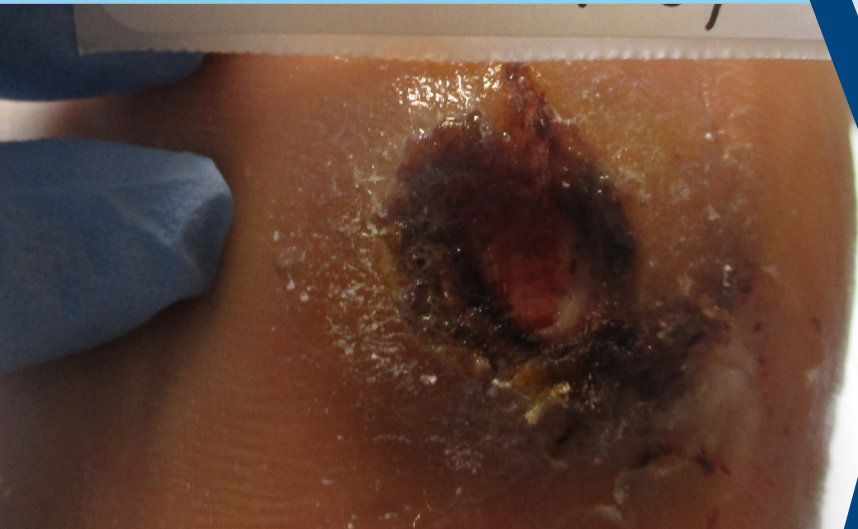


INITIAL PRESENTATION



This 65-year-old male with type II diabetes presented with a non-healing wound of the lateral edge of his left foot. He also has a history of chronic osteomyelitis. Due to the patient's moderate dementia, coordination of care with his caregivers included education on the importance of offloading, keeping the wound dry, and effective glucose control to promote optimal healing. After implementing advance wound care therapies the wound was healed in five weeks.

OUTCOME



Could HBOT be right for your patient?

Call today to consult with our physicians.

CALL US:
855-968-6301

FAX US:
855-968-6302

VISIT US ONLINE:
us-woundcare.com

Expert Care for Chronic, Non-Healing Wounds

CONDITIONS WE TREAT

Conditions include, but are not limited to:

- Diabetic Lower Extremity Wounds
- Arterial / Ischemic Ulcers
- Venous Stasis Ulcers
- Pressure Injuries
- Infected Wounds
- Radiation Injuries
- Compromised Flaps and Skin Grafts
- Necrotizing Infections/Fasciitis
- Minor Burns
- Atypical Skin Disorders
- Chronic Refractory Osteomyelitis
- Wounds caused by Trauma / Crush Injuries
- Any Complex or Non-Healing Wound

HYPERBARIC OXYGEN THERAPY INDICATIONS

COVERED CONDITIONS

FDA-approved indications, often covered by insurance, include, but are not limited to:

- Diabetic Lower Extremity Wounds
- Compromised Skin Graft or Flap Preservation
- Soft Tissue Radiation Injury
- Delayed Effect Radiation Injury
- Osteomyelitis
- Osteoradionecrosis
- Compartment Syndrome
- Crush Injuries
- Idiopathic Sudden Sensorineural Hearing Loss
- Central Retinal Artery Occlusion
- Non-Healing Surgical Wounds

CONVENIENTLY LOCATED

Our centers are conveniently located in multiple sites throughout the Dallas-Fort Worth metroplex.

LEWISVILLE

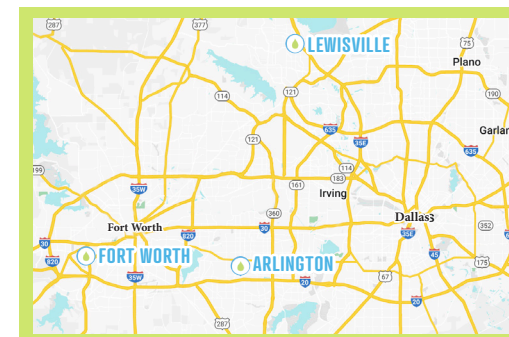
401 N. Valley Parkway, Suite 380
Lewisville, TX 75067
P: 469-904-6428
F: 469-904-6427

FORT WORTH

5668 Edwards Ranch Rd., Suite 101
Fort Worth, TX 76109
P: 817-764-1554
F: 817-764-1565

ARLINGTON

1001 West Arbrook Blvd., Suite 161
Arlington, TX 76015
P: 817-402-0952
F: 817-402-4773



**WE ACCEPT MEDICARE, WORKER'S COMPENSATION
AND MOST PRIVATE INSURANCE PLANS**