



2	ADDED -40-45 & -90-95, UPDATED FLAME RATING		Douglas French	7-29-2024	UNLESS OTHERWISE SPECIFIED: DIMENSIONS ARE IN: INCHES[mm] TOLERANCES: ANGULAR: ±2° TWO PLACE DECIMAL: ±.010 THREE PLACE DECIMAL: ±.005 PRINTED GRAPHICS: ±.010 PROPRIETARY AND CONFIDENTIAL THE INFORMATION CONTAINED IN THIS DRAWING IS THE SOLE PROPERTY OF POLYCASE. ANY REPRODUCTION IN PART OR AS A WHOLE WITHOUT THE WRITTEN PERMISSION OF POLYCASE IS PROHIBITED. CAD FILE: ZQ-060604	PART NO. ZQ-060604-13		 <small>1305 CHESTER RD. PARKWAY AVON, OHIO 44011-1083 U.S.A. PH: 1-800-248-1233 FAX: 1-314-304-1749 440-934-0088</small>		JUNCTION ENCLOSURE		REV 2			
1	added -90-95		Douglas French	4-16-2024		MATERIAL									
0			Douglas French	9-6-2022		FLAME RATING -		SIZE C							
REV.	COMMENT		ZONE	REVISED BY		MODIFICATION DATE	DRAWN CHECKED		NAME D.M.F.		DATE 1/24/2019 12/31/2999		SCALE: 1:2		 SHEET 1 OF 9
REVISIONS															

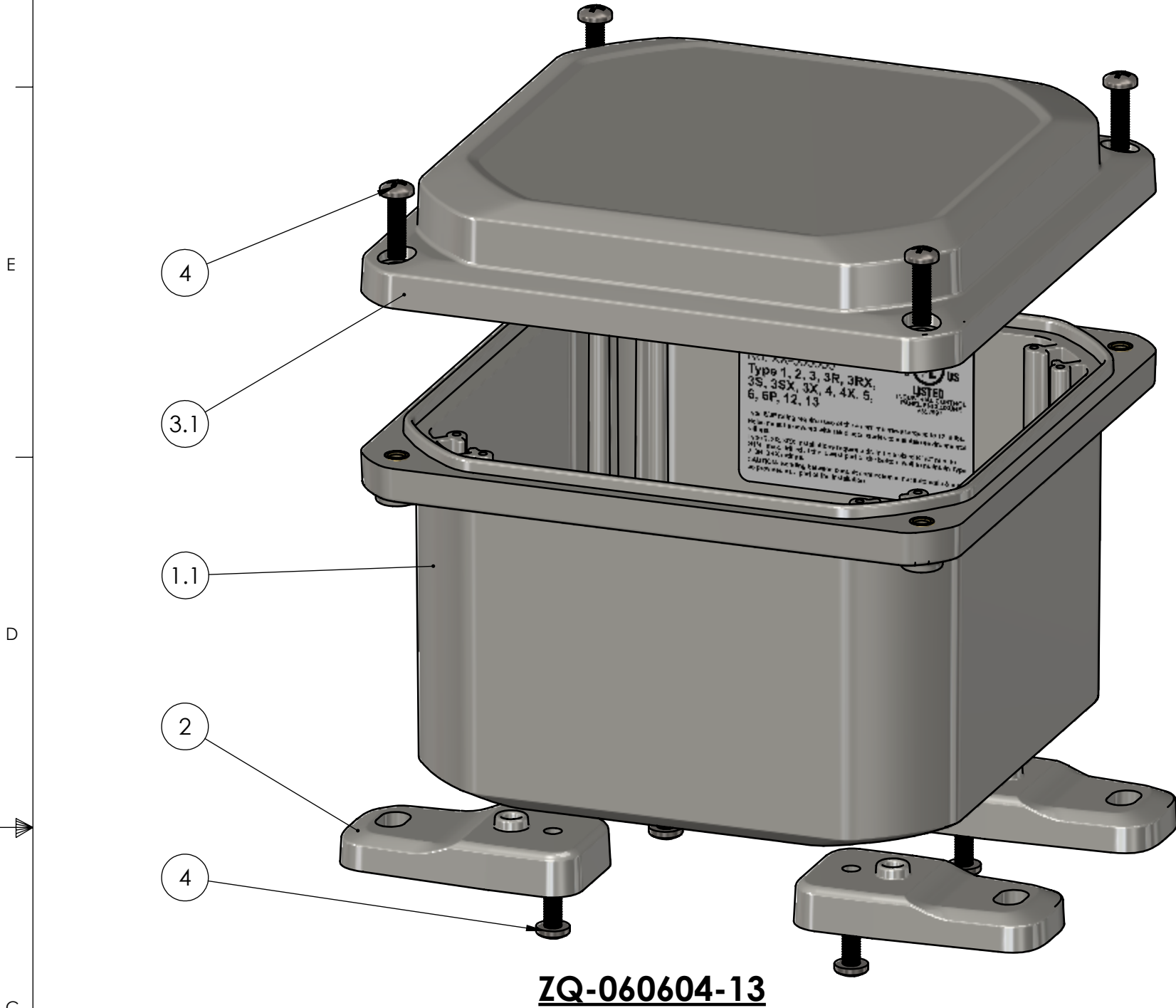
8

7

6

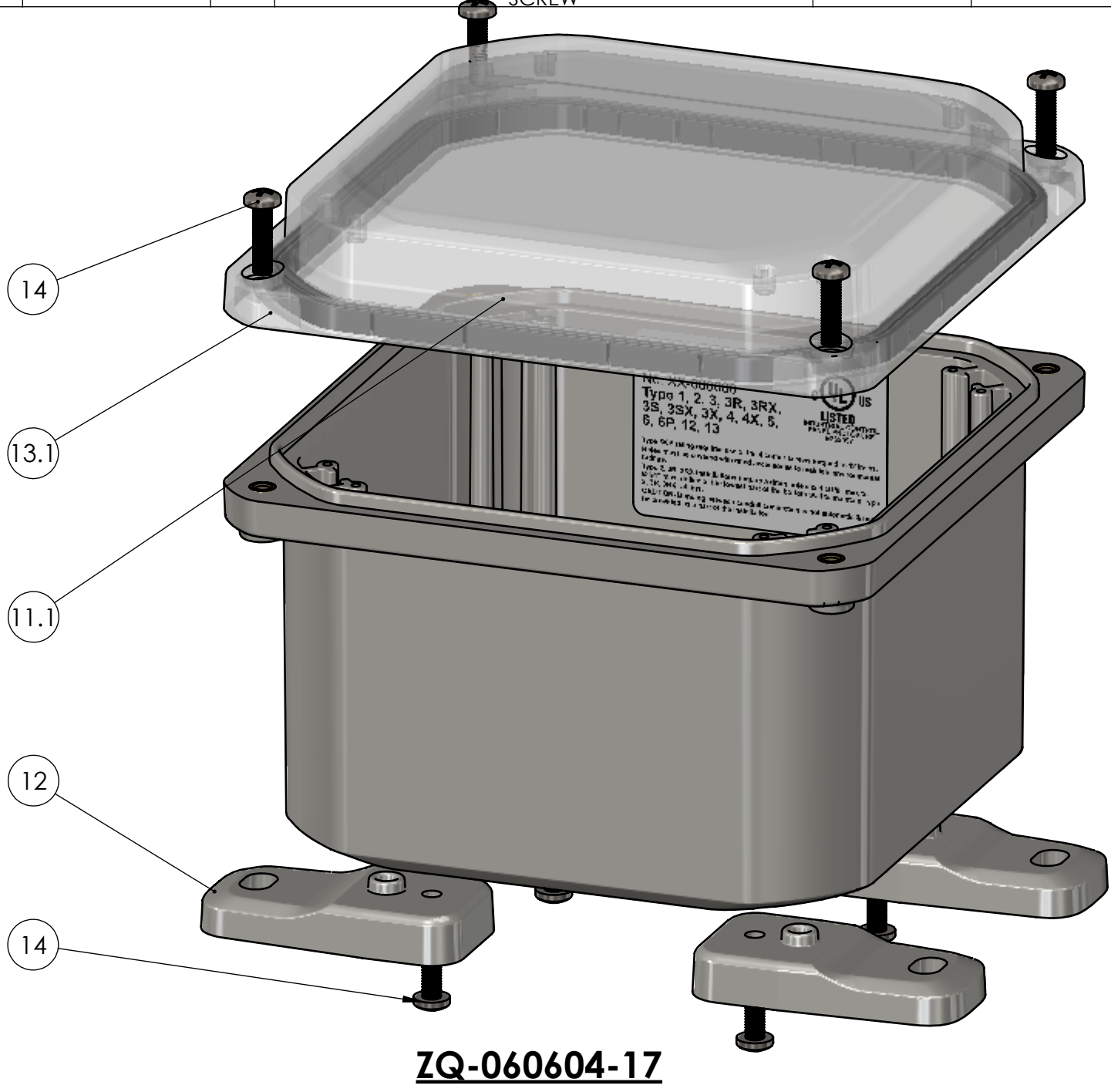
BOM Table							
ITEM NO.	PART NUMBER	Rev.	Description	Material	FlameRating	Color	QTY.
1	ZQ-06064BI-01	1					1
1.1	ZQ-06064B-01	1	BASE, JUNCTION	PC	UL94-5VA	GRAY	1
1.2	INSERTS-4	0	SELF-TAPPING INSERT: 10-32 UNF X .296 LG.	BRASS 360			12
1.3	LABEL-104	0	UL LABEL				1
2	ZH-01F-01	2	MOUNTING FOOT	PC	UL94-5VA	LIGHT GRAY	4
3	ZQ-06061CG-01	1	HINGED COVER W/GASKET				1
3.1	ZQ-06061C-01	1	COVER, JUNCTION	PC	UL94-5VA	LIGHT GRAY	1
3.2	ZH-0606G	0	GASKET	NEOPRENE		BLACK	1
4	SCREWS-046	1.1	#10-32 X .75 PAN HEAD, PHILLIPS, 316SS, MACHINE SCREW				8

F



ZQ-060604-13

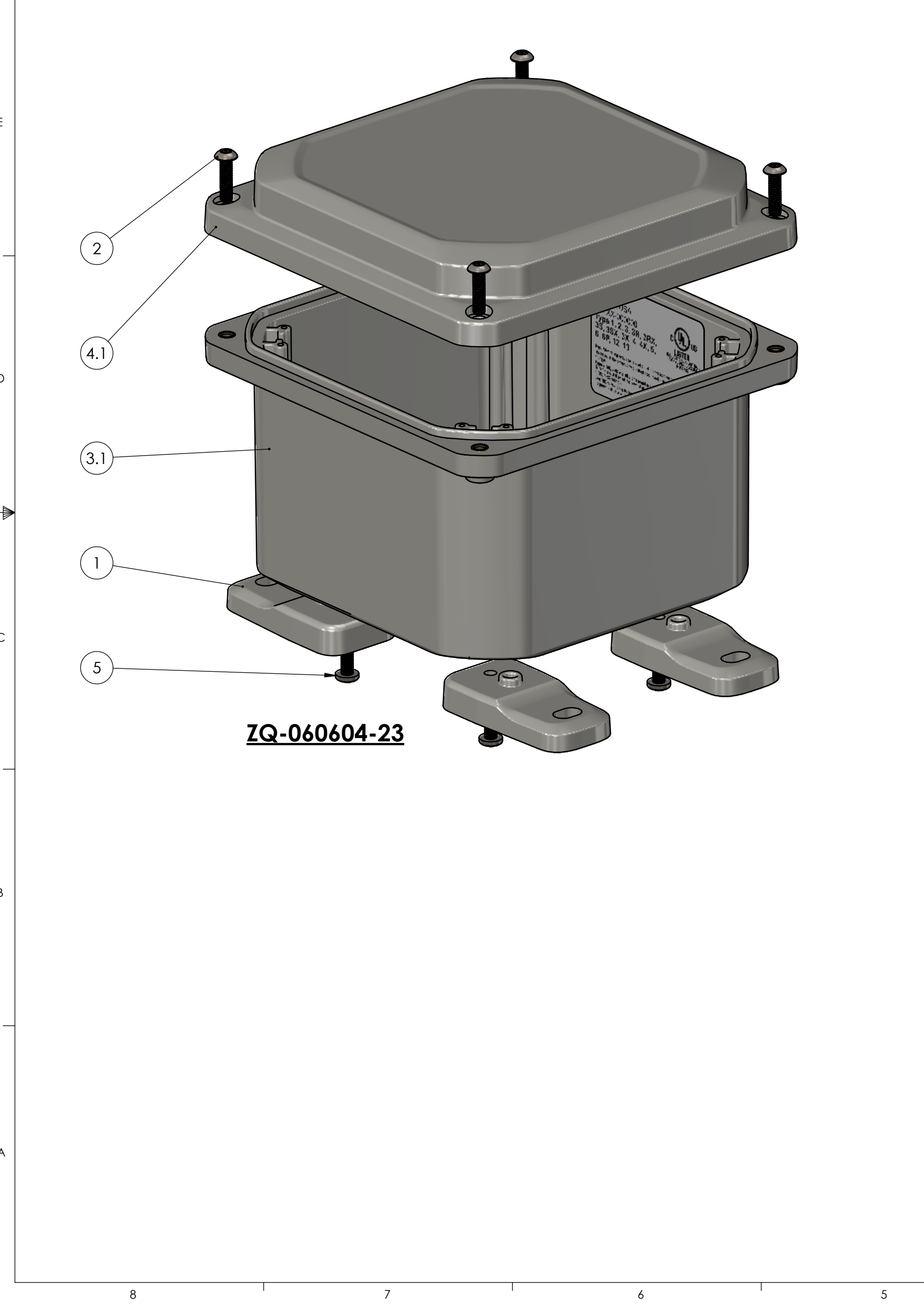
BOM Table							
ITEM NO.	PART NUMBER	Rev.	Description	Material	FlameRating	Color	QTY.
11	ZQ-06064BI-01	1					1
11.1	ZQ-06064B-01	1	BASE, JUNCTION	PC	UL94-5VA	GRAY	1
11.2	INSERTS-4	0	SELF-TAPPING INSERT: 10-32 UNF X .296 LG.	BRASS 360			12
11.3	LABEL-104	0	UL LABEL				1
12	ZH-01F-01	2	MOUNTING FOOT	PC	UL94-5VA	LIGHT GRAY	4
13	ZQ-06061CG-02	1					1
13.1	ZQ-06061C-02	1	COVER, JUNCTION	PC	UL94V-0	CLEAR	1
13.2	ZH-0606G	0	GASKET	NEOPRENE		BLACK	1
14	SCREWS-046	1.1	#10-32 X .75 PAN HEAD, PHILLIPS, 316SS, MACHINE SCREW				8



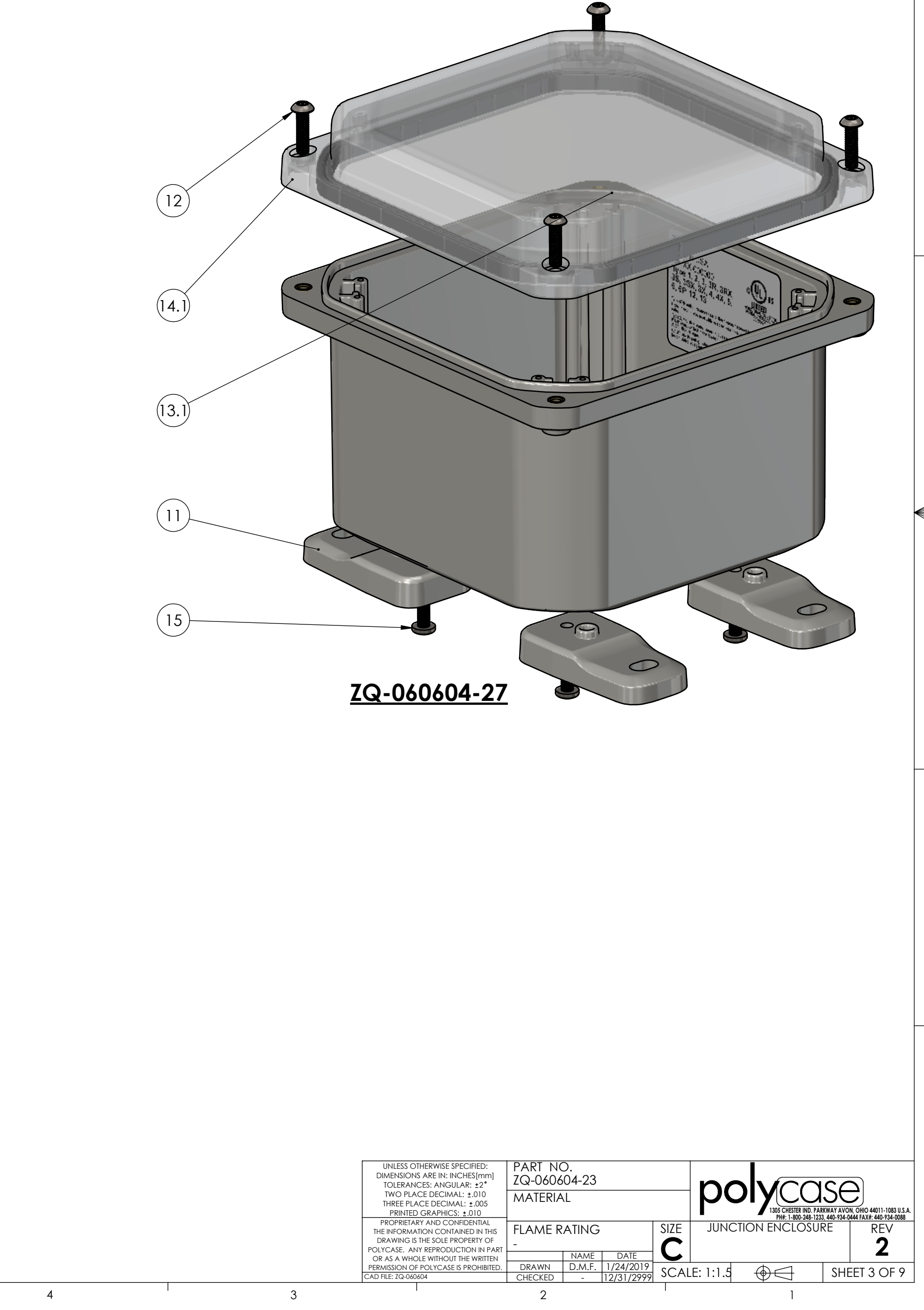
ZQ-060604-17

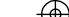
UNLESS OTHERWISE SPECIFIED: DIMENSIONS ARE IN: INCHES[mm] TOLERANCES: ANGULAR: ±2° TWO PLACE DECIMAL: ±.010 THREE PLACE DECIMAL: ±.005 PRINTED GRAPHICS: ±.010		PART NO. ZQ-060604-13		<div>polycase</div> <div>1305 CHESTER RD. PARKWAY AVON, OHIO 44011-1083 U.S.A. PH: 1-800-268-1233 440-934-0444 FAX: 440-934-0088</div>										
PROPRIETARY AND CONFIDENTIAL THE INFORMATION CONTAINED IN THIS DRAWING IS THE SOLE PROPERTY OF POLYCASE. ANY REPRODUCTION IN PART OR AS A WHOLE WITHOUT THE WRITTEN PERMISSION OF POLYCASE IS PROHIBITED. CAD FILE: ZQ-060604		MATERIAL												
FLAME RATING -		SIZE C		JUNCTION ENCLOSURE										
<table><tr><td>DRAWN</td><td>NAME</td><td>DATE</td></tr><tr><td>CHECKED</td><td>D.M.F.</td><td>1/24/2019</td></tr><tr><td></td><td></td><td>12/31/2999</td></tr></table>		DRAWN	NAME	DATE	CHECKED	D.M.F.	1/24/2019			12/31/2999	SCALE: 1:1.5		REV 2	
DRAWN	NAME	DATE												
CHECKED	D.M.F.	1/24/2019												
		12/31/2999												
				SHEET 2 OF 9										

8		7		6		5	
BOM Table							
ITEM NO.	PART NUMBER	Rev.	Description	Material	FlameRating	Color	QTY
1	ZH-01F-01	2	MOUNTING FOOT	PC	UL94-5VA	LIGHT GRAY	4
2	SCREWS-047	0	#10-32 X .75 TAMPER-RESIST TORX BUTTON-HEAD SCREW	304SS			4
3	ZQ-06064BI-01	1					1
3.1	ZQ-06064B-01	1	BASE, JUNCTION	PC	UL94-5VA	GRAY	1
3.2	INSERTS-4	0	SELF-TAPPING INSERT: 10-32 UNF X .296 LG.	BRASS 360			12
3.3	LABEL-104	0	UL LABEL				1
4	ZQ-06061CG-01	1	HINGED COVER W/GASKET				1
4.1	ZQ-06061C-01	1	COVER, JUNCTION	PC	UL94-5VA	LIGHT GRAY	1
4.2	ZH-0606G	0	GASKET	NEOPRENE		BLACK	1
5	SCREWS-046	1.1	#10-32 X .75 PAN HEAD, PHILLIPS, 316SS, MACHINE SCREW				4

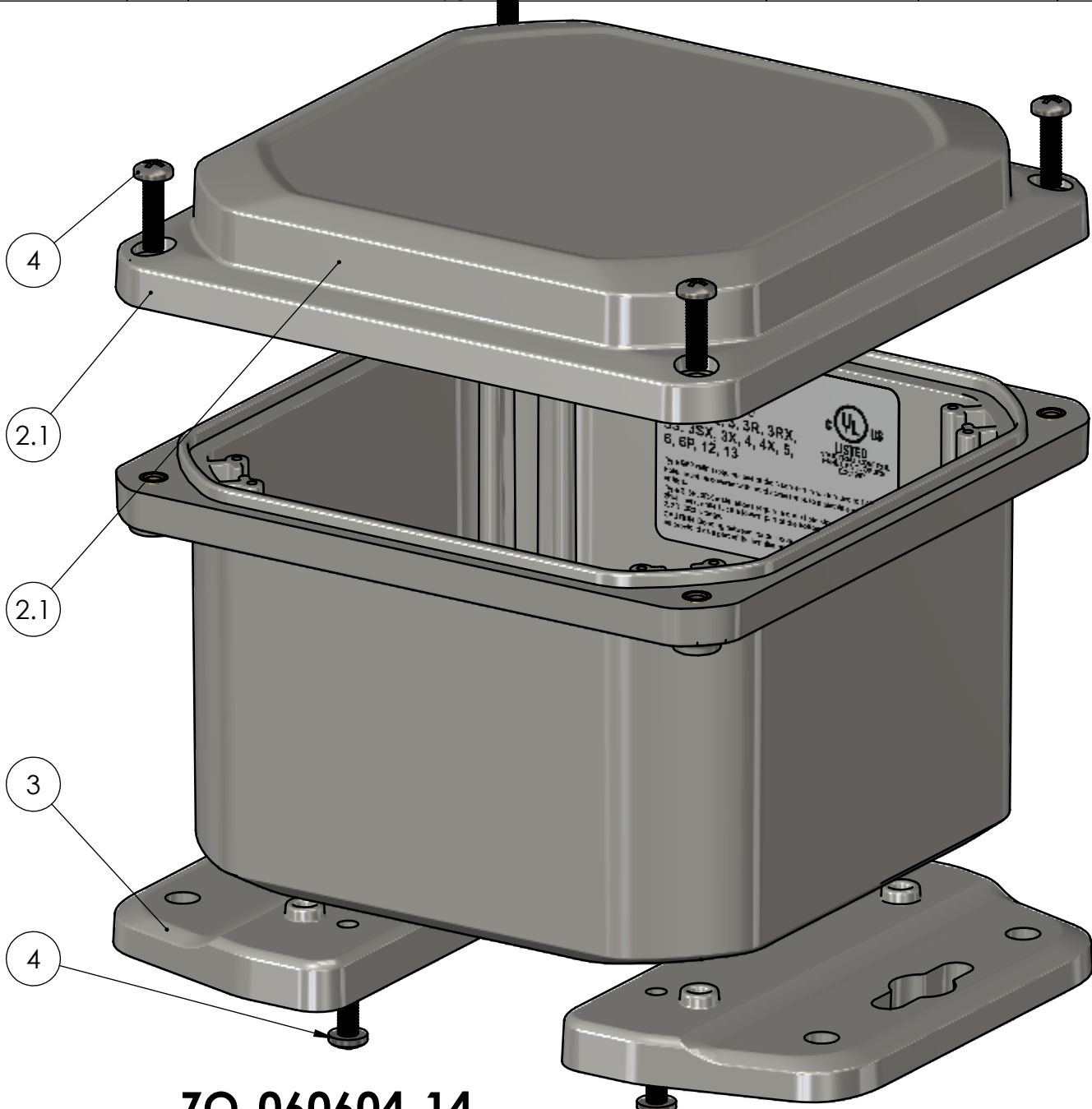


4		3		2		1	
BOM Table							
ITEM NO.	PART NUMBER	Rev.	Description	Material	FlameRating	Color	QTY.
11	ZH-01F-01	2	MOUNTING FOOT	PC	UL94-5VA	LIGHT GRAY	4
12	SCREWS-047	0	#10-32 X .75 TAMPER-RESIST TORX BUTTON-HEAD SCREW	304SS			4
13	ZQ-06064BI-01	1					1
13.1	ZQ-06064B-01	1	BASE, JUNCTION	PC	UL94-5VA	GRAY	1
13.2	INSERTS-4	0	SELF-TAPPING INSERT: 10-32 UNF X .296 LG.	BRASS 360			12
13.3	LABEL-104	0	UL LABEL				1
14	ZQ-06061CG-02	1					1
14.1	ZQ-06061C-02	1	COVER, JUNCTION	PC	UL94V-0	CLEAR	1
14.2	ZH-0606G	0	GASKET	NEOPRENE		BLACK	1
15	SCREWS-046	1.1	#10-32 X .75 PAN HEAD, PHILLIPS, 316SS, MACHINE SCREW				4

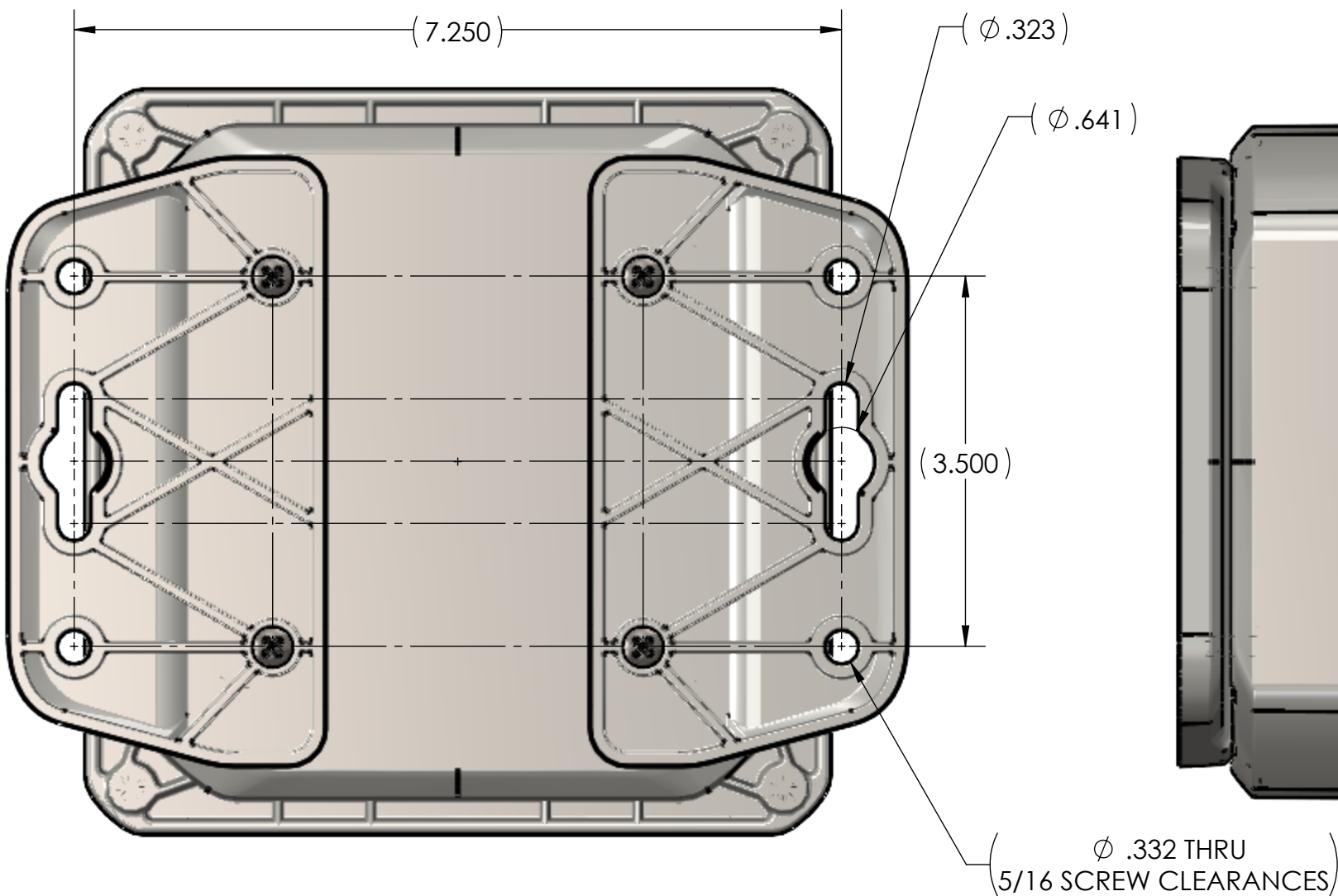


UNLESS OTHERWISE SPECIFIED: DIMENSIONS ARE IN: INCHES[mm] TOLERANCES: ANGULAR: ±2° TWO PLACE DECIMAL: ±.010 THREE PLACE DECIMAL: ±.005 PRINTED GRAPHICS: ±.010 PROPRIETARY AND CONFIDENTIAL THE INFORMATION CONTAINED IN THIS DRAWING IS THE SOLE PROPERTY OF POLYCASE. ANY REPRODUCTION IN PART OR AS A WHOLE WITHOUT THE WRITTEN PERMISSION OF POLYCASE IS PROHIBITED. CAD FILE: ZQ-060604		PART NO. ZQ-060604-23		<div>polycase</div> <div>1305 CHESTER RD. PARKWAY AVON, OHIO 44011-1083 U.S.A. PH: 1-800-268-1233 440-934-0444 FAX: 440-934-0088</div>			
		MATERIAL					
		FLAME RATING -		SIZE C	JUNCTION ENCLOSURE	REV 2	
		DRAWN CHECKED	NAME D.M.F.				DATE 1/24/2019 12/31/2999
		SCALE: 1:1.5					

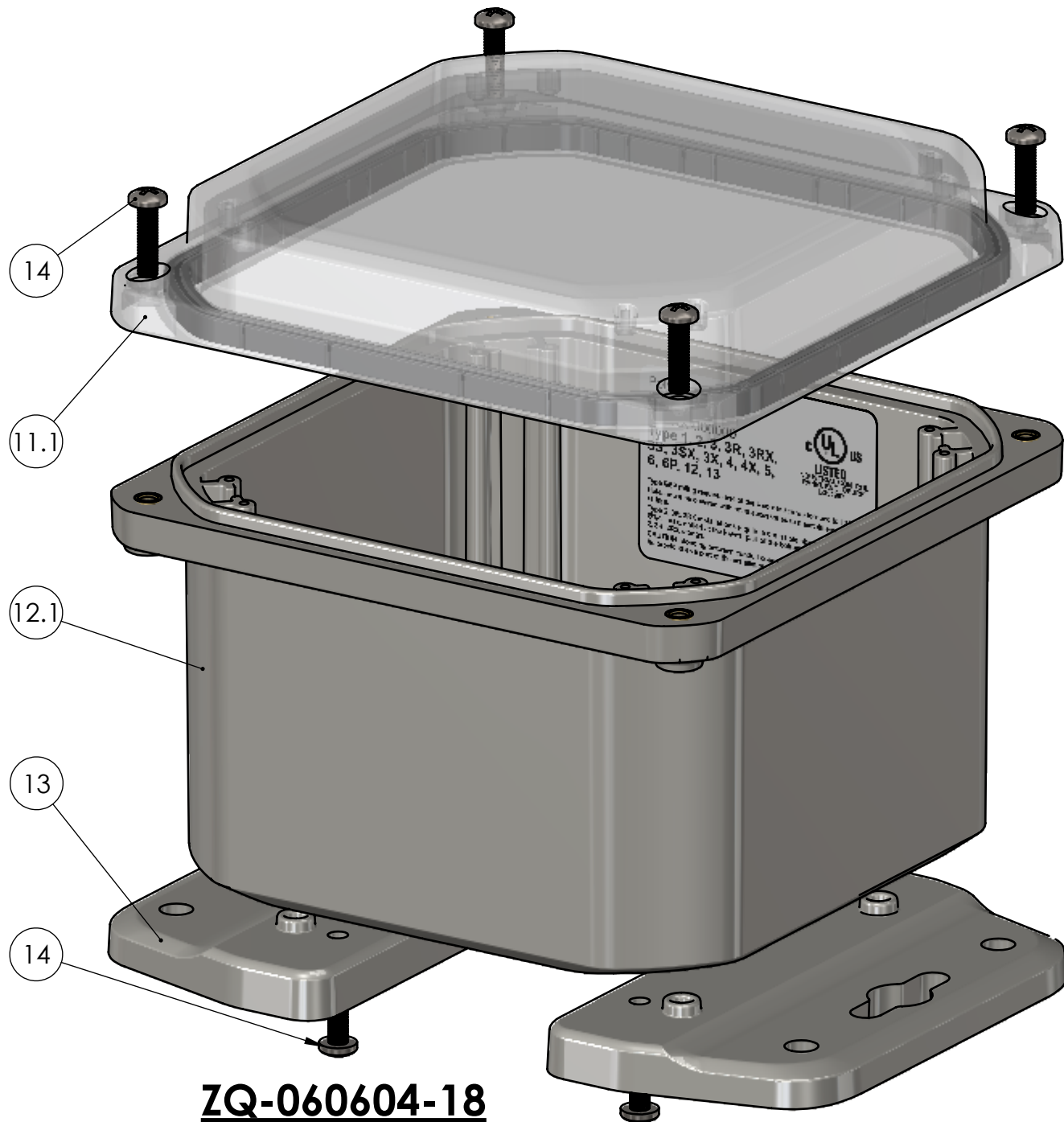
8		7		6		5	
BOM Table							
ITEM NO.	PART NUMBER	Rev.	Description	Material	FlameRating	Color	QTY
1	ZQ-06064BI-01	1					1
1.1	ZQ-06064B-01	1	BASE, JUNCTION	PC	UL94-5VA	GRAY	1
1.2	INSERTS-4	0	SELF-TAPPING INSERT: 10-32 UNF X .296 LG.	BRASS 360			12
1.3	LABEL-104	0	UL LABEL				1
2	ZQ-06061CG-01	1	HINGED COVER W/GASKET				1
2.1	ZQ-06061C-01	1	COVER, JUNCTION	PC	UL94-5VA	LIGHT GRAY	1
2.2	ZH-0606G	0	GASKET	NEOPRENE		BLACK	1
3	ZH-06F-01	1	MOUNTING FLANGE	PC	UL94-5VA	LIGHT GRAY	2
4	SCREWS-046	1.1	#10-32 X .75 PAN HEAD, PHILLIPS, 316SS, MACHINE SCREW				8



ZQ-060604-14



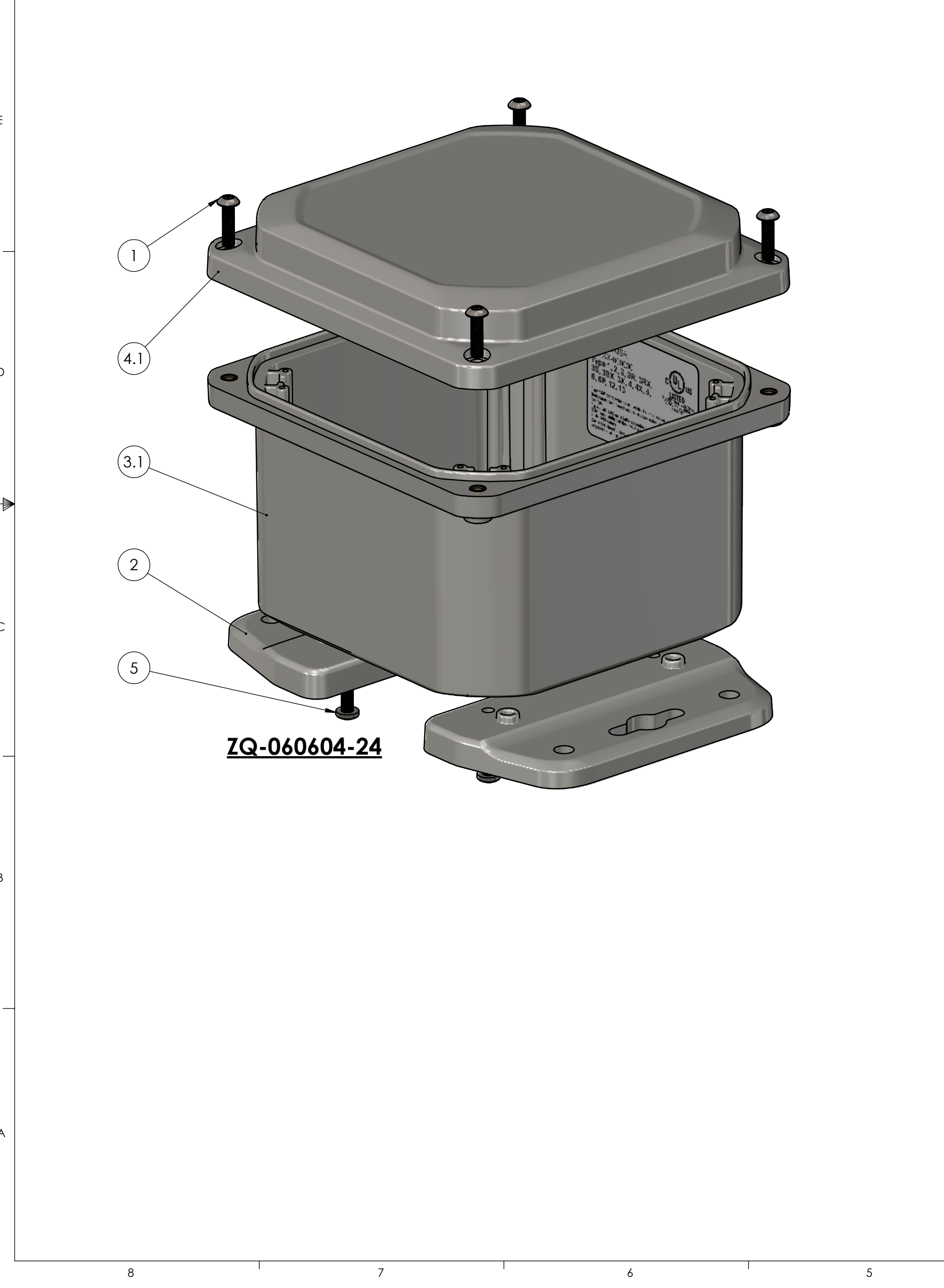
BOM Table							
ITEM NO.	PART NUMBER	Rev.	Description	Material	FlameRating	Color	QTY.
11	ZQ-06061CG-02	1					1
11.1	ZQ-06061C-02	1	COVER, JUNCTION	PC	UL94V-0	CLEAR	1
11.2	ZH-0606G	0	GASKET	NEOPRENE		BLACK	1
12	ZQ-06064BI-01	1					1
12.1	ZQ-06064B-01	1	BASE, JUNCTION	PC	UL94-5VA	GRAY	1
12.2	INSERTS-4	0	SELF-TAPPING INSERT: 10-32 UNF X .296 LG.	BRASS 360			12
12.3	LABEL-104	0	UL LABEL				1
13	ZH-06F-01	1	MOUNTING FLANGE	PC	UL94-5VA	LIGHT GRAY	2
14	SCREWS-046	1.1	#10-32 X .75 PAN HEAD, PHILLIPS, 316SS, MACHINE SCREW				8



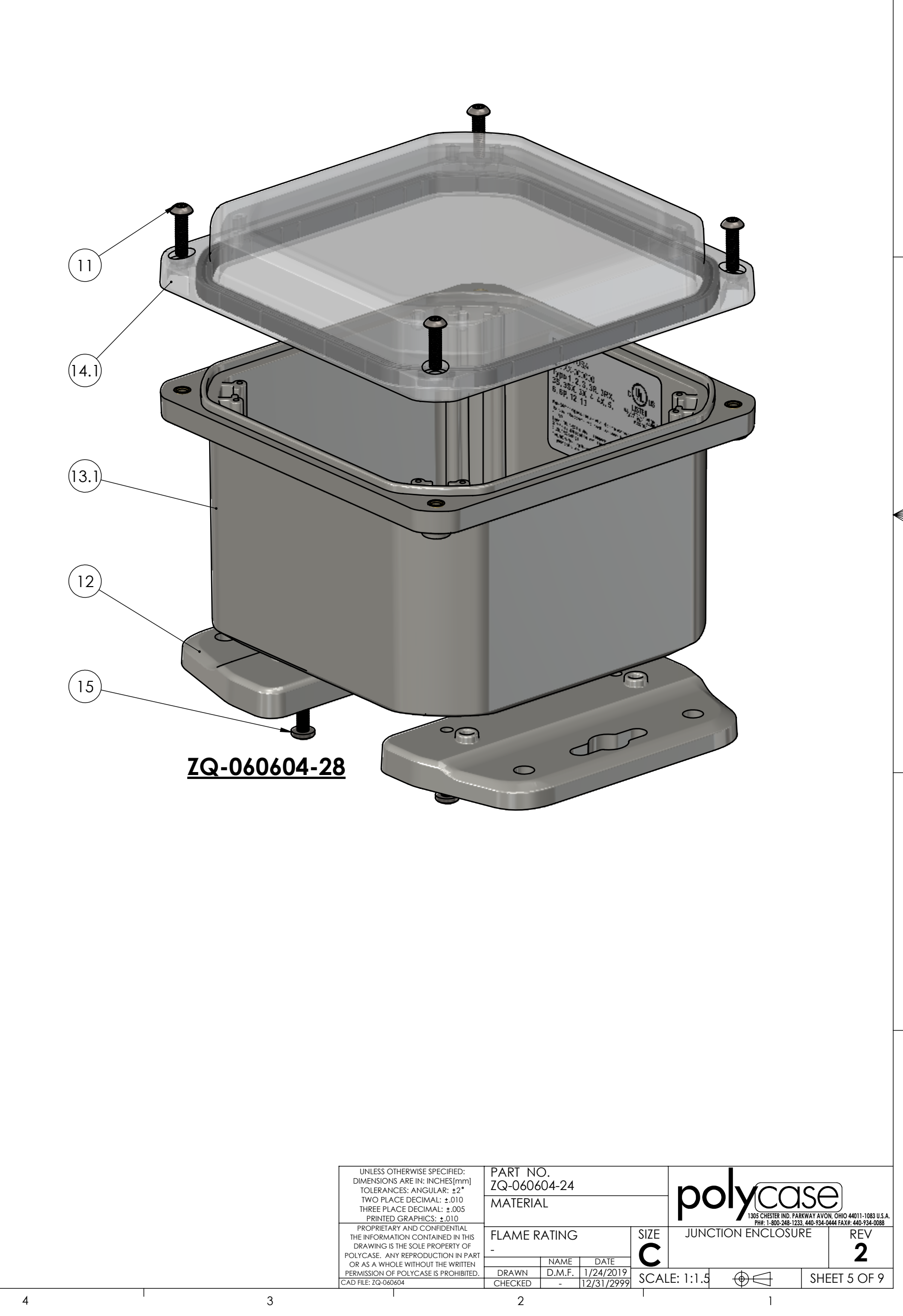
ZQ-060604-18

UNLESS OTHERWISE SPECIFIED: DIMENSIONS ARE IN: INCHES[mm] TOLERANCES: ANGULAR: ±2° TWO PLACE DECIMAL: ±.010 THREE PLACE DECIMAL: ±.005 PRINTED GRAPHICS: ±.010		PART NO. ZQ-060604-14		MATERIAL		polycase 1305 CHESTER RD. PARKWAY AVON, OHIO 44011-1083 U.S.A. PH: 1-800-268-1233 440-934-0444 FAX: 440-934-0088	
PROPRIETARY AND CONFIDENTIAL THE INFORMATION CONTAINED IN THIS DRAWING IS THE SOLE PROPERTY OF POLYCASE. ANY REPRODUCTION IN PART OR AS A WHOLE WITHOUT THE WRITTEN PERMISSION OF POLYCASE IS PROHIBITED. CAD FILE: ZQ-060604		FLAME RATING -		SIZE C	JUNCTION ENCLOSURE		REV 2
DRAWN CHECKED		NAME D.M.F.	DATE 1/24/2019	SCALE: 1:1.5		SHEET 4 OF 9	

8		7		6		5	
BOM Table							
ITEM NO.	PART NUMBER	Rev.	Description	Material	FlameRating	Color	QTY
1	SCREWS-047	0	#10-32 X .75 TAMPER-RESIST TORX BUTTON-HEAD SCREW	304SS			4
2	ZH-06F-01	1	MOUNTING FLANGE	PC	UL94-5VA	LIGHT GRAY	2
3	ZQ-06064BI-01	1					1
3.1	ZQ-06064B-01	1	BASE, JUNCTION	PC	UL94-5VA	GRAY	1
3.2	INSERTS-4	0	SELF-TAPPING INSERT: 10-32 UNF X .296 LG.	BRASS 360			12
3.3	LABEL-104	0	UL LABEL				1
4	ZQ-06061CG-01	1	HINGED COVER W/GASKET				1
4.1	ZQ-06061C-01	1	COVER, JUNCTION	PC	UL94-5VA	LIGHT GRAY	1
4.2	ZH-0606G	0	GASKET	NEOPRENE		BLACK	1
5	SCREWS-046	1.1	#10-32 X .75 PAN HEAD, PHILLIPS, 316SS, MACHINE SCREW				4

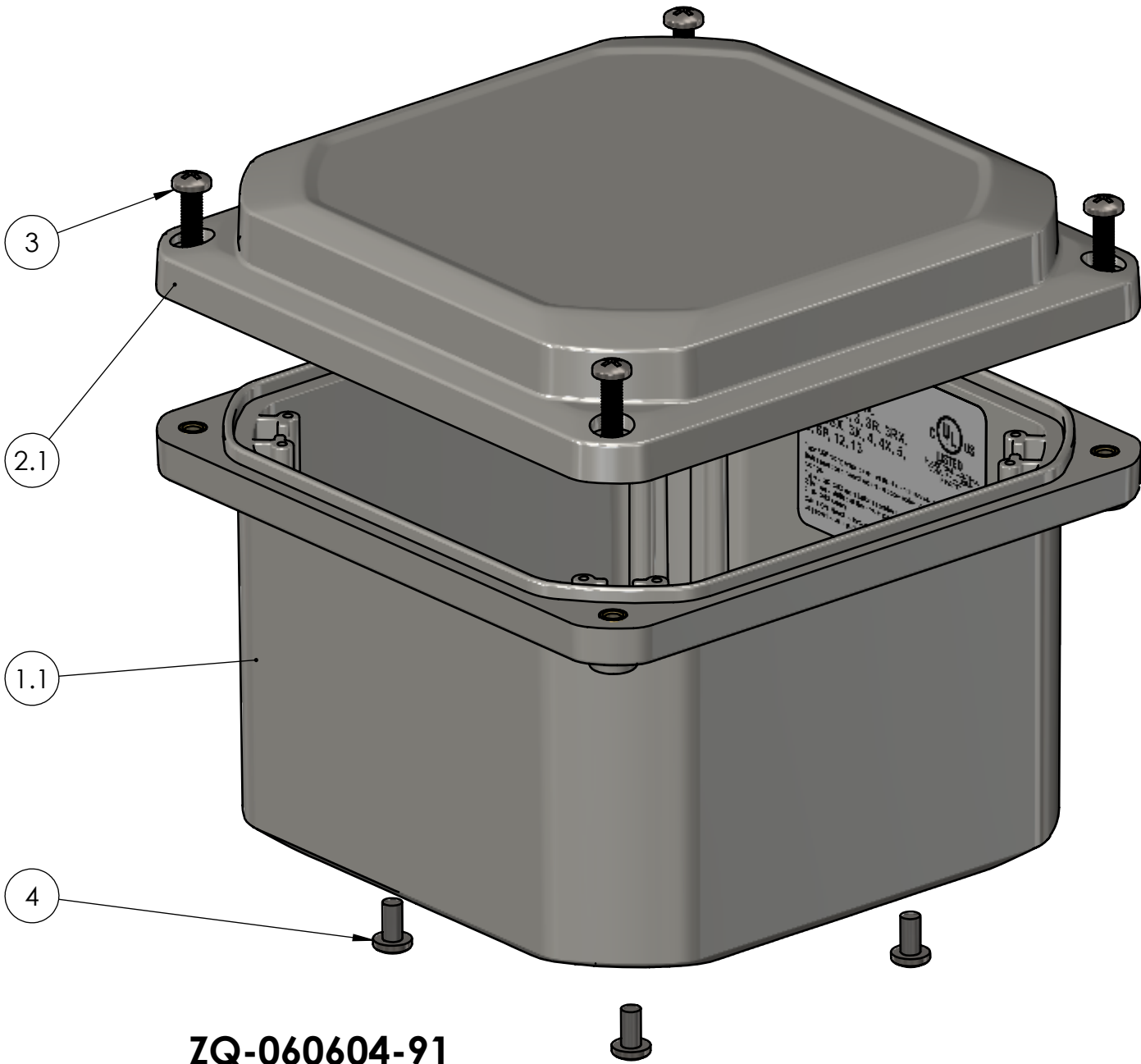


4		3		2		1	
BOM Table							
ITEM NO.	PART NUMBER	Rev.	Description	Material	FlameRating	Color	QTY.
11	SCREWS-047	0	#10-32 X .75 TAMPER-RESIST TORX BUTTON-HEAD SCREW	304SS			4
12	ZH-06F-01	1	MOUNTING FLANGE	PC	UL94-5VA	LIGHT GRAY	2
13	ZQ-06064BI-01	1					1
13.1	ZQ-06064B-01	1	BASE, JUNCTION	PC	UL94-5VA	GRAY	1
13.2	INSERTS-4	0	SELF-TAPPING INSERT: 10-32 UNF X .296 LG.	BRASS 360			12
13.3	LABEL-104	0	UL LABEL				1
14	ZQ-06061CG-02	1					1
14.1	ZQ-06061C-02	1	COVER, JUNCTION	PC	UL94V-0	CLEAR	1
14.2	ZH-0606G	0	GASKET	NEOPRENE		BLACK	1
15	SCREWS-046	1.1	#10-32 X .75 PAN HEAD, PHILLIPS, 316SS, MACHINE SCREW				4



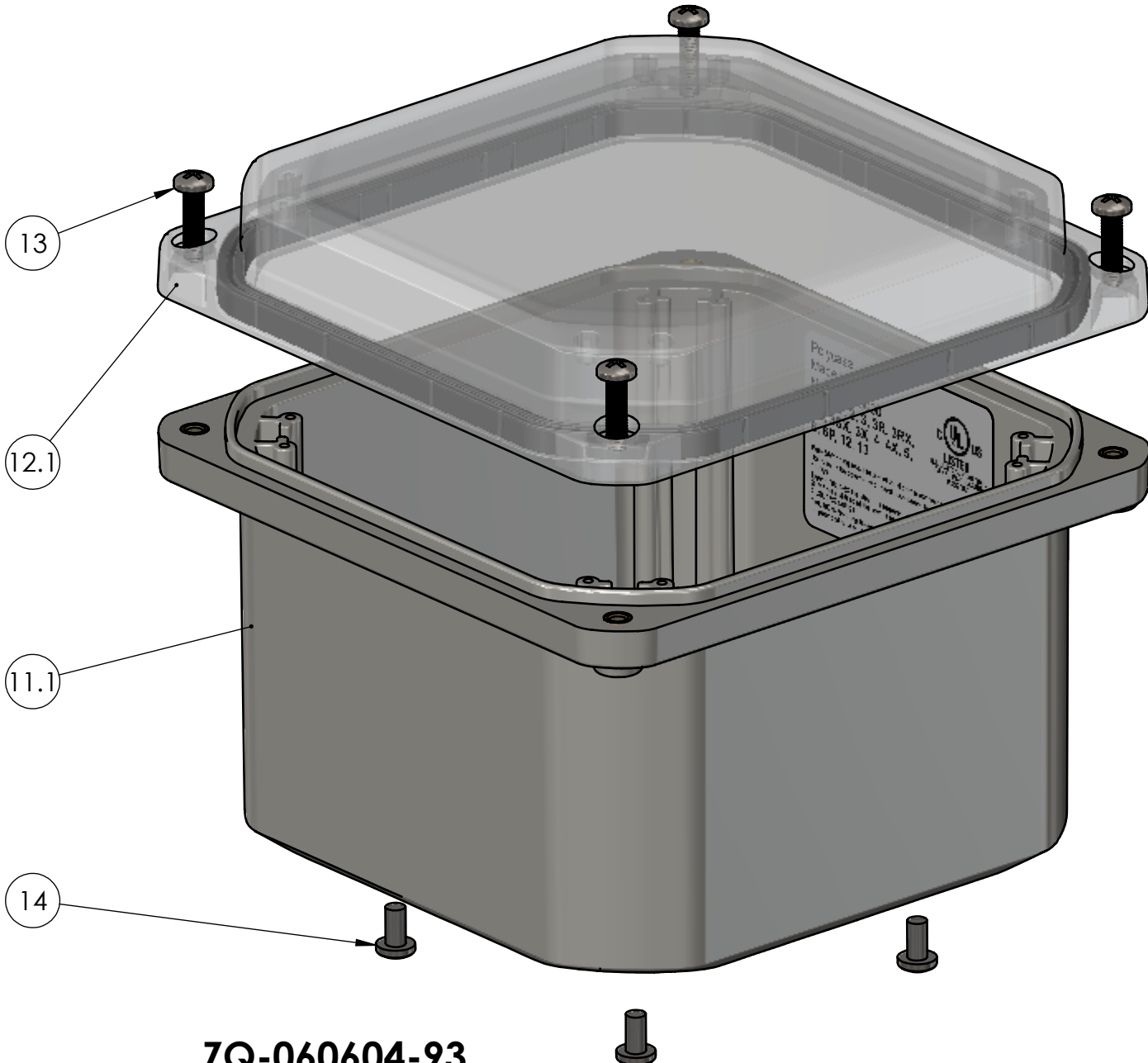
<div>UNLESS OTHERWISE SPECIFIED: DIMENSIONS ARE IN: INCHES[mm] TOLERANCES: ANGULAR: ±2° TWO PLACE DECIMAL: ±.010 THREE PLACE DECIMAL: ±.005 PRINTED GRAPHICS: ±.010</div> <div>PROPRIETARY AND CONFIDENTIAL THE INFORMATION CONTAINED IN THIS DRAWING IS THE SOLE PROPERTY OF POLYCASE. ANY REPRODUCTION IN PART OR AS A WHOLE WITHOUT THE WRITTEN PERMISSION OF POLYCASE IS PROHIBITED. CAD FILE: ZQ-060604</div>	PART NO. ZQ-060604-24		<div><div>polycase</div><div>1305 CHESTER RD. PARKWAY AVON, OHIO 44011-1083 U.S.A. PH: 1-800-268-1233 440-934-0444 FAX: 440-934-0088</div></div>								
	MATERIAL										
	FLAME RATING -		SIZE C	JUNCTION ENCLOSURE	REV 2						
	<table><tr><td>DRAWN</td><td>NAME D.M.F.</td><td>DATE 1/24/2019</td></tr><tr><td>CHECKED</td><td></td><td>12/31/2999</td></tr></table>					DRAWN	NAME D.M.F.	DATE 1/24/2019	CHECKED		12/31/2999
	DRAWN	NAME D.M.F.				DATE 1/24/2019					
CHECKED		12/31/2999									
SCALE: 1:1.5											
			SHEET 5 OF 9								

8		7		6		5	
BOM Table							
ITEM NO.	PART NUMBER	Rev.	Description	Material	FlameRating	Color	QTY.
1	ZQ-06064BI-01	1					1
1.1	ZQ-06064B-01	1	BASE, JUNCTION	PC	UL94-5VA	GRAY	1
1.2	INSERTS-4	0	SELF-TAPPING INSERT: 10-32 UNF X .296 LG.	BRASS 360			12
1.3	LABEL-104	0	UL LABEL				1
2	ZQ-06061CG-01	1	HINGED COVER W/GASKET				1
2.1	ZQ-06061C-01	1	COVER, JUNCTION	PC	UL94-5VA	LIGHT GRAY	1
2.2	ZH-0606G	0	GASKET	NEOPRENE		BLACK	1
3	SCREWS-046	1.1	#10-32 X .75 PAN HEAD, PHILLIPS, 316SS, MACHINE SCREW				4
4	SCREWS-049	0	10-32 X 3/8 PHILIPS, PAN, SST	SST			4


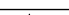


ZQ-060604-91

BOM Table							
ITEM NO.	PART NUMBER	Rev.	Description	Material	FlameRating	Color	QTY.
11	ZQ-06064BI-01	1					1
11.1	ZQ-06064B-01	1	BASE, JUNCTION	PC	UL94-5VA	GRAY	1
11.2	INSERTS-4	0	SELF-TAPPING INSERT: 10-32 UNF X .296 LG.	BRASS 360			12
11.3	LABEL-104	0	UL LABEL				1
12	ZQ-06061CG-02	1					1
12.1	ZQ-06061C-02	1	COVER, JUNCTION	PC	UL94V-0	CLEAR	1
12.2	ZH-0606G	0	GASKET	NEOPRENE		BLACK	1
13	SCREWS-046	1.1	#10-32 X .75 PAN HEAD, PHILLIPS, 316SS, MACHINE SCREW				4
14	SCREWS-049	0	10-32 X 3/8 PHILIPS, PAN, SST	SST			4



ZQ-060604-93

UNLESS OTHERWISE SPECIFIED: DIMENSIONS ARE IN: INCHES[mm] TOLERANCES: ANGULAR: ±2° TWO PLACE DECIMAL: ±.010 THREE PLACE DECIMAL: ±.005 PRINTED GRAPHICS: ±.010 PROPRIETARY AND CONFIDENTIAL THE INFORMATION CONTAINED IN THIS DRAWING IS THE SOLE PROPERTY OF POLYCASE. ANY REPRODUCTION IN PART OR AS A WHOLE WITHOUT THE WRITTEN PERMISSION OF POLYCASE IS PROHIBITED. CAD FILE: ZQ-060604	PART NO. ZQ-060604-91		 <small>1305 CHESTER RD. PARKWAY AVON, OHIO 44011-1083 U.S.A. PH: 1-800-268-1233 440-934-0444 FAX: 440-934-0088</small>	
	MATERIAL			
	FLAME RATING -		SIZE C	JUNCTION ENCLOSURE
	DRAWN CHECKED	NAME D.M.F. - DATE 1/24/2019 12/31/2999	SCALE: 1:1.5 	REV 2 SHEET 6 OF 9

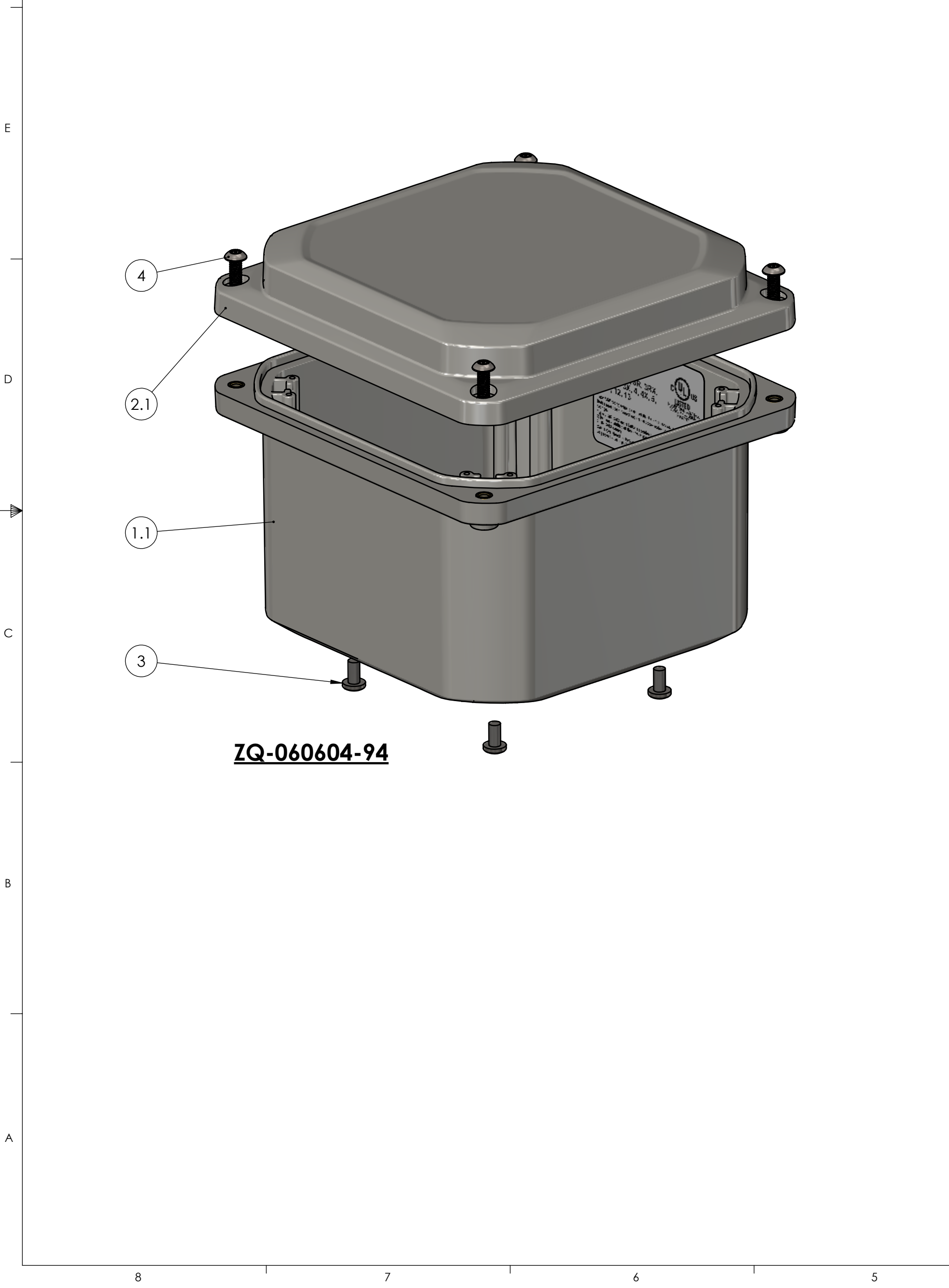
8

7

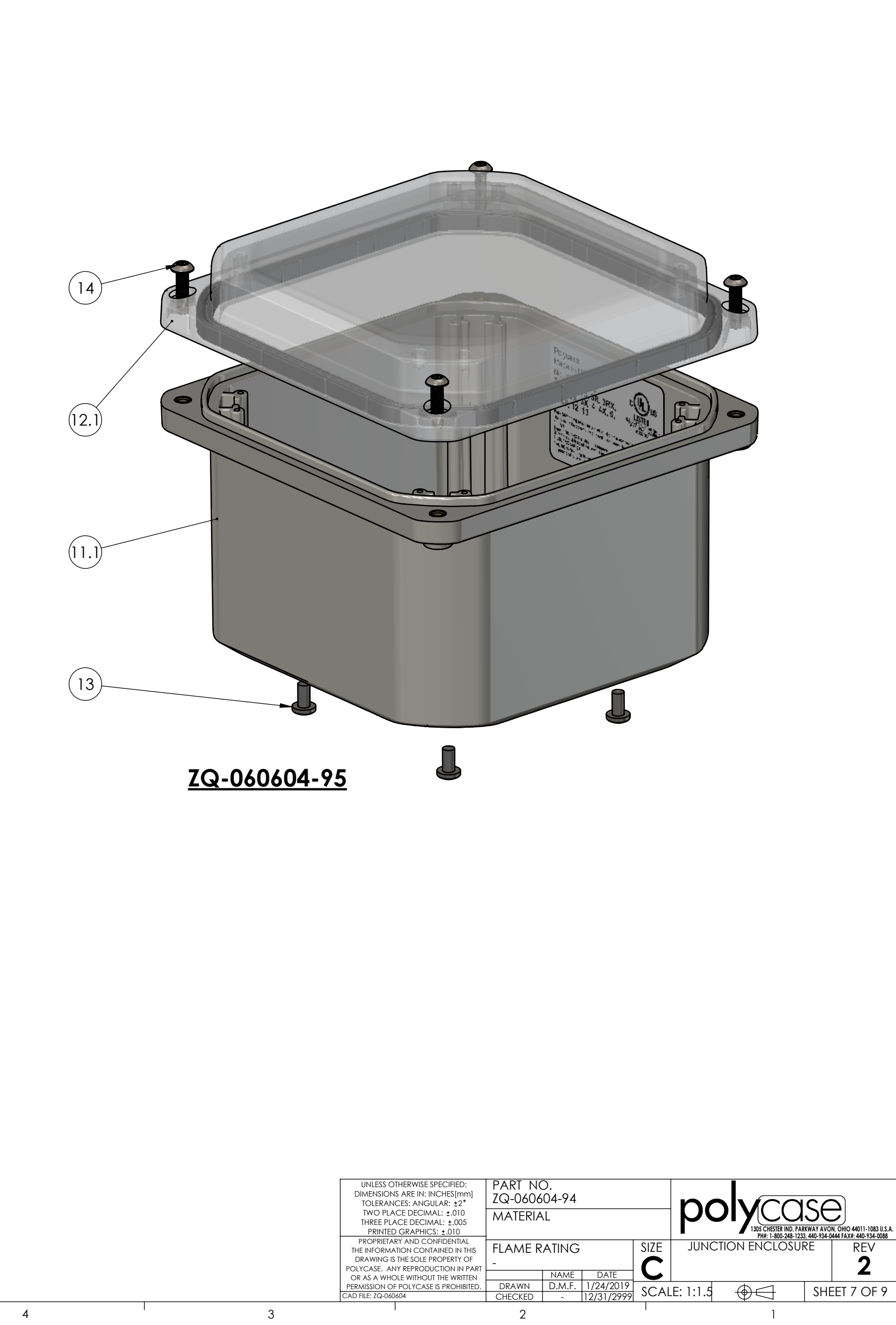
6


5

BOM Table							
ITEM NO.	PART NUMBER	Rev.	Description	Material	FlameRating	Color	QTY.
1	ZQ-06064BI-01	1					1
1.1	ZQ-06064B-01	1	BASE, JUNCTION	PC	UL94-5VA	GRAY	1
1.2	INSERTS-4	0	SELF-TAPPING INSERT: 10-32 UNF X .296 LG.	BRASS 360			12
1.3	LABEL-104	0	UL LABEL				1
2	ZQ-06061CG-01	1	HINGED COVER W/GASKET				1
2.1	ZQ-06061C-01	1	COVER, JUNCTION	PC	UL94-5VA	LIGHT GRAY	1
2.2	ZH-0606G	0	GASKET	NEOPRENE		BLACK	1
3	SCREWS-049	0	10-32 X 3/8 PHILIPS, PAN, SST	SST			4
4	SCREWS-047	0	#10-32 X .75 TAMPER-RESIST TORX BUTTON-HEAD SCREW	304SS			4

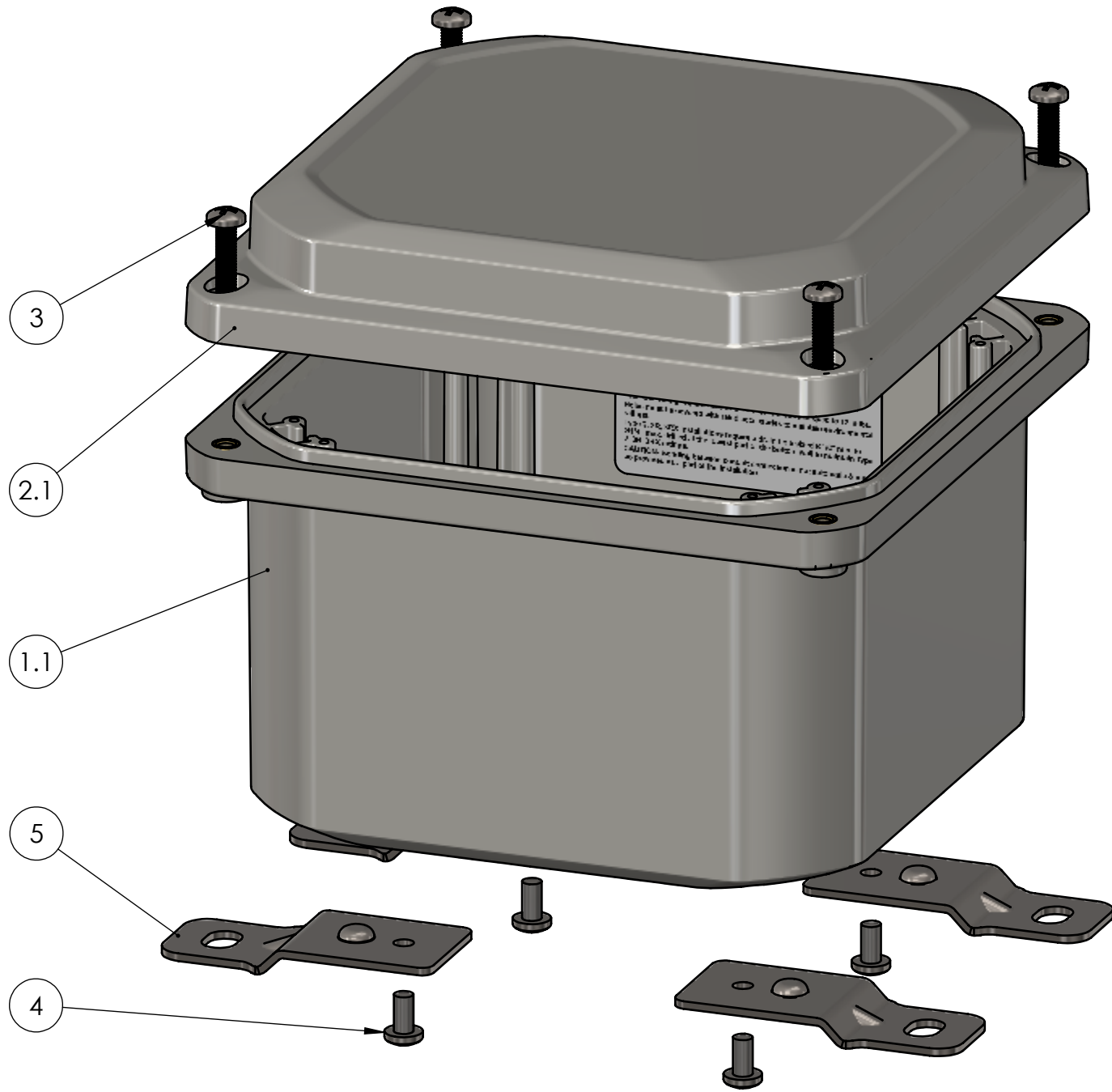


		3		2		1	
BOM Table							
ITEM NO.	PART NUMBER	Rev.	Description	Material	FlameRating	Color	QTY.
11	ZQ-06064BI-01	1					1
11.1	ZQ-06064B-01	1	BASE, JUNCTION	PC	UL94-5VA	GRAY	1
11.2	INSERTS-4	0	SELF-TAPPING INSERT: 10-32 UNF X .296 LG.	BRASS 360			12
11.3	LABEL-104	0	UL LABEL				1
12	ZQ-06061CG-02	1					1
12.1	ZQ-06061C-02	1	COVER, JUNCTION	PC	UL94V-0	CLEAR	1
12.2	ZH-0606G	0	GASKET	NEOPRENE		BLACK	1
13	SCREWS-049	0	10-32 X 3/8 PHILIPS, PAN, SST	SST			4
14	SCREWS-047	0	#10-32 X .75 TAMPER-RESIST TORX BUTTON-HEAD SCREW	304SS			4



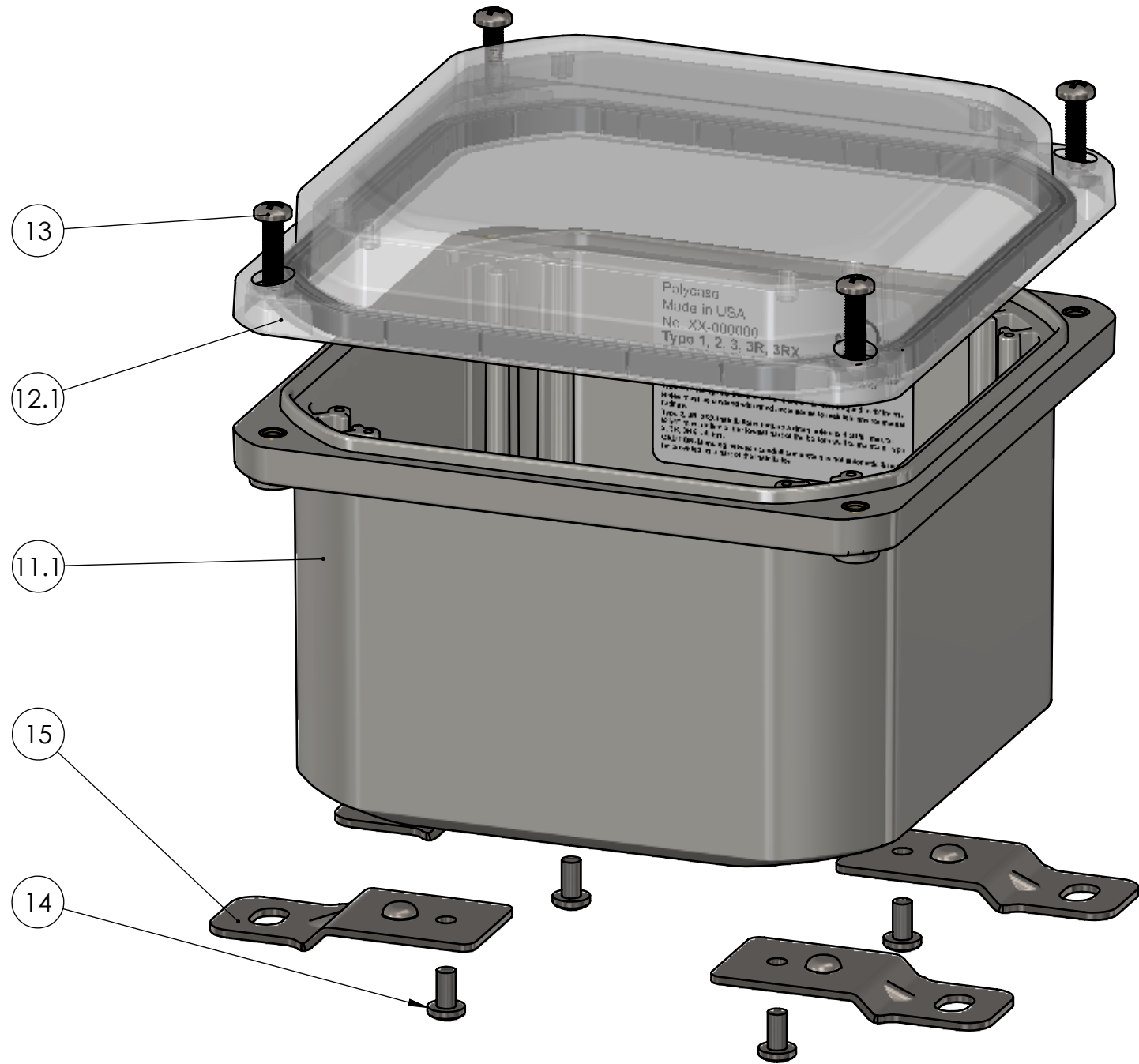
UNLESS OTHERWISE SPECIFIED: DIMENSIONS ARE IN: INCHES[mm] TOLERANCES: ANGULAR: ±2° TWO PLACE DECIMAL: ±.010 THREE PLACE DECIMAL: ±.005 PRINTED GRAPHICS: ±.010 PROPRIETARY AND CONFIDENTIAL THE INFORMATION CONTAINED IN THIS DRAWING IS THE SOLE PROPERTY OF POLYCASE. ANY REPRODUCTION IN PART OR AS A WHOLE WITHOUT THE WRITTEN PERMISSION OF POLYCASE IS PROHIBITED. CAD FILE: ZQ-060604	PART NO. ZQ-060604-94		 <small>1305 CHESTER RD. PARKWAY AVON, OHIO 44011-1083 U.S.A. PH: 1-800-248-1233 440-934-0444 FAX: 440-934-0088</small>	
	MATERIAL			
	FLAME RATING -		SIZE C	JUNCTION ENCLOSURE REV 2
	DRAWN CHECKED			
	NAME	DATE		
	D.M.F.	1/24/2019		
	12/31/2999			
		SHEET 7 OF 9		

BOM Table							
ITEM NO.	PART NUMBER	Rev.	Description	Material	FlameRating	Color	QTY.
1	ZQ-06064BI-01	1					1
1.1	ZQ-06064B-01	1	BASE, JUNCTION	PC	UL94-5VA	GRAY	1
1.2	INSERTS-4	0	SELF-TAPPING INSERT: 10-32 UNF X .296 LG.	BRASS 360			12
1.3	LABEL-104	0	UL LABEL				1
2	ZQ-06061CG-01	1	HINGED COVER W/GASKET				1
2.1	ZQ-06061C-01	1	COVER, JUNCTION	PC	UL94-5VA	LIGHT GRAY	1
2.2	ZH-0606G	0	GASKET	NEOPRENE		BLACK	1
3	SCREWS-046	1.1	#10-32 X .75 PAN HEAD, PHILLIPS, 316SS, MACHINE SCREW				4
4	SCREWS-049	0	10-32 X 3/8 PHILIPS, PAN, SST	SST			4
5	ZH-91F-01	2	MOUNTING FOOT	304SS		-	4



ZQ-060604-41

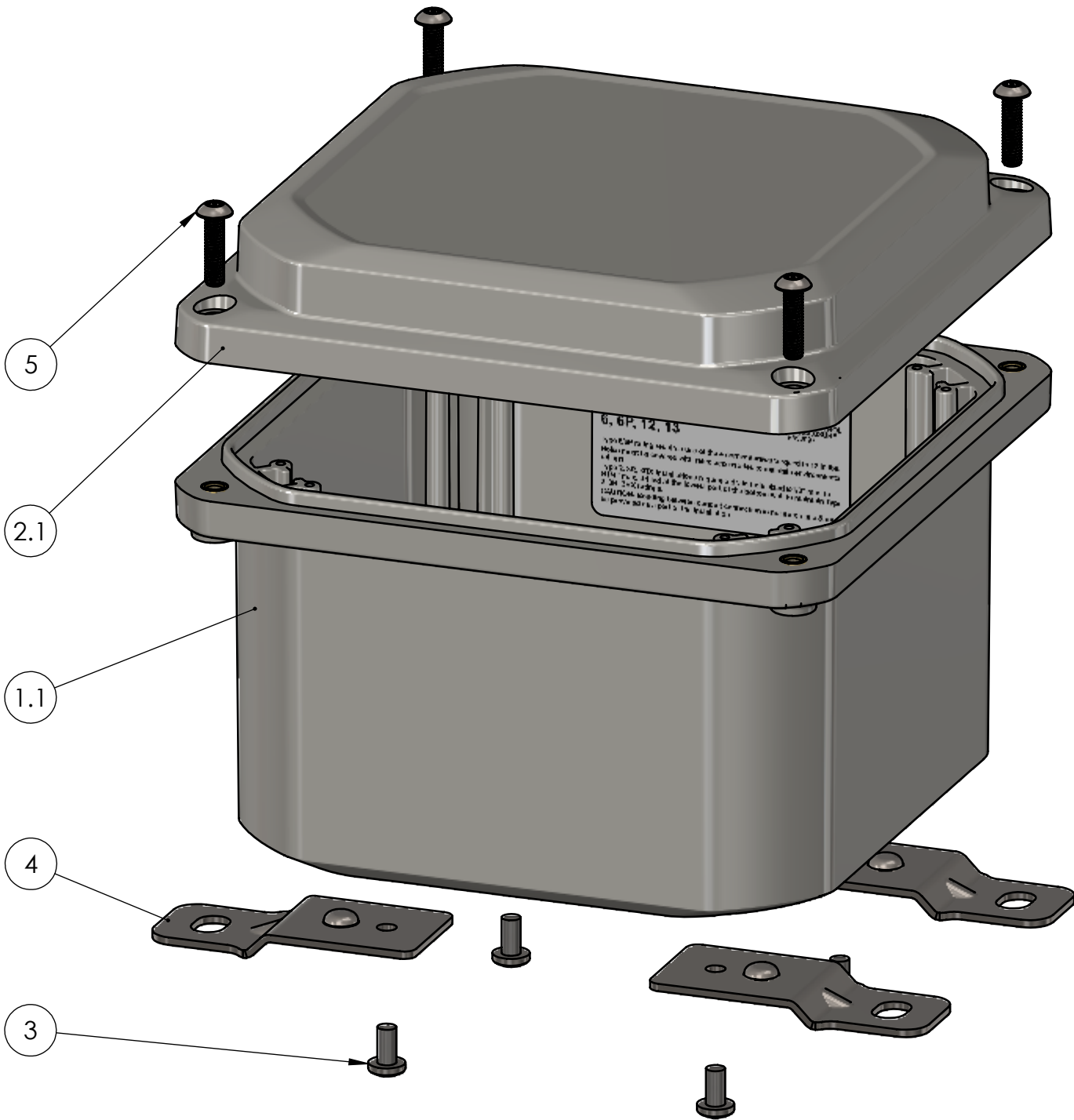
BOM Table							
ITEM NO.	PART NUMBER	Rev.	Description	Material	FlameRating	Color	QTY.
11	ZQ-06064BI-01	1					1
11.1	ZQ-06064B-01	1	BASE, JUNCTION	PC	UL94-5VA	GRAY	1
11.2	INSERTS-4	0	SELF-TAPPING INSERT: 10-32 UNF X .296 LG.	BRASS 360			12
11.3	LABEL-104	0	UL LABEL				1
12	ZQ-06061CG-02	1					1
12.1	ZQ-06061C-02	1	COVER, JUNCTION	PC	UL94V-0	CLEAR	1
12.2	ZH-0606G	0	GASKET	NEOPRENE		BLACK	1
13	SCREWS-046	1.1	#10-32 X .75 PAN HEAD, PHILLIPS, 316SS, MACHINE SCREW				4
14	SCREWS-049	0	10-32 X 3/8 PHILIPS, PAN, SST	SST			4
15	ZH-91F-01	2	MOUNTING FOOT	304SS		-	4



ZQ-060604-43

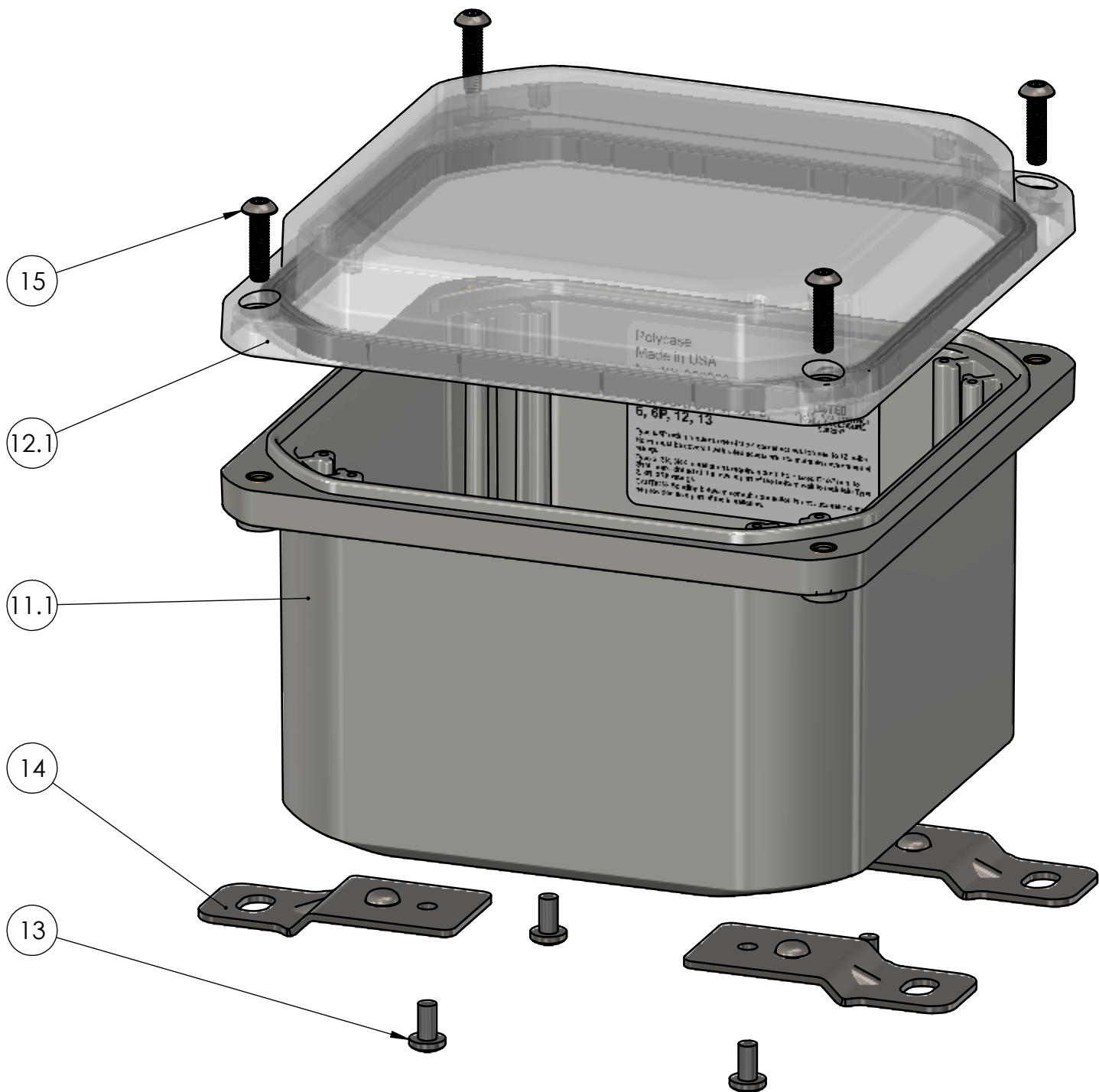
UNLESS OTHERWISE SPECIFIED: DIMENSIONS ARE IN: INCHES[mm] TOLERANCES: ANGULAR: ±2° TWO PLACE DECIMAL: ±.010 THREE PLACE DECIMAL: ±.005 PRINTED GRAPHICS: ±.010		PART NO. ZQ-060604-41		MATERIAL		polycase 1305 CHESTER RD. PARKWAY AVON, OHIO 44011-1083 U.S.A. PH: 1-800-268-1233 440-934-0444 FAX: 440-934-0088	
PROPRIETARY AND CONFIDENTIAL THE INFORMATION CONTAINED IN THIS DRAWING IS THE SOLE PROPERTY OF POLYCASE. ANY REPRODUCTION IN PART OR AS A WHOLE WITHOUT THE WRITTEN PERMISSION OF POLYCASE IS PROHIBITED. CAD FILE: ZQ-060604		FLAME RATING -		SIZE C		JUNCTION ENCLOSURE	
DRAWN CHECKED		NAME D.M.F.		DATE 1/24/2019 12/31/2999		SCALE: 1:1.5	
						REV 2	
						SHEET 8 OF 9	

BOM Table							
ITEM NO.	PART NUMBER	Rev.	Description	Material	FlameRating	Color	QTY.
1	ZQ-06064BI-01	1					1
1.1	ZQ-06064B-01	1	BASE, JUNCTION	PC	UL94-5VA	GRAY	1
1.2	INSERTS-4	0	SELF-TAPPING INSERT: 10-32 UNF X .296 LG.	BRASS 360			12
1.3	LABEL-104	0	UL LABEL				1
2	ZQ-06061CG-01	1	HINGED COVER W/GASKET				1
2.1	ZQ-06061C-01	1	COVER, JUNCTION	PC	UL94-5VA	LIGHT GRAY	1
2.2	ZH-0606G	0	GASKET	NEOPRENE		BLACK	1
3	SCREWS-049	0	10-32 X 3/8 PHILIPS, PAN, SST	SST			4
4	ZH-91F-01	2	MOUNTING FOOT	304SS		-	4
5	SCREWS-047	0	#10-32 X .75 TAMPER-RESIST TORX BUTTON-HEAD SCREW	304SS			4



ZQ-060604-44

BOM Table							
ITEM NO.	PART NUMBER	Rev.	Description	Material	FlameRating	Color	QTY.
11	ZQ-06064BI-01	1					1
11.1	ZQ-06064B-01	1	BASE, JUNCTION	PC	UL94-5VA	GRAY	1
11.2	INSERTS-4	0	SELF-TAPPING INSERT: 10-32 UNF X .296 LG.	BRASS 360			12
11.3	LABEL-104	0	UL LABEL				1
12	ZQ-06061CG-02	1					1
12.1	ZQ-06061C-02	1	COVER, JUNCTION	PC	UL94V-0	CLEAR	1
12.2	ZH-0606G	0	GASKET	NEOPRENE		BLACK	1
13	SCREWS-049	0	10-32 X 3/8 PHILIPS, PAN, SST	SST			4
14	ZH-91F-01	2	MOUNTING FOOT	304SS		-	4
15	SCREWS-047	0	#10-32 X .75 TAMPER-RESIST TORX BUTTON-HEAD SCREW	304SS			4



ZQ-060604-45

UNLESS OTHERWISE SPECIFIED: DIMENSIONS ARE IN: INCHES[mm] TOLERANCES: ANGULAR: ±2° TWO PLACE DECIMAL: ±.010 THREE PLACE DECIMAL: ±.005 PRINTED GRAPHICS: ±.010		PART NO. ZQ-060604-44		MATERIAL		polycase 1305 CHESTER RD. PARKWAY AVON, OHIO 44011-1083 U.S.A. PH: 1-800-268-1233 440-934-0444 FAX: 440-934-0088	
PROPRIETARY AND CONFIDENTIAL THE INFORMATION CONTAINED IN THIS DRAWING IS THE SOLE PROPERTY OF POLYCASE. ANY REPRODUCTION IN PART OR AS A WHOLE WITHOUT THE WRITTEN PERMISSION OF POLYCASE IS PROHIBITED. CAD FILE: ZQ-060604		FLAME RATING -		SIZE C		JUNCTION ENCLOSURE	
DRAWN CHECKED		NAME D.M.F.		DATE 1/24/2019		SCALE: 1:1.5	
						REV 2	
						SHEET 9 OF 9	