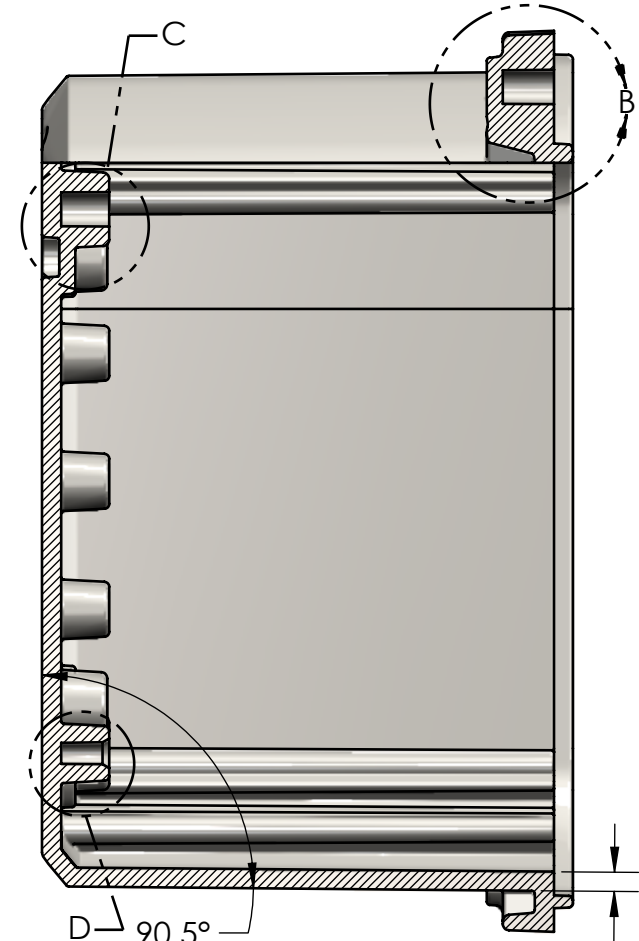
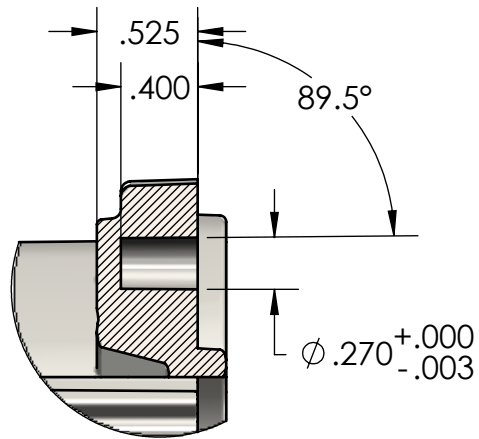


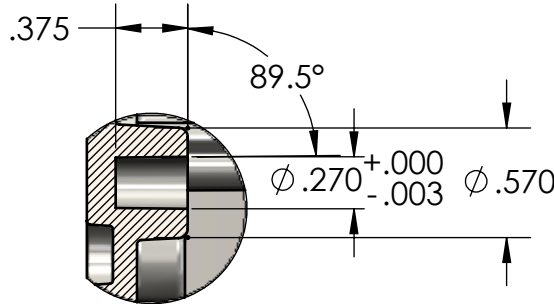
		TOLERANCE CHART																					
DIMENSION RANGE	0	.039	.118	.236	.394	.591	.866	1.181	1.575	2.087	2.756	3.543	4.724	6.299	7.874	9.843	12.402	15.748	19.685	24.803	31.496		
	.039	.118	.236	.394	.591	.866	1.181	1.575	2.087	2.756	3.543	4.724	6.299	7.874	9.843	12.402	15.748	19.685	24.803	31.496	39.37		
	+.007	+.007	+.008	+.008	+.009	+.010	+.011	+.012	+.013	+.015	+.017	+.020	+.024	+.028	+.035	.043	.051	.063	.079	.098	.118		
	TOOL DEPENDENT		+.007	+.007	+.008	+.008	+.009	+.010	+.011	+.012	+.013	+.015	+.017	+.020	+.024	+.028	+.035	.043	.051	.063	.079	.098	.118
	NON-TOOL DEPENDENT		+.003	+.004	+.004	+.004	+.005	+.006	+.007	+.008	+.009	+.011	+.013	+.016	+.020	+.024	+.031	.039	.047	.059	.075	.094	.114



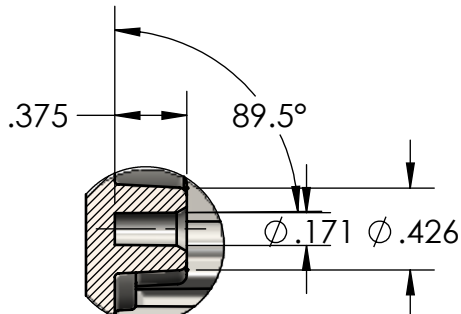
SECTION A-A



DETAIL B
SCALE 1 : 1



DETAIL C
SCALE 1 : 1





DETAIL D
SCALE 1 : 1

- NOTES:
1. REFER TO SOLID MODEL FOR COMPLETE PART DEFINITION.
 2. (INSPECTION DIMENSION)
 3. EJECTOR PINS TO BE FLUSH $\pm .010$
 4. FLASH .005 MAX
 5. GATE TO BE REMOVED FLUSH $\pm .030$

PART NUMBER: ZQ-06064B-01
MATERIAL: PC
MATERIAL SPEC: /PC/XXX/GY
COLOR: GRAY
FLAME RATING: UL94-5VA

REV.	COMMENT	ZONE	REVISED BY	CREATION DATE
1	ADDED -40-45 & -90-95, UPDATED FLAME RATING		Douglas French	7-29-2024
0			Douglas French	9-6-2022

UNLESS OTHERWISE SPECIFIED: DIMENSIONS ARE IN: INCHES[mm] TOLERANCES: ANGULAR: ± TWO PLACE DECIMAL: ± THREE PLACE DECIMAL: ± PRINTED GRAPHICS: ±0.10		PART NO. ZQ-06064B-01		 <small>1365 CHESTER DR. TAINWAY AVON, OHIO 44011-1803 U.S.A. PH: 1-800-245-1231 FAX: 440-954-0441 FAX-440-954-0008</small>				
		MATERIAL PC						
PROPRIETARY AND CONFIDENTIAL THE INFORMATION CONTAINED IN THIS DRAWING IS THE SOLE PROPERTY OF POLYCASE. ANY REPRODUCTION IN PART OR AS A WHOLE WITHOUT THE WRITTEN PERMISSION OF POLYCASE IS PROHIBITED. CAD FILE: ZQ-06064B		FLAME RATING UL94-5VA		SIZE C	BASE, JUNCTION	REV 1		
		DRAWN CHECKED		NAME D.M.F.	DATE 7/30/2019 1/14/2019	SCALE: 1:1.5		SHEET 1 OF 1

