

TOLERANCE CHART																
DIMENSION RANGE	0	.039	.118	.236	.394	.591	.866	1.181	1.575	2.087	2.756	3.543	4.724	6.299	7.874	9.843
TOOL DEPENDENT	±.007	±.007	±.008	±.008	±.009	±.010	±.011	±.012	±.013	±.015	±.017	±.020	±.024	±.028	±.035	.043
NON-TOOL DEPENDENT	±.003	±.004	±.004	±.004	±.005	±.006	±.007	±.008	±.009	±.011	±.013	±.016	±.020	±.024	±.031	.039

D

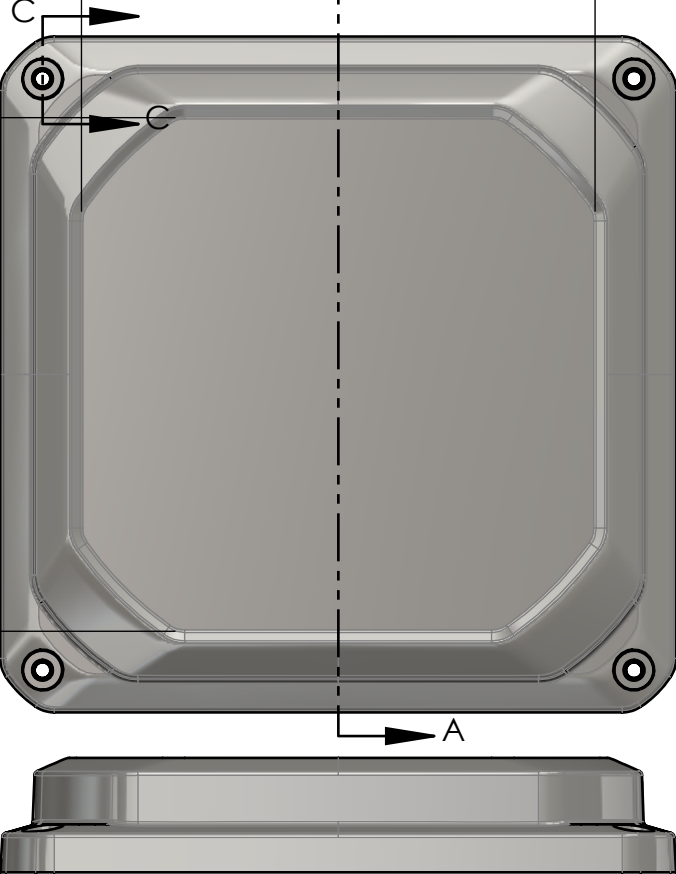
C

B

A

.250 TYP.
.150

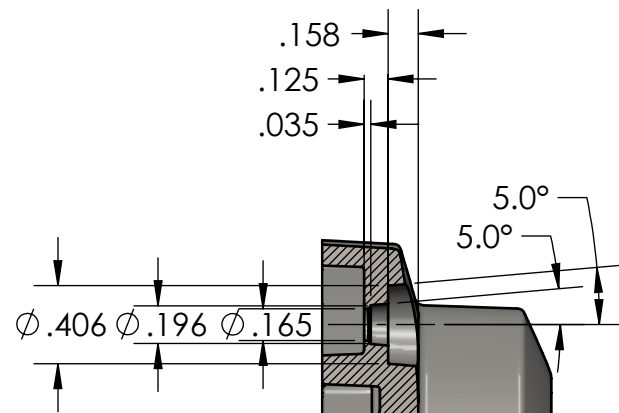
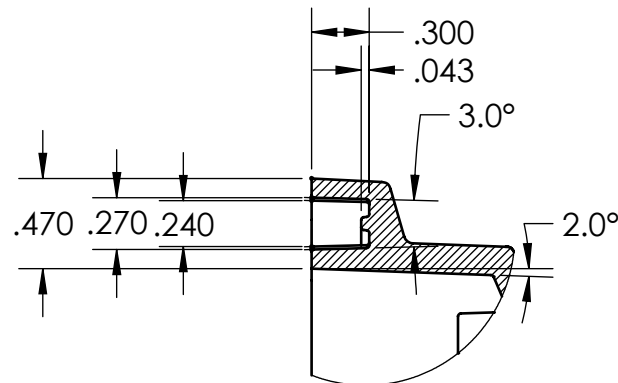
5.350

5.350
A

SECTION A-A

1.192

.500

SECTION C-C
SCALE 1 : 1DETAIL B
SCALE 1 : 1

- NOTES:
1. REFER TO SOLID MODEL FOR COMPLETE PART DEFINITION.
2. (INSPECTION DIMENSION)
3. EJECTOR PINS TO BE FLUSH ±.010
4. FLASH .005 MAX
5. GATE TO BE REMOVED FLUSH ±.015

REV.	COMMENT	ZONE	REVISED BY	CREATION DATE
1	ADDED -40-45 & -90-95, UPDATED FLAME RATING		Douglas French	7-29-2024
0			Douglas French	9-6-2022
REVISIONS				

UNLESS OTHERWISE SPECIFIED:
DIMENSIONS ARE IN: INCHES [mm]
TOLERANCES: ANGULAR: ±2°
TWO PLACE DECIMAL: ±.010
THREE PLACE DECIMAL: ±.005
PRINTED GRAPHICS: ±.010

PROPRIETARY AND CONFIDENTIAL
THE INFORMATION CONTAINED IN THIS
DRAWING IS THE SOLE PROPERTY OF
POLYCASE. ANY REPRODUCTION IN PART
OR AS A WHOLE WITHOUT THE WRITTEN
PERMISSION OF POLYCASE IS PROHIBITED.
CAD FILE: ZQ-06061C

PART NO.
ZQ-06061C-01
MATERIAL
PC

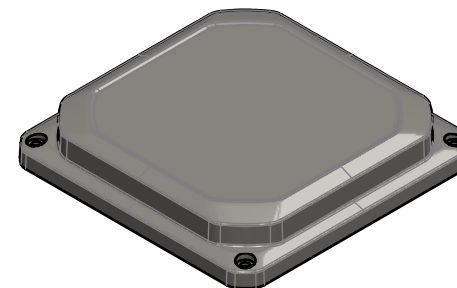
FLAME RATING
UL94-5VA

DRAWN	NAME	DATE
CHECKED	D.M.F.	6/19/2019
	-	1/14/2019

1305 CHESTER IND. PARKWAY AVON, OHIO 44011-1083 U.S.A.
PH#: 1-800-248-1233, 440-934-0444 FAX#: 440-934-0088

COVER, JUNCTION	REV 1
SCALE: 1:2	SHEET 1 OF 1

PART NUMBER: ZQ-06061C-01
MATERIAL: PC
MATERIAL SPEC: /PC/XXX/GY
COLOR: LIGHT GRAY
FLAME RATING: UL94-5VA



PART NUMBER: ZQ-06061C-02
MATERIAL: PC
MATERIAL SPEC: /PC/XXX/CL
COLOR: CLEAR
FLAME RATING: UL94V-0



7.040

7.040

4.422

5.411

5.411

4.422

8X Ø .220

8X Ø .090