

# 2024 CATALOG



CANADIAN  
PRICING



**PASTURED POULTRY SOLUTIONS**  
for Broilers, Layers, Turkeys, & Ducks



# THE MILLER FAMILY HOMESTEAD



Welcome to our homestead! Our 2.13 acre pasture area is full of activity. Two Jersey cows (completely grassfed) give us lots of good milk to make our own dairy products – raw milk, butter, cheese, yogurt, sour cream, and kefir. A driving horse and pony provide transportation for the family. Two to four pigs are finished each year in a pastured pig hut that is moved daily, giving us an abundance of pork products.

There is also a farm pond used for swimming and stocked with fish. Alongside is a young 30+ tree orchard that we trust will provide us with an abundance of fruit in years to come. Herbs, berry plants, and wildflowers are planted among the trees. Pastured layers, broilers, and ducks travel between the orchard rows in Alumi-Coops.

Our 9100 ft<sup>2</sup> garden (26 raised beds) provides us with vegetables, blackberries, red & black raspberries, grapes, strawberries, and much more. We are truly blessed beyond measure with all that God has entrusted into our care.

Wishing you God's blessings on your homestead!

*David & Arlene Miller*  
*LuAnn, Lisa, Katy, Amy,*  
*Adrian, & Kendra*



# WARRANTY / CONNECT WITH US

## FOR CANADIAN SALES OR TO BECOME A DEALER, CONTACT:

### Gateway Sales & Services

John Bergen  
52056 Glencolin Line  
Aylmer, ON N5H 2R3, Canada  
Phone: 800-705-4221 ext. 3  
[gateway3941@gmail.com](mailto:gateway3941@gmail.com)

## MEET THE SUPERIOR POULTRY PRODUCTS TEAM:

### *BUD MILLER*

USA Wholesale Account Manager/Spokesperson

### *DAVID MILLER*

Founder/CEO

### *JOE WHETSTONE*

Bookkeeping/Accounting

### *VERNON BONTRAGER*

Logistics Manager

### *NELSON MILLER*

Purchasing/Inventory

### *AARON BONTRAGER*

Weld Shop Manager

### *LAVON GRABER*

Welding/Packaging

### *LAMAR MILLER*

Welding/Assembly

### *DARYL HOCHSTETLER*

Welding/Assembly



### Superior Poultry Products

1320 S. 300 E.  
LaGrange, IN 46761  
Phone: (260) 463-2919  
Fax: (260) 463-3024  
[superiorpoultry@ibyfax.com](mailto:superiorpoultry@ibyfax.com)

## MSRP

Prices listed are Manufacturer's Suggested Retail Pricing. However, each dealer pays for shipping, so prices may vary by dealer. **PRICES SUBJECT TO CHANGE. PRICES SHOWN IN CANADIAN DOLLARS.**

## DEALER NETWORK

All of our products are available exclusively through our dealer network, located throughout the USA, Canada, Australia, and New Zealand. Check your local farm supply store, or contact us directly for information on becoming a dealer.

## SATISFACTION

Our goal is your complete satisfaction. If you receive a damaged or defective product, please contact your dealer for fastest service.

## WARRANTY

Each Alumi-Coop comes with a standard 1-year warranty on materials and manufacturing. To receive an additional 2-year extension, simply complete the warranty registration card included with your coop and return it within 10 days of purchase. Mail or email to Gateway Sales. You will then receive a confirmation and a warranty sticker for your Alumi-Coop.





# THE ALUMI-COOP DIFFERENCE

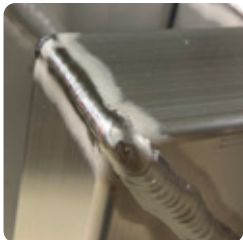
## WHY CHOOSE ALUMI-COOPS?

Alumi-Coops are manufactured in LaGrange, Indiana, USA, without compromise. Built with high quality aluminum, the small components are laser-cut and combined with premium tubing and netting to construct each coop. This commitment to accuracy also means that on-site assembly is easy, making it easy to get the coop ready for its first flock.

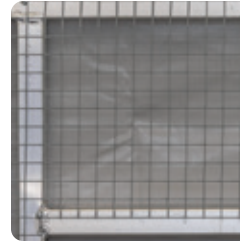
**SCAN TO WATCH THE  
ALUMI-COOP DIFFERENCE**



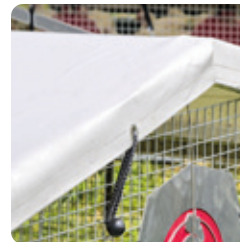
**Aluminum:** Naturally corrosion resistant, this metal stands at the intersection of quality and value. By using T5 & T6 aluminum as our primary materials, we know that the coop you receive is built for a lifetime of functionality and durability.



**TIG Welding:** This method allows for a precise weld, with the heat and material being controlled by the welder for a lasting bond on every connection. TIG welding is a discipline that few people ever master – an art form that is on full display on each Alumi-Coop!



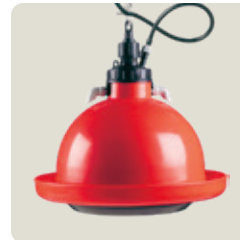
**Netting:** Our netting is manufactured in the USA to exacting specifications. We use a 1" x 1" 14-gauge steel netting that is galvanized after welding to prevent corrosion. Our custom rollformer flattens the netting before it is attached to the frame, making it neat and flat.



**Shelter-Rite Covers:** Manufactured with 18 oz. American-made marine-grade vinyl, each cover is precision cut by a CNC machine, then hand sewn with nylon thread, and finished with ultra smooth stainless steel grommets. These covers fit snugly and shed water like a duck.



**Superior Poultry Feeder & Waterer:** Roto-molded, high-impact-resistant poly. Feeder has a proven design that completely eliminates waste. Waterer has a high quality, gravity-actuated, bowl-style drinking cup.



**Plasson Drinkers:** Most reliable drinker on the market. We have seen 20-30 year old Plasson drinkers still going strong in pastured poultry operations. See page 21 for more details.

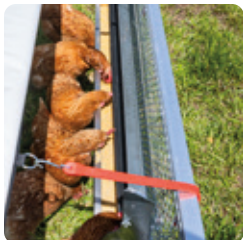




# THE ALUMI-COOP DIFFERENCE



**Aluminum Water Tanks:** Our aluminum tanks are laser-cut, CNC bent, and TIG welded to ensure a lifetime product. We use a top quality 3-way valve so you can easily dump old water and use fresh water every day. Aluminum also stays cooler to the touch longer than plastic.



**48" Tray Feeders:** Our 12 × 12 and 12 × 24 Alumi-Coops come standard with these 48" tray feeders. Each one has an anti-roost system. They also work well in the 6 × 10 and 10 × 12 models. Very easy to adjust and minimal food waste!



**Nestboxes:** An exclusive Alumi-Coop feature. High quality galvanized reversible nestboxes. Keeps eggs clean and makes it easy for children to gather eggs.



**Roosts:** Our roost poles are custom made locally to meet our exact specifications. They are 1½" round Red Oak dowels, which closely mimic tree limbs found in natural habitats.



## ALPHA-LITE WHEEL SYSTEM™

Simply lift the handle located on the entry end of the coop, causing the wheels on the far end to engage and lift that end of the coop. This transfers 75% of the weight to the wheels, allowing you to easily pick up your end of the coop and quickly roll it to its new location. The system also keeps the bottom of the coop close to the ground, keeping your poultry safely contained as the coop moves.

In 2023, we upgraded the Alpha-Lite Wheel System™ for a smoother and higher lift. The Alpha-Lite Wheel System™ is an integral part of the Alumi-Coop and not available separately.



# 5 × 6 ALUMI-COOP







## WHY A 5 × 6 ALUMI-COOP?

- Plenty of room for up to 12 layers, 15 broilers, 4 turkeys, or 10 ducks.
- Perfect option for homesteaders or children nurturing their own little flock!
- Naturally very wind resistant.
- Option: 4 Seasons Enclosure Kit (page 16)
- Coop Dimensions: 6' L × 5' W × 4' H
- Door Dimensions: 18" W × 44" H
- Total Weight (Package #1): 138 lb
- Handle Weight: 30 lb



### LAYER PACKAGE #1

PICTURED

- 5 × 6 Alumi-Coop
- Reversible Rollaway Nestbox
- Superior Roost System
- Superior Outside Feeder
- Superior Outside Waterer

**MSRP: \$2295**

### LAYER PACKAGE #2

- 5 × 6 Alumi-Coop
- Reversible Rollaway Nestbox
- Superior Roost System
- Add your own Feeder & Waterer.

**MSRP: \$2066**

### BROILER PACKAGE #3

- 5 × 6 Alumi-Coop
- Superior Outside Feeder
- Superior Outside Waterer

**MSRP: \$1910**

### BROILER PACKAGE #4

- 5 × 6 Alumi-Coop
- Add your own Feeder & Waterer for special applications.

**MSRP: \$1688**



# 6 × 10 ALUMI-COOP







## WHY A 6 × 10 ALUMI-COOP?

- Plenty of room for up to 24 layers, 30 broilers, 8 turkeys, or 12 ducks.
- Great option for small families!
- Severe wind protection package standard (requires the addition of locally sourced 8" × 8" × 16" cinder blocks).
- Option: 4 Seasons Enclosure Kit (page 16)
- Coop Dimensions: 10' L × 6' W × 5' H
- Door Dimensions: 27" W × 44" H
- Total Weight (*Package #1*): 234 lb
- Handle Weight: 50 lb

### PASTURE PRO LAYER PACKAGE

*NEW!*

- 6 × 10 Alumi-Coop
- Reversible Rollaway Nestbox
- Superior Roost System
- 10 Gallon Saddle Tank
- Plasson Waterer
- 35 lb Kuhl Feeder
- Feeder & Waterer Rafter Clip

**MSRP: \$4604**

### PASTURE PRO BROILER PACKAGE

*NEW!*

- 6 × 10 Alumi-Coop
- 10 Gallon Saddle Tank
- Plasson Waterer
- 35 lb Kuhl Feeder
- Feeder & Waterer Rafter Clip

**MSRP: \$4462**

### LAYER PACKAGE #1

*PICTURED*

- 6 × 10 Alumi-Coop
- Reversible Rollaway Nestbox
- Superior Roost System
- (2) Superior Outside Feeders
- (2) Superior Outside Waterers

**MSRP: \$4118**

### LAYER PACKAGE #2

- 6 × 10 Alumi-Coop
- Reversible Rollaway Nestbox
- Superior Roost System
- *Add your own Feeder & Waterer.*

**MSRP: \$3902**

### BROILER PACKAGE #3

- 6 × 10 Alumi-Coop
- (2) Superior Outside Feeders
- (2) Superior Outside Waterers

**MSRP: \$3618**

### BROILER PACKAGE #4

- 6 × 10 Alumi-Coop
- *Add your own Feeder & Waterer for special applications.*

**MSRP: \$3395**



# 10 × 12 ALUMI-COOP

BEST SELLER







## WHY A 10 × 12 ALUMI-COOP?

- Our most versatile coop. Works well for multi-species grazing.
- Plenty of room for up to 50 layers, 80 broilers, 15 turkeys, or 25 ducks.
- Severe wind protection package standard (requires the addition of locally sourced 8" × 8" × 16" cinder blocks).
- Option: 4 Seasons Enclosure Kit (page 16)
- Option: Greenhouse Cover (page 17)
- Coop Dimensions: 12' L × 10' W × 6' H
- Door Dimensions: 27" W × 57½" H
- Total Weight (Package #1): 313 lb
- Handle Weight: 70 lb

*NOTE: Packages #1 and #3 come with (1) Superior Brand Feeder and Waterer. Depending on how many birds are in your coop, we recommend 1-2 additional units. General rule of thumb is (1) unit per 12-15 birds.*

### PASTURE PRO LAYER PACKAGE

- 10 × 12 Alumi-Coop
- Reversible Rollaway Nestbox
- Superior Roost System
- 10 Gallon Saddle Tank
- Plasjon Waterer
- 35 lb Kuhl Feeder
- Feeder & Waterer Rafter Clip

**MSRP: \$5555**

*NEW!*

*PICTURED*

### PASTURE PRO BROILER PACKAGE

- 10 × 12 Alumi-Coop
- (2) 10 Gallon Saddle Tanks
- (2) Plasjon Waterers
- (2) 35 lb Kuhl Feeders
- (2) Feeder & Waterer Rafter Clips

**MSRP: \$5366**

*NEW!*

## LAYER PACKAGE #1

- 10 × 12 Alumi-Coop
- Reversible Rollaway Nestbox
- Superior Roost System
- Superior Outside Feeder
- Superior Outside Waterer

**MSRP: \$5063**

## LAYER PACKAGE #2

- 10 × 12 Alumi-Coop
- Reversible Rollaway Nestbox
- Superior Roost System
- Add your own Feeder & Waterer.

**MSRP: \$4826**

## BROILER PACKAGE #3

- 10 × 12 Alumi-Coop
- Superior Outside Feeder
- Superior Outside Waterer

**MSRP: \$4367**

## BROILER PACKAGE #4

- 10 × 12 Alumi-Coop
- Add your own Feeder & Waterer for special applications.

**MSRP: \$4151**



# 12 × 12 ALUMI-COOP







## WHY A 12 × 12 ALUMI-COOP?

- Plenty of room for up to 100 broilers, 25 turkeys, or 60 ducks.
- Now features an upgraded 27 gallon aluminum tank with (1) Plasson drinker.
- Naturally very wind resistant!
- Designed from a chicken's perspective to completely eliminate stress.
- Adjustable feeders to eliminate feed waste.
- 16' of feed space to minimize competition.
- We only offer the 12 × 12 in a single package option as our feeding system works in conjunction with our vinyl cover.
- Dimensions: 12' L × 12' W × 42" H.
- Total Weight: 240 lb.
- Handle Weight: 60 lb.

*For additional resources, see page 24.*

The 12 × 12 is our favorite broiler coop at our farm. Though not as versatile as the 10 × 12, it is easier for our children to help feed. So far, our best growouts were 46 days for 5 lb. average dressed weights with Ross 308 genetics.

*NOTE: If stocking to full capacity, we recommend adding (1) Plasson broiler drinker.*

*Use a 1/4" Barbed Hose T to connect multiple broiler drinkers to a single tank.*

## BROILER/TURKEY PACKAGE

- 12 × 12 Alumi-Coop
- (4) 48" tray feeders with anti-roost spinner and 50 lb total capacity
- (1) Plasson Broiler Drinker with 27 gallon aluminum reservoir

**MSRP: \$4489**



*Feeder access cover folds back to feed!*

**Note:** Please take off cover for winter as the 12 × 12 will not handle a heavy snow load.



# 12 × 24 ALUMI-COOP







## WHY A 12 × 24 ALUMI-COOP?

- Plenty of room for up to 200 broilers, 50 turkeys, or 120 ducks.
- Now features an upgraded 27 gallon Aluminum tank with (1) Plasson drinker.
- Naturally very wind resistant!
- Designed from a chicken's perspective to completely eliminate stress.
- Adjustable feeders to eliminate feed waste.
- 32' of feed space to minimize competition.
- We only offer the 12 × 24 in a single package option as our feeding system works in conjunction with our vinyl cover.
- Dimensions: 24' L × 12' W × 42" H.
- Total Weight: 408 lb.
- Handle Weight: 0 lb.

*NOTE: If stocking to full capacity, we recommend adding (2) Plasson broiler drinkers.*

*Use a 1/4" Barbed Hose T to connect multiple broiler drinkers to a single tank.*

*For additional resources, see page 24.*

There are several hundred 12 × 24 coops in use since their introduction in 2021. Feedback on growouts from our farm and across the USA and Canada have been very positive. We also upgraded the wheel system for more lift, making it easier to move than ever.

However, there are several things to keep in mind when considering the 12 × 24 size:

- It can be moved by one person, however, it is recommended to use two people to move (after locking the handle in place).
- Not recommended in fields with grasses taller than 24".
- Caution: Do not use on a steep side hill which makes one side of the roof too flat. This will cause it to collapse with a heavy rain. Keep the bungees tight.

## BROILER/TURKEY PACKAGE

- 12 × 24 Alumi-Coop
- (8) 48" tray feeders with anti-roost spinner and 100 lb total capacity
- (2) Plasson Broiler Drinker with 27 gallon aluminum reservoir

**MSRP: \$7054**



*Feeder access cover folds back to feed!*

**Note:** Please take off cover for winter as the 12 × 24 will not handle a heavy snow load.



# 4-SEASONS WINTER KITS



## 4-SEASONS WINTER KITS

- 30-gauge clear Crystal-Clear vinyl panels.
- Very simple installation – panels simply zip-tie to the frame.
- Available in 5 × 6, 6 × 10, and 10 × 12.

### 5 × 6 WINTER KIT

MSRP: \$427

### 6 × 10 WINTER KIT

MSRP: \$535

### 10 × 12 WINTER KIT

MSRP: \$662

## WINTERTIME LAYER SETUP

1. Prepare a 4-6" wood chip bed on the south side of a building. Make it approximately 2' wider and longer than your Alumi-Coop.
2. Install 4-Seasons Kit with included zip-ties.
3. Pull Alumi-Coop on top of wood chip bedding, facing south. Add shavings as necessary to keep bedding pack dry.

Note: We recommend using a shallow rubber pan to water your birds in the winter.





# MOBILE GREENHOUSE



## MOBILE GREENHOUSE

- 30-gauge clear Crystal-Clear vinyl panels.
- Very simple installation – panels attach using heavy-duty zip-ties and ball bungees.
- Works well for a brooder or winter layer housing. We recommend using 70-80% shade cloth when using for brooders.
- For cold sensitive plants, use an additional floating row cover. Each layer of row cover adds about 10° more protection.



## 10 × 12 GREENHOUSE KIT

- Includes 6 panels and necessary hardware to attach to a 10 × 12 Alumi-Coop frame.

**MSRP: \$1630**

## COMPLETE PACKAGE

- 10 × 12 Frame
- 10 × 12 Greenhouse Cover
- 10 × 12 Hardware Kit

**MSRP: \$4961**

**BEST BUY**



# REVERSIBLE ROLLAWAY NESTS



## DO YOU WANT TO MAKE YOUR EGG OPERATION MORE SANITARY & EFFICIENT?

Try a rollaway nest! They help keep eggs cleaner, reduce damage, and make collection easy, increasing your overall production and saving you time. Many of our packages include a reverse rollaway Nest that fits nicely into the coop. Accessible from the exterior of the coop, these nests are a recommended add-on for all layer applications.

### FEATURES:

- Galvanized Metal Construction throughout.
- Nest Pad is laid on 1" x 1" wire mesh for better air circulation.
- Egg Guard is angled in toward the laying area to prevent chickens from seeing or accessing eggs in the tray.
- Vinyl Flaps on the front darken the laying area and help the chickens feel secure and hidden. This also encourages them to use the nest instead of laying eggs elsewhere.
- Divider-free Nesting Area allows chickens to use the entire nest instead of focusing on a few sections. This design is proven to accommodate larger flocks despite its smaller size.

#### 16" NESTBOX

MSRP: \$230

#### 24" NESTBOX

MSRP: \$270

#### 48" NESTBOX

MSRP: \$330

#### 48" REPLACEMENT PAD

MSRP: \$30





# ALUMI-KNIGHT LIGHTING

## HOW DOES THE ALUMI-KNIGHT INTELLIGENT POULTRY LIGHT WORK?

Our engineering team at Superior Poultry Products developed Alumi-Knight Lighting over the span of 3+ years. We saw a need in the pastured poultry world for a light designed from a chicken's perspective. Our current offering is a pre-production model tested for the Alumi-Coop, but we found they work best on flocks of 100-1000 birds. Models better suited for the Alumi-Coops are coming into production soon!

Alumi-Knight uses a 75 amp hour AGM battery and charges it with a 30 watt panel and adds supplemental light to boost laying percentage in wintertime. It uses an internal intelligent timer and creates a perfect sunrise and sunset with our poultry specific LED flood light.

It comes on in the morning with a soft red glow mimicking dawn and slowly fading over a half hour period into full spectrum daylight. The light will automatically shut off over a ten minute period when the sensor registers full daylight.

In the evening when the light threshold is reached it will turn on to full power in ten minutes and stay on until desired total time is reached, then fade off into a soft red sunset.



## COMPLETE OFF GRID OPTION

- Alumi-Knight Controller
- LED Flood Light
- 75 AH AGM battery and case
- 30 W Solar Panel & Brackets
- Quick Connect Wire Setup
- Mounting Hardware

**MSRP: \$1302**

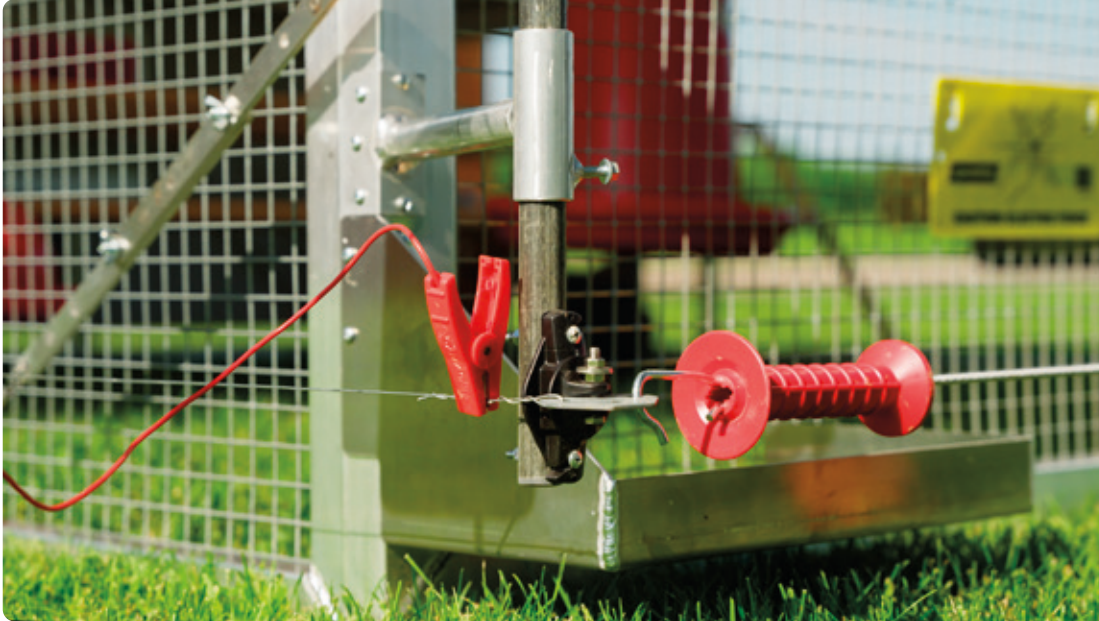
## 110 V PLUG-IN OPTION

- Alumi-Knight Controller
- LED Flood Light
- 30 W Solar Panel
- 110V Hardwired Plug
- Quick Connect Wire Setup
- Mounting Hardware

**MSRP: \$918**



# PRED-X PREDATOR PROTECTION



## PRED-X PREDATOR PROTECTION KITS

Enjoy peace of mind and sleep well at night knowing that your flock is safe from predators!

- These kits will accommodate a coop size of 12 × 24. Or go up to 20 × 40 with the addition of locally sourced offset insulators.



### COMPLETE KIT

- Gallagher S12 Solar Shocker w/step-in ground system & power clip.
- Aluminum Brackets & Mounting Hardware
- Bungee Gate Kit
- 164' Spool of 17 Ga. Aluminum Wire
- (4) Caution Signs

**MSRP: \$743**

### HARDWARE KIT (WITHOUT SOLAR SHOCKER)

- Aluminum Brackets & Mounting Hardware
- Bungee Gate Kit
- 164' Spool of 17 Ga. Aluminum Wire
- (4) Caution Signs
- *Provide your own locally sourced shocker kit.*

**MSRP: \$378**





# PLASSON PARTS & SERVICE

When you're looking for a superior drinker for your coops, try Plasson. For more than 40 years, Plasson has built the world's most reliable poultry drinkers -- the "standard of the industry."

As an authorized distributor and service center for Plasson Drinkers, Superior Poultry Products stocks both the complete units and all replacement parts for the Broiler Drinker. Check them out at your local dealer!

## Benefits Include:

- PLASSON drinkers are made of a rugged high-impact plastic, specially formulated to withstand the ravages of the active broiler house for many years.
- The unique feature of the PLASSON drinker is the ballast bottle, which acts independently of the bell and eliminates wear on the valve mechanism.
- Ensures a constant water level and a dry floor. Once a bird drinks as little as 10 grams (0.3 oz.) of water, this highly sensitive and maintenance-free system is activated.
- Approximately 75-100 adult birds per PLASSON drinker.



BEST SELLER



Superior Broiler Drinker Kit  
2140000  
MSRP: \$117.80

## Includes:

- Complete Plasson Broiler Drinker
- 12' Flexible Tube, In-Line Shut Off, & (2) 1/4" Unions
- Upgraded 6' Nylon Cord Adjuster Kit
- Individually Packaged for Retail Sales



# ACCESSORIES & PARTS



## SPP FEEDER

- 20 lb. feed capacity.
- Not suitable for chicks.
- Dual feed distributors.
- Completely waste free.
- High-Impact Resistant poly.

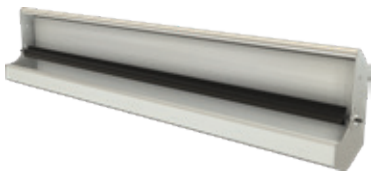
**MSRP: \$155.30**



## SPP WATERER

- 3 gallon water capacity.
- New gravity actuated bowl-style drinking cup.
- High-Impact Resistant poly.

**MSRP: \$114.80**



## SUPERIOR 48" TRAY FEEDER

- 12 lb. feed capacity.
- Anti-Roost chick spinner.

**MSRP: \$117.40**



## KUHL FEEDER

- 35 lb. feed capacity.
- Tough design, but will waste more feed if not adjusted properly.

**MSRP: \$73.60**



## 10 GAL. SADDLE TANK

- Laser cut and TIG welded.
- 3-way valve.
- 3/4" to 1/4" reducer fitting.
- 1/4" pipe nipple.

**MSRP: \$390.20**



## REPLACEMENT BOWL-STYLE DRINKING CUPS

- Made for the SPP Waterer.
- 30 day Warranty on Drinking Cups.

**MSRP: \$8.80 EA**



## RAFTER CLIP

- To hang feeders and waterers from Alumi-Coop 1" rafters.

**MSRP: \$11.70**





# ACCESSORIES & PARTS

M.P.N.	DESCRIPTION	MSRP
AC6072RS	5 × 6 Alumi-Coop Roost Kit	<b>101.30</b>
AC0610RS	6 × 10 Alumi-Coop Roost Kit	<b>168.80</b>
AC1012RS	10 × 12 Alumi-Coop Roost Kit	<b>267.30</b>
AC6072C	5 × 6 Cover / CNC-Cut Marine Vinyl	<b>442.80</b>
AC0610C	6 × 10 Cover / CNC-Cut Marine Vinyl	<b>683.10</b>
AC1012C	10 × 12 Cover / CNC-Cut Marine Vinyl	<b>823.50</b>
AC1212C	12 × 12 Cover / CNC-Cut Marine Vinyl	<b>683.10</b>
AC1224C	12 × 24 Cover / CNC-Cut Marine Vinyl	<b>1128.60</b>
AC56H	5 × 6 Replacement Handle	<b>60.80</b>
AC61012H	6 × 10 or 10 × 12 Replacement Handle	<b>75.90</b>
AC1224H	12 × 12 or 12 × 24 Replacement Handle	<b>118.10</b>
ACPULL	National Brand / Steel Pulley - Zinc	<b>11.70</b>
ACGL22	National Brand / Gate Latch - Zinc	<b>10.50</b>
ACH3	National Brand / 3" Hinge - Zinc	<b>7.30</b>
SPP25BB	9" Ball Bungee / Pack of 25	<b>30.40</b>
ACBB9	9" Bungee EPDM Rubber / USA Made	<b>3.70</b>
ACBB15	15" Bungee EPDM Rubber / USA Made	<b>5.60</b>
HNT	¼" Barbed Hose T	<b>2.50</b>
AC27GR	27 Gallon Aluminum Tank Kit	<b>575.70</b>





# RESOURCES

## ABOUT PASTURED POULTRY

Whether you buy an Alumi-Coop, make your own wooden coop, or buy another kit, here are a few things to consider.

- Greg Gunthorp (David's mentor) recommends comparing your price per square foot when considering what to buy. This is very helpful when comparing price to value!
- We agree with Joel Salatin – The single biggest problem in pastured poultry is that most coops are too heavy or too hard to move. So build them light or buy an Alumi-Coop!
- Always face your coop east. A chicken will naturally prefer moving east in the morning, towards the rising sun. The other reason is that the chickens are more protected from adverse weather (typically coming from the west).
- Do not try to turn the 12 × 12 or 12 × 24 coop around at the end of the field. Instead, swing the front of the coop over 45° (away from new row), then move the back of the coop over to the new row (about 12'), and swing the front 45° back into correct alignment.
- When harvesting broilers from a 12 × 12 or 12 × 24 coop, stack rows of chicken crates along the front and sides of the coop, then lift the front of the coop (with two people) and walking it off the birds. If you have questions about this process, give us a call.

Best wishes and good luck on all your pastured poultry ventures! If you have any questions, we'd be glad to help. Simply give us a call at 260-463-2919!

## AMERICAN PASTURED POULTRY PRODUCERS ASSOCIATION (APPPA)

The most common reason for raising pasture raised chicken, turkey, and eggs is to provide nutrient dense food and food freedom for your family in ways that can help to regenerate the land. A majority of the homesteaders never aspire to more than feeding their family and their land; however, many of today's largest APPPA producers started at a family scale of production that could sometimes be measured by dozens or maybe hundreds of birds a year, and they grew that production into a profitable farm business.

APPPA is not synonymous with "large scale" pastured poultry. We've been giving the pastured poultry community a space to share innovations, grow in knowledge, and succeed since 1997. The idea of what makes a pastured poultry flock large has changed dramatically since that time. Today's homesteader producing 300 meat chickens a year was a common scale for profit seeking farmers as little as 15 or 20 years ago.

Whether your goal is family or family and profit, the APPPA community has been at the forefront of what it means to raise birds on pasture.

To get started, visit [apppa.org](http://apppa.org) or call 888-662-7772.



**SCAN TO VISIT APPPA**





# PHOTO GALLERY





# PHOTO GALLERY







Rory Feek's 12 x 12



Modern Homesteading Conference,  
Coeur d'Alene, ID



Jackson Ridge  
Homesteading Expo,  
Nappanee, IN



Bud with Greg Gunthorp & Joel Salatin





# REFERENCE PHOTOS







12 x 12



12 x 24





# DEALER DIRECTORY

## ALABAMA

**Ace Southern Lumber**  
108 Co Rd 100  
Deatsville, AL 36022, USA  
334-991-5930

**Double R Farms**  
628 Carter Ave  
Bessemer, AL 35020, USA  
205-586-0169

## FLORIDA

**Superior Processing & Weighing**  
2130 Park 82 Dr  
Fort Myers, FL 33905, USA  
239-334-1717

## GEORGIA

**Day 41 Farm**  
282 Wilderness Camp Rd SE  
White, GA 30184, USA  
770-823-1955

## IDAHO

**Sheppard Family Farms**  
720 4th Street  
Kellogg, ID 83837, USA  
208-659-1977

## IOWA

**Yoder Equipment**  
19887 Jade Ave  
Bloomfield, IA 52537, USA  
641-664-2797

## INDIANA

**Backyard Creations**  
1220 350 E  
Rockville, IN 47872, USA  
765-569-2719

**Black Creek Farms**  
13032 Antwerp Rd  
Grabill, IN 46741, USA  
260-750-2781

**S-Curve Greenhouse**  
4312 W County Rd 450 S  
Versailles, IN 47042, USA  
812-689-6013

**Gurgling Brook Fencing**  
8114 S 300 E  
Geneva, IN 46740, USA  
419-605-1408

**J&M Poultry**  
14053 Fagan Rd  
Cambridge City, IN 47327, USA  
765-541-0715

**Michiana Farm Supply**  
105 E 200 N  
LaGrange, IN 46761, USA  
260-463-8113

**Midwest Farm & Pet**  
535 5B Rd  
Bremen, IN 46506, USA  
574-646-2509

**Millersburg Feeds**  
66094 IN-13  
Millersburg, IN 46543, USA  
574-642-9925

## KENTUCKY

**Cub Run Milling Co**  
11115 Cub Run Hwy  
Cub Run, KY 42729, USA  
270-524-4702

**Kentucky Organic Farm & Feed**  
4050 Guthrie Rd  
Guthrie, KY 42234, USA  
270-265-5004

**Stoltzfus Play Structures**  
2995 Millers Mill Rd  
Oak Grove, KY 42262, USA  
270-881-4207

## MICHIGAN

**MK Farm & Harness**  
4979 Ferris Ave  
Newaygo, MI 49337, USA  
231-928-6451

**Old Brick Farm**  
16477 Heim Rd  
Chelsea, MI 48118, USA  
734-260-1540

**Simon Brenneman**  
3313 Maple Ridge Rd  
Twining, MI 48766, USA  
989-873-6316

**Valley Backyards**  
5412 Norwegian Rd  
East Jordan, MI 49727, USA  
231-536-2693

## MISSOURI

**Windy Knoll Variety**  
29610 W 160th Ave  
Bethany, MO 64424, USA  
660-425-7795

**LNS Feeds**  
70999 Lehman Rd  
Fortuna, MO 65034, USA  
660-337-6205

**Trimline Barns**  
959 State Hwy 96  
La Russell, MO 64848, USA  
417-246-5666

## MISSISSIPPI

**Thick & Thin Lumber**  
Industrial Park Dr  
Clinton, MS 39056, USA  
601-351-9555

## NORTH CAROLINA

**Yoder's Farm & Garden**  
4100 NC-118  
Grifton, NC 28530, USA  
252-244-2992

## NEW YORK

**Featherbrook Farms**  
122 Snyder Rd  
Fort Plain, NY 13339, USA  
717-344-2284

**Warsaw North Country Ag**  
6195 State Route 20A  
Warsaw, NY 14569, USA  
717-552-7456

## OHIO

**Middlefield Tack & Farm Supply**  
15845 Georgia Rd  
Middlefield, OH 44062, USA  
440-632-0895

**Perimeter Solutions**  
5537 Co Rd 49  
Huntsville, OH 43324, USA  
937-464-2043

## PENNSYLVANIA

**Georgetown Sales**  
375 Old Dam Rd  
Christiana, PA 17509, USA  
610-593-5193

**Good's Feed Mill**  
949 Dry Tavern Rd  
East Earl, PA 17519, USA  
717-445-4356

**Hobby Ag**  
134 Short Lane  
Lykens, PA 17048, USA  
717-805-9815

**Home Place Market**  
329 Ferguson Rd  
Schellsburg, PA 15559, USA  
717-983-8450

**Mobile Chicken House**  
270 Commerce Dr  
New Holland, PA 17557, USA  
717-422-9062

**Stony Meadows**  
254 Bordner Rd  
Dornsife, PA 17823, USA  
717-844-4826





### **Sunny Ridge Markets**

994 Ridge Rd  
Shippensburg, PA 17257, USA  
**223-220-3019**

### **Trophy Sheds**

115 Groupe Rd  
Jersey Shore, PA 17740, USA  
**570-360-3889**

### **White Horse Machine**

122 White Horse Rd  
Gap, PA 17527, USA  
**717-768-8313**

## **TENNESSEE**

### **Cumberland Metal Buildings**

2920 Old Union Rd  
Sparta, TN 38583, USA  
**931-607-3539**

### **Outdoor Inc**

60 Wild Iris Lane  
Signal Mountain, TN 37377, USA  
**423-424-8768**

## **TEXAS**

### **Buzbee Feed & Seed**

1701 S Loop 340  
Waco, TX 76706, USA  
**254-757-1557**

### **Kingdom Oaks Farm & Ranch**

15957 Kingdom Oaks Ln  
Prairie View, TX 77484, USA  
**713-202-6624**

## **VIRGINIA**

### **Cumberland Discount**

25477 Wilderness Rd  
Jonesville, VA 24263, USA  
**276-265-0974**

### **Towns Edge Hardware**

18340 E James Anderson Hwy  
Dillwyn, VA 23936, USA  
**434-690-2258**

## **WASHINGTON**

### **Karen Olsen**

Port Orchard, WA, USA  
**360-731-3382**

### **Lake Joy Farmstead**

10528 344th Avenue NE  
Carnation, WA 98014, USA  
**425-324-6030**

## **WISCONSIN**

### **Calvin Schmucker**

741 Main St  
Dalton, WI 53926, USA  
**920-348-3196**

### **Wagler's Sales**

E20370 Dolotta Rd  
Augusta, WI 54722, USA  
**715-286-4210**

### **Big River Ridge Farm**

N5519 1090th St  
Prescott, WI 54021, USA  
**615-207-9512**

### **Wagler Farm Supply**

8224 County Rd K  
Arpin, WI 54410, USA  
**715-569-0188**

## **WEST VIRGINIA**

### **J&S Farm**

5315 Back Rd  
Beverly, WV 26253, USA  
**304-642-3486**

## **INTERNATIONAL**

### **CANADA**

#### **Coen Farm**

Box 165  
Ferintosh, AB T0B 1M0, Canada  
**780-781-5929**

#### **Elmer Albrecht**

453 North Line Avenue  
Kincardine, ON N2Z 2X4, Canada  
**519-395-4211**

#### **Ezra Kuepfer**

521144 Concession Rd 12  
Elmwood, ON N0G 1S0, Canada  
**519-363-0681**

#### **Glengowan Fencing**

4700 Line 14  
St. Marys, ON N4X 1C9, Canada  
**519-615-4629**

#### **Gateway Sales & Services**

52056 Glencolin Line  
Aylmer, ON N5H 2R3, Canada  
**800-705-4221**

#### **Good Nature Eco Farm**

135148 13th Line  
Thamesford, ON N0M 2M0, Canada  
**519-993-6606**

#### **Harvey Kuepfer**

2770 Chalmers Forrest Rd  
Millbank, ON N0K 1L0, Canada  
**519-595-7255**

#### **Stoll Metal Sales**

1993 Glenarm Rd  
Cameron, ON K0M 1G0, Canada  
**705-887-1750**

### **AUSTRALIA**

#### **Big Little Farm Co**

180 Ryans Rd  
Belgrave South, VIC 3160, Australia



## OUR MISSION:

Providing simple, effective and innovative poultry products to make your life easier while keeping your animals happy, healthy, and safe from predators!



**YOUR LOCAL DEALER:**