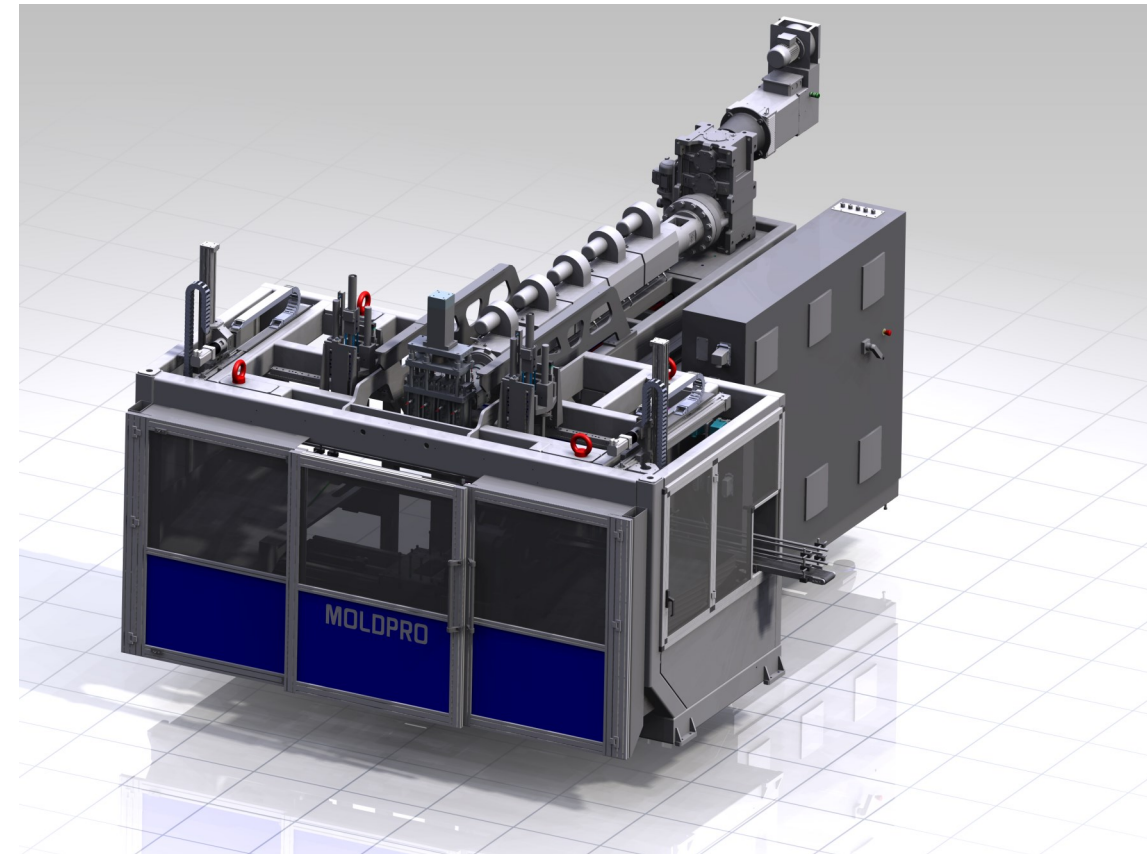


# Blow Molding Equipment

1-800-330-1338

[www.moldpro.com](http://www.moldpro.com)

**MOLDPRO**  
BLOW MOLDING SOLUTIONS

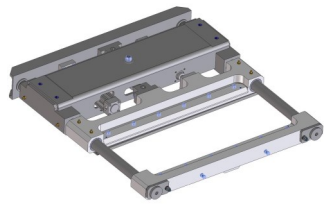


**Service and Equipment**

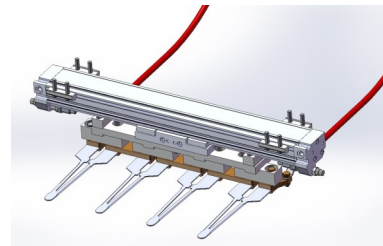
# Blow Molding Equipment

## Knives

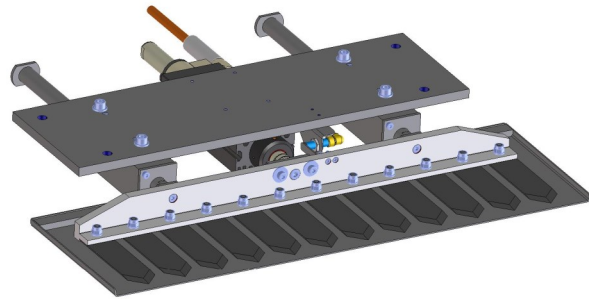
Welding Knife



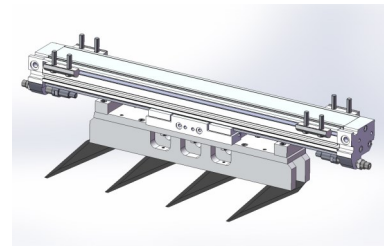
Hot Knife



Spear Knife



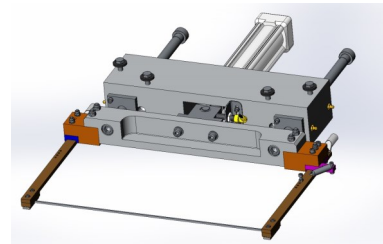
Swing Knife



Hot Knife With Parison Pinch



Hot Knife



**FESTO**

**Parker**

**SKF**

**LUK**

**INA**

**FAG**

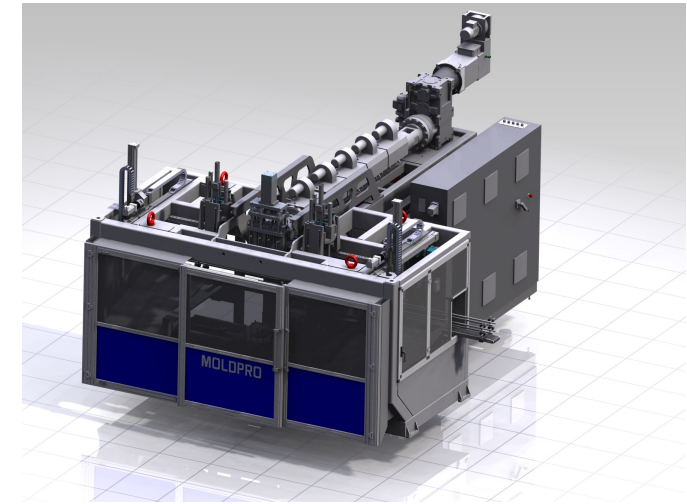
SCHAEFFLER GROUP

**MOLDPRO**  
BLOW MOLDING SOLUTIONS

4042 Mainway Dr. Burlington ON L7M 4B9  
1-800-330-1338 [www.moldpro.com](http://www.moldpro.com)



Blow Molding Machines

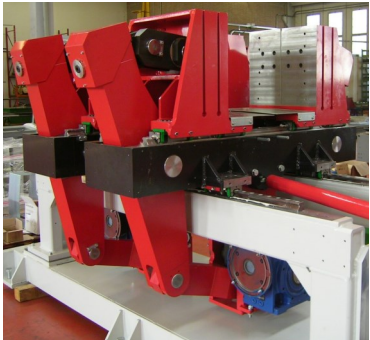


MT 500D

Stroke: 500 mm  
Clamping Force 120kN  
Screw Output PE: 160 kg/hr (80mm) 200 kg/hr (90mm)

MT 800D

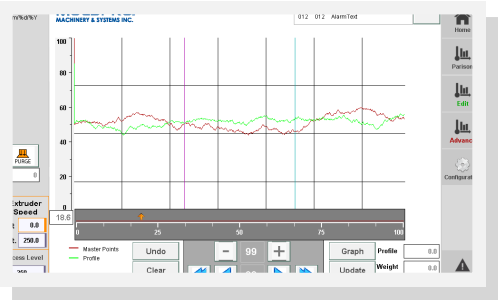
Stroke: 800 mm  
Clamping Force 300kN  
Screw Output PE: 260 kg/hr (100mm) 320 kg/hr (110mm)



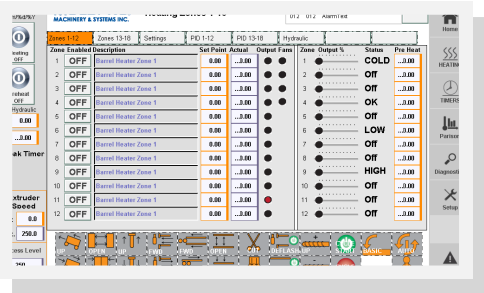
Control Upgrades



Parison Control



Heating Control



Features:

- Recipe
- Alarm Control
- Remote Access
- Proportional control for mould, transport and blow pin.
- XY Axis Takeout System



Blow Molding Machines

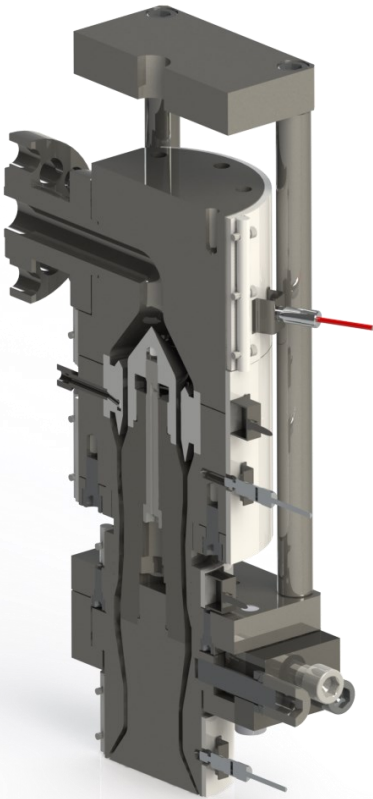
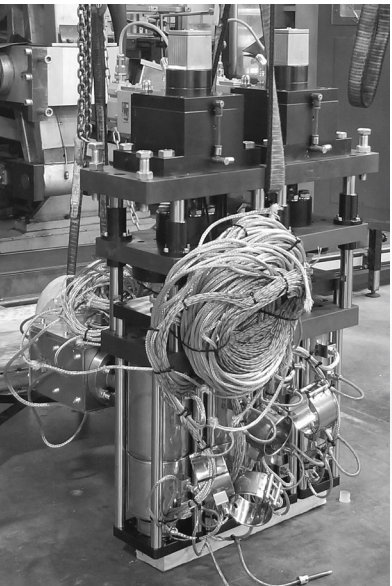
Extrusion Heads

Center flow design allows for good wall distribution and faster colour changes.

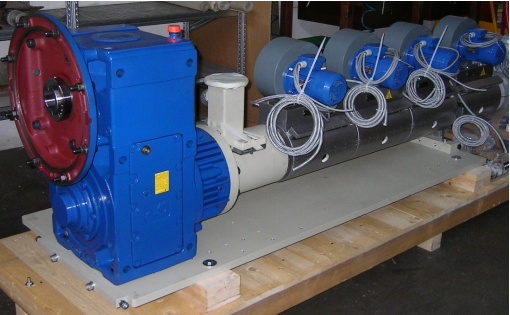
Capable of processing the following materials.

- HDPE
- LDPE
- PP
- PVC
- PET

Options:  
Multi Layer  
Visi-Stripe



Extruders

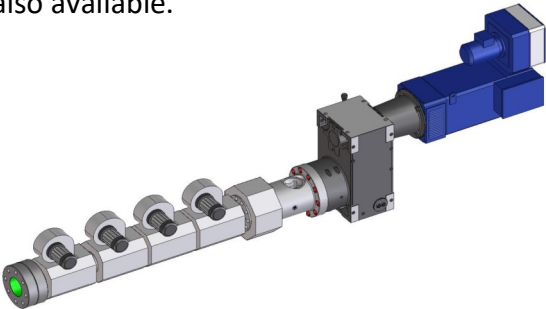


Extruders are capable of processing a variety of materials. Sizes available range from 60-120mm.

Satellite extruders for visi-stripe or multilayer heads are also available.



Drive Controls



Service

Servicing the following Equipment:

- Automa
- Battenfeld
- Bekum
- Kautex
- Uniloy

Replacing the following PLC's

- Barbra Coleman
- Siemens
- Moog



1-800-330-1338

www.moldpro.com

1-800-330-1338

www.moldpro.com