



American Overhead Door & Dock, Inc.  
*Headquarters*  
2081 Hartel St.  
Levittown, PA 19057

American Overhead Door & Dock, LVD  
*Lehigh Valley Division*  
6801 Tilghman St.  
Allentown, PA 18106

SALES | SERVICE | SOLUTIONS



**WWW.DOCKS-DOORS.COM**

Overhead Doors, Loading Dock Equipment, Dock Seals & Shelters, High Speed Doors, Service Contracts  
Specializing in Electrical Troubleshooting & Repairs, Turn-Key Installations, Loading Dock Design



# PEAK ELECTRIC

INDUSTRIAL & COMMERCIAL ELECTRICAL CONTRACTORS

# American Overhead Door & Dock

COMPLETE MECHANICAL & ELECTRICAL  
Turn-Key Installations, Repairs & Service



## Who Is Peak Electric, Inc. - American Overhead Door & Dock, Inc.?

We are Peak Electric, Inc / American Overhead Door & Dock, Inc. and we are comprised of two entities under one roof which allows our customers the assurance of knowing that with one phone call many of the everyday problems that occur with plant/warehouse equipment can be repaired. Whether it be a mechanical problem that may require fabricating and welding or an electrical control problem that would require expert trouble-shooting. We are the company to call. Our expert mechanics are proficient in the installation & repairs of such equipment as; dock levelers & restraints, rolling steel doors, dock doors, sectional doors, sliding freezer doors and high speed doors, warehouse modular offices & mezzanines, protective bollards & guard-rails...



## This..... Or This?



One phone call is all it takes. Whether its to have a piece of equipment installed, repaired or serviced. Let us take the worry away. How many times have you or someone that you know had to coordinate a repair or installation of a piece of equipment. Is it a mechanical problem? Is it an electrical control or power problem? Do I need to get an electrician to install the control wiring for the new automatic door or will the door installer get an electrician? and is the electrician licensed and qualified and insured!? STOP IT ALREADY! We are licensed, insured and qualified to take care of all of your equipment needs. Put us to the test; 75% of our customers are our customers because we could repair what other service companies could not.



## Time Is Money

"We stock parts". Can you think of three other words that can save you time and money other than, maybe, "we work free." Stocking parts for our customers equipment is a very important part of what we do right. A very important part of what an equipment service company does is, "keep the equipment operating." Equipment downtime costs money and eliminating equipment downtime is our specialty.

## CALL FOR RATE'S AND PRICING ON YOUR UP COMING PROJECTS

**Joseph T. Swope Jr.**  
President

Cell: 215-651-3666  
joeswope@docks-doors.com

**Joey Swope III**  
Vice President

Cell: 267-278-6331  
joey@docks-doors.com

**Devon Swope**  
Vice President

Cell: 267-278-5561  
devon@docks-doors.com

**VISIT US ON THE WEBSITE**  
**www.docks-doors.com**

PO BOX 942, LANGHORNE, PA 19046 / SHIPPING - 2081 HARTEL ST LEVITTOWN, PA 19057  
TOLL FREE: 800-946-3639 FAX: 215-943-5202 EMAIL: SERVICE@DOCKS-DOORS.COM

# INSTALLER QUALIFICATION DATA

## American Overhead Door & Dock is Owned by Mechanics

Joe Swope Jr: Licensed Master Electrician  
Joey Swope III: Certified Electrician  
Devon Swope: Union Millwright & Carpenter

## Field Service Technicians

Over 25 factory trained technicians and installers covering NJ, NY, PA, DE, MD and VA. In house we offer certified welders, masons, racking specialist and union employees. Our employees are OSHA certified, fork truck & scissor lift certified and attend weekly safety meetings.

## Door Experience

Over 25 Years of experience in the insrtallation and service of all major brands and models of rolling steel doors, fire rated rolling doors, sectional doors, rolling grilles, high speed fabric doors including but not limited to the following manufacturers: Albany/Assa Abloy, Ryttec Doors, Cornell, Wayne - Dalton, Overhead Door Corporation, Clopay, TKO, Haas .....

## Dock Leveler Experience

Over 25 Years of experience in the mechanical and electrical installation and service of all major brands and models of dock equipment for commercial and industrial applications including but not limited to the following manufacturers: McGuire, Pentalift, Kelley/Serco, Rite Hite, Blue Giant, Pioneer, Power-Amp/DLM.....

## Factory Authorized Sales & Service

Factory authorized sales and service for the following manufacturers: Albany/Assa Abloy, Wayne - Dalton Doors, Alpine Rolling Steel Doors, Liftmaster Motor Operators, Pentalift Dock Equipment, Haas Doors, McGuire Dock Levelers, Berner and Powered Aire Curtains

## Philadelphia Electrical Contractors License #28641 Member

International Door Association, Electrical Contractors Assoc of Philadelphia.

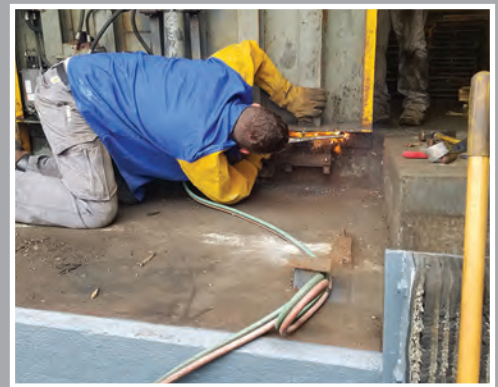
## List of Recent Jobs Pending & Completed

Refer to American Overhead Door & Dock, Inc. Website [www.docks-doors.com](http://www.docks-doors.com)

## Key Personnel

- ♦ President - Joseph T Swope Jr.
- ♦ VP of Sales - Joey Swope III
- ♦ VP of Operations - Devon Swope
- ♦ VP of Finance - Michael Lane
- ♦ Chief Estimator - Mark Lambdin
- ♦ Service Management & Tech Support - Herb Ramb, Ryan Quinn
- ♦ Regional Managers- Paul Bruce, Joe Faust, JR Hartenstein
- ♦ Accounting: Denise Rushwick, Judy Kolaris, Jenn Chambers





## SERVICES

- › 24/7 Emergency Service
- › Electrical Troubleshooting
- › Hydraulic Trouble Shooting
- › Overhead Door Repairs
- › Broken Springs
- › Broken Cables
- › Dock Levelers Repairs
- › Welding and Metal Fabrication







Protect Your Investment

# PLANNED MAINTENANCE PROGRAM

The most cost-effective way to avoid downtime and to maintain safety is with American Overhead Door and Dock

We offer affordable service contracts for all loading dock systems, high speed overhead doors, rapid roll doors and automatic gate systems.

## Maximizing Your Investment

With over 25 years of experience as a Mid Atlantic area Overhead Door and Loading Dock Dealer, American Overhead Door and Dock, Your Overhead Door Company would like to introduce a Planned Maintenance Program so beneficial and cost effective that it will increase your workers' productivity and safety along with extending the life span of your equipment.

## Increases Productivity While Decreasing Downtime

A Planned Maintenance Program ensures proper equipment operation and avoids costly breakdowns. That means employees spend more time being productive on-the-job rather than waiting for time-consuming, unplanned and costly repairs. Our factory trained personnel service your equipment with authorized parts so it adheres to the manufacturers' specifications and does not jeopardize your warranty.

## Creates a Safe Environment

When you regulate your equipment, you achieve the safety standard required for quality operation and reducing any factor of unpredictability makes your work environment safer! The overall result helps prevent OSHA citations and may reduce worker's compensation claims by identifying any possible equipment hazards.

## Protects Your Investment

The Planned Maintenance Program contract assures your initial equipment investment does not rapidly diminish with the normal wear and tear of typical operations. Not only does the Planned Maintenance Program safeguard your investment; it also extends the life span and effectiveness of it! Through monitoring your equipment, minor repairs and adjustments executed on a frequent basis will minimize and help prevent costly major overhauls or premature replacement.



## COMMERCIAL-INDUSTRIAL

- Insulated Sectional Doors
- Uninsulated Sectional Doors
- Aluminum Sectional Doors
- High Speed Doors
- Cooler Doors
- Freezer Doors

## ROLLING STEEL DOORS

- Service Doors
- Sliding Grilles
- Insulated Doors
- Counter Fire Doors
- Fire Doors
- Roll Down Store Front
- Grilles
- Mini Warehouse Doors

## ELECTRIC OPERATORS

- Reversing Edges
- Radio Controls
- Photo Cells
- Push Button Controls
- Key Switches

## LOADING DOCK EQUIPMENT

- Mechanical Levelers
- Dock Seals
- Hydraulic Levelers
- Dock Bumpers
- Edge of Docks
- Strip Doors
- Dock Restraints
- Traffic Doors
- Dock Shelters
- Air Bag Levelers
- Vertical Storing

EASTERN/CENTRAL PA | NEW JERSEY | DELAWARE | MARYLAND

TOLL FREE 800-946-3639 SERVICE@DOCKS-DOORS.COM WWW.DOCKS-DOORS.COM



**PROTECT YOUR INVESTMENT!**  
**CALL AMERICAN OVERHEAD DOOR AND DOCK**  
**YOUR OVERHEAD DOOR COMPANY TODAY.**

## FEATURES & SERVICES



With the Planned Maintenance Program, you receive a full range of service treatments by trained experts, which means trouble-free operation.

### INSPECTION

All parts, fasteners, welds, and overall operation of equipment are carefully inspected and evaluated.

### CLEANING

A thorough cleaning of all moving parts to remove debris build-up as a result of normal operations is performed on the equipment. In addition, this procedure also includes a cleaning of the surrounding area to promote safety and to remove any outside interference.

### ADJUSTMENT

Over time, parts become disengaged and misaligned. Therefore, adjustments are needed on a periodic basis. Our service professionals regularly adjust equipment as stated in the manufacturers' manuals to maintain proper working condition and validate the warranty.

### LUBRICATION

All moving parts and assemblies receive applications of necessary lubricants according to the manufacturers' requirements.

### FINAL INSPECTION

After a final inspection of the entire operation of equipment, American Overhead Door and Dock- Your Overhead Door Company service representative makes recommendations and notes required parts.

### PARTS/EXTRA WORK

While a Planned Maintenance Program may extend the quality and duration of your equipment, it cannot guarantee unending life to any product. Eventually parts reach the end of their functional life and require replacement. Upon the customer's authorization, the necessary parts will be replaced. Parts and labor will be billed additionally.

### IMMEDIATE RESPONSE

In an emergency situation, the Planned Maintenance Program prioritizes immediate action to the customer and expedites the return of productivity to both equipment and employees.

### COST AND EFFICIENCY

In order to assure a cost effective visit, we will pre-schedule the visit with your contact person. Prior to the service call, your assistance in preparing easy access to the equipment will help keep repair costs down and allow the visit to be totally dedicated to inspecting and repairing the equipment.

### ACCOUNTABILITY

One of the Planned Maintenance Program objectives is to meet your company's insurance requirements as it pertains to subcontractors working on-site. Whenever our trained service personnel work on your equipment, the result is a detailed service record for your files.

**EASTERN/CENTRAL PA | NEW JERSEY | DELAWARE | MARYLAND**

**TOLL FREE 800-946-3639 SERVICE@DOCKS-DOORS.COM WWW.DOCKS-DOORS.COM**





## SPECIALTY SERVICES

- Dock Pit Demolition and Construction
- Concrete Wall Sawing
- Floor Sawing and Trenching
- Block Wall Repair
- Create Door Openings
- Concrete and Freezer Floor Repairs
- Rack Installation
- Rack Relocation
- Rack Repair

Our expert staff and factory trained technicians have the capability to tackle much more than your average door company. With over 25 technicians boasting a wide mechanical background, we are able to offer complete turn-key solutions to the industry. Our technicians skill sets range from Masons, Electricians, Millwrights, Carpenters and Certified Welders, we even have the capability of bringing in architects and engineers to make sure that your project is properly designed and permitted if applicable. The next time you have an out of the box project that you think you are going to get stuck running and managing multiple trades, pick up the phone and call your new overhead door company American Overhead Door and Dock/Peak Electric Inc and let us show you what turn-key is all about.



EASTERN/CENTRAL PA | NEW JERSEY | DELAWARE | MARYLAND

TOLL FREE 800-946-3639 SERVICE@DOCKS-DOORS.COM WWW.DOCKS-DOORS.COM





## COMMERCIAL DOORS

- ▶ Insulated Sectional
- ▶ Full View Glass Sectional
- ▶ Rolling Steel
- ▶ Fire Doors
- ▶ Security Gates
- ▶ Grilles

**Wayne Dalton**  
GARAGE DOORS  
*Over 60 Years of Innovation*

**Haas Door**  
A Netziper Company

CHAMBERLAIN  
**LiftMaster**  
PROFESSIONAL

**Manaras**

**ZAP**  
A TUCKER AUTO MATION HOLDINGS COMPANY



EASTERN/CENTRAL PA | NEW JERSEY | DELAWARE | MARYLAND

TOLL FREE 800-946-3639 SERVICE@DOCKS-DOORS.COM WWW.DOCKS-DOORS.COM





## SPECIALTY DOORS

- › High Speed Fabric
- › High Speed Security
- › Rubber Doors
- › Cold Storage Sliding and Swinging

- › Impact Doors
- › FRP Doors
- › Bug Doors

**ASSA ABLOY**  
**HÖRMANN**  
High Performance Doors

**JAMISON**

**TNR DOORS**



EASTERN/CENTRAL PA | NEW JERSEY | DELAWARE | MARYLAND

TOLL FREE 800-946-3639 SERVICE@DOCKS-DOORS.COM WWW.DOCKS-DOORS.COM



## LOADING DOCK EQUIPMENT

- › Vertical Storing Docks
- › Hydraulic Docks
- › Air Powered Docks
- › Mechanical Docks
- › Vehicle Restraints
- › Dock Seals
- › Dock Shelters
- › Elevating Dock Lifts
- › Bumpers

American Overhead Door and Dock represents two major lines of loading dock equipment, Pentalift and McGuire. Many of our competitors are locked into using only one manufacturer which means only one option for the project at hand... With the ability to pull equipment from two sources we can guarantee you are getting the correct piece of equipment with the best warranty for your custom application.



EASTERN/CENTRAL PA | NEW JERSEY | DELAWARE | MARYLAND

TOLL FREE 800-946-3639 SERVICE@DOCKS-DOORS.COM WWW.DOCKS-DOORS.COM





## ACCESSORIES/SAFETY

HVLS Industrial Fans, Dock Lights, Dock Fans, Red/Green Light Communication, Wheel Chocks





SALES | SERVICE | SOLUTIONS



American Overhead Door & Dock, Inc.  
2081 Hartel St.  
Levittown, PA. 19057  
☎ 1-800-946-3639  
✉ [service@docks-doors.com](mailto:service@docks-doors.com)  
✉ [estimating@docks-doors.com](mailto:estimating@docks-doors.com)  
[www.docks-doors.com](http://www.docks-doors.com)

American Overhead Door and Dock LVD  
Lehigh Valley Division  
6801 W. Tilghman St. Suite 117 Allentown, PA 18106  
☎ 1-800-946-3639  
✉ [service@docks-doors.com](mailto:service@docks-doors.com)  
✉ [estimating@docks-doors.com](mailto:estimating@docks-doors.com)  
[www.docks-doors.com](http://www.docks-doors.com)