

BREAKFAST

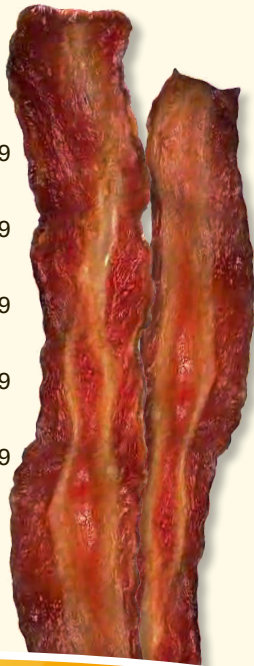


Served until
10:30

SANDWICHES

BACON, EGG, & CHEESE	\$3.29
SAUSAGE, EGG, & CHEESE	\$3.29
HAM, EGG, & CHEESE	\$3.99
STEAK, EGG, & CHEESE	\$5.99
CHICKEN, EGG, & CHEESE	\$5.99

Extra meat \$0.99



Specials

TUESDAY

LARGE 1-TOPPING
PIZZA

\$8.99

PLACE YOUR ORDER ONLINE:

WWW.CARTERSVILLESTORE.COM

COUNTRY CORNER *Deli*
(804)375-3749

COUNTRY CORNER
Deli



We feed you like family
(804)375-3749

Mon.-Sat. 6am-9pm
Sun. 8am-9pm

SANDWICHES

PULLED PORK BBQ	\$4.29
FISH FILET	\$4.29
CLASSIC BLT	\$3.99
STEAK & CHEESE	\$5.99
CHICKEN BREAST FILLET	\$4.29
SPICY CHICKEN FILLET	\$4.29



BURGERS

1/3 LB ANGUS CHEESEBURGER	\$4.29
2/3 LB DOUBLE ANGUS CHEESEBURGER	\$6.99
BOLOGNA BURGER	\$4.29
BACON CHEESEBURGER	\$5.99
DOUBLE BACON CHEESEBURGER	\$7.99

SEAFOOD

SHRIMP & FRIES	\$8.99
FISH & CHIPS	\$7.99

FRIED CHICKEN

Handbreaded Jumbo Chicken Tenders

3 PIECES	\$5.49
5 PIECES	\$8.99
7 PIECES	\$11.99
10 PIECES	\$15.99



CHICKEN BY THE PIECE ALL DAY



WINGS BONE-IN & BONELESS AVAILABLE

6 PIECES	\$6.49
9 PIECES	\$9.99
12 PIECES	\$12.49
24 PIECES	\$24.99

FAMILY MEALS

10 PC TENDERS, LARGE MACARONI, LARGE POTATO WEDGES	\$24.99
---	---------

.....DAILY SPECIALS.....

8 PIECE CHICKEN	\$12.99
16 PIECE CHICKEN	\$24.99

SIDES

	SML	LRG
FRENCH FRIES	\$2.99	\$5.99
ONION RINGS	\$2.99	\$5.99
POTATO WEDGES	\$2.99	\$5.99
MACARONI & CHEESE	\$2.99	\$5.99

ANY TOPPING

PIZZA
\$11.99

EXTRA CHEESE \$1.50

