



RISE DESIGN

WASDI Sarl is a Luxembourg based Space-Startup that works in the field of Earth Observation. WASDI is a platform able to extract value-added information from satellite data and is specialized in mapping Natural Disaster (floods, fires etc).

We are now developing a new vertical tool, called **RISE**, dedicated to the monitoring of natural hazards in Humanitarian Camps around the world.

The goal of **RISE** is to hide to the users' all the complexity of the Satellite Image processing and just provide them the results.

Users will register their organization in RISE and will be able to define one or more Area of Operations.

RISE will automatically process the full satellite archive to analyse the past events and then will continue to acquire and process Satellite Images every day, in near Real Time to produce updated maps.

The main flow of the User is:

1. The user reaches the public home page of RISE and make the login
2. RISE shows a Dashboard where there is a map showing the different Area of Operations of the User, and some widgets giving quick/critical information. With Widget here we mean a small component that highlight some specific information like for example People Affected, Events On going etc.
3. The user clicks on an Area of Interest on the map

RISE shows the Monitoring Section: this is a web-gis where the user can add to the map the different available layers (flooded area maps, buildings maps, impacts maps, drought map, weather stations...)

In this challenge we are searching for a modern and appealing design for the RISE Web Application.

We request the design of 4 pages:

- *Public Home Page (Code - V01)*
- *Dashboard (private Home Page) (Code - V03)*
- *Monitor (web GIS) (Code - V14)*
- *Registration Page (Code - V04)*

NOTE 1:

We already have a RISE Branding Manual that must be the starting point of the design. (RISE Brand.zip)



We are sorry but the Manual is in Italian, but we are confident that the elements are clearly understandable by anyone. If you need support, please send us a message.

NOTE 2:

The Monitor View (V14) is the most important for us.

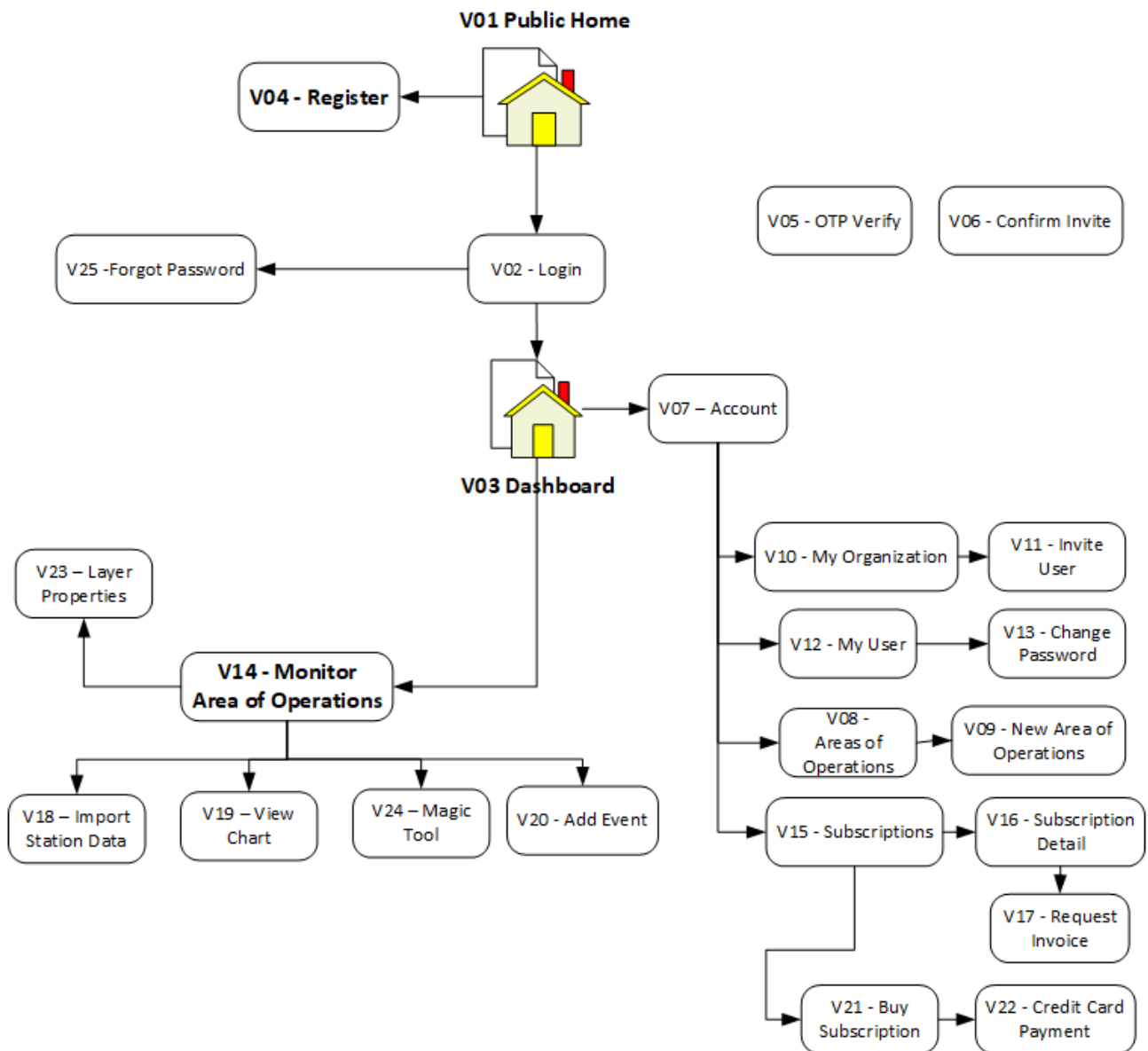
NOTE 3:

We provide also the wireframe mock-up of the 4 pages. **These Mock-up are intended only to show the different components that must be present in the page.** The layout of the Mock-ups is not meant to be mandatory. **Indeed, the value added we are searching from the Designer, is exactly how to show and dispone these components.**

For example, in the Monitor View (see later for the description) the time bar and the layer bar can be horizontal, or vertical, immediately visible or expandible with over or with a click... these are just examples to say that you are free to Design the page as you wish. We just require that all the component listed in the specification below are present.

Site Map

The full site map is the following:



Only the pages in bold are requested in this project (V01, V04, V03, V14)

Detailed Specifications

V01 - PUBLIC HOME PAGE

The public home page must contain:

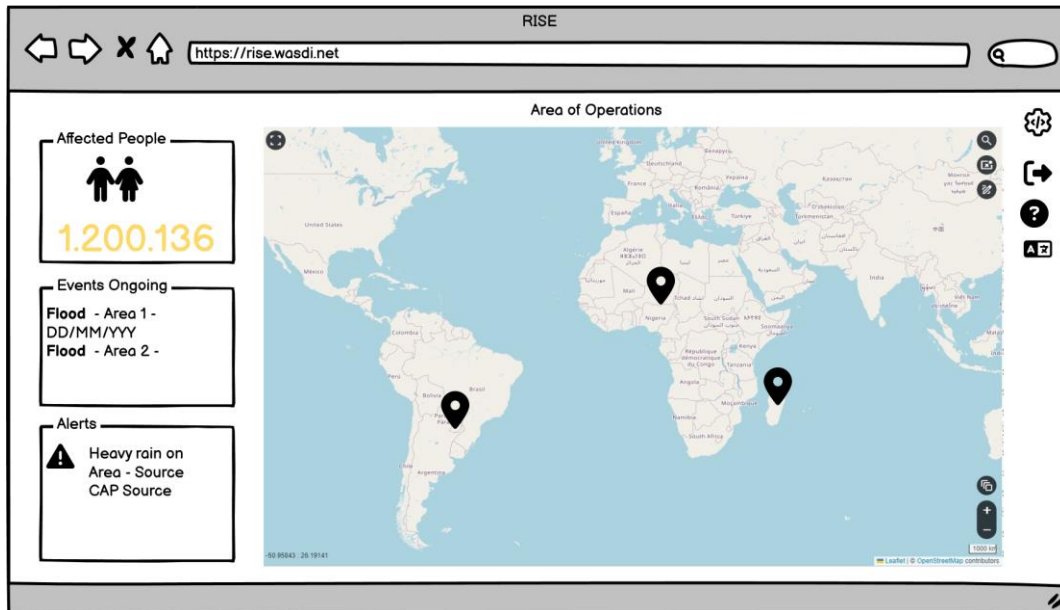
- Link to log-in in the system
- Link to register to the system
- Section with the description of the tool
- Section with the pricing policy
- Section with the partners/success stories



V03 - DASHBOARD

The dashboard is the page shown to the user once logged.

- Must have a map where all the area of operations of the user are marked (assume 3 or 4 areas for example)
- Must have a Widget with the number of people affected
- Must have a Widget with the list of automatically detected on-going events (ie "Flood in Area 1", "Drought in Area 4")
- Must have a Widget with a list of news
- Button/Link to the "Settings" (or Account) section
- Button/Link to logout (can be also in a generic header or footer)
- Button/Link to quickly change language
- Button/Link to the help section



Settings Button
to access the
Account View (V07)
Logout
Change Language
Link the the online help

V04 - MONITOR

As stated before, this is the most important view. In general, is a typical Web-GIS.

We are searching for an innovative and charming design.

The Monitor shall have:

- Map: the map must be as big as possible because is where the user really works. Note, the user will be able to switch between 2D map (default) and 3D Globe.

The map must support these tools:

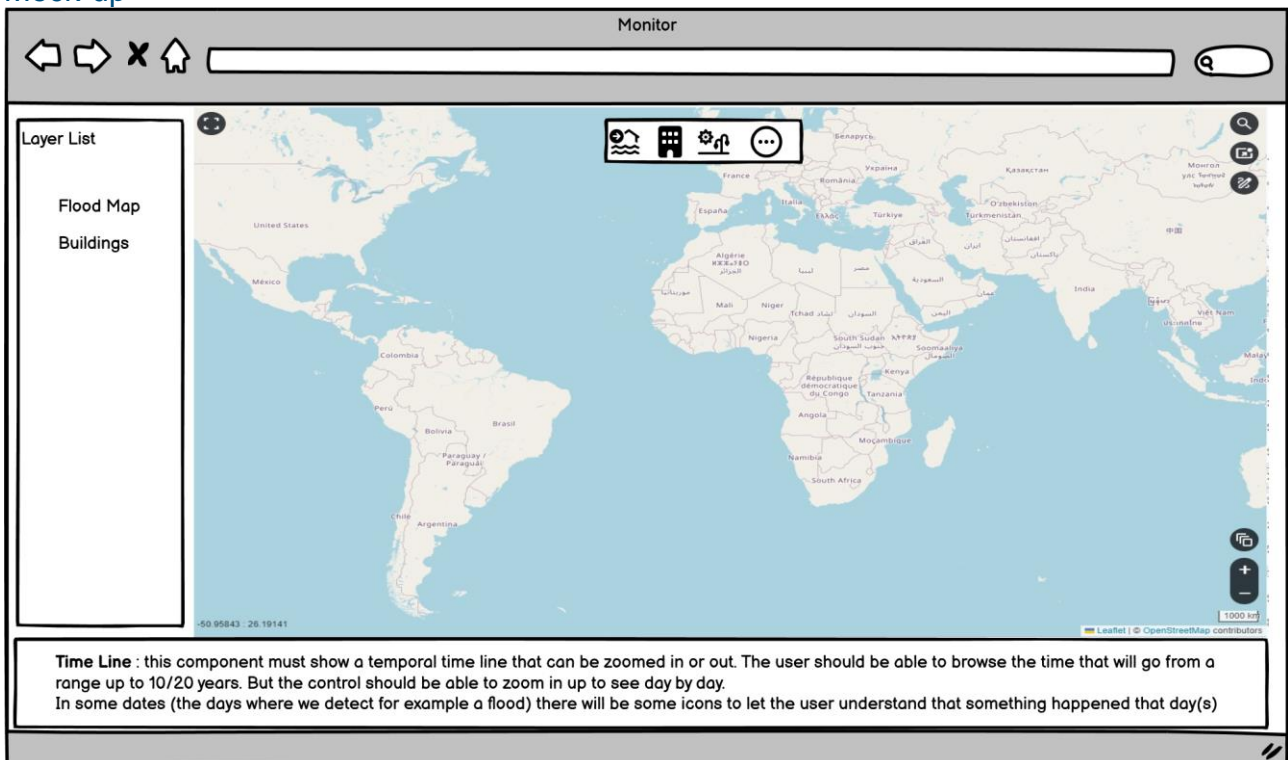
- Geo Search (input the name of a place, get the related places and can click on one to zoom there)
- A ruler that shows the actual dimension (the small scale)
- Pixel Info tool: when this tool is activated, if the user clicks on a layer on the map, the system shows the value of the clicked pixel.
- Buttons to zoom in and out
- Command to change the base layer
- Measure tool: the user must be able to draw a line or an area and the system will give estimation of lenght or area
- Draw Tool: the user must be able to draw a rectangle or polygon on the map

- Layer Bar: the user will be able to add layers to the map. This bar is where the user can find the layers to add to the map. The number of possible layers can growth in time. But there are some layers that we would like to be quickly and easily accessible: flooded areas, buildings, impacts, drought index, stations. This can be a toolbar, a menu or whatever other solution. We are oriented to have a fixed number of layers "immediately" available and then a button to "search more" that will open an overlay dialog where the user can search all the layers, but we are open to whatever other solution proposed



- **Layer List:** once a layer is added to the map, the layer is added also to the layer list. So, this is a list of the layers visible in the map. For each layer the user must be able to:
 - Delete the layer from the layer list
 - Change the transparency of the layer
 - Access the properties of the layer (that will probably be shown in a dialog)
 - View the legend of the layer (legend, or style)
 - Change the order of layers on the map (z-index)
- **Time Bar:** in RISE will be possible to see maps in near real time, but also to navigate back in time. The time bar is a component that should allow the user to go back in time. The user must be able to zoom in and out the time bar: for example, the time bar can show an interval of the last ten years 2014-2024, with a tick every year. Then the user can zoom to one year level and see one tick per month. Then zoom at week or directly day level.
In the time bar, we must be able to add some markers. We will use it to show past events to the user, so, for example, we may have a marker in 4/6/2022 because on that date we detected a flood.
- There must be a way for the user to come back to the Dashboard

Mock-up



REGISTRATION

We ask the design also of this page, mainly to give a sample of "form style" page. RISE will have other similar pages. This is typical form where the user can input/edit different data.

For this specific page the fields are:







RISE

- Name and Surname
- UserId of at least 8 characters
- Password of at least 8 characters that mix at least one char, one number and one special symbol.
- confirms the inserted password
- valid email
- confirms the inserted email
- Mobile Number
- Organization Business Name
- type of Organization between:
 - Humanitarian NGO
 - Research
 - Commercial
 - Educational
 - Government
 - Individual
- address of the Organization including:
 - Country (of registration of the Organization)
 - City
 - Street
 - Number
 - Postal Code
 - Telephone Number (optional)
- confirm Terms And Conditions of RISE
- confirm Privacy Policy of RISE

Mock-up

RISE



https://rise.wasdi.net

Register in RISE

User Id	<input type="text"/>	E-Mail	<input type="text"/>
Password	<input type="text"/>	Confirm E-Mail	<input type="text"/>
Confirm Password	<input type="text"/>	Organization Name	<input type="text"/>
Name	<input type="text"/>	Organization Type	<input type="text" value="Select..."/>
Surname	<input type="text"/>	<div>Organization Address</div> <div>Street <input type="text"/> N. <input type="text"/></div> <div>Postal Code <input type="text"/> City <input type="text"/></div> <div>Phone <input type="text"/> Country <input type="text" value="Select..."/></div>	
Mobile Number	<input type="text"/>		

☐ I have read and Accept the RISE Terms and Conditions

☐ I have read and Accept the RISE Privacy Policy

Register