



Lancaster Log Cabins



Real Log Park Model Cabins

Real, Rustic Log Cabins on Wheels!

717-445-5522

www.LancasterLogCabins.com



Why Lancaster Log Cabins?

Lancaster Log Cabins has been in the log cabin industry since 1990! We pride ourselves in providing quality park model cabins at a fair price with great service. We are a family business with Amish background that believes in working hard and doing the right thing 100% of the time. We strive to make long lasting relationships with our customers and provide a product that is guaranteed to please.

What is a Park Model Cabin?

A Park Model Cabin is a finished cabin on a trailer frame. Turn-Key! It's basically like a glorified mobile home. Everything is done for you from the plumbing to the furniture. It is truly a complete package.

Benefits of a Lancaster Log Park Model Cabin

- We use all real logs! No log siding
- Turn-Key! Ready to live in or rent out the next day
- More rustic and appealing than other park model cabins
- More durable and longer lasting (They'll last a lifetime)
- Less maintenance
- Practical designs
- Easier to finance
- No permits or added property taxes***(Few exceptions. Please check your local municipality regulations.)*
- Best of all, they're more affordable than other park model cabins

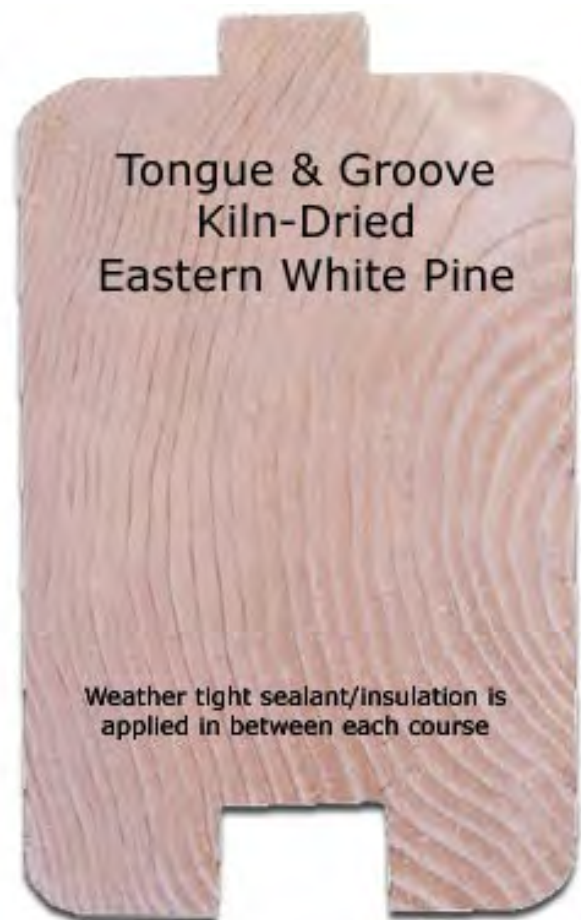
Lancaster Log Cabins Interlocking Log System



Our interlocking design increases the overall strength and durability of our log cabins. It also provides a weathertight seal. No leakage! Every log is kiln-dried and treated with stain on the outside and polyurethane on the inside. We also put insulation strips on every course to provide a weathertight seal.

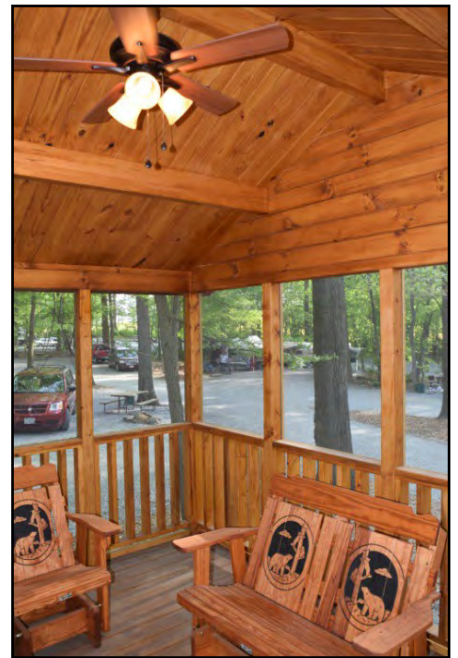
Benefits of Lancaster Log Cabins Real Logs

- Durable
- Last a lifetime
- Kiln-Dried (very little shrinkage)
- Stays weathertight
- Appealing
- Rustic feel
- Little maintenance





Exterior Pictures





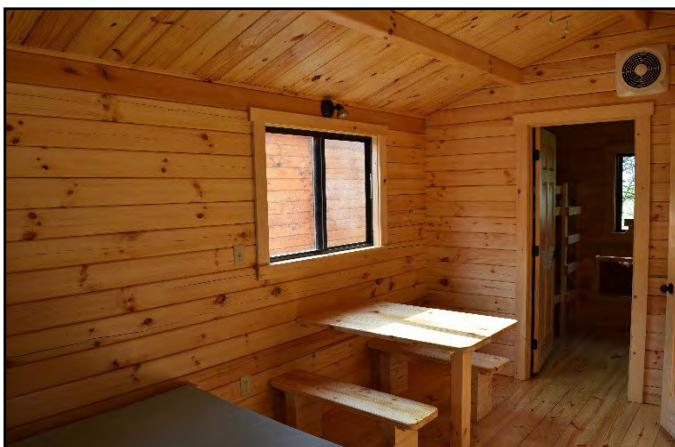
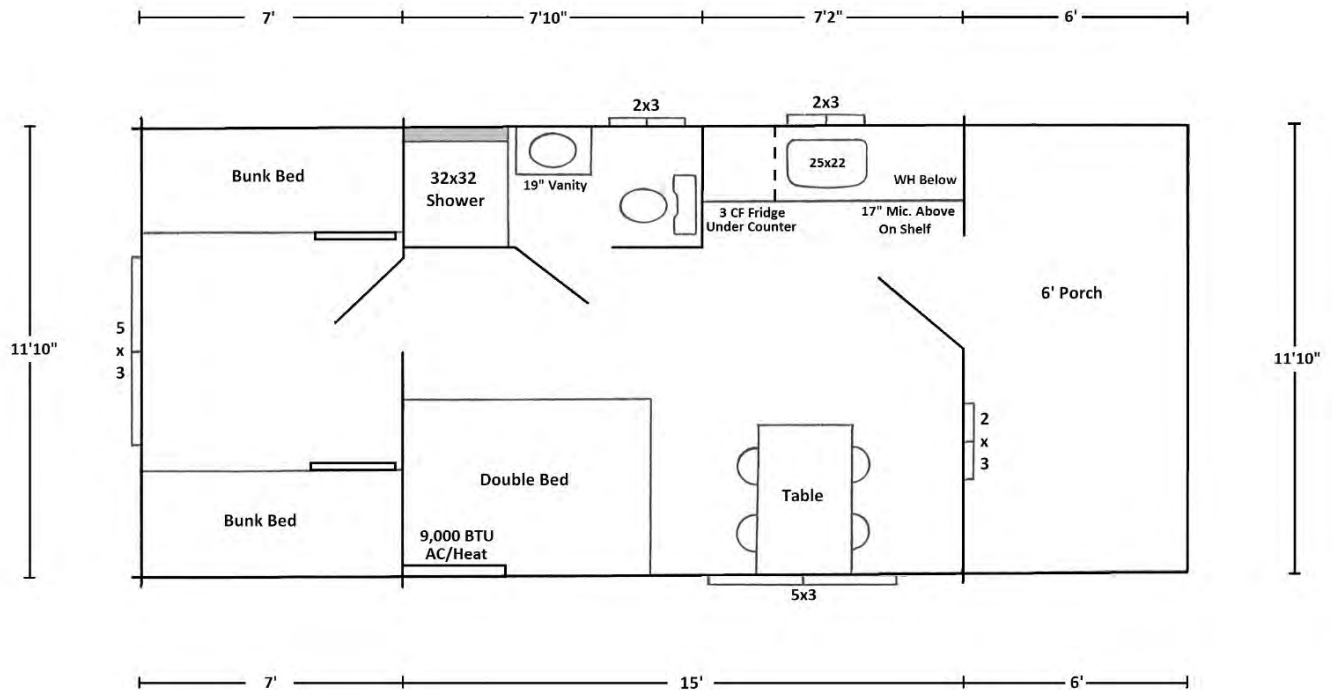
Interior Pictures



Shenandoah Log Cabin

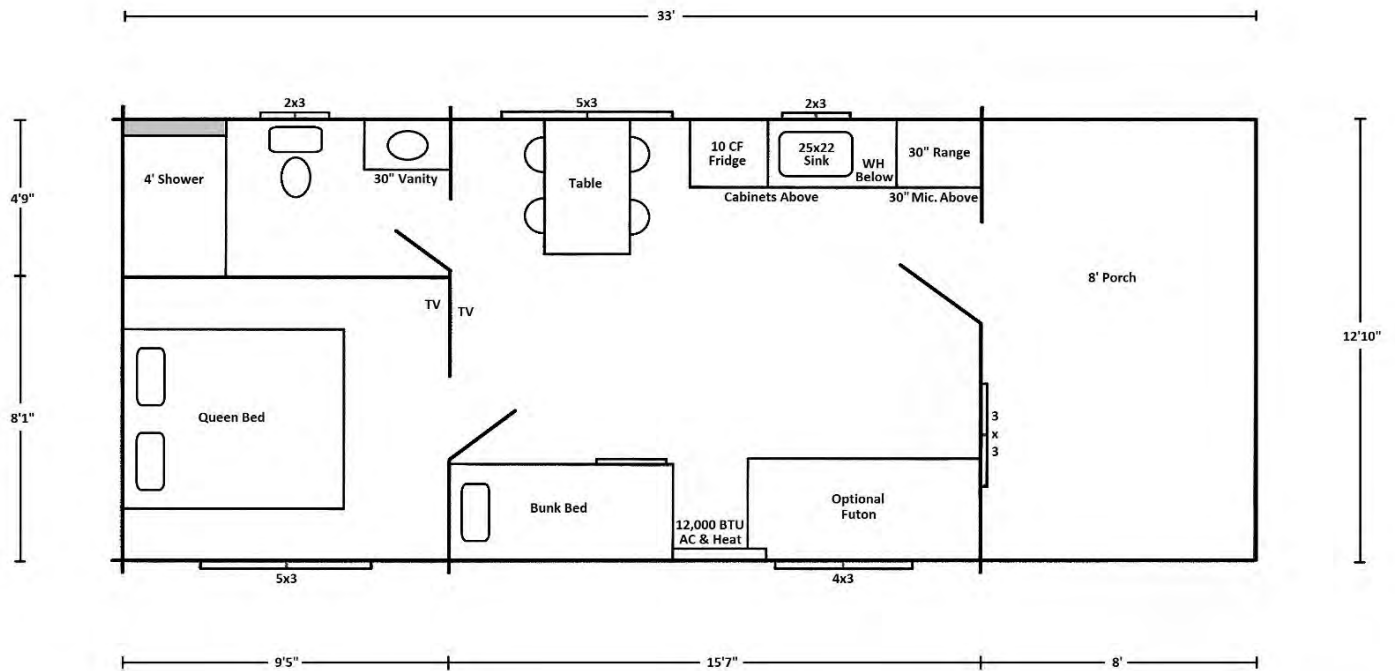
12x22 Cabin with 6' Porch (264 SF)

Sleeps 6, Smaller Bath, Basic Kitchenette, Dining Area, Private Bunkroom



Ozark Log Cabin

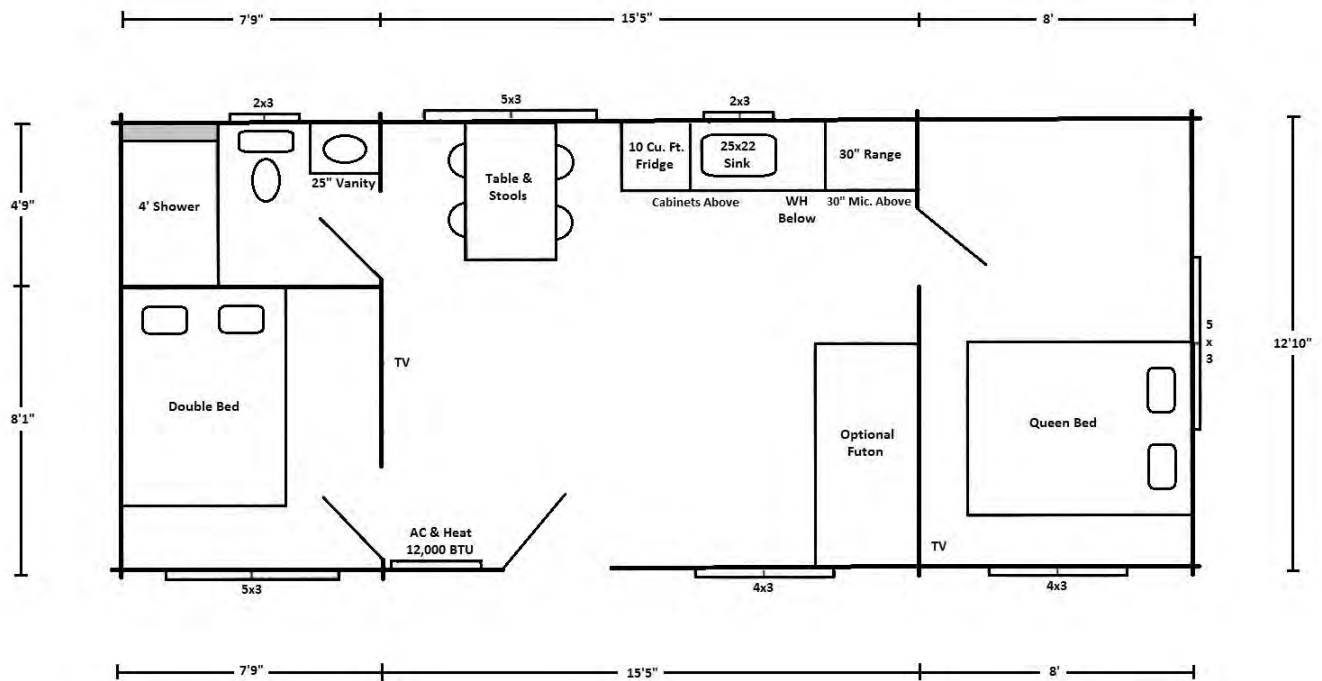
13x25 Cabin with 8' Porch (325 SF)
Sleeps 6, Full Bath, Full Kitchen, Dining Area, Private Bedroom



Rancher Log Cabin

13x31 Cabin (400 SF)

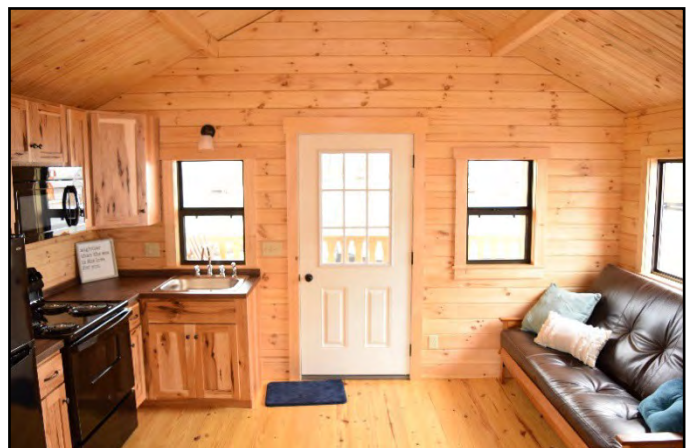
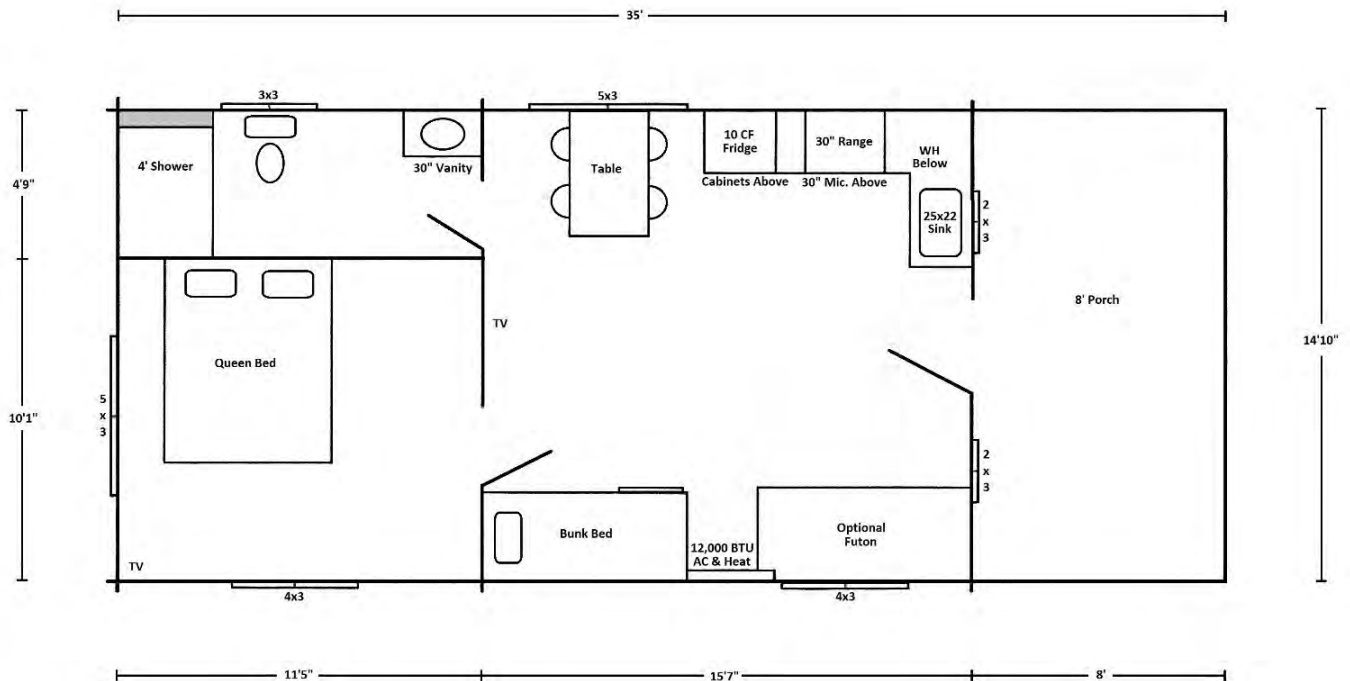
Sleeps 6, Full Bath, Full Kitchen, Dining Area, 2-Private Bedrooms



Adirondack Log Cabin

15x27 Cabin with 8' Porch (400 SF)

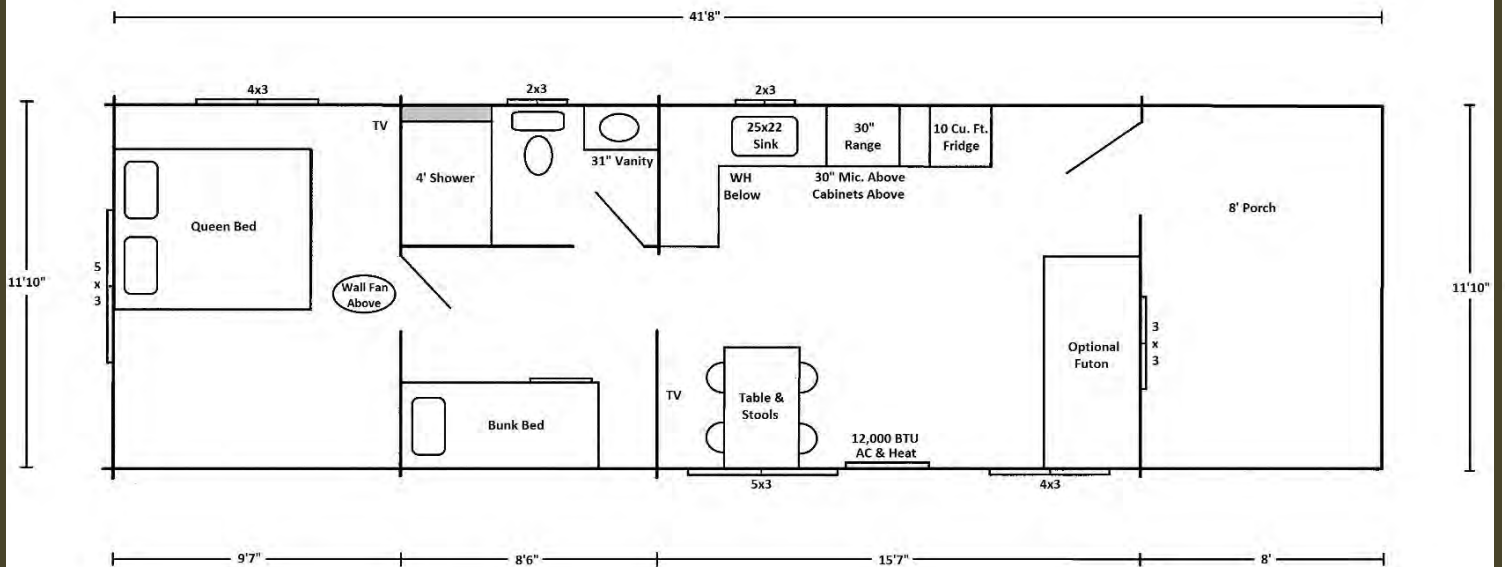
Sleeps 6, Full Bath, Full Kitchen, Dining Area, Private Bedroom



Lakeview Log Cabin

12x34 Cabin with 8' Porch (400 SF)

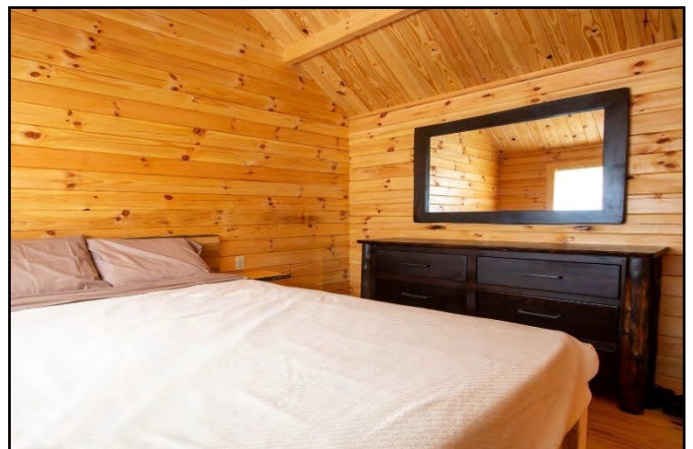
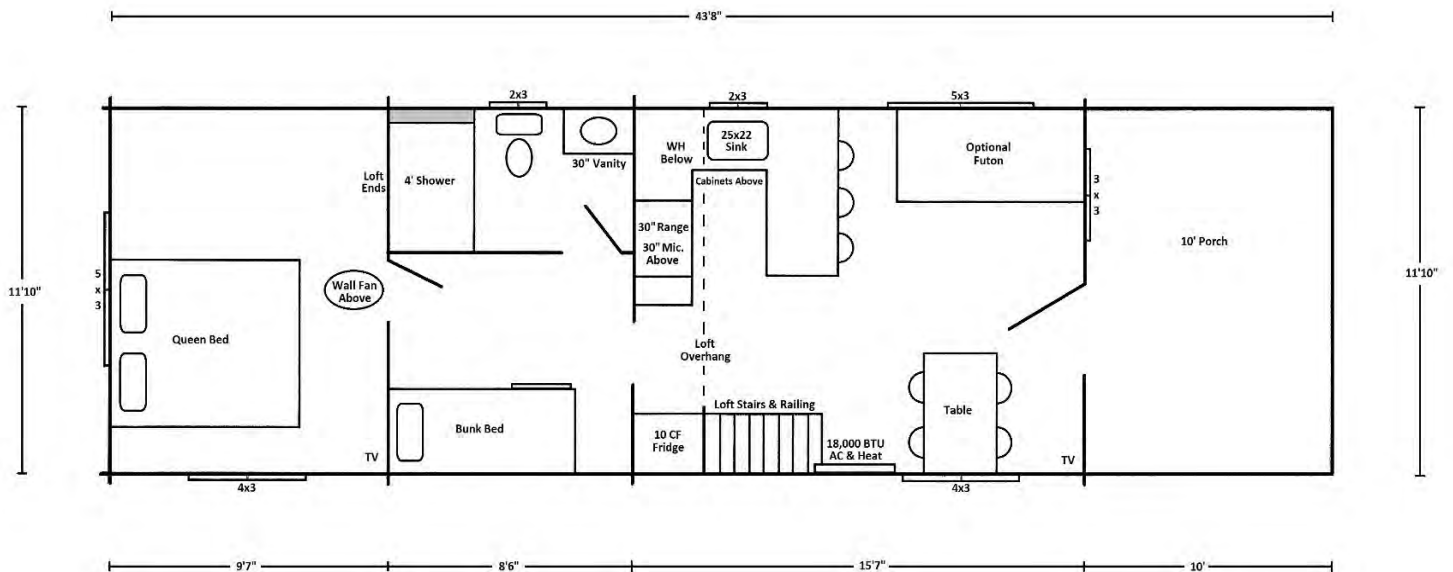
Sleeps 6, Full Bath, Full Kitchen, Dining Area, Private Master Bedroom, Semi-Private Bunkroom



Sierra Log Cabin

12x34 Cabin with Loft & 10' Porch (400 SF)

Sleeps 10, Loft, Full Bath, Full Kitchen, Dining Area, Private Master Bedroom, Semi-Private Bunkroom



Lancaster Log Cabins

Real Log Park Model Cabins

Included Sheet

Exterior Features:

- RVIA Seal & VIN Number (Meets ANSI A119.5 Code for Recreational Park Trailers)
- Heavy Duty Trailer Frame with 10" I-Beams & Outriggers
- Solid 4x6 Kiln-Dried Eastern White Pine Logs with Insulation Strips on Every Course
- Stained Exterior Logs
- 28 Gauge Forest Green 40-Year Metal Roof (Color is Optional)
- Insulated Roof and Floor (Styrofoam Blueboard Insulation)
- Insulated, Double Pane Aluminum Windows (Bronze, Horizontal Sliding)
- 9-Lite Fiberglass Entrance Door with Screen Door
- Porch Light and GFI Outside
- 6', 8', or 10' Porch with Railing
- 5/12 Roof Pitch (Steeper for Lofts)
- 50 Amp or 100 Amp Exterior Electric Panel Box on Back Right Corner (Must Be Hardwired)
- Water Connection Under Shower (Pex Pipe with Garden Hose Hook-Up)
- Sewer Connection Under Shower (1-Main Drain, 3" PVC Pipe)

Interior Features:

- Solid 4x6 Kiln-Dried Eastern White Pine Interior Logs
- 2x6 Tongue & Groove Southern Yellow Pine Roof and Floor Boards
- Cathedral Ceiling with Log Beams Showing
- Six Panel Solid Pine Interior Doors with Hinges and Door Knobs
- All Light Fixtures, Ceiling Fans, Outlets and Switches Included (Entire Electrical Package)
- 2 Coats of High-Grade Polyurethane on Walls, Ceiling and Floor
- AC & Heat Wall Mount Ductless Mini Split with 9,000 BTU, 12,000 BTU or 18,000 BTU AC & Heat
- Cable Jack & Outlet Up Higher for TV (TV Not Included)
- All Beds & Mattresses Except Futons (Futons are Optional)
- Table or Breakfast Bar with Bar Stools

Kitchen & Bath Features:

- Rustic Hickory Cabinets, Countertop & Backsplash
- 25x22 Kitchen Sink with Gooseneck Faucet
- 10 Cu. Ft. Fridge in Most Models
- 30" Electric Range/Oven in Most Models (Option for LP)
- 30" Over-The-Range Microwave in Most Models
- 20 Gallon Electric Water Heater (Option for LP On Demand)
- Toilet
- 4' Shower in Most Models
- 25" or 31" Vanity & Faucet in Most Models
- Medicine Cabinet
- Bathroom Exhaust Fan in Larger Models (Ozark & Above)
- All Plumbing Included (Pex Pipe for Water Lines & PVC Pipe for Sewer Lines)

Note: Freight and set-up not included in prices (customer must do all site work, hook-ups, blocking, leveling, skirting, porch steps)

Lancaster Log Cabins

Real Log Park Model Cabins

Price Sheet

We Offer Special Pricing for Campgrounds & Multiple Unit Discounts Depending on the Quantity Ordered

Shenandoah Log Cabin 12x22 Cabin with 6' Porch (264 SF) **\$39,900 - \$44,900**

Sleeps 6, Full Bath, Basic Kitchen, Dining Area, Private Bunkroom

Ozark Log Cabin 13x25 Cabin with 8' Porch (325 SF) **\$44,900 - \$49,900**

Sleeps 6, Full Bath, Full Kitchen, Dining Area, Private Bedroom

Rancher Log Cabin 13x31 Cabin (400 SF) **\$49,900 - \$54,900**

Sleeps 6, Full Bath, Full Kitchen, Dining Area, 2-Private Bedrooms

Adirondack Log Cabin 15x27 Cabin with 8' Porch (400 SF) **\$50,900 - \$55,900**

Sleeps 6, Full Bath, Full Kitchen, Dining Area, Private Bedroom

Lakeview Log Cabin 12x34 Cabin with 8' Porch (400 SF) **\$52,900 - \$57,900**

Sleeps 6, Full Bath, Full Kitchen, Dining Area, Private Bedroom, Semi-Private Bunkroom

Sierra Log Cabin 12x34 Cabin with Loft & 10' Porch (400 SF) **\$60,900 - \$65,900**

Sleeps 10, Loft, Full Bath, Full Kitchen, Dining Area, Private Bedroom, Semi-Private Bunkroom

Options & Accessories:

Loft, LP On-Demand Water Heater, LP Stove, Roof Color, Screened-In Porch, Delete Beds or Table Night Stand Shelves or Bunk Shelves, Washer/Dryer Hook-Ups, Steeper Roof, Futon, Armoire, Dresser, Wall Fan, Longer Overhangs, Vinyl Mattress Cover for Queen/Double, Larger Porch, Bunk-Over, Winter Package (Water Lines Inside, Upgraded AC/Heat)

Please visit us anytime! We have multiple show cabins that are open to view. Our hours are Monday-Friday from 7-5 and Saturdays by appointment

Lancaster Log Cabins, 1005 Brackbill Road, Gap, PA 17527

Call or Email for Multiple Unit Discount Pricing

717-445-5522

Sales@LancasterLogCabins.com

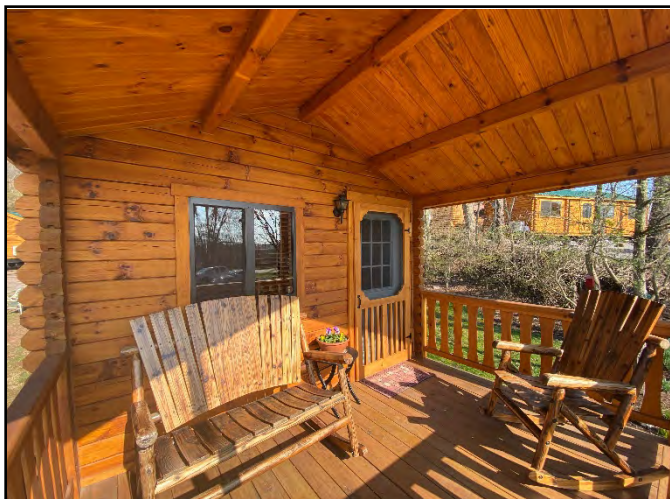


Interior Pictures





Exterior Pictures





"Quality Log Cabins with Great Service at a Fair Price"

**Lancaster Log Cabins
1005 Brackbill Road
Gap, PA 17527**