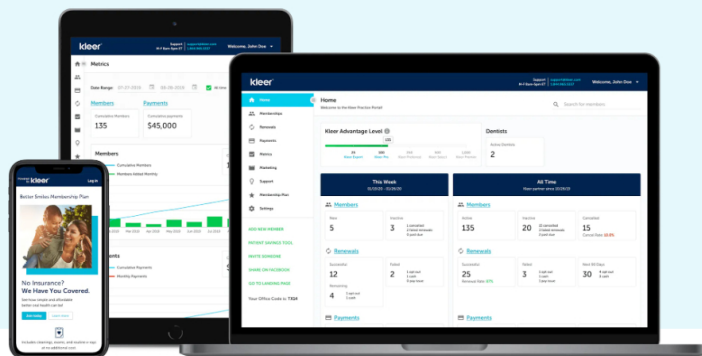


The **Most Powerful** and **Trusted** Dental Membership Platform

Kleer's advanced, cloud-based platform includes everything you need to design, implement, automate, and grow a successful dental membership plan. The platform is trusted by thousands of solo, group, and DSO dental practices across the US.

Hear what our customers have to say!



The Kleer platform is **intuitive, automated,**
and **comprehensive.**

The Kleer platform includes comprehensive features that make it easy to properly design and price your in-house dental membership plan, automate administration, market to patients, and track results.

Kleer Practice Enrollment

The Kleer Platform includes a step-by-step enrollment process for designing and pricing a custom membership plan that gets results for your practice.

Getting your practice started with Kleer is simple

The Kleer Practice Portal enables you to easily customize multiple care plans designed and priced based on your patient demographics, treatment protocols and practice goals. With a expertly designed and priced plan, you can expect phenomenal results—the average Kleer practice will double uninsured patient revenue!

Build and customize your care plans

The Kleer Success Team will use Kleer SmartDesign™ to customize your plan and align it with your treatment philosophy, patient demographics and membership plan goals. Kleer SmartDesign™ is a proven method for creating a successful membership plan that's based on the Kleer Success Team's learnings working with thousands of dental practices.

Create your own fee schedule and pricing

We'll assist you in analyzing your fee schedule, which will be used as the basis for your membership plan pricing. We will apply our proprietary Kleer SmartPricing™ formula to help you determine subscription pricing for each of your care plans that perfectly balances patient and practice value. You can then opt to provide a

common discount across all procedure codes or implement unique discounts by procedure category.

Select additional options

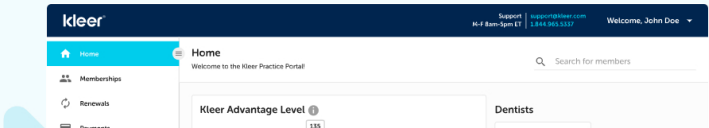
You can further customize your dental membership plan by selecting from additional options including monthly payment plan, family discounts and adding specialists.

The Kleer Practice Portal

The Kleer Practice Portal makes it very easy to track, manage, and grow your membership plan.

Managing your membership plan is so easy

Easily invite, enroll and manage patients within the user-friendly Kleer Practice Portal. The portal makes it simple to track membership plan performance, manage and edit care plans, track and manage renewals, and tap into resources and tools to grow your membership.



Track members, revenue and payments

It's simple to track members, purchases, renewals and payments at any time. You can also stay up to date on member sign ups, deposits to your bank account, member payment issues, and renewals by opting into Kleer automated notifications.

Invite and enroll patients

Quickly and easily invite patients to join your membership plan via email and easily enroll patients from your front desk right from the Kleer Practice Portal.

Easily manage and edit patient accounts

As you know, patients change their mind a lot. After purchasing your plan, they may want to change the credit or debit card they have on file. Or, you might want to upgrade or downgrade their care plan based on a change in their oral health status. Klear makes these changes very easy to handle. In working with thousands of dental practices, we have encountered almost every patient scenario that exists and have built features that make it very easy to address them.

Make changes to your membership plan at any time with Klear Version Control

Most dental practices make changes to their membership plan within 12 months of launch. Klear Version Control makes it very easy to make changes at any time. Klear Version Control ensures that patients that already purchased your membership plan will stay with that plan until their renewal date. While patients purchasing your plan for the first time will sign up for the new plan.

Get paid fast with secure, electronic payment processing

When you join Klear, we create a unique and secure merchant bank account for your practice. When a patient joins your plan, their payments are directly deposited into your merchant account and then transferred to your practice bank account.

Automate the renewal process so you can focus on patient care

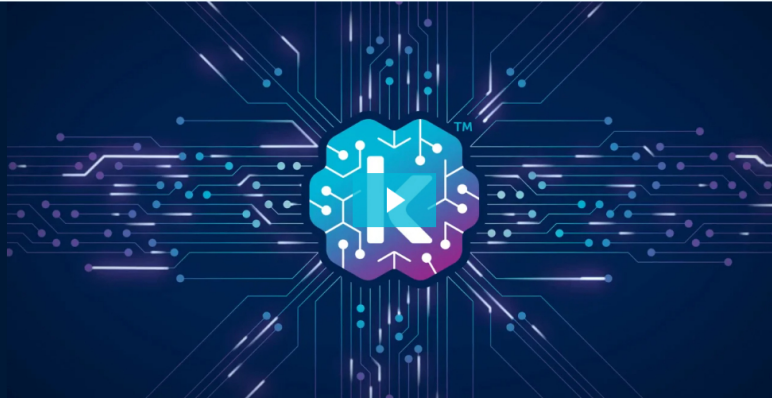
Focus on patient care rather than tedious, time consuming tasks like calling patients and entering payment information. Klear automatically manages the renewal process, sending notifications to patients, processing payments, sending receipts, and notifying your team and your patients of any issues that arise.

Grow your membership with Klear marketing tools

Promote your membership plan using free marketing tools customized for your practice, including a custom patient landing page for your website, patient brochures for your office, social media tools for your Facebook page, Google Ad templates, direct mail templates and seasonal campaigns.

Promote membership savings with the Klee Patient Savings Tool

The Klee Patient Savings Tool conveniently enables your practice to show patients the cost of treatment with and without your membership plan. Patients can easily review the savings they will receive by purchasing your membership plan. It's a great tool for getting patients to accept a comprehensive treatment plan.



Klee Intelligence™

Automate, measure, and grow your membership plan with Klee's proprietary PMS integration solution.



KI Automation

Eliminate the time-consuming tasks of managing a membership plan so your team can focus on patient care.



KI Performance

Track the impact Klee is having on patient behavior and practice performance.



KI Growth

Effortlessly grow membership with automated marketing campaigns to patients who are a good fit for your membership plan.



KI Optimization

Measure and optimize the performance of your PPOs.

[Learn more about Klee Intelligence](#)

Provide a great patient experience and decrease administrative work with patient self-service tools.

Klee's solution is designed to be self-service for patients, making for an excellent user experience while lowering administration for your team. Klee is simple, online and intuitive.

Easy Patient Enrollment

Patients can enroll into your plan from any device using a QR code on the patient brochure, an email link, an embedded link on your website, or by entering your dentist code on Klee's website. Sign-up is quick and simple, taking just a few minutes. And, best of all, benefits start immediately!

Patient Portal

The Klee Patient Portal is accessible from any device and enables members to easily review plan benefits, print a membership card, manage payments, add family members and invite friends to join your membership plan.

[Learn more about the patient experience](#)



We pride ourselves as innovators, and **we continuously release product enhancements to improve your experience** with the Klear platform.

Klear's platform offers a simple, modern **user experience**.

Klear's dental membership plan platform is simple, intuitive and user-friendly.

[I'm ready to get started](#)

About Us

[About Klear](#)
[Our Story](#)
[Klear Leadership](#)
[Klear Promise](#)
[Careers](#)

Solutions

[Klear Platform](#)
[Klear Platform Tiers](#)
[Klear Consumer Care](#)
[Klear Employee Care](#)
[Klear Intelligence](#)
[Klear Advantage](#)
[Klear Growth Services](#)
[Klear Comparison](#)
[Dental Membership Plans](#)

Who We Help

[Dentists](#)
[Office Managers](#)
[DSOs and Groups](#)
[Partners](#)
[Patients](#)
[Employers](#)
[Employees](#)
[Customer Success Stories](#)

Resources

[Klear Knect](#)
[Blog](#)
[News & Media](#)
[Case Studies](#)
[Ebooks](#)
[Contact Us](#)

klear®



Get started today for free

Join thousands of dental practices using Klear's platform to offer simple, affordable and personalized care directly to patients.

[Request my demo](#)



[Legal Documents](#) [Privacy Policy](#) [Terms of Use](#) [Accessibility Statement](#) [Disclosure Statement](#)

[Sitemap](#) | © 2024 Klear

[Support](#)